



Dealer Principal	General Manager	Sales Manager	Service Manager	Parts Manager	Marketing	Finance
Date: September 7, 2022		Source:			Replaces: n/a	
Bulletin #: A 09 2022 01		Name:			Supersedes: n/a	
		Title:			Group: n/a	
		Phone #:				
		Email:				

## Aftersales Bulletin

### 00 51 49 05 00 – Service Action Comfort Entry Access Reactivation, Check and Rework

**PERFORM THE PROCEDURE OUTLINED IN THIS SERVICE INFORMATION ON ALL AFFECTED VEHICLES THE NEXT TIME THEY ARE IN THE SHOP FOR MAINTENANCE OR REPAIRS AND PRIOR TO RETAIL DELIVERY.**

#### Affected Vehicles

This Service Action affects Rolls-Royce Phantom (RR11/12), Ghost (RR21/22) and Cullinan (RR31) models produced from January 28<sup>th</sup>, 2022, to April 12, 2022, which are fitted with Comfort Entry Access feature (option code 322).

All vehicles added to this technical campaign have been identified as already having the Comfort Entry Access System deactivated, by disconnecting the door handle signal wiring at the Body Domain Controller (BDC). This may have been done by the production plant or via the previous Delivery Stop (STOP023864) or Technical Campaign (00 51 44 05 00).

#### Situation

Rolls-Royce Motor Cars NA is releasing this bulletin to provide information regarding the reactivation/repair for the Comfort Entry Access system. Repair kits have been created and are now available allowing for the reconnection and repairing of the Comfort Entry Access system.

#### Information

A technical campaign has been launched to ensure that all affected vehicles have the Comfort Entry Access system deactivated until the solution can be implemented. Dealer personnel should use Integrated Service Processes Application (ISPA), S-Gate “Campaigns for Vehicle” to check whether a vehicle requires this technical campaign or via Aftersales Information Research (AIR). Please see bulletin “A10 2016 Recall / Technical Campaign Check” for details.

Published date September 7, 2022

### Correction

1. Reconnect door handle signal wires at BDC
2. Check all 4 door handle inserts and if required, install replacement as outlined in the procedure below.

### Procedure

**Note:** Please review the complete instruction before you start the work.  
This repair consists of two procedures which are listed below.

- Door Handle signal wiring reconnection at the BDC
- Checking door handle inserts and if required, replace

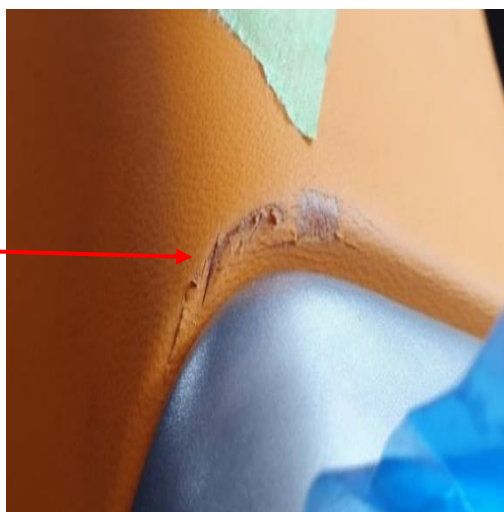
### Door Handle Signal Wiring Reconnection

The Comfort Access Entry door handles must be re-activated by reconnecting the door handle signal wires at the BDC on RR11/12/21/22/31 models.

1. Access the Body Domain Controller by removing the front right A-pillar side panel, please refer to REP: 51 43 075 Remove and install side trim panel, footwell, on A-pillar right.

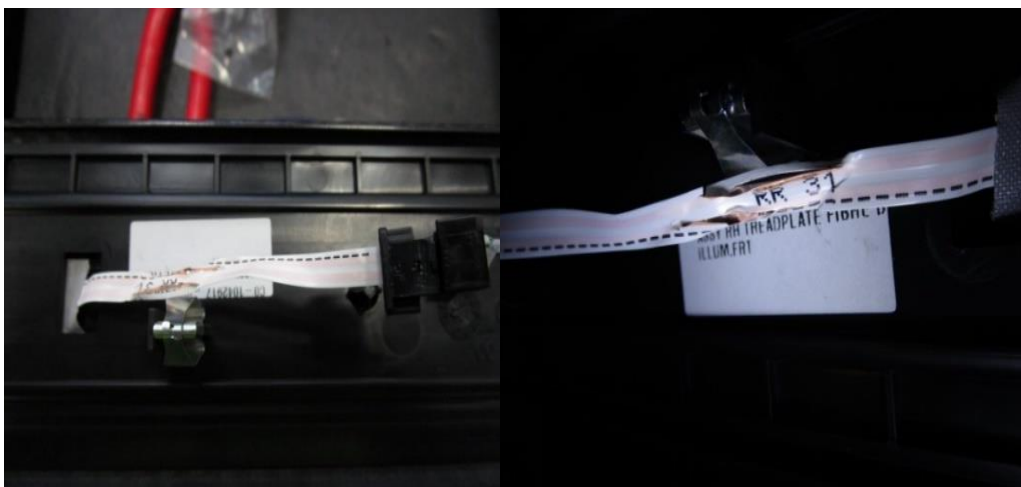


**Risk of damage!** Protect surfaces and be extra careful when working with high-quality interior materials.

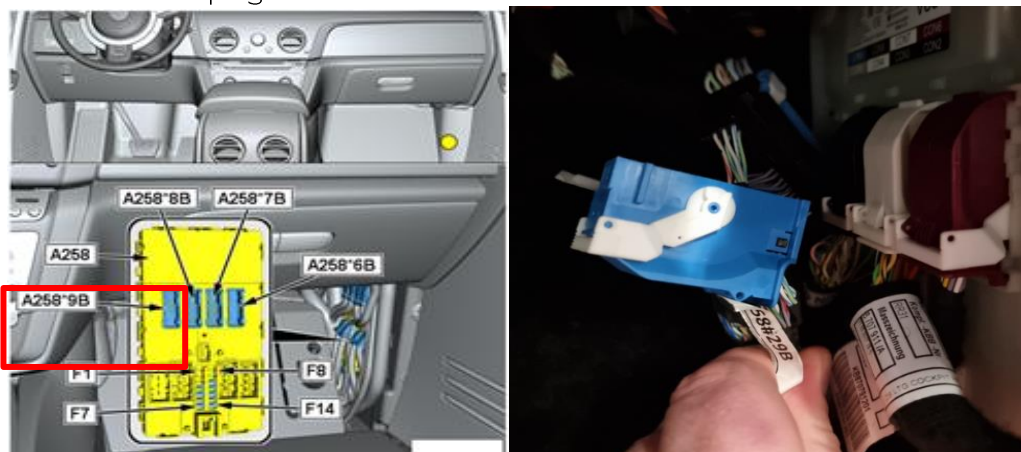


**Risk of damage!** Be extra careful when fitting Illuminated Treadplates to ensure that the wire/ribbon does not become damaged.

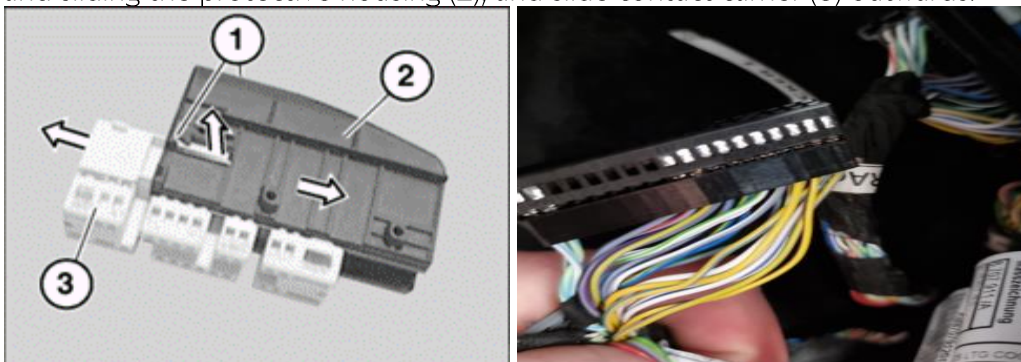
Published date September 7, 2022



2. Disconnect the plug connector A258\*9B from the BDC control unit.

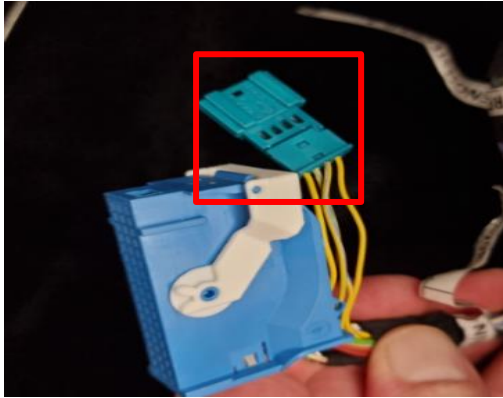


3. Remove socket housing protective cap by pressing locking tabs (1) in an upwards direction, and sliding the protective housing (2), and slide contact carrier (3) outwards.



Published date September 7, 2022

4. Locate and un-tape the previous temporary pol plug connector from the existing wiring harness:



**⚠** Note! Connector shown is for illustration purposes only so may be a different color/type.

5. Remove fitted pins from temporary pol connector by doing the following:
  - a) Hold down retaining hook (1) of pin contact in opening of carrier with a small screwdriver. Pull wire with pin contact in direction of arrow as far as secondary lock (2).
  - b) Hold down retaining hook in secondary lock (1) again and pull cable with pin contact (2) completely out of carrier (3).

Fig a)

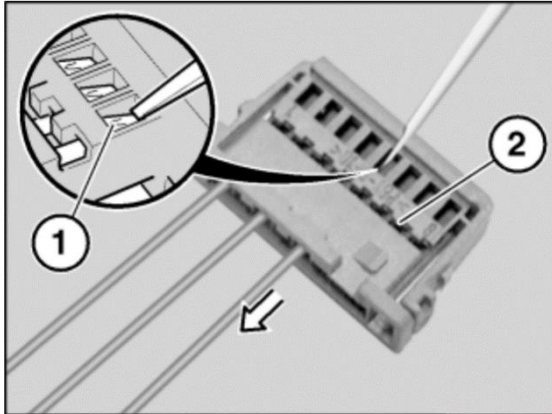
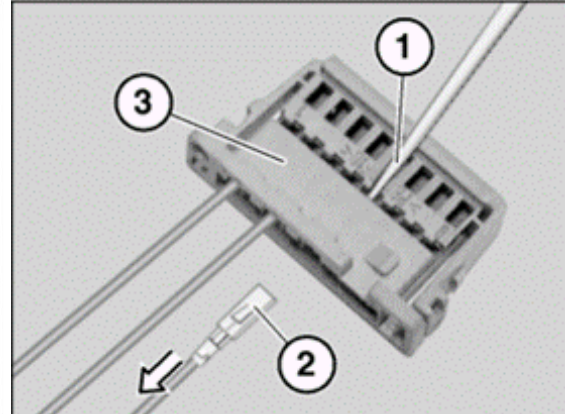


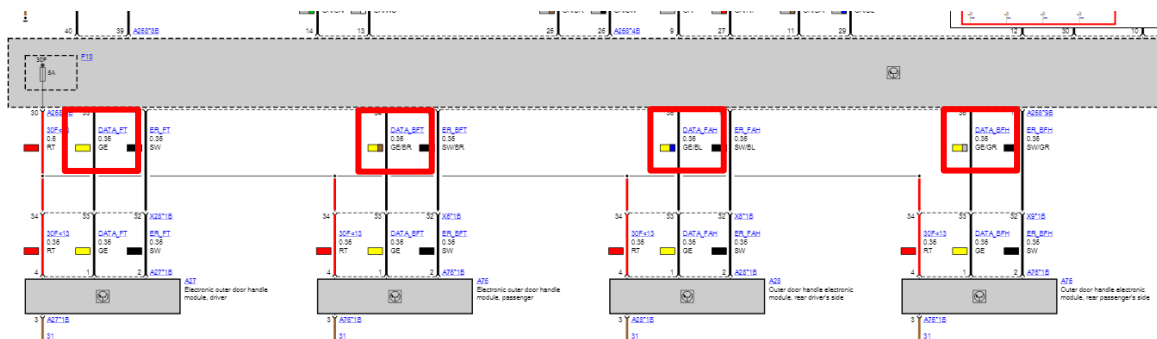
Fig b)



**⚠** Note! Connector shown is for illustration purposes only so may be a different color/type.

Published date September 7, 2022

6. Refit the following pin contacts into A258\*9B plug connector:
  - a) 33 (GE) – yellow
  - b) 34 (GE/BR) – yellow & brown
  - c) 35 (GE/BL) – yellow & blue
  - d) 36 (GE/GR) – yellow & grey



7. Refit plug connector A258\*9B to the BDC control unit.
8. Re-assemble the vehicle.

### Checking Door handle insert and if required, reworking

Note: Please consider the following requirements:

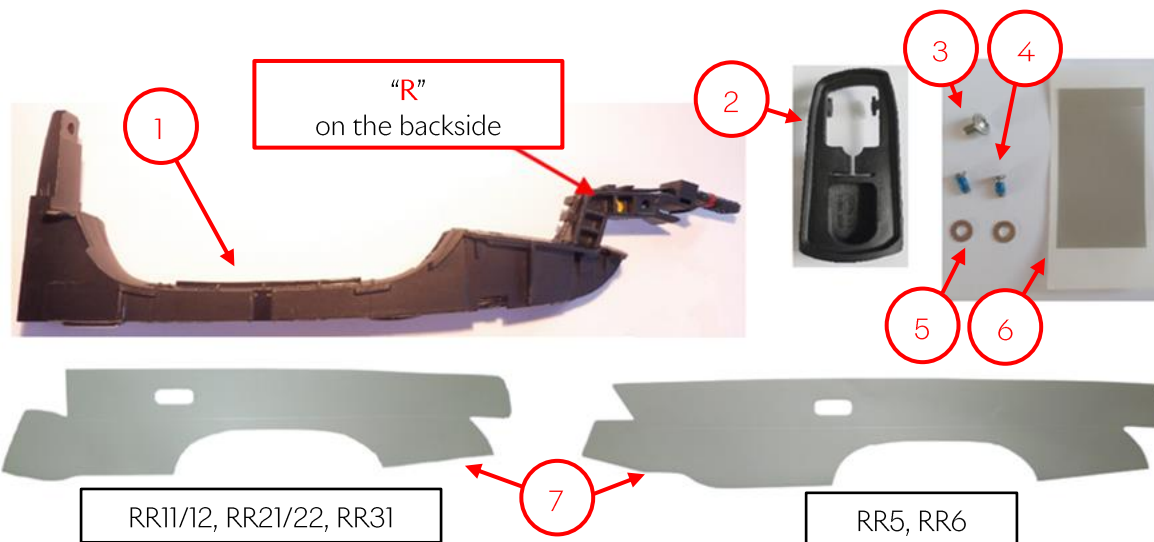
- The workplace must be tidy and clean.
- The workplace (bench) should be covered with a soft base to protect the metal surfaces on the door handles from scratches/damage, as they will need to be reused.
- Gloves must be used when handling the part.
- Tools/materials listed below are required to perform the rework:
  - Torx 6 and Torx 10 driver
  - Torque screwdriver (set to 0.4 - 0.5 Nm)
  - Plastic feeler gauge (source locally)
  - Suitable plastic fishbone tool (from the mandatory Mounting wedge set 00 9 310 / 83 30 0 490 527)
  - Screw-locking compound "Loctite 270" (83 19 2 210 337 or source locally)

Overview Kit contents:

- |                                       |   |
|---------------------------------------|---|
| 1 – Plastic handlebar electronics x 1 | 5 – Spacer washer x 2                     |
| 2 – Rubber pad x 1                    | 6 – Small button sensor foil x 1          |
| 3 – Round head screw x 1              | 7 – Protective foil x 2 (different sizes) |
| 4 – Countersunk screws x 2            |   |

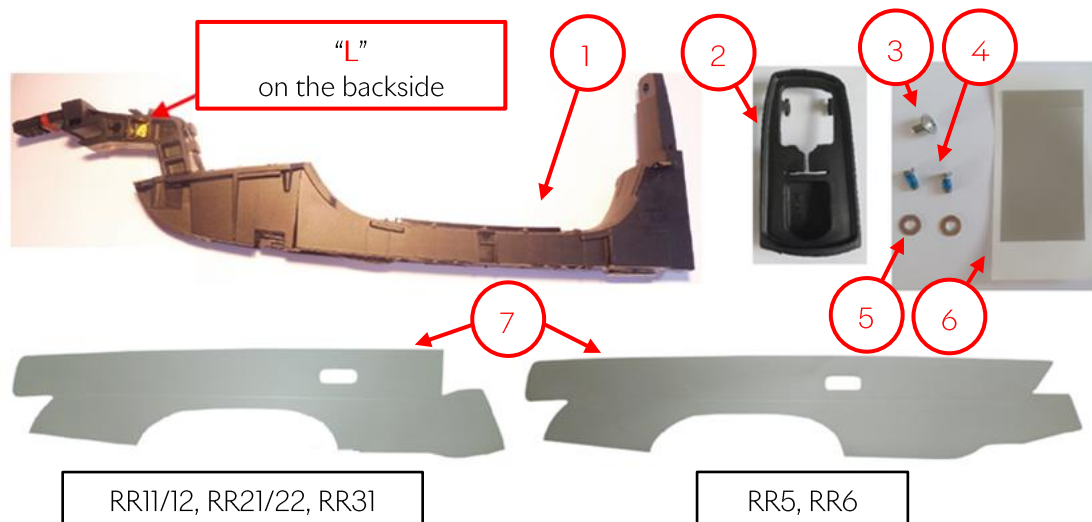
Published date September 7, 2022

### 5A73C75 kit



- ⚠ Note! Although 'R' is identified on the part, it does not always mean this kit is fitted on the right side only. For four door vehicles this part will be fitted on front left side too (see 'Parts allocation per model type' illustration below).
- ⚠ Note! Each kits contains two protective foil types: Small foil (for RR11/12, RR21/22, RR31) & Large foil (for RR5, RR6).

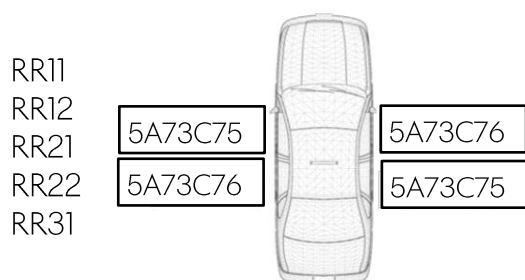
### 5A73C76 kit



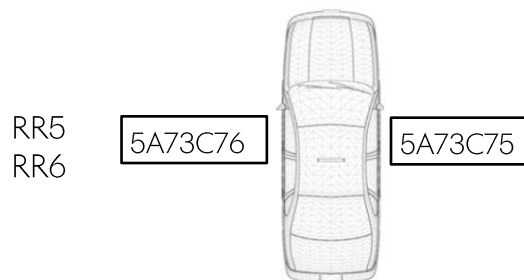
- ⚠ Note! Although 'L' is identified on the part, it does not always mean this kit is fitted on the left side only. For four door vehicles this part will be fitted on front right side too (see 'Parts allocation per model type' illustration below).
- ⚠ Note! Each kits contains two protective foil types: Small foil (for RR11/12, RR21/22, RR31) & Large foil (for RR5, RR6).

Published date September 7, 2022

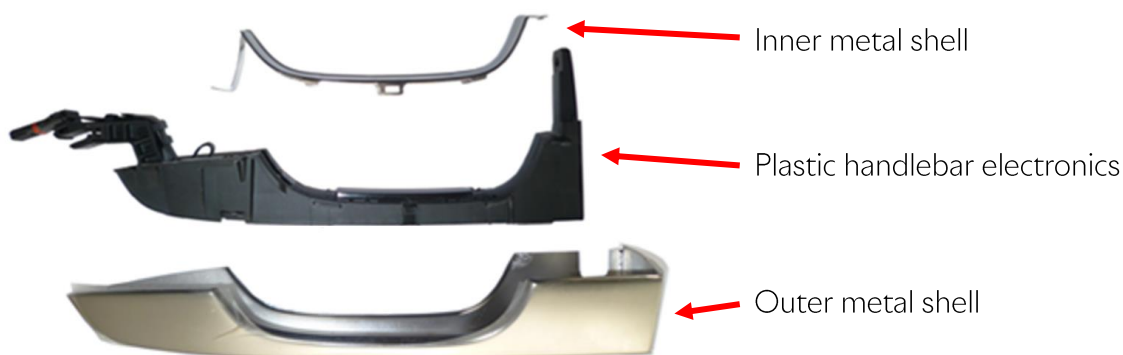
Parts allocation per model type:  
4 door car



2 door car



Door handle main elements:

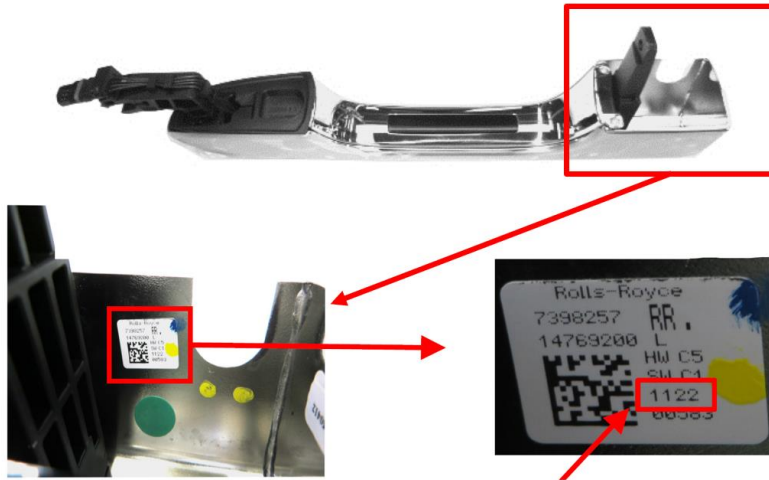


**Important Note: All 4 door handles must be checked and reworked (if required) using the procedure outlined below.**

1. Ensure door handles are clean before disassembly and apply the relevant protective foil from the repair kit.  
**⚠** Do not use the small button sensor foil at this point.
2. Please remove the outer door handles by following:
  - 51 21 170 | REP-REP-P-5121170-RR11 Removing and installing/replacing the outside door handle at the **front** left or right.
  - 51 22 170 | REP-REP-P-5122170-RR11 Removing and installing/replacing the outside door handle at the **rear** left or right.

Published date September 7, 2022

- Locate the door handle supplier build day code (DDDY format) number on the inner side of the outer metal shell.



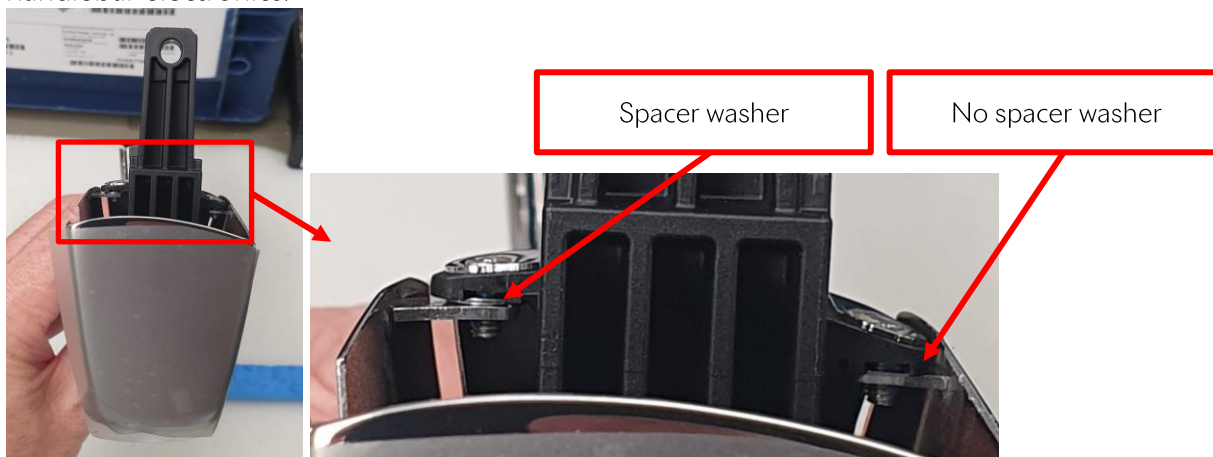
- Check the supplier build day code on the white label to see if it is between range 0192 and 0982 (from 19th to 98th day of 2022).

Batch Identification Number	Status
xxxx 0190 0191	↑ If number is lower than 0192, Part is OK – Do not replace insert
0192 xxxx xxxx xxxx 0982	} If number is in this range part is <b>Not OK</b> and will require insert replacement work to be performed
0983 0984 xxxx	↓ If number is higher than 0983 Part is OK – Do not replace insert

- If the number on label is outside (lower than 0192 or higher than 0982) of this range (OK part), go to Step 29 of this instruction.
  - If the number on label is within the day range above (**not OK** part), the insert will need to be replaced. Continue with repair from steps 7 onwards.
- Place the door handle to be repaired on a clean padded surface.

Published date September 7, 2022

6. Observe the original position and quantity of previously installed spacer washers that may be already fitted to the part, as this will need to be replicated after replacement of plastic handlebar electronics.



7. Remove the three screws and dispose of them and any spacer washers that may have previously been installed.

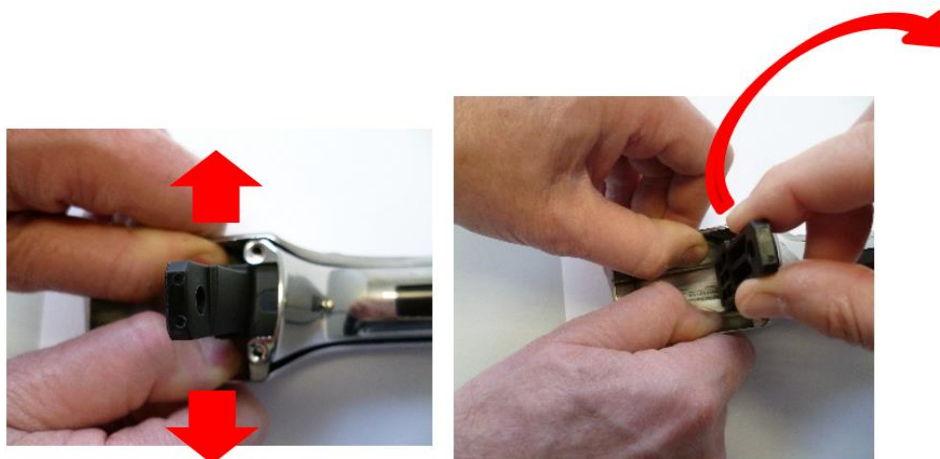
**⚠ Note!** Confirm the position and quantity of previously installed spacer washers.



**Risk of Damage!** Do not remove the inner metal shell at this stage.

Published date September 7, 2022

8. With the aid of a second person, gently spread open the outer metal shell apart and pull out the plastic handlebar electronics, with metal inner shell still fitted.



**Risk of Damage!** Do not open the sides of the outer metal shell more than necessary as it will deform the outer surface and create permanent damage to the part.

9. Once the outer metal shell has been removed, unclip the inner metal shell from the door handle electronics.



Published date September 7, 2022

10. Carefully remove the rubber pad from the door handle, take care not to damage the fastening tabs.



**⚠** Note! If tabs do break, a spare part has been included in the kit, but the recommendation is to use the original rubber part where possible.

11. Remove previously fitted plastic handlebar electronics.



**⚠** Note! For audit purposes, please keep the discarded plastic handlebar electronics for a period of 60 days (from claim credit date) in line with standard warranty policies and procedures guidelines.

12. Assemble the rubber pad onto the new plastic handlebar electronics, take care not to damage the fastening tabs.

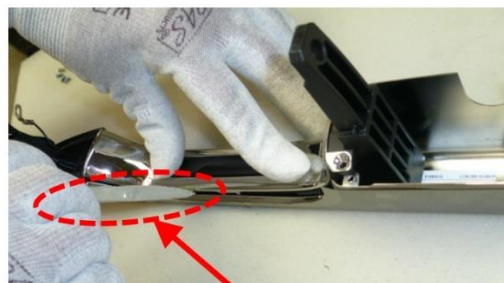


Published date September 7, 2022

13. Insert the inner metal shell into the plastic handlebar electronics and clip in place by hand.

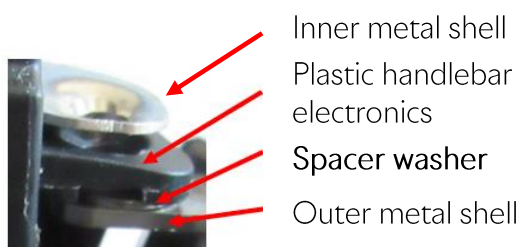


14. Insert the plastic handlebar electronics (complete with inner shell fitted) into the outer metal shell, use suitable trim tool to clip into place.



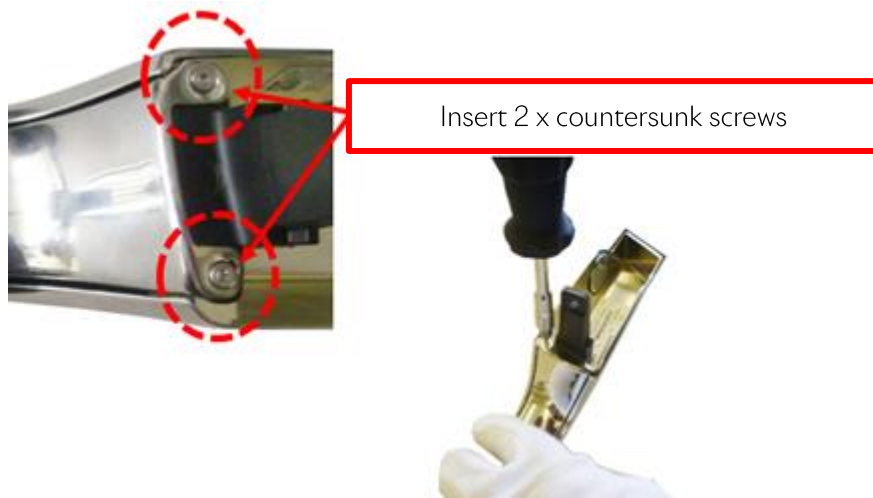
Clip in place using the fishbone auxiliary tool

15. If there were any spacer washers installed before the repair (Step 6), insert new spacer washers to the same side and in the same quantity as before. Spacer washers should be located between the outer metal shell lug and the plastic handlebar electronics.

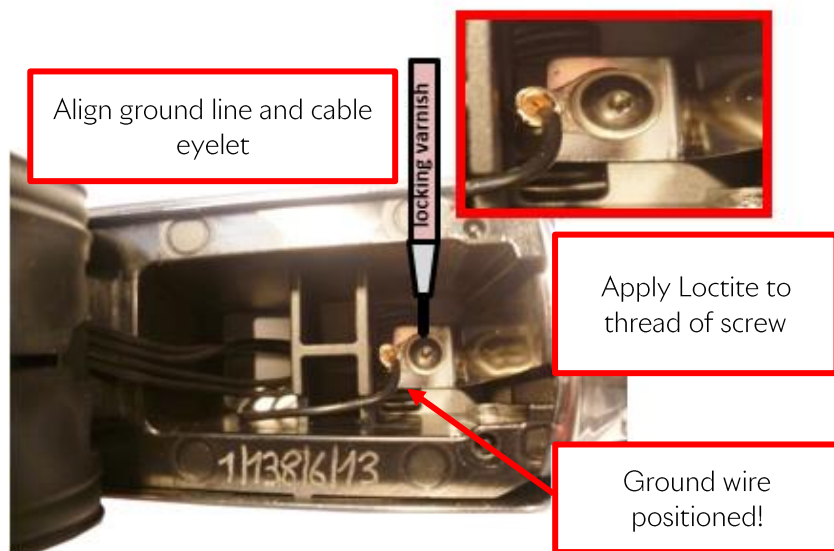


Published date September 7, 2022

16. Install the 2 x new countersunk screws from the kit and hand tighten only, to allow for alignment of the parts.

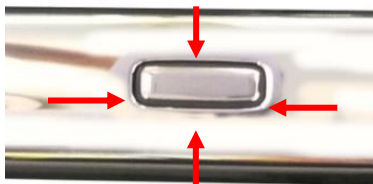


17. Apply Loctite to the thread of the 1 x new round head screw and install with grounding cable, and finger tighten only, to allow for alignment of the parts.

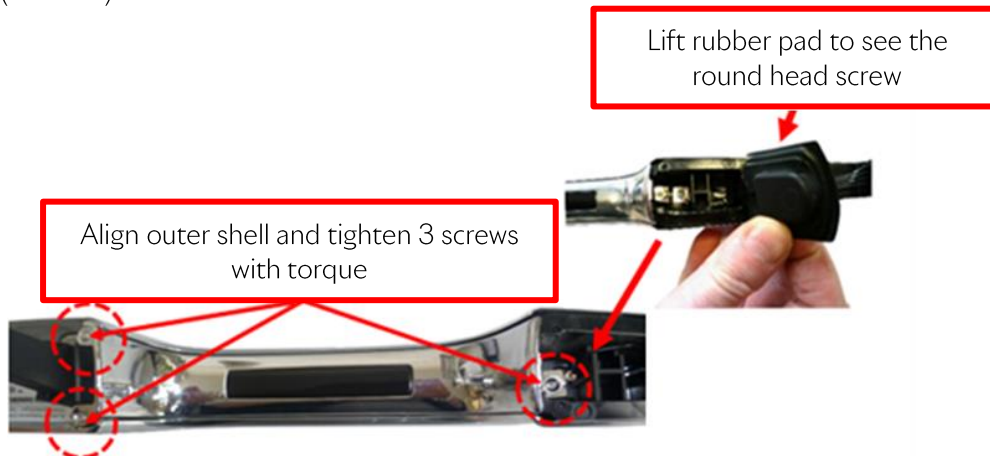


Published date September 7, 2022

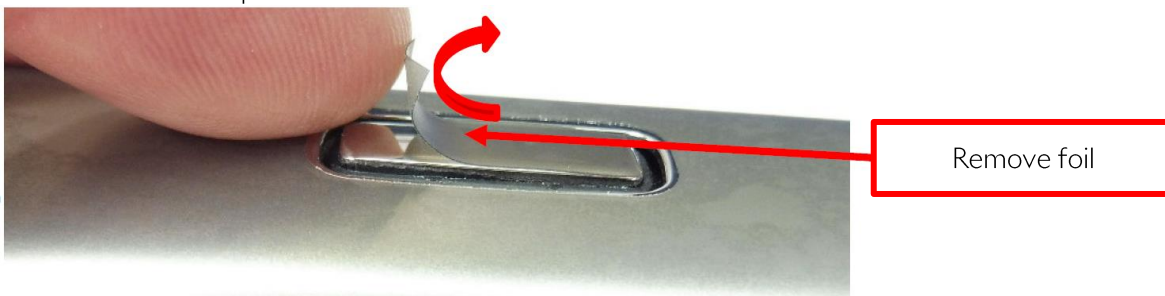
18. Align outer metal shell to button sensor, ensuring that there is an even spaced gap all the way around the button sensor.



19. Tighten 2 x countersunk screws with hand torque (set to 0.4 - 0.5 Nm) - screwdriver (Torx 6), then tighten the round head screw (behind the handle hook) with the torque screwdriver (Torx 10).

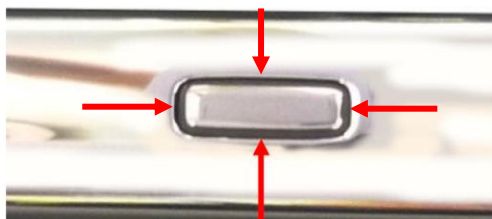


20. Remove the small protective foil from the surface of the button sensor.



Published date September 7, 2022

21. Double check again the alignment of the button sensor within the outer metal shell to ensure that it is centralized. Correct alignment gap should be 1.2 mm with  $\pm 0.2$  mm tolerance all the way around (min 1.0 mm / max 1.4 mm gap).

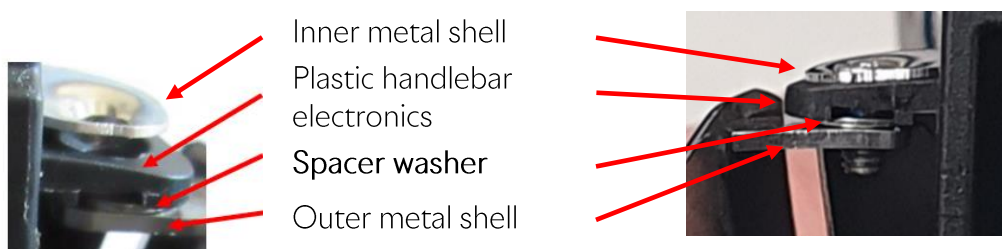


Button sensor alignment centered.  
Gap around button sensor:  $1.2 \pm 0.2$  mm

- If the button sensor alignment gap is within the required range ( $1.2 \pm 0.2$  mm) – adjustment is not needed. Please go to Step 28 of this repair instruction.
  - If the button sensor alignment gap is outside the required range ( $1.2 \pm 0.2$  mm) – further adjustment is needed. Follow Steps 22 – 27 for the additional work.
22. Steps 22 – 27 are **only required if button sensor alignment it not OK.**  
Remove the 2 x countersunk screws and loosen round head screw (do not fully remove).

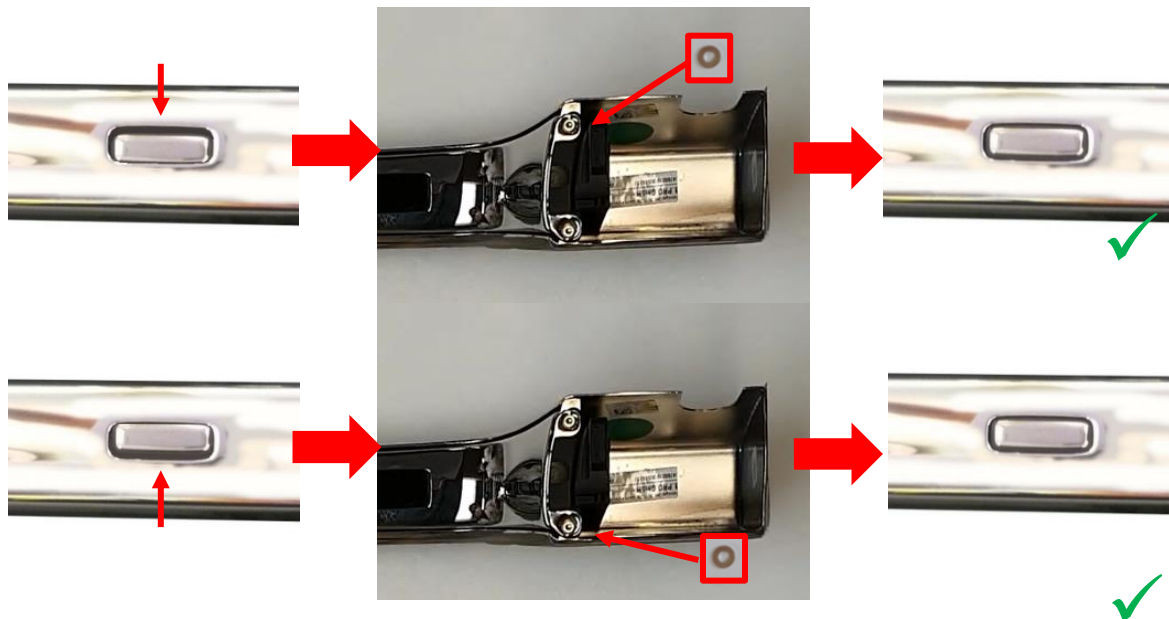


23. Remove or place a single spacer washer between the outer metal shell and door plastic handlebar electronics to adjust the gaping.



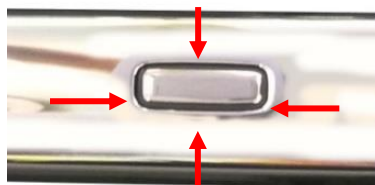
Published date September 7, 2022

A spacer washer reduces the gap between the button sensor and the outer shell on the same side where it is inserted.



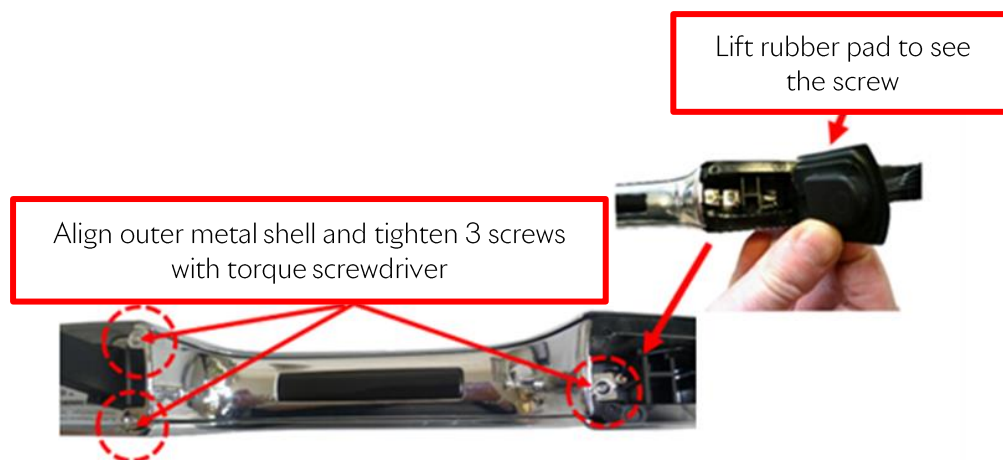
24. Finger-tighten the 2 countersunk screws.

25. Align the outer metal shell to the door handle electronics button sensor.



Published date September 7, 2022

26. Using the torque screwdriver (set to 0.4 - 0.5 Nm) tighten the 2 x countersunk screws (Torx 6) and the round head screw, behind the rubber pad (Torx 10).



27. Check the alignment of the button sensor within the outer metal shell again. Correct alignment gap is  $1.2 \pm 0.2$  mm (min 1.0 mm / max 1.4 mm gap).
28. Stick the small button sensor foil (from the repair kit) over the button sensor, to prevent damage during refitment of the handle to the vehicle.



29. Refit the door handle.
30. Repeat Steps 1 – 29 to all door handles.
31. Check the Comfort Entry door handles are functioning correctly.
32. Connect to the vehicle with ISTA, clear any fault codes entered as a result door handle wiring being disconnected.

### Parts Information

With the launch of the campaign, we will be issuing specific ordering instructions to ensure we provide a steady supply of parts to our entire dealer network.

Published date September 7, 2022

During the initial launch phase of the campaign, we will not be accepting stock orders for multiple quantities, any orders received for multiple quantities will be cancelled.

This means that when parts are required for a specific vehicle, a single order must be raised, ensuring the VIN is entered into the order.

For RR11/12, RR21/22, RR31 models (4-door vehicles)

Description	Part Number	Quantity
Outside door handle kit	51 21 5 A73 C75	2
Outside door handle kit	51 21 5 A73 C76	2

**Note!** Other small parts such as clips, blind rivets, screws, nuts, and seals, which must be replaced based on the ISTA repair instructions, are to be selected from the Electronic Parts Catalogue according to the respective vehicle type and invoiced under the special defect code.

### Warranty Information

Claims are subject to current Warranty terms.

Defect Code: 00 51 49 05 00

Warranty information for RR11/RR12 models:

Labor Code	Description	Labor	Notes
51 43 075	Remove and install/replace side trim panel, footwell, on A-pillar, right	4 FRU	Main work
00 99 000	Re-pinning wiring	2 FRU	Open time
51 21 790	Removing and installing/replacing both outside door handles at the front	2 FRU	Plusposition
51 22 690	Removing and installing/replacing both outside door handles at the rear	2 FRU	Plusposition
51 99 000	Attaching protective foils and checking door handle inserts	2 FRU	Open time
72 99 000	Replacing door handle inserts (if required)	2-8* FRU	Open time *2 FRU for each door handle insert replacement
00 00 556	Performing vehicle test	3 FRU	Plusposition

Warranty information for RR21/RR22 models:

Labor Code	Description	Labor	Notes
------------	-------------	-------	-------

Published date September 7, 2022

51 43 075	Remove and install/replace side trim panel, footwell, on A-pillar, right	6 FRU	Main work
00 99 000	Re-pinning wiring	2 FRU	Open time
51 21 790	Removing and installing/replacing both outside door handles at the front	2 FRU	Plusposition
51 22 690	Removing and installing/replacing both outside door handles at the rear	2 FRU	Plusposition
51 99 000	Attaching protective foils and checking door handle inserts	2 FRU	Open time
72 99 000	Replacing door handle inserts (if required)	2-8* FRU	Open time *2 FRU for each door handle insert replacement
00 00 556	Performing vehicle test	3 FRU	Plusposition

Warranty information for **RR31** model:

Labor Code	Description	Labor	Notes
51 43 075	Remove and install/replace side trim panel, footwell, on A-pillar, right	5 FRU	Main work
00 99 000	Re-pinning wiring	2 FRU	Open time
51 21 790	Removing and installing/replacing both outside door handles at the front	2 FRU	Plusposition
51 22 690	Removing and installing/replacing both outside door handles at the rear	2 FRU	Plusposition
51 99 000	Attaching protective foils and checking door handle inserts	2 FRU	Open time
72 99 000	Replacing door handle inserts (if required)	2-8* FRU	Open time *2 FRU for each door handle insert replacement
00 00 556	Performing vehicle test	3 FRU	Plusposition

### Contact

If you have further questions, please contact your Regional Aftersales Manager (RAM).

**Published date** September 7, 2022