

2023 ES 250, ES 300h, ES 350 Pre-Delivery Service (PDS)

Service Category General

Section Pre-Delivery Service

Market USA

Toyota Supports
ASE Certification 

Applicability

YEAR(S)	MODEL(S)	ADDITIONAL INFORMATION
2023	ES250, ES300H, ES350	

Introduction

This bulletin contains the vehicle specific pre-delivery services for 2023 model year ES 250, ES 300 Hybrid, and ES 350 vehicles. Additionally, refer to the applicable Pre-Delivery Service (PDS) Check Sheet for services to be performed.

Warranty Information

OP CODE	DESCRIPTION	TIME	OFP	T1	T2
N/A	Not Applicable to Warranty	–	–	–	–

2023 ES 250, ES 300h, ES 350 Pre-Delivery Service (PDS)

Required Tools & Equipment

REQUIRED EQUIPMENT	SUPPLIER	PART NUMBER	QTY
Techstream ADVi*	ADE	TSADVUNIT	1
Techstream 2.0		TS2UNIT	
Techstream Lite		TSLITEPDLR01	
Techstream Lite (Green Cable)		TSLP2DLR01	

*Essential SST.

NOTE

- Only ONE of the Techstream units listed above is required.
- Software version 17.10.012 or later is required.
- Additional Techstream units may be ordered by calling Approved Dealer Equipment (ADE) at 1-800-368-6787.

*Essential SST.

Procedures

- [Tire Pressure Warning System \(TPWS\) Initialization](#) 2
- [Front Wheel Opening Extension Pad Installation](#) 3
- [Front License Plate and Mounting Bracket Installation*](#) 4
- [Installation of Rubber Body Plugs*](#) 6

*If Applicable

Tire Pressure Warning System (TPWS) Initialization

Refer to the applicable Repair Manual for the TPWS initialization procedure ([ES 250](#) / [ES 300h](#) / [ES 350](#)). Note the spare tire does NOT have a TPWS sensor.

NOTE

To adjust the tire pressure correctly when the outside temperature is significantly colder than shop temperature, perform a Health Check using Techstream and select the compensation tire pressure checkbox. Compensation pressures will display on the Health Check results screen. Adjust the tire pressure when the tires are cold.

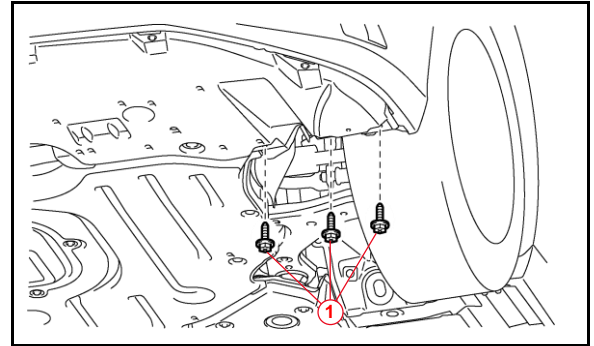
2023 ES 250, ES 300h, ES 350 Pre-Delivery Service (PDS)

Front Wheel Opening Extension Pad Installation

The front wheel opening extension pad set (right and left front wheel opening extension pads) are located in the luggage compartment at the assembly plant to avoid damage in transit.

1. Remove the three self-tapping screws from the engine under cover on the left side (the self-tapping screws will be reused for the installation).

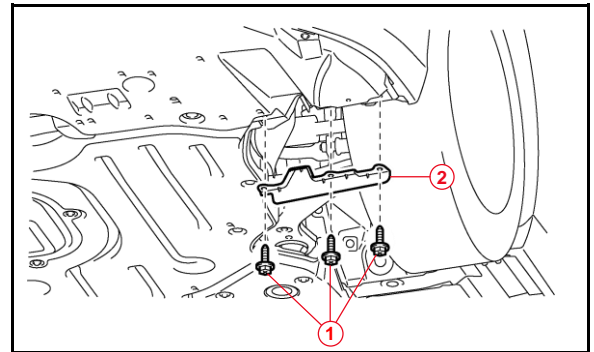
Figure 1.



1	Remove Self-tapping Screws
----------	-----------------------------------

2. Place the left front wheel opening extension pad on the installation position as shown and tighten the three self-tapping screws.

Figure 2.



1	Install Self-tapping Screws
2	Left Front Wheel Opening Extension Pad

3. Repeat steps 1 and 2 for the right-hand side.

2023 ES 250, ES 300h, ES 350 Pre-Delivery Service (PDS)

Front License Plate and Mounting Bracket Installation

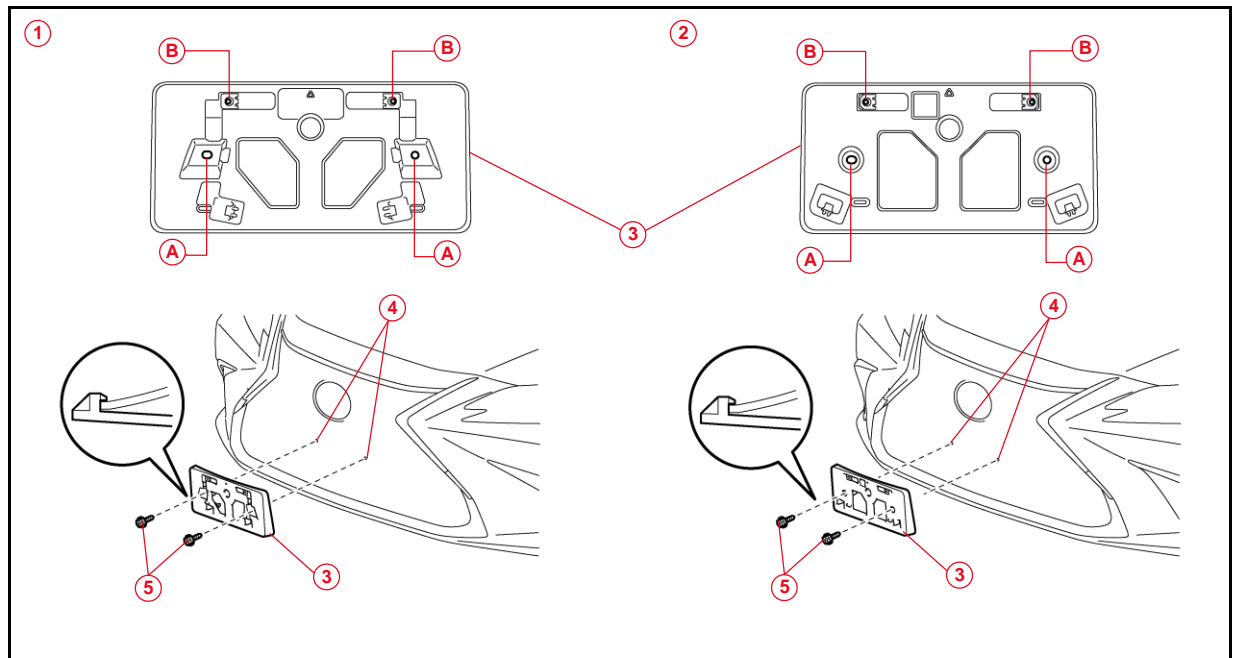
The front license plate mounting bracket and two self-tapping screws are stored in the vehicle at the assembly plant. For states that require a front license plate, install the front license plate and mounting bracket during PDS.

1. Align holes "A" of the mounting bracket with the dimples on the radiator lower grille.

NOTE

- Holes "A" are used for installation of the front license plate mounting bracket to the radiator lower grille.
- Holes "B" are used for installation of the front license plate to the mounting bracket.

Figure 3.



1	Type A
2	Type B
3	Mounting Bracket

4	Dimple
5	Self-tapping Screw

2023 ES 250, ES 300h, ES 350 Pre-Delivery Service (PDS)

Front License Plate and Mounting Bracket Installation (continued)

- Screw the two self-tapping screws directly into the dimples to install the front license plate mounting bracket.

NOTICE

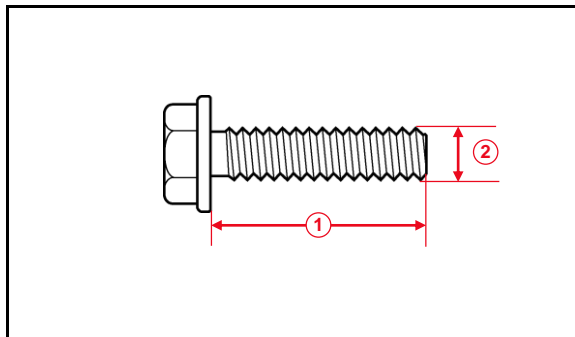
- Do NOT predrill holes into the dimples on the front bumper cover.
- Do NOT overtighten the self-tapping screws.

- Install the front license plate onto the mounting bracket using two noncorroding bolts with the following dimensions:

Nominal Length: 15.0 mm (0.59 in.)

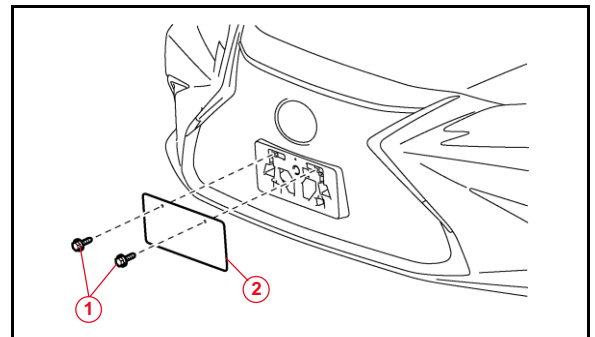
Diameter: 6.0 mm (0.24 in.)

Figure 4.



1	Nominal Length
2	Diameter

Figure 5.



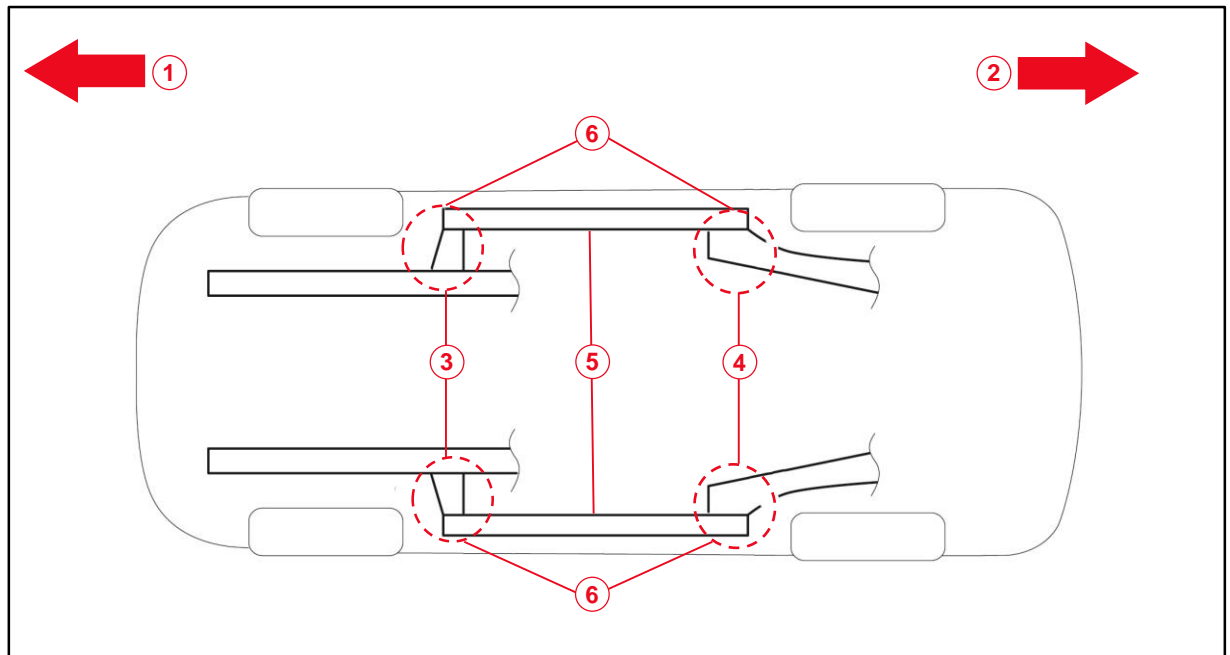
1	Bolt
2	Front License Plate

2023 ES 250, ES 300h, ES 350 Pre-Delivery Service (PDS)

Installation of Rubber Body Plugs

1. Confirm the number of plugs in the glove box. If two plugs are present, perform substep 2A ONLY. If four plugs are present, perform substep 2A AND substep 2B.
2. Install plugs according the instructions below by confirming the number of plugs in the glove box.
 - A. Install two plugs in the rear side member hole or rocker inner hole as shown.
 - B. Install two plugs in the torque box hole or rocker inner hole as shown.

Figure 6.



1	Front Side
2	Rear Side
3	Torque Box Hole or Rocker Inner Hole
4	Rear Side Member Hole or Rocker Inner Hole
5	Rocker Inner
6	Install Plug Here (if Applicable)

NOTICE

- The installation of these plugs is required to prevent rust.
- These plugs are stored in the glove box.
- The number of plugs may vary according to production locations in the same vehicle model.