

Clicking Noise From the Front Wheel Area During Slow Speed Turns

Service Category Brake

Section Brake (front)

Market USA

Toyota Supports
ASE Certification 

Applicability

YEAR(S)	MODEL(S)	ADDITIONAL INFORMATION
2016 - 2017	GS200T, RC200T	
2018 - 2019	GS300	
2013 - 2020	GS350	
2013 - 2018	GS450H	
2021 - 2022	IS350	
2016 - 2022	RC300, RC350	

Introduction

Some 2013 – 2022 model year Lexus vehicles equipped with a 2WD drivetrain and the F Sport package may exhibit a clicking noise from the front wheel area during slow (parking lot) speed turns. The clicking noise that can be heard during sharp turns is a normal condition for certain vehicles originally equipped with a lightweight two-piece aluminum rotor assembly. For customers who find this objectionable, an alternative steel rotor is available. Before performing the repair in this bulletin, it is recommended to review the visual differences of the steel rotor with the customer. Follow the Repair Procedure in this bulletin to address this condition.

Clicking Noise From the Front Wheel Area During Slow Speed Turns

Warranty Information

MODEL	OP CODE	DESCRIPTION	TIME	OFP	T1	T2
GS 200t, GS 300, GS 350, GS 450h, RC 200t, RC 300, and RC 350	BR1941	Install Painted Front Axle Hub Shim	1.4	43516-#####**	91	41
	Combo Code A	Install Steel Rotors and New Brake Pads	0.2			
IS 350	434021	Install Painted Front Axle Hub Shim	*			
	Combo Code A					

*See the flat rate manual.

**Warranty claim MUST be submitted with the correct 10-digit OFP. Choose the correct OFP for the vehicle being repaired by searching for the parts in the Electronic Parts Catalog using the VIN filter.

APPLICABLE WARRANTY

- This repair is covered under the Lexus Basic Warranty. This warranty is in effect for 48 months or 50,000 miles, whichever occurs first, from the vehicle's in-service date.
- Warranty application is limited to occurrence of the specified condition described in this bulletin.

Parts Information

PART NUMBER		PART NAME	QTY
PREVIOUS	NEW		
43512-30370 43512-30371	43512-WY010	Disc, FR RH (Steel Center)**	1
43516-30060 43516-30061	43516-WY020	Disc, FR LH (Steel Center)**	1
04465-30491		Pad Kit, Disc Brake, Front	1
04465-24060*			
47791-30020		Plate, Disc Brake AIR Guide***	2

*For 2021 model year vehicles or newer, part number 04465-24060 should be used.

**If it is determined the rotors will be replaced, BOTH rotors MUST be replaced.

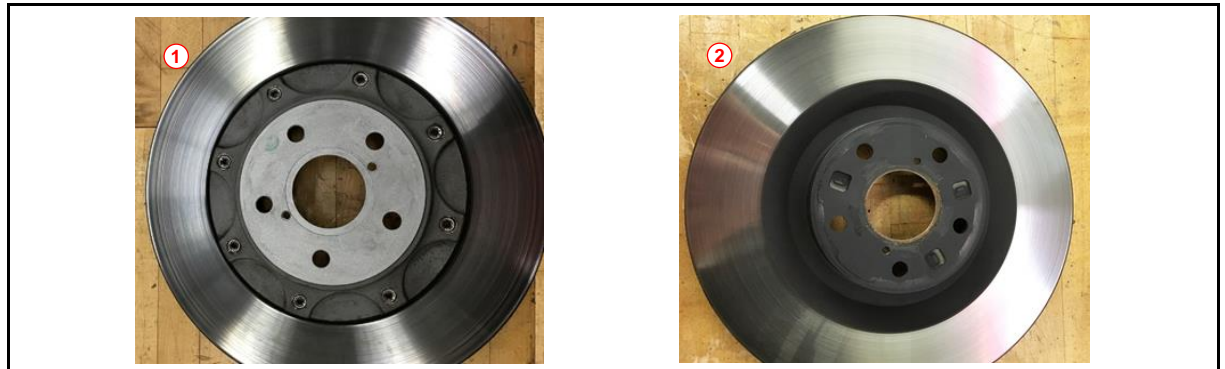
***The part number includes one shim. This shim is the same for the right and left sides.

Clicking Noise From the Front Wheel Area During Slow Speed Turns

Steel Rotor Visual Differences

If the vehicle is a GS 200t, GS 300, GS 350, GS 450h, RC 200t, RC 300, or RC 350 model, review the visual differences of the steel rotor with the customer BEFORE replacing the rotors.

Figure 1. Rotor Differences



1	Before (Aluminum)
2	After (Steel)

Figure 2. Example of One Wheel Type for the Vehicle*



1	Before (Aluminum)
2	After (Steel)

*Other wheel types may have slightly different results.

Clicking Noise From the Front Wheel Area During Slow Speed Turns

Repair Procedure

1. Is the vehicle equipped with a 2WD drivetrain and the F Sport package?
 - **YES** — Continue to step 2.
 - **NO** — This bulletin does NOT apply. Continue diagnosis using the applicable Repair Manual.

2. Does the vehicle exhibit a clicking noise from the front wheel area during a slow speed turn?

NOTE

Refer to the video link below for an example of the clicking noise condition:

[Clicking Noise Example](#)

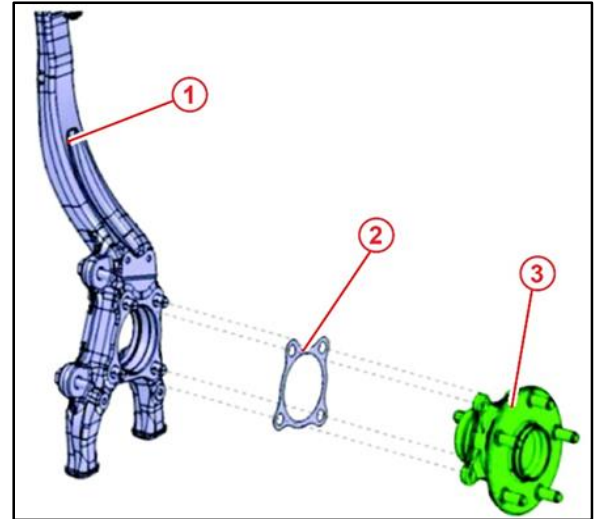
- **YES** — Continue to step 3.
 - **NO** — This bulletin does NOT apply. Continue diagnosis using the applicable Repair Manual.
3. Install the front axle hub shim (disc brake AIR guide plate).
 - A. Remove the front hub bearing.
Refer to TIS, applicable model and model year Repair Manual:
 - [2016](#) / [2017](#) GS 200t:
Drivetrain – Axle/Differential – “Axle and Differential: Front Axle Hub: Removal”
 - [2018](#) / [2019](#) GS 300:
Drivetrain – Axle/Differential – “Axle and Differential: Front Axle Hub: Removal”
 - [2013](#) / [2014](#) / [2015](#) / [2016](#) / [2017](#) / [2018](#) / [2019](#) / [2020](#) GS 350:
Drivetrain – Axle/Differential – “Axle and Differential: Front Axle Hub: Removal”
 - [2013](#) / [2014](#) / [2015](#) / [2016](#) / [2017](#) / [2018](#) GS 450h:
Drivetrain – Axle/Differential – “Axle and Differential: Front Axle Hub: Removal”
 - [2016](#) / [2017](#) RC 200t:
Drivetrain – Axle/Differential – “Axle and Differential: Front Axle Hub: Removal”
 - [2016](#) / [2017](#) / [2018](#) / [2019](#) / [2020](#) / [2021](#) / [2022](#) RC 300:
Drivetrain – Axle/Differential – “Axle and Differential: Front Axle Hub: Removal”
 - [2015](#) / [2016](#) / [2017](#) / [2018](#) / [2019](#) / [2020](#) / [2021](#) / [2022](#) RC 350:
Drivetrain – Axle/Differential – “Axle and Differential: Front Axle Hub: Removal”
 - [2021](#) / [2022](#) IS 350:
Drivetrain – Axle/Differential – “Axle and Differential: Front Axle Hub: Removal”

Clicking Noise From the Front Wheel Area During Slow Speed Turns

Repair Procedure (continued)

- B. Install the painted brake shim between the hub bearing and knuckle as shown.

Figure 3.



1	Knuckle
2	Shim
3	Hub Bearing

4. Is the vehicle a GS 200t, GS 300, GS 350, GS 450h, RC 200t, RC 300, or RC 350 model?
 - **YES** — Go to step 7.
 - **NO** — Continue to step 5.

5. Reinstall the front hub bearing.
 Refer to TIS, applicable model and model year Repair Manual:
 - [2021](#) / [2022](#) IS 350:
Drivetrain – Axle/Differential – “Axle and Differential: Front Axle Hub: Installation”

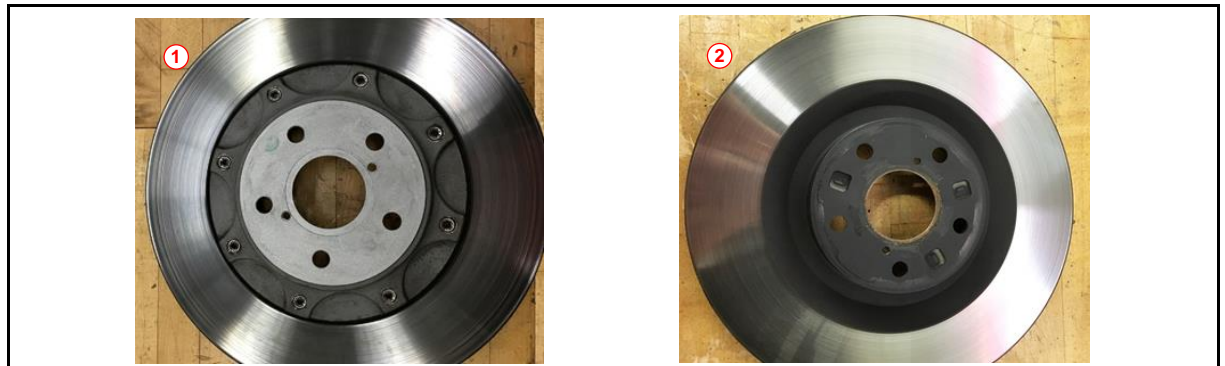
6. The repair is complete. Test-drive the vehicle to confirm the clicking noise is no longer present.

Clicking Noise From the Front Wheel Area During Slow Speed Turns

Repair Procedure (continued)

7. Review the visual differences of the steel rotor with the customer BEFORE replacing the rotors.

Figure 4. Rotor Differences



1	Before (Aluminum)
2	After (Steel)

Figure 5. Example of One Wheel Type for the Vehicle*



1	Before (Aluminum)
2	After (Steel)

*Other wheel types may have slightly different results.

8. Does the customer wish to proceed with the repair AFTER reviewing the visual differences of the steel rotor?
 - **YES** — Continue to step 9.
 - **NO** — Go to step 10. Brake rotor replacement is NOT required, ONLY axle hub shim installation is required.

Clicking Noise From the Front Wheel Area During Slow Speed Turns

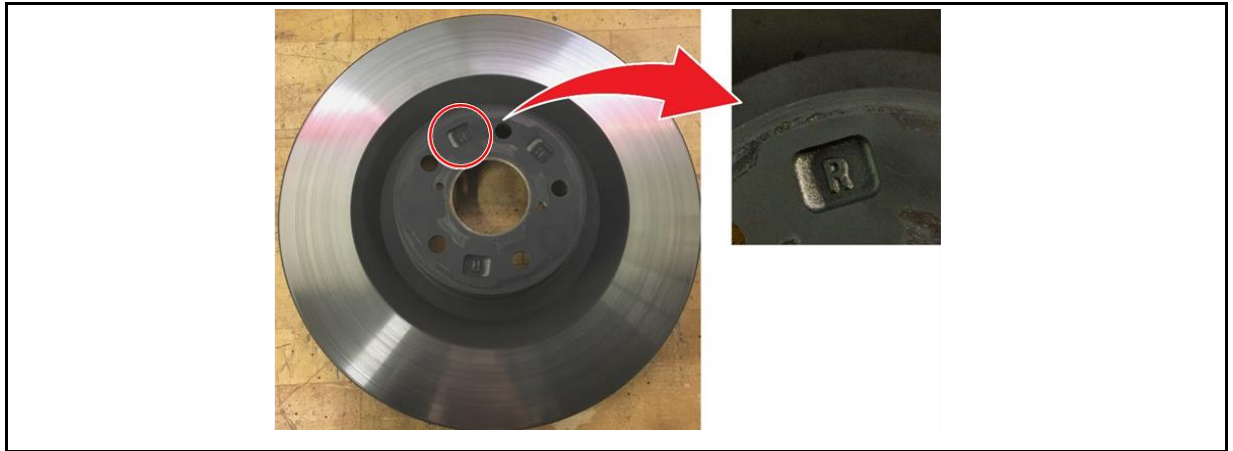
Repair Procedure (continued)

9. Install the updated (steel one-piece) front rotors and brake pad kit.

NOTE

NEW steel one-piece rotors do NOT have paint marks as shown in the Repair Manual. They are marked with an "L" or an "R" to indicate which location to install, as shown.

Figure 6.



Refer to TIS, applicable model and model year Repair Manual:

- [2016](#) / [2017](#) GS 200t:
Drivetrain – Axle/Differential – “Axle and Differential: Front Axle Hub: Installation”
- [2018](#) / [2019](#) GS 300:
Drivetrain – Axle/Differential – “Axle and Differential: Front Axle Hub: Installation”
- [2013](#) / [2014](#) / [2015](#) / [2016](#) / [2017](#) / [2018](#) / [2019](#) / [2020](#) GS 350:
Drivetrain – Axle/Differential – “Axle and Differential: Front Axle Hub: Installation”
- [2013](#) / [2014](#) / [2015](#) / [2016](#) / [2017](#) / [2018](#) GS 450h:
Drivetrain – Axle/Differential – “Axle and Differential: Front Axle Hub: Installation”
- [2016](#) / [2017](#) RC 200t:
Drivetrain – Axle/Differential – “Axle and Differential: Front Axle Hub: Installation”
- [2016](#) / [2017](#) / [2018](#) / [2019](#) / [2020](#) / [2021](#) / [2022](#) RC 300:
Drivetrain – Axle/Differential – “Axle and Differential: Front Axle Hub: Installation”
- [2015](#) / [2016](#) / [2017](#) / [2018](#) / [2019](#) / [2020](#) / [2021](#) / [2022](#) RC 350:
Drivetrain – Axle/Differential – “Axle and Differential: Front Axle Hub: Installation”

10. Test-drive the vehicle to confirm the clicking noise is no longer present.