



STAR ONLINE PUBLICATION



Case Number: S2208000021

Release Date: January 2022

Symptom/Vehicle Issue: Camera Image Options Surround View System Cannot Be Selected From The Radio Touch Screen, DTC **B1496 LOST LOW VOLTAGE DIFFERENTIAL SIGNAL (LVDS) CONNECTION WITH CVPM**

Customer Complaint/Technician Observation: Owner complains the camera display is blank and he cannot select any camera option from the radio, radio selection buttons appear locked. Technician observed camera radio selections are not responding to the selection, no changes from selections. Active DTC **B1496-00 - LOST LOW VOLTAGE DIFFERENTIAL SIGNAL (LVDS) CONNECTION WITH CVPM.**

Repair Procedure: Use the following test cables as needed to isolate the J220 circuit from the *radio* to the CVPAM. Use the below information Fig 1, 3 as a guide to isolate J220 involved coaxial. There is a duplicate J220 for CVPAM to the camera at the rear spoiler. Use test leads **9977-6-11, 9977-8-2, 9977-6-7** from the CVPAM to the Radio.

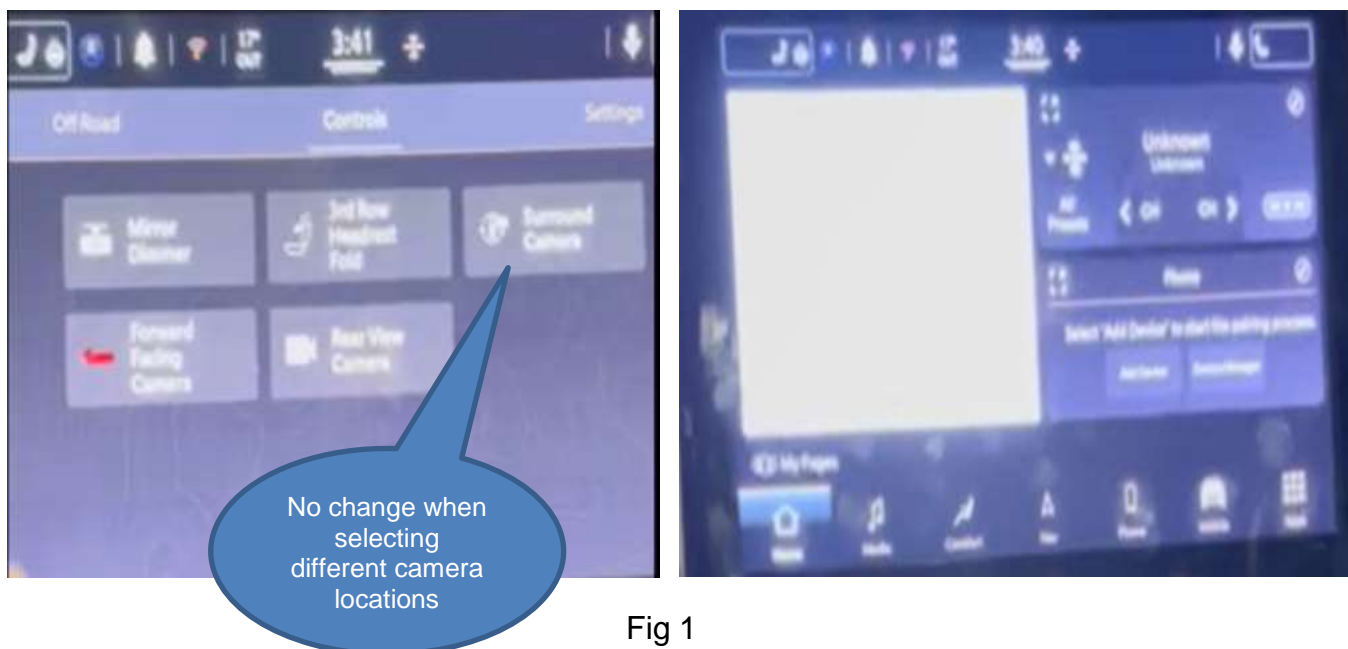


Fig 1

This document does not authorize warranty repairs. This communication documents a record of past experiences. STAR Online does not provide any conclusions about what is wrong with the vehicle. Rather, it captures all previous cases known that appear to be similar or related to the vehicle symptom / condition. You are the expert, and you are responsible for deciding on the appropriate course of action.

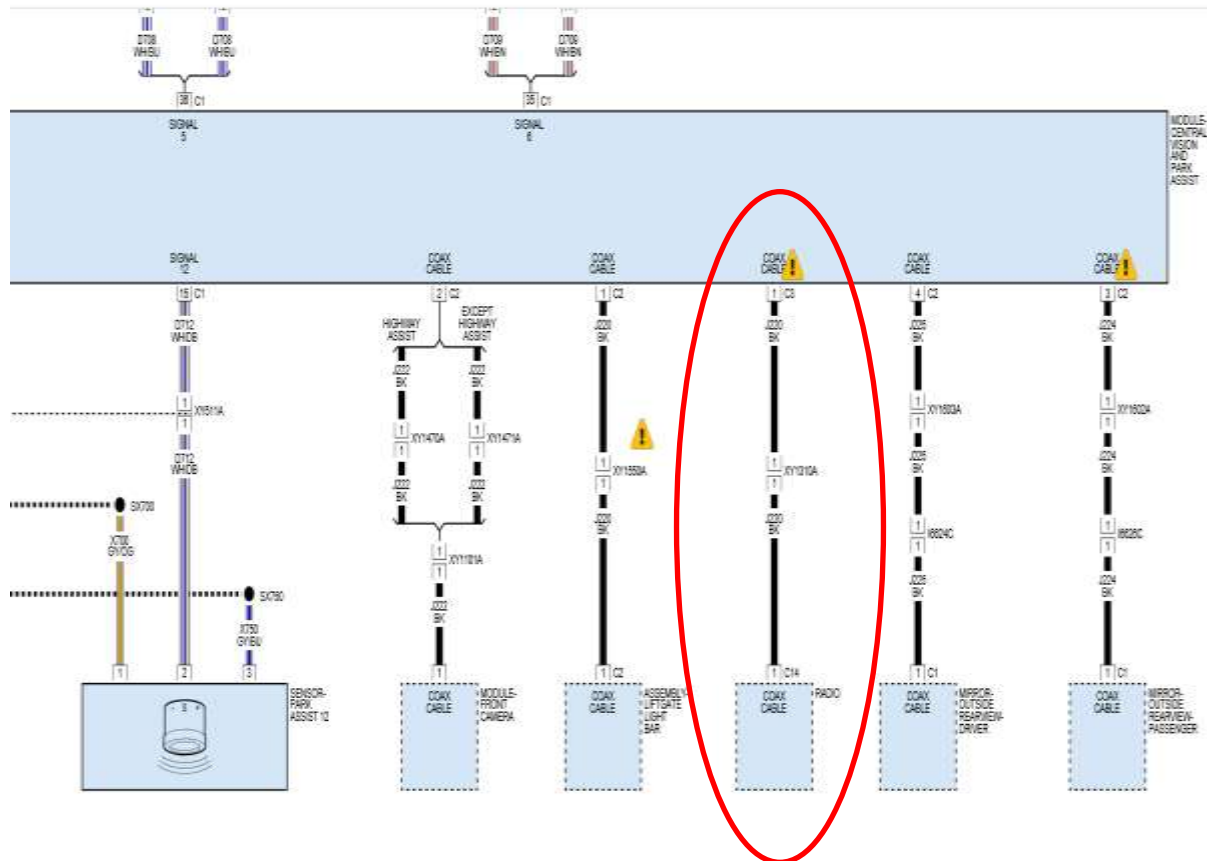
Contact STAR Center, or your Technical Assistance Center Via TechCONNECT or eCONTACT ticket if no solution is found



STAR ONLINE PUBLICATION



Wiring Diagram - PARK ASSIST SYSTEM - PREMIUM



For DTC B1496-00 – focus on the CVPAM J220 coaxial between CVPAM and the radio there is a separate J220 circuit from the CVPAM to the rear camera. See complete circuit below.

Fig 2

This document does not authorize warranty repairs. This communication documents a record of past experiences. STAR Online does not provide any conclusions about what is wrong with the vehicle. Rather, it captures all previous cases known that appear to be similar or related to the vehicle symptom / condition. You are the expert, and you are responsible for deciding on the appropriate course of action.

Contact STAR Center, or your Technical Assistance Center Via TechCONNECT or eCONTACT ticket if no solution is found



STAR ONLINE PUBLICATION

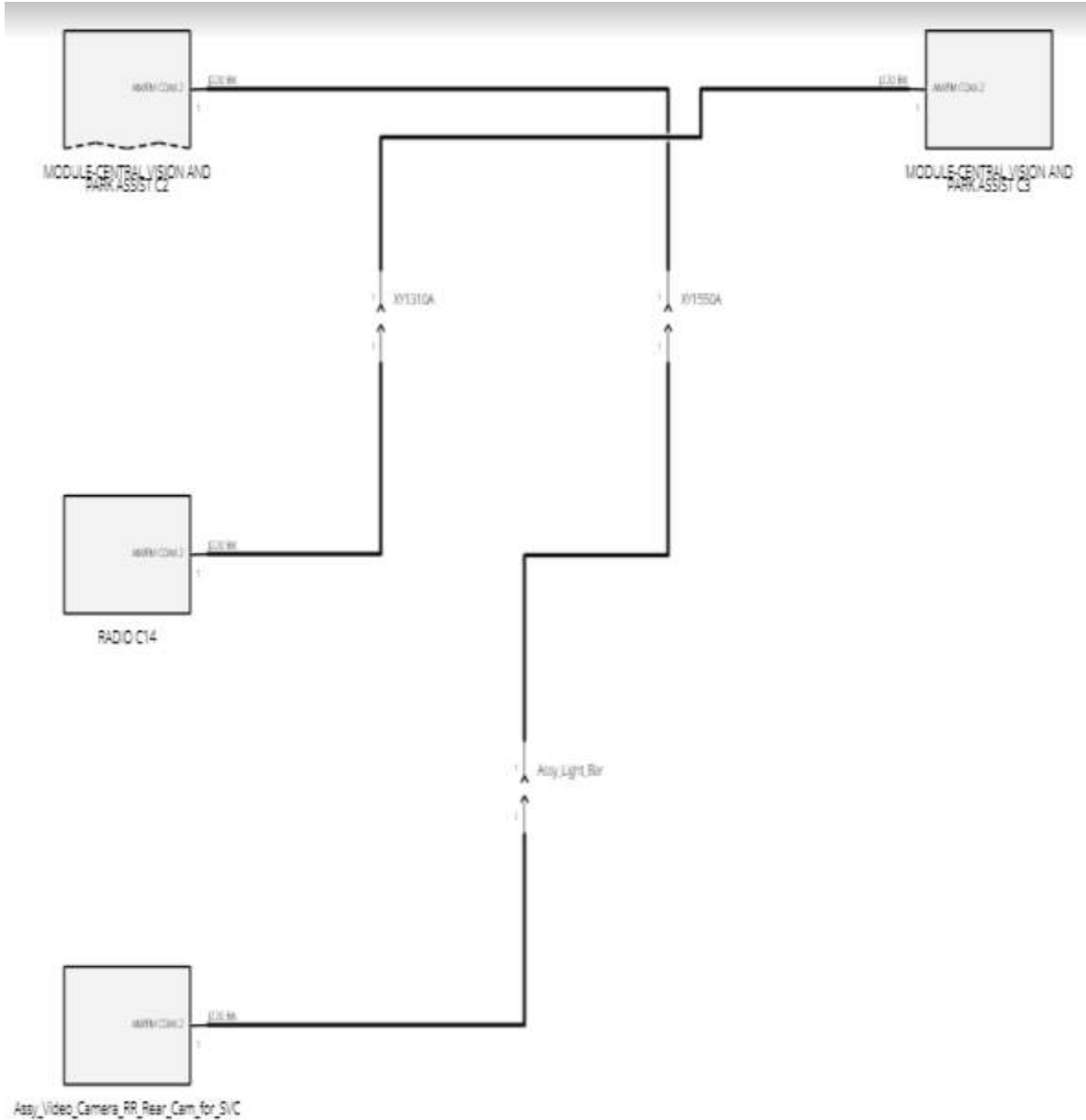


Fig 3

This document does not authorize warranty repairs. This communication documents a record of past experiences. STAR Online does not provide any conclusions about what is wrong with the vehicle. Rather, it captures all previous cases known that appear to be similar or related to the vehicle symptom / condition. You are the expert, and you are responsible for deciding on the appropriate course of action.

Contact STAR Center, or your Technical Assistance Center Via TechCONNECT or eCONTACT ticket if no solution is found