



TECHNICAL SERVICE BULLETIN

Classification: AT21-004A	Reference: NTB21-086A	Date: October 7, 2022
------------------------------	--------------------------	--------------------------


A/T WARNING LIGHT IS ON WITHOUT PAST OR CURRENT DTC STORED

This bulletin has been amended. See **AMENDMENT HISTORY** on the last page.
Please discard previous versions of this bulletin.

- APPLIED VEHICLES:** 2020-2021 Frontier (D40)
2020-2021 Titan/Titan XD (A61)
- APPLIED VINS:** 2020 Frontier – All
2021 Frontier – Built before 1N6ED0(*) (*) (*) MN 717985
2020 Titan/Titan XD – All
2021 Titan/Titan XD – Built before 1N6AA1(*) (*) (*) MN 526557

APPLIED TRANSMISSION: 9 Speed (GE9R01A)

SERVICE INFORMATION

If the Automatic Transmission (A/T) warning light  comes ON, and no TCM related DTCs are stored as PAST or CURRENT:

- Please check Service COMM or Dealer Business Systems (DBS) National Service History to confirm if campaign R22B1 or R22A9 has been applied.
1. Has campaign R22B1 or R22A9 and the drive cycle (after performing the campaign) on page 2 of this bulletin already been completed?

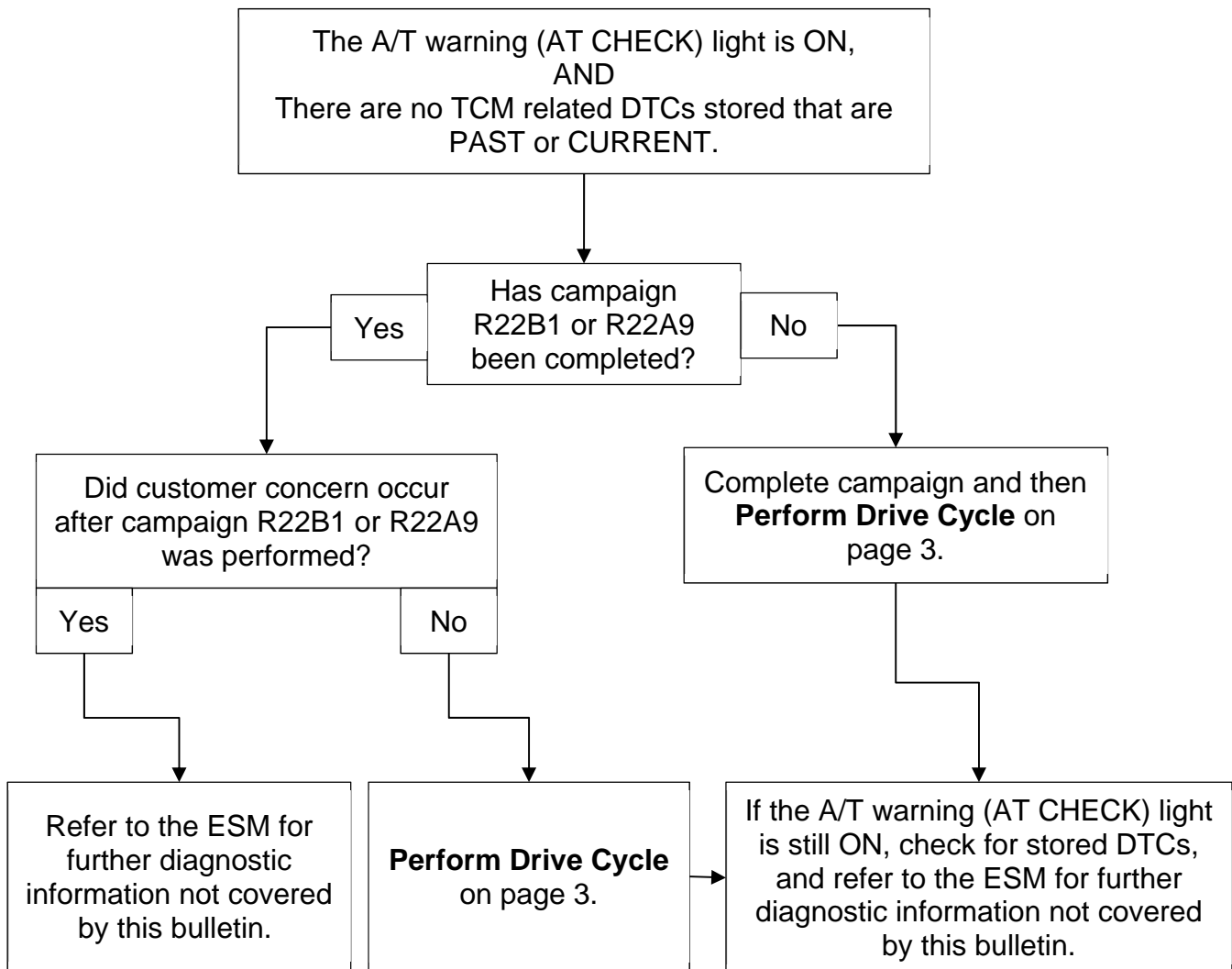
No:

 - a. Complete the related campaign bulletin.
 - b. Perform the drive cycle on page 3, and then proceed to step 2.

Yes: Proceed to step 2.
 2. If the A/T warning (AT CHECK) light is ON, check for stored DTCs, and refer to the Electronic Service Manual (ESM) for further diagnostic information not covered by this bulletin.

Nissan Bulletins are intended for use by qualified technicians, not 'do-it-yourselfers'. Qualified technicians are properly trained individuals who have the equipment, tools, safety instruction, and know-how to do a job properly and safely. **NOTE:** If you believe that a described condition may apply to a particular vehicle, DO NOT assume that it does. See your Nissan dealer to determine if this applies to your vehicle.

Bulletin Overview



SERVICE PROCEDURE

Perform Drive Cycle

Test drive the vehicle, using manual mode, and drive in each gear (1st - 9th) for a minimum of 10 seconds each, while maintaining a vehicle speed above 7 mph (10 kph) and accelerator pedal position of at least 2/8ths, or greater.

HINT: Higher speeds may be required to allow 9th gear to be selected.

- If the A/T warning light comes ON and a DTC is stored, end the test drive and refer to the ESM for further diagnostic information not covered under this **SERVICE PROCEDURE**.
- If the A/T warning light does not come ON and no DTCs are stored, the **SERVICE PROCEDURE** is complete.

CLAIMS INFORMATION

Submit a Primary Part (PP) type line claim using the following claims coding:

DESCRIPTION	PFP	OP CODE	SYM	DIA	FRT
Perform Transmission Shift Drive Cycle	(1)	JX96AA	ZE	32	0.2

- (1) Reference the electronic parts catalog and use the Valve Control Assy (31705-*****) as the Primary Failed Part (PFP).

AMENDMENT HISTORY

PUBLISHED DATE	REFERENCE	DESCRIPTION
September 14, 2021	NTB21-086	Original bulletin published
October 7, 2022	NTB21-086A	Changes made throughout