



Service Bulletin

Bulletin No.: 06-00-89-031H

Date: September, 2022

INFORMATION

Subject: OEM and Remanufactured Engine and Automatic Transmission/Transaxle Identification

Models: 2003–2023 GM Passenger Cars and Trucks

Attention: This bulletin also applies to any of the above models that may be Export from North America vehicles.

This bulletin has been revised to add the 2023 Model Year and an Important statement.
Please discard Corporate Bulletin Number 06-00-89-031G.

Important: Service agents must comply with all International, Federal, State, Provincial, and/or Local laws applicable to the activities it performs under this bulletin, including but not limited to handling, deploying, preparing, classifying, packaging, marking, labeling, and shipping dangerous goods. In the event of a conflict between the procedures set forth in this bulletin and the laws that apply to your dealership, you must follow those applicable laws.

The purpose of this bulletin is to show dealers and retailers how to find engine and automatic transmission/transaxle identification information for OEM built service engines, manufactured for GM service engines, and re-manufactured for GM service engines.

OEM Identification Information

The engine bar code tag is usually in one of several places. The bar code tag could be on a rocker arm cover, the ends of a cylinder head or on the oil pan or the oil rail area of the engine. The information required from the tag is the 3 position alpha-numeric code which

identifies the model of the engine and the series of numbers at the bottom of the tag. The number of digits will vary depending on the engine application. All the numbers will be required to process an engine request. If this is the original engine in the vehicle, the engine information is available in IVH (Investigate Vehicle History). Choose the Vehicle Component selection, the 3 position alpha-numeric code is the Part/Num Broadcast section and the Traceability section is the bar code information that is required. It may be easier to use IVH (Investigate Vehicle History) to obtain the necessary information; however, it is only valid for the original engine.

All original equipment identification information is also available in SI. To easily find the information for the vehicle line you are working on, select the vehicle type and type the word "identification" in the search box. This search (described below) will provide the list of the different assemblies to choose from.

GM Service and Parts Operations



2006 Chevrolet Cobalt

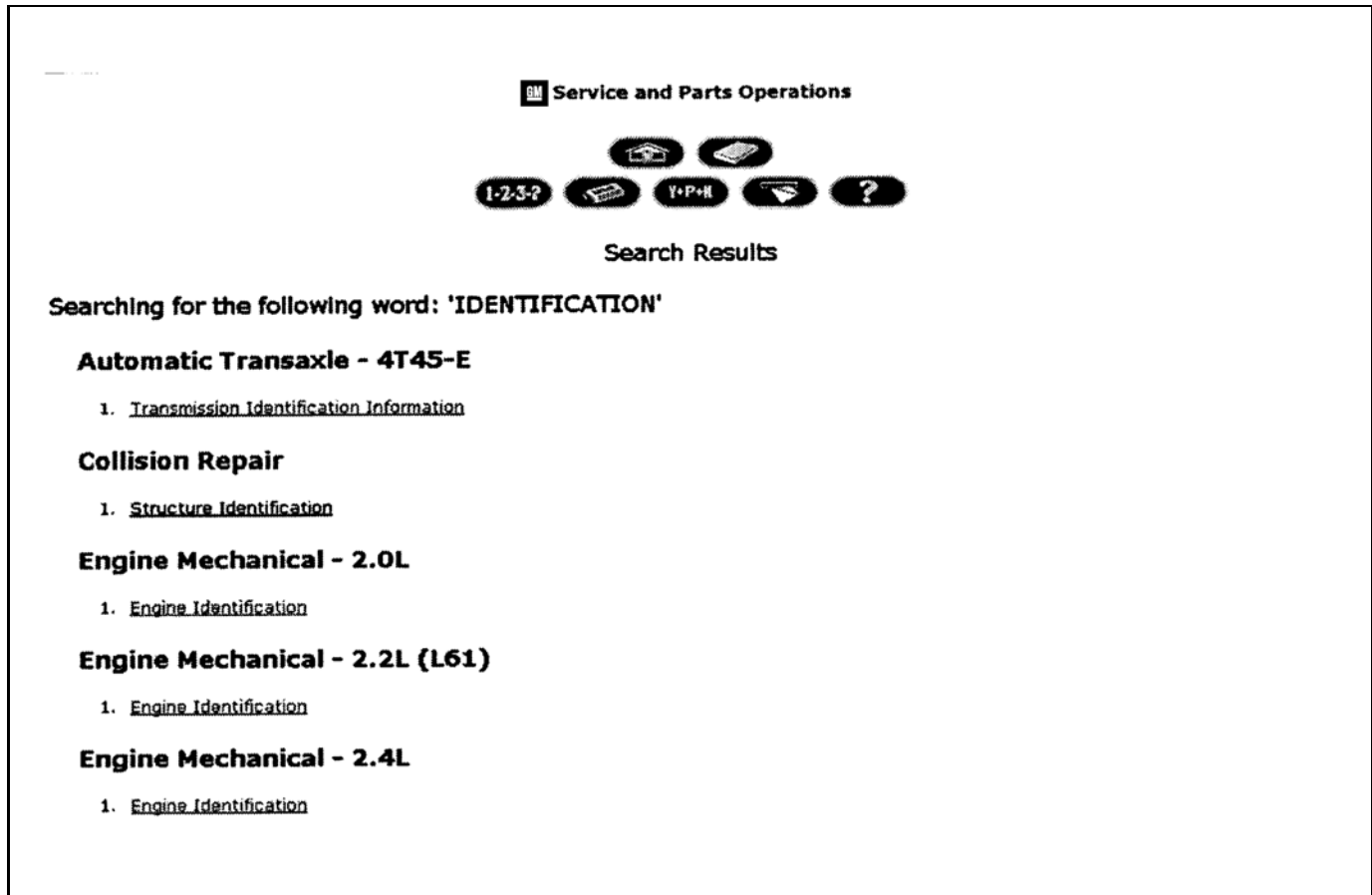
Match All or Any of these words:

[Keyword List](#) [Symptom List](#) [DTC List](#)


Select a category:

- > [Bulletins By Category](#)
- > [View All Bulletins](#)
- > [Campaigns](#)
- > [Preliminary Information](#)
- > [Preface](#)
- > [General Information](#)
- > [HVAC](#)
- > [Steering](#)
- > [Suspension](#)
- > [Driveline/Axle](#)
- > [Brakes](#)
- > [Engine](#)
- > [Transmission/Transaxle](#)

1. Type in the word "identification" in the search dialog box.



GM Service and Parts Operations



Search Results

Searching for the following word: 'IDENTIFICATION'

Automatic Transaxle - 4T45-E

1. [Transmission Identification Information](#)

Collision Repair

1. [Structure Identification](#)

Engine Mechanical - 2.0L

1. [Engine Identification](#)

Engine Mechanical - 2.2L (L61)

1. [Engine Identification](#)

Engine Mechanical - 2.4L

1. [Engine Identification](#)

1832842

2. The different engine and transmission assemblies available for that vehicle will be displayed. Click the link for the desired engine and/or transmission identification information.

Transmission Labeling

All remanufactured transmission labels are in the same location as the original equipment labels and location can be found by using the method above.

Manufactured Engine ID Tags



4084166

The tag is made of metal and is approximately 2 in x 1-11/16 in (5.1 cm x 4.3 cm). It is installed on all manufactured for GM service engines and new engines assembled by non-GM suppliers.

This is a list of engines that are made for GM to the original manufacturer specifications:

- 7.4L
- 8.0L
- 4.6L
- 2.0L (LNF)

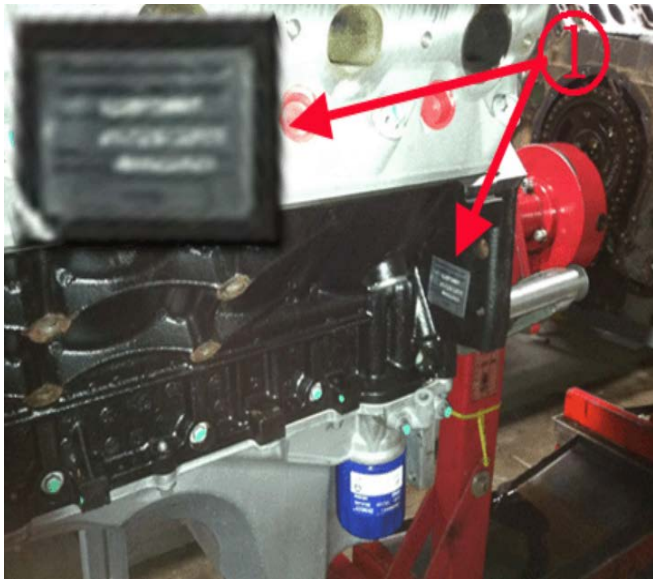
Remanufactured Engine ID Tags



4058686

The tag is made of metal and is approximately 2 in x 1-11/16 in (5.1 cm x 4.3 cm). It is installed on all remanufactured for GM service engines and new engines assembled by non-GM suppliers.

Remanufactured Engine ID Tag Locations



4058681

All remanufactured engines have a label (1) on the right or left side of the block. A list is provided below to indicate which side of the block the label may be found for each engine application.

Right Side of Block

- 2.4L (Quad 4)
- 2.5L
- 2.8L/3.5L/3.7L/4.2L (I4/I5/I6)
- 2.8L/3.0L/3.6L (HFV6)
- 3.1L/3.4L/3.5L/3.9L (HV V6)
- 3.8L
- 4.3L
- 4.6L (PV8)
- 6.0L/7.4L/8.1L (Big Block)
- 3.3L/3.8L/4.3L/307cid (LG7/L27/L67/LN3/L35/LF6/LB1/LV2)
- 2.4L (LD9) Right Side Cam Carrier
- 7.4L (L19/L29/L21/LP4/LE8) Right Side of Block Under Cylinder Head

Left Side of Block

- 2.2L/2.4L (Ecotec)
- 4.8L/5.3L/6.0L/6.2L (Gen III/Gen IV)
- 6.6L Dmax Diesel
- 4.0L/4.6L (L47/L37/LD8) Front of Cam Carrier Cover
- 4.3L/5.7L (L99/LT1/LT4) Left Side of Block
- 2.3L (LD2/LG0/L40) Left Side of Block

If piston replacement is required, be sure to measure the cylinder before ordering a piston. The majority of these engines have oversized cylinders and oversized pistons ring packs are not available for service. Refer to SI for the engine you are working on.

If crankshaft bearing replacement is required, be sure to measure a crankshaft before ordering bearings. If the crankshaft has been turned, it will require replacement with all new standard size bearings and crankshaft. Refer to SI for the engine you are working on.

When determining if a repair should be performed on a remanufactured for GM engine, contact the Technical Assistance Center (TAC) to discuss parts availability.