



TECHNICAL SERVICE BULLETIN

Classification: FA21-001A	Reference: NTB21-013A	Date: September 27, 2022
------------------------------	--------------------------	-----------------------------

PREVENT FRONT AXLE THREAD DAMAGE DURING NUT REMOVAL

This bulletin has been amended. See **AMENDMENT HISTORY** on the last page.
Please discard previous versions of this bulletin.

APPLIED VEHICLES: 2019-2023 Altima (L34)
2018-2023 LEAF (ZE1)
2022-2023 Pathfinder (R53)
2021-2023 Rogue (T33)
2020-2022 Sentra (B18)

SERVICE INFORMATION

If a front axle nut needs to be removed from an **APPLIED VEHICLE** for any reason, the staking of the nut into the axle keyway must first be removed.

In the ESM, the essential tool required to remove the nut staking is called out as a “Cape Chisel” (part number # J-52982*), and it must be used to prevent thread damage to the axle. See Figure 1 and Figure 2 on page 2.

- The Cape Chisel arrived at dealers in December of 2020.
- Damaged threads, due to improper removal of the stake placed in the nut, will not be covered by warranty.

For information on using the Cape Chisel, refer to the ESM:

- **TRANSMISSION & DRIVELINE > FRONT AXLE > REMOVAL AND INSTALLATION > FRONT DRIVE SHAFT > LH/RH.**

*New tool part number: NI-52982. Additional tools may be purchased from Tech•Mate:
www.techmatetools.com or 1-833-397-3493.

Nissan Bulletins are intended for use by qualified technicians, not 'do-it-yourselfers'. Qualified technicians are properly trained individuals who have the equipment, tools, safety instruction, and know-how to do a job properly and safely. **NOTE:** If you believe that a described condition may apply to a particular vehicle, DO NOT assume that it does. See your Nissan dealer to determine if this applies to your vehicle.

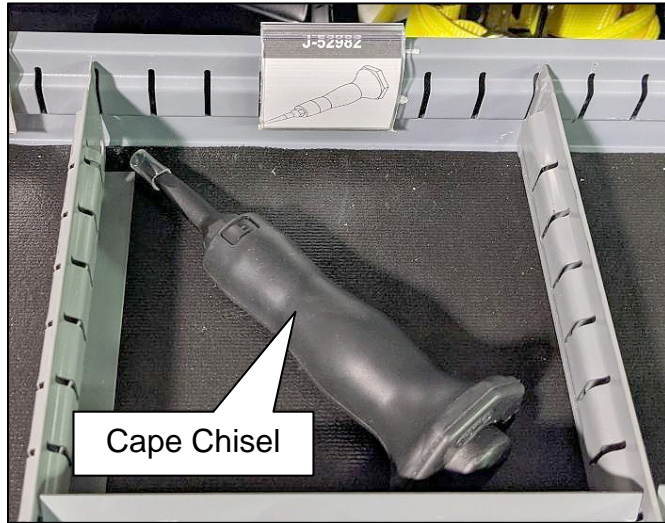


Figure 1

Example of threads damaged by improper axle nut removal

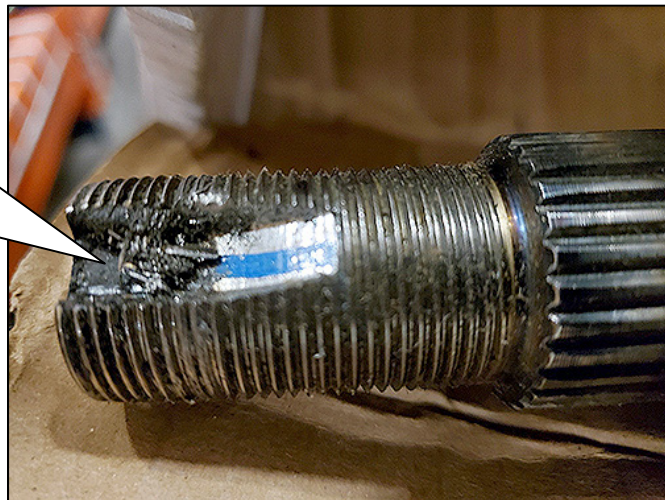


Figure 2

AMENDMENT HISTORY

PUBLISHED DATE	REFERENCE	DESCRIPTION
February 26, 2021	NTB21-013	Original bulletin published
September 27, 2022	NTB21-013A	APPLIED VEHICLES revised, and Tech•Mate contact information and new part number for cape chisel added