



INFINITI

# TECHNICAL SERVICE BULLETIN

Classification: BT22-018	Reference: ITB22-034	Date: September 26, 2022
-----------------------------	-------------------------	-----------------------------

## POWER BACK DOOR INTERMITTENT OPERATION AND DTCS STORED IN AUTO BACK DOOR ECU

APPLIED VEHICLES: 2022 QX60 (L51)

### SERVICE INFORMATION

If you confirm the power back door does not operate or has intermittent operation, and any of the following DTCs are stored in the **AUTO BACK DOOR ECU**:

- B2422-78 (Back Door Position Abnormal)
- B2422-79 (Back Door Position Abnormal)
- B2426-11 (Spindle Sensor LH)
- B2426-13 (Spindle Sensor LH)
- B2426-25 (Spindle Sensor LH)
- B2427-11 (Spindle Sensor RH)
- B2427-13 (Spindle Sensor RH)
- B2427-25 (Spindle Sensor RH)
- B242A-13 (Closure Motor)
- B2436-11 (Spindle Motor LH)
- B2436-13 (Spindle Motor LH)
- B2436-19 (Spindle Motor LH)
- B2437-11 (Spindle Motor RH)
- B2437-13 (Spindle Motor RH)
- B2437-19 (Spindle Motor RH)

Refer to the information provided in this bulletin to determine if the back door stays' (spindles') wire harness connector (#4 and #10 in Figure 1) has a spread terminal.

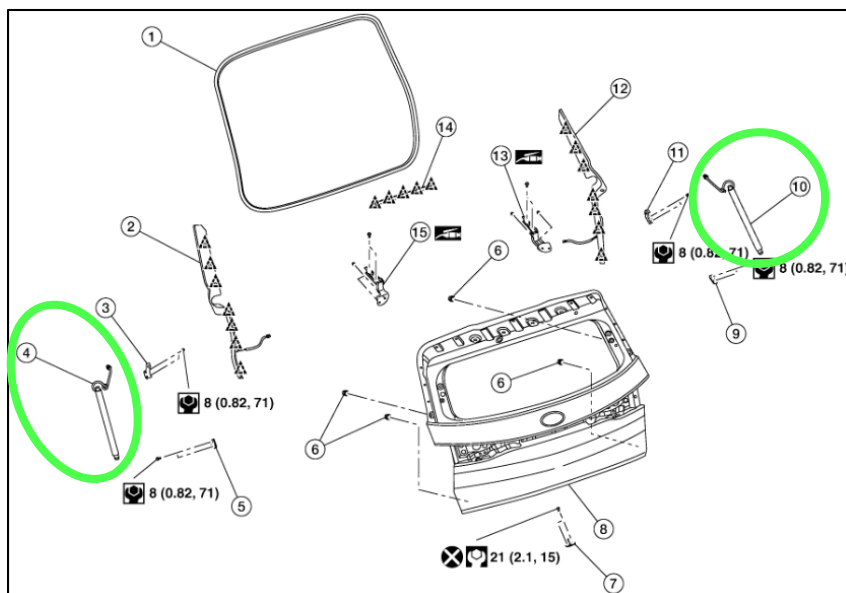


Figure 1

Bulletins are intended for use by qualified technicians, not 'do-it-yourselfers'. Qualified technicians are properly trained individuals who have the equipment, tools, safety instruction, and know-how to do a job properly and safely. **NOTE:** If you believe that a described condition may apply to a particular vehicle, DO NOT assume that it does. See your Infiniti retailer to determine if this applies to your vehicle.

## REQUIRED SPECIAL TOOL

- Special tool spread terminal gauge J-48817-3 (Figure 2).
  - New tool number NI-48817-3.
- Additional tools may be purchased from Tech•Mate: [www.techmatetools.com](http://www.techmatetools.com) or 1-833-397-3493.

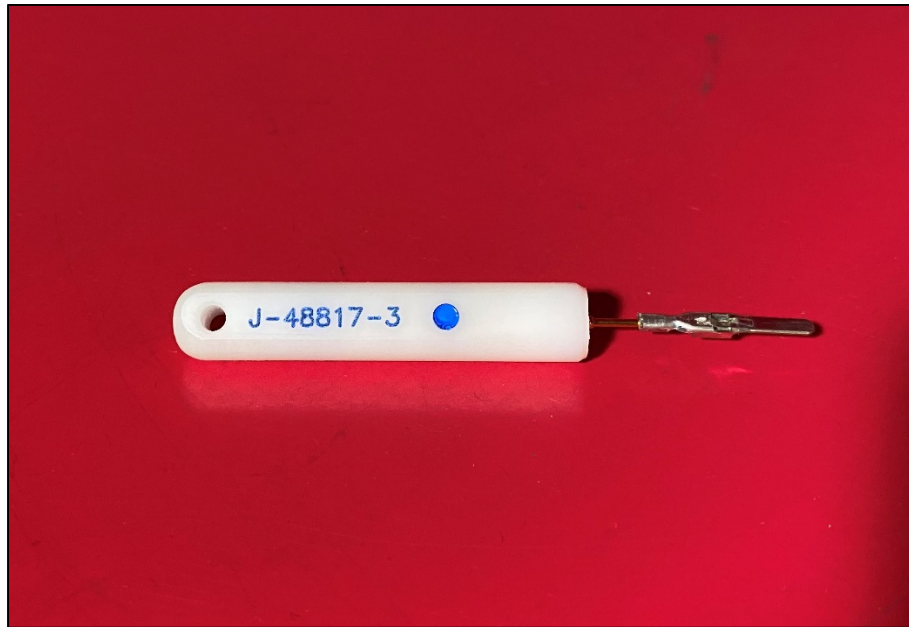


Figure 2

## CHECK THE POWER BACK DOOR SPINDLE PULSE RATE

1. Confirm the power back door spindle pulse rate.

**NOTE:** For information on how to check the power back door spindle pulse rate, refer to the ESM: **BODY EXTERIOR, DOORS, ROOF & VEHICLE SECURITY > DOOR & LOCK > SYSTEM DESCRIPTION > DIAGNOSIS SYSTEM (AUTOMATIC BACK DOOR CONTROL UNIT)> CONSULT Function (AUTOMATIC BACK DOOR CONTROL UNIT)**

- If the pulse rate for the **Spindle sensor LH** and **Spindle sensor RH** are different, proceed to step 2 on page 4 to check for spread terminal.
- If the pulse rate for the **Spindle sensor LH** and **Spindle sensor RH** are the same, this bulletin does not apply. Refer to the ESM for further diagnosis.

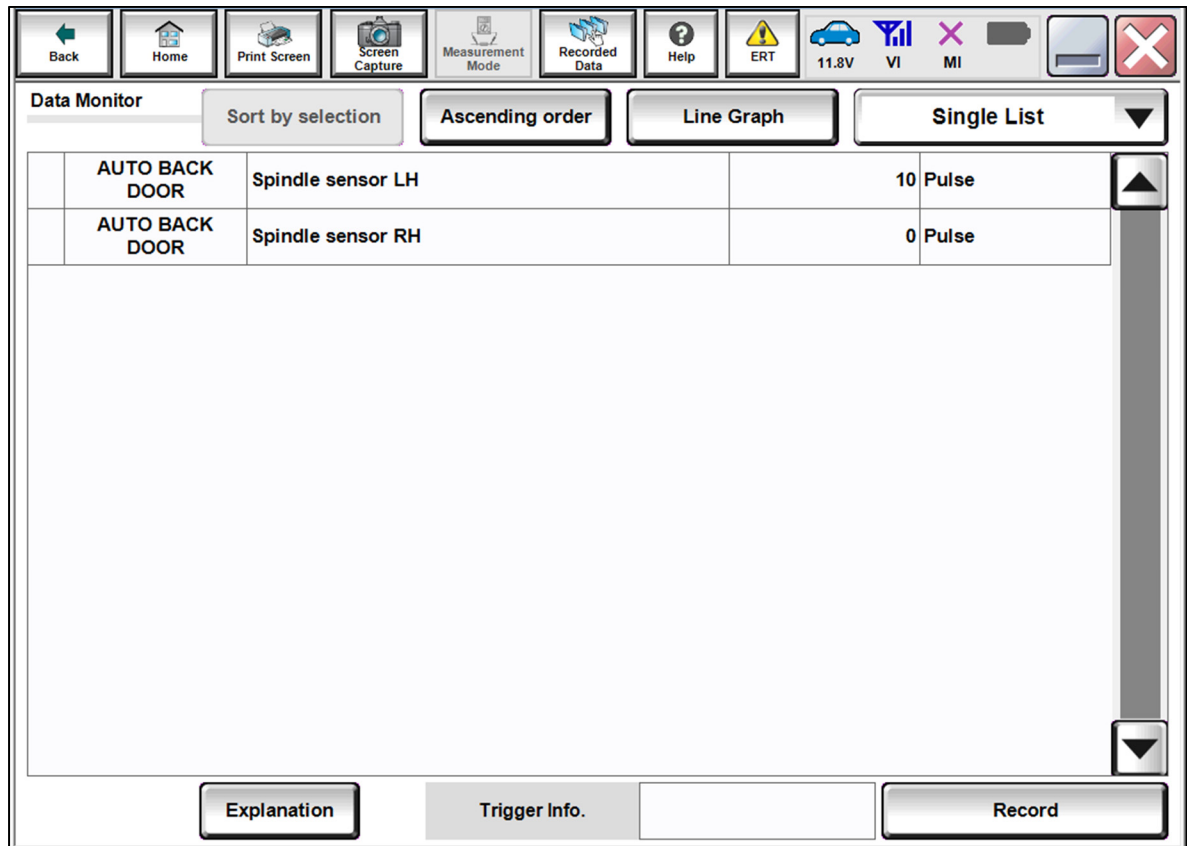


Figure 3

## CHECK THE POWER BACK DOOR SPINDLES FOR A SPREAD TERMINAL

### NOTICE

To avoid damage to the headliner or the interior trim, handle the headliner and interior trim carefully, and with clean hands, when removing the back door stay or wire harness connector. If not handled carefully with clean hands, damage and/or stains to these parts may occur. Use protective covers as needed.

2. Insert the spread terminal gauge into each terminal of the wire harness connector.
  - If the spread terminal gauge compresses without entering the female terminal (Figure 4), then that terminal is OK. Check the remaining terminals in the wire harness connector.
    - If no spread terminals are found in the wire harness connector, refer to the ESM for further diagnosis.
  - If the spread terminal gauge enters the female terminal without compressing (Figure 5), that terminal is spread and is NG.
    - If a spread terminal is found, replace the spread terminal with the crimped terminal wire from **PARTS INFORMATION**. Refer to ITB14-020 for wire harness repair information.



Figure 4



Figure 5

## VERIFY THE POWER BACK DOOR SPINDLE PULSE RATE

- Verify the power back door spindle pulse rate is now the same.

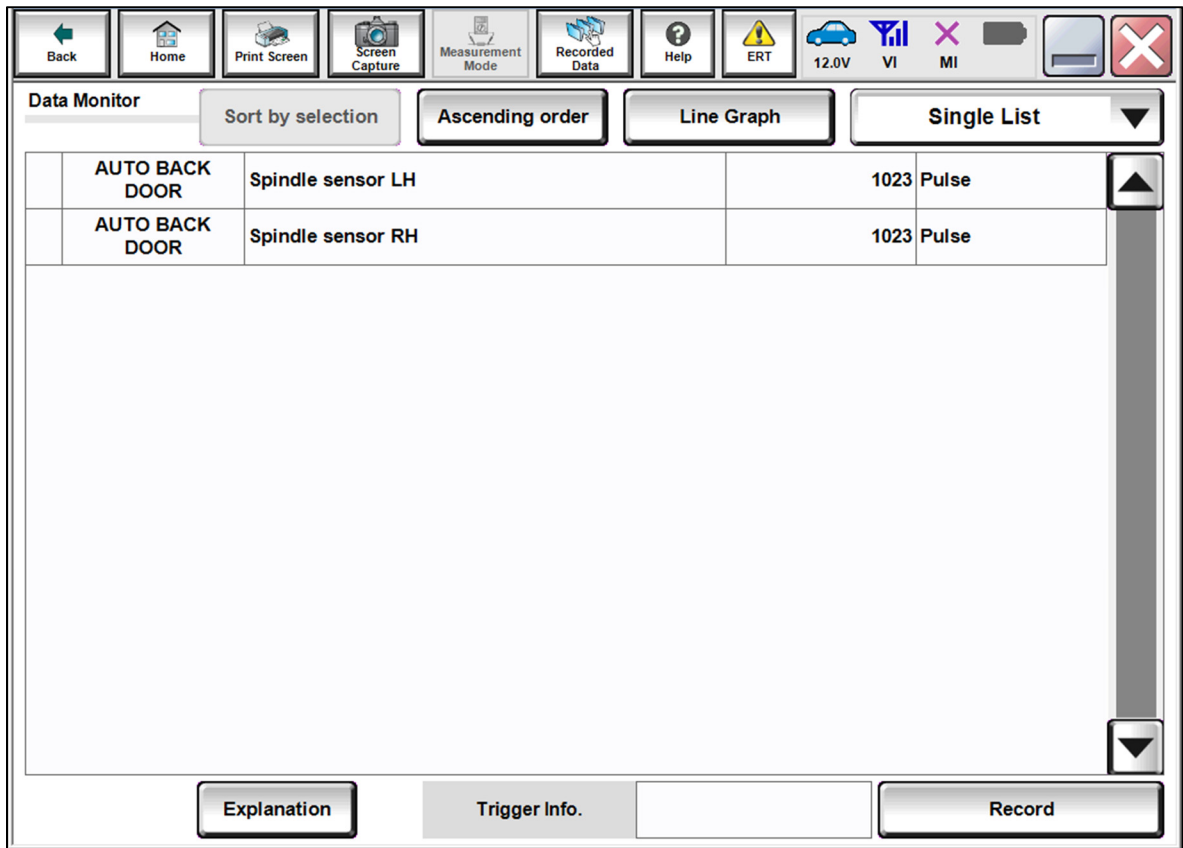


Figure 6

## PARTS INFORMATION

DESCRIPTION	PART NUMBER	QUANTITY
CRIMPED TERMINAL WIRE	24008-9DJ3C	As Needed

## AMENDMENT HISTORY

PUBLISHED DATE	REFERENCE	DESCRIPTION
September 26, 2022	ITB22-034	Original bulletin published