

WMP2 - Reworking Charging Electronics (Porsche Mobile Charger) (Workshop Campaign)

Revision: This bulletin replaces bulletin Group 0 197/21 WMP2, dated September 1, 2022.

Model Year: **As of 2017 up to 2022**

Vehicle Type: **Cayenne E-Hybrid (9YA/9YB)/Cayenne Turbo S E-Hybrid (9YA/9YB)
Panamera 4 E-Hybrid (971)/Panamera 4S E-Hybrid (971)/Panamera Turbo S E-Hybrid (971)
Taycan (Y1A/Y1B)/Taycan 4S (Y1A/Y1B)/Taycan GTS (Y1A/ Y1C)/Taycan Turbo
(Y1A/Y1B)/Taycan Turbo S (Y1A/Y1B)**

- Concerns: **Charging hardware variants:**
- **Porsche Mobile Charger with NEMA industrial plug**
 - **Porsche Mobile Charger Plus with NEMA industrial plug**
 - **Porsche Mobile Charger Connect with NEMA industrial plug**

Information: **Campaign Summary**

Actions required:

1. Retrofit warning sticker on the charging electronics and attach photo of mobile charger to job line
2. Limit charging current at the charging electronics initially to 50% in conjunction with the industrial supply cable
3. Give an Owner's Manual Supplement to the customer

Note: This Workshop Campaign is focused on the industrial supply cable (208-250V). The charging electronics, the Mobile Charger Connect, for example, retains the maximum charging current separately for domestic (120V) and industrial supply cables. Therefore, this workshop campaign must be performed with the industrial supply cable connected to the charging electronics.

Select the relevant remedial measure depending on the charging electronics installed in the respective vehicle:

- Porsche Mobile Charger, continue with: ⇒ *Technical Information 'Setting charging current limiting - charging electronics (Porsche Mobile Charger)'*
- Porsche Mobile Charger **Plus**, continue with: ⇒ *Technical Information 'Setting charging current limiting - charging electronics (Porsche Mobile Charger Plus)'*
- Porsche Mobile Charger **Connect**, continue with: ⇒ *Technical Information 'Setting charging current limiting - charging electronics (Porsche Mobile Charger Connect)'*

General NEMA (250V) Receptacle Home Installation Precautions

Porsche recommends home owners only install industrial quality electrical NEMA receptacles and have the installation performed by qualified electricians in accordance with the National Electrical Code or applicable local equivalents.

For example, the following receptacles are recommended for their industrial quality and ability to handle high current with minimal electrical resistance for long periods of time:

- Hubbell HBL9450A = NEMA 14-50 Receptacle (4-wire)
- Hubbell HBL9367 = NEMA 6-50 Receptacle (3-wire)

A 50-amp branch circuit should use minimum 6 AWG, 90°C-rated copper wire for conductors supplying level 2 Porsche charging hardware plugged with a NEMA 14-50 or 6-50 supply cable. Receptacle terminal screws must be tightened to manufacturer specifications. The use of ferrules on the supply conductor wiring is recommended to further safeguard the circuit connection at the receptacle.

Caution

If the electrical receptacles/outlets are not of sufficient quality, higher temperatures can occur in the receptacle when charging the vehicle using the supplied charging hardware (e.g. Porsche Mobile Charger). This can result in thermal damage to the receptacle and associated wiring. Low quality NEMA receptacle use or improper installation are not an indication of a defect in the vehicle or Porsche charging hardware.

General Precautions on (125V) Supply Cable Use

The “domestic” (125V) supply cable is provided for emergency use only, and **should not be used by customers for daily home charging**. Please discuss installation and use of a suitable 250V circuit with all customers.



Information

Caution

The surface of the charger and associated equipment can become very hot under normal use. This is normal and not an indication of a defect in the charger. Observe the operating instructions provided with the charger, particularly the warnings and safety instructions.

When used, it is recommended to limit 125V charging to a maximum of approximately 12 hours. Charge only to a minimum needed get to a nearest High-Power Charger (HPC) or DC Charger for recharging.

Affected
Vehicles:

Only vehicles assigned to the campaign (see also PCSS Vehicle Information).

Overview of
Charger:



Porsche mobile charger



Porsche Mobile Charger Plus



Porsche Mobile Charger Connect

Required parts and materials

Parts Info:

Required parts:

Part No.	Designation – Location	Number
V04015001FJ	⇒ Warning sign – Porsche Mobile Charger	1 ea.
or		
V04015001FK	⇒ Warning sign – Porsche Mobile Charger Plus	1 ea.
or		
V04015001FL	⇒ Warning sign – Porsche Mobile Charger Connect	1 ea.

Additional parts required

PNA01200314	⇒ Owner's Manual Supplement	1 ea.
-------------	-----------------------------	-------

**Information****Ordering the required Owner's Manual Supplement**

Please **order** the **number of Owner's Manual Supplements you require in accordance with your current needs** via PPL. The Owner's Manual Supplement is priced at **\$0.01**.

If the Owner's Manual Supplements cannot be ordered with free delivery, please refer to the additional information provided for warranty processing.

Materials:

Required materials (usually already available at the Porsche dealer):

Part No.	Designation	Number
D 00940104	⇒ Cleaning solution or alternative (commercially available)	250 ml/ 8.45 fl oz container (approx. 25 ml/ 0.85 fl oz required per vehicle)*

* For warranty processing, the cleaning solution can optionally be invoiced as an **additional part** in the warranty claim under the part number or under part number **WMP20000002** with the **"expendable items"** designation.

Setting charging current limiting - charging electronics (Porsche Mobile Charger)

- Work Procedure: 1 Remove the charging electronics (Porsche Mobile Charger) from the vehicle.
- 2 Connect the industrial supply cable to the charging electronics (Porsche Mobile Charger) and plug it into an industrial receptacle.
- 3 Press the On/Off button on the charging electronics (Porsche Mobile Charger) for at least 2 seconds.
- 4 Set the charging current to 50% by pressing the On/Off button.



Information

When the charging electronics are switched on, the charging current can be changed between 100% and 50% by pressing the On/Off button.

The set maximum charging current value 50% is displayed to the left of the On/Off button.

- 5 Switch off charging electronics (Porsche Mobile Charger) and disconnect the power plug. Then continue with: ⇒ *Technical Information 'Retrofitting warning sticker - charging electronics (Porsche Mobile Charger/Porsche Mobile Charger Plus)'*
- 6 Attach a photo of the Porsche Mobile Charger with the warning sticker to the job line.

Setting charging current limiting - charging electronics (Porsche Mobile Charger Plus)

- Work Procedure: 1 Remove the charging electronics (Porsche Mobile Charger Plus) from the vehicle.
- 2 Connect the industrial supply cable to the charging electronics (Porsche Mobile Charger Plus) and plug it into an industrial receptacle.
- 3 Press the On/Off button on the charging electronics (Porsche Mobile Charger Plus) for at least 3 seconds.
- 4 Set the charging current to 50% by pressing the On/Off button.



Information

When the charging electronics are switched on, the charging current can be changed between 100% and 50% by pressing the On/Off button.

The set maximum charging current value 50% is displayed to the left of the On/Off button.

- 5 Switch off charging electronics (Porsche Mobile Charger Plus) and disconnect the power plug. Then continue with: ⇒ *Technical Information 'Retrofitting warning sticker - charging electronics (Porsche Mobile Charger/Porsche Mobile Charger Plus)'*
- 6 Attach a photo of the Porsche Mobile Charger Plus with the warning sticker to the job line.

Setting charging current limiting - charging electronics (Porsche Mobile Charger Connect)

- Work Procedure:
- 1 Remove the charging electronics (Porsche Mobile Charger Connect) from the vehicle.
 - 2 Connect the industrial supply cable to the charging electronics (Porsche Mobile Charger Connect) and plug it into an industrial receptacle.
 - 3 Switch charging electronics (Porsche Mobile Charger Connect) on and off using the On/Off button.
 - 4 Select the 'Settings' icon in the menu bar to open the main menu .
 - 5 Select the 'Charging current' function in the main menu and set the maximum charging current value to 50% of the maximum current allowed by the supply cable using Plus and/or Minus. For example, if the customer uses the standard equipment NEMA14-50 supply cable, the maximum current is 40A, so the corresponding 50% amperage setting is 20A.
 - 6 Switch off charging electronics (Porsche Mobile Charger Connect) and disconnect the power plug. Then continue with: ⇒ *Technical Information 'Retrofitting warning sticker - charging electronics (Porsche Mobile Charger Connect)'*
 - 7 Attach a photo of the Porsche Mobile Charger Connect with the warning sticker to the job line.

Retrofitting warning sticker - charging electronics (Porsche Mobile Charger/Porsche Mobile Charger Plus)



Information

The procedure for affixing the warning sticker is presented on a Porsche Mobile Charger Plus as an example.

The procedure for the Porsche Mobile Charger is identical.

Work
Procedure:

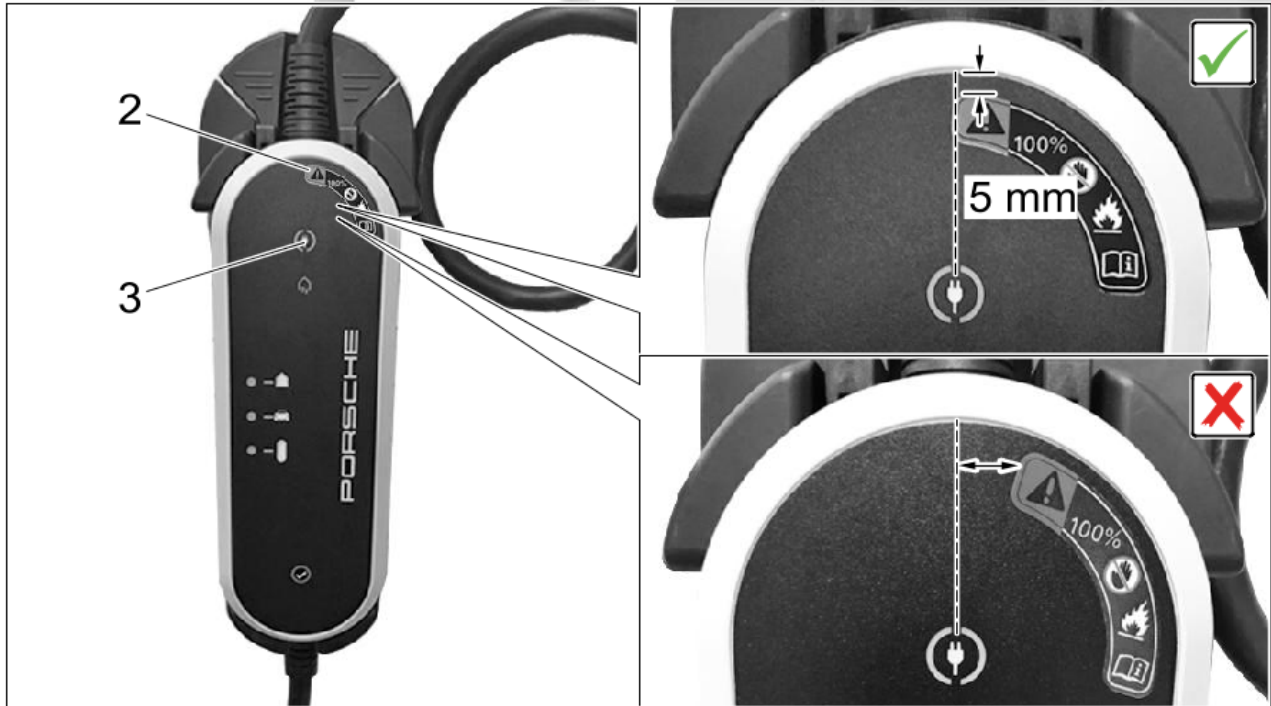
Retrofit warning sticker.

- 1 Clean the bonding area on the surface ⇒ *Bonding area -1-* using an odor-neutral cleaning agent with material compatibility (e.g. D00940104).



Bonding area

- 2 Dry off the surface with a clean, lint-free cloth or leave it to dry off for a sufficient length of time.



Bonding position

- 3 Position the warning sticker ⇒ *Bonding position -2-* in the bonding area above the On/Off button ⇒ *Bonding position -3-* at the center and press it on firmly with a distance of approx. 5 mm/ 0.2 in from the edge.
- 4 Put charging electronics (Porsche Mobile Charger/Porsche Mobile Charger Plus) and operating system supplement in the vehicle.
- 5 Enter the campaign in the Warranty and Maintenance booklet.

Retrofitting warning sticker - charging electronics (Porsche Mobile Charger Connect)

Work
Procedure:

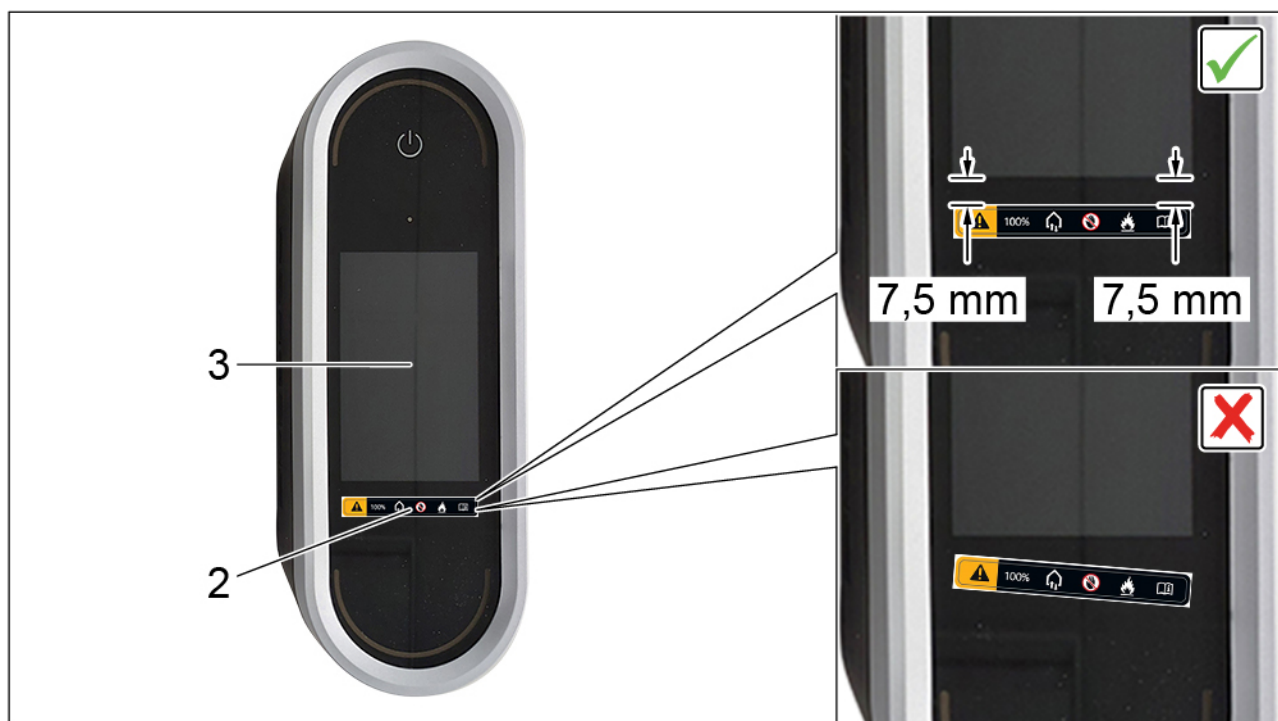
Retrofit warning sticker.

- 1 Clean the bonding area on the surface ⇒ *Bonding area -1-* using an odor-neutral cleaning agent with material compatibility (e.g. D00940104).



Bonding area

- 2 Dry off the surface with a clean, lint-free cloth or leave it to dry off for a sufficient length of time.



Bonding position

- 3 Position the warning sticker ⇒ *Bonding position -2-* in the bonding area under the display in the ⇒ *Bonding position -3-* middle and press it on firmly with a gap of approx. 7.5 mm/ 0.3 in with respect to the display.
- 4 Place charging electronics (Porsche Mobile Charger Connect) and vehicle charging cable in the vehicle.
- 5 Attach a photo of the Porsche Mobile Charger with the warning sticker to the job line.
- 6 Enter the campaign in the Warranty and Maintenance booklet.

Warranty processing

Scope 1: **Reworking charging electronics (Porsche Mobile Charger)**

Working time:	
Reworking charging electronics (Porsche Mobile Charger)	Labor time: 36 TU
Includes:	Setting charging current limiting
	Retrofitting sticker
	Place Owner's Manual Supplement in the vehicle
Parts required:	

V04015001FJ	Warning sign	1 ea.
PNA01200314	Driver's Manual Supplement	1 ea.
WMP20000001	Expendable items ¹	1 ea.

¹ Please invoice the Driver's Manual Supplement PNA01200314 and any associated shipping costs for the supplement under part no. WMP20000001 with the designation "**Expendable items**" with a maximum cost of \$1.26. Please document a copy of the invoice for this in the warranty claim

Required materials (usually already available at the Porsche dealer):

D 00940104	Cleaning solution	0.1 ea.
------------	-------------------	---------

or

WMP20000002 ²	Expendable items	0.1 ea.
--------------------------	------------------	---------

² For warranty processing, enter the Part No. **WMP20000002** with the "**expendable items**" designation as an **additional part** costing \$ 1.25 in the warranty claim.

⇒ **Damage code WMP2 066 000 1**

Scope 2:

Reworking charging electronics (Porsche Mobile Charger Plus)

Working time:

Reworking charging electronics (Porsche Mobile Charger Plus) Labor time: **36 TU**

Includes: Setting charging current limiting
Retrofitting sticker
Place Owner's Manual Supplement in the vehicle

Parts required:

V04015001FK	Warning sign	1 ea.
PNA01200314	Driver's Manual Supplement	1 ea.
WMP20000001	Expendable items ¹	1 ea.

¹ Please invoice the Driver's Manual Supplement PNA01200314 and any associated shipping costs for the supplement under part no. WMP20000001 with the designation "**Expendable items**" with a maximum cost of \$1.26. Please document a copy of the invoice for this in the warranty claim

Required materials (usually already available at the Porsche dealer):

D 00940104	Cleaning solution	0.1 ea.
------------	-------------------	---------

or

WMP20000002² Expendable items 0.1 ea.

² For warranty processing, enter the Part No. **WMP20000002** with the "expendable items" designation as an **additional part** costing \$ 1.25 in the warranty claim.

⇒ **Damage code WMP2 066 000 1**

Scope 3:

Reworking charging electronics (Porsche Mobile Charger Connect)

Working time:

Reworking charging electronics (Porsche Mobile Charger Connect) Labor time: **38 TU**

Includes: Setting charging current limiting
Retrofitting sticker
Place Owner's Manual Supplement in the vehicle

Parts required:

V04015001FL Warning sign 1 ea.

PNA01200314 Driver's Manual Supplement 1 ea.

WMP20000001 Expendable items¹ 1 ea.

¹ Please invoice the Driver's Manual Supplement PNA01200314 and any associated shipping costs for the supplement under part no. WMP20000001 with the designation "**Expendable items**" with a maximum cost of \$1.26. Please document a copy of the invoice for this in the warranty claim

Required materials (usually already available at the Porsche dealer):

D 00940104 Cleaning solution 0.1 ea.

or

WMP20000002² Expendable items 0.1 ea.

² For warranty processing, enter the Part No. **WMP20000002** with the "**expendable items**" designation as an **additional part** costing \$ 1.25 in the warranty claim.

⇒ **Damage code WMP2 066 000 1**

Important Notice: Technical Bulletins issued by Porsche Cars North America, Inc. are intended only for use by professional automotive technicians who have attended Porsche service training courses. They are written to inform those technicians of conditions that may occur on some Porsche vehicles, or to provide information that could assist in the proper servicing of a vehicle. Porsche special tools may be necessary in order to perform certain operations identified in these bulletins. Use of tools and procedures other than those Porsche recommends in these bulletins may be detrimental to the safe operation of your vehicle, and may endanger the people working on it. Properly trained Porsche technicians have the equipment, tools, safety instructions, and know-how to do the job properly and safely. Part numbers listed in these bulletins are for reference only. The work procedures updated electronically in the Porsche PIWIS diagnostic and testing device take precedence and, in the event of a discrepancy, the work procedures in the PIWIS Tester are the ones that must be followed.