



**IMPORTANT SERVICE
INFORMATION FOR:**

- ✓ SERVICE MANAGER
- ✓ SERVICE ADVISOR
- ✓ TECHNICIAN
- ✓ PARTS DEPARTMENT
- ✓ WARRANTY PERSONNEL

BULLETIN NUMBER:
IB16-F-001C

ISSUE DATE:
SEPTEMBER 2022

GROUP:
DRIVELINE/AXLE

LIMITED SLIP DIFFERENTIAL CHATTERING NOISE

AFFECTED VEHICLES

- 2011-2022MY Isuzu N-Series Vehicles
Equipped with 5.2L (4HK1) Diesel Engine and Equipped with Limited Slip Differential (LSD) option code IV0
- 2020- 2023MY Isuzu N-Series Vehicles
Equipped with 6.6L (L8T) Gasoline Engine and Equipped with Limited Slip Differential (LSD) option code IV0
- 2022MY Isuzu N-Series Vehicles
Equipped with 6.0L (PSI) Gasoline Engine and Equipped with Limited Slip Differential (LSD) option code IV0

This bulletin supersedes information bulletin IB16-F-001B. This bulletin is being revised to update Model Years and content. Please disregard previous bulletin IB16-F-001B.

INFORMATION

CONDITION

Some customers with N-series vehicles may notice an audible clicking or chattering noise coming from the rear of the vehicle while making tight turns. This condition may be due to incorrect axle fluid having been used during the last scheduled maintenance or in a previous repair. The condition can also result from delayed or skipped maintenance resulting in degradation of axle fluid.

See Figures 1 and 2 below in this bulletin to identify a limited slip differential or check the vehicle build in IVIS (Isuzu Vehicle Information System) for Option Code IV0.

To resolve this problem, take the following steps/actions:

1. Replace the differential gear oil with a commercially-available gear oil (SAE90 GL-5) and add 20oz of limited slip differential lubricant additive (P/N 8-01052-358-0 (quantity of five (5), 4oz bottles).
2. Road test the vehicle for at least 10 miles by making eight to ten tight left and right turns, such as going around a corner, to ensure the limited slip is activated and to determine if there is no longer any audible clicking or chattering noise coming from the rear of the vehicle during tight turns.
3. If the condition persists, technicians are to call the Technical Assistance Center (TAC) at 1-877-ISUZUCV (1-877-478-9828), Select a language, at Prompt press "3" to speak directly to a TAC Specialist for further assistance.



Figure 1 – Code Location

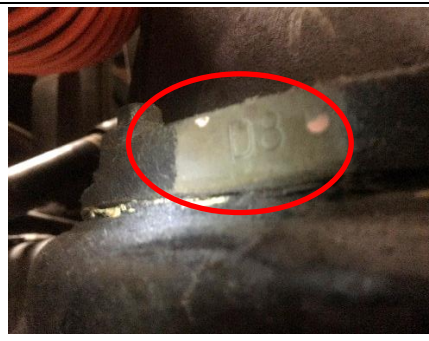


Figure 2 – Example of Stamping

LSD Stamp

Codes

B7

D0

D8

D9

H0

H9