

Hydraulic Reservoir Cork Gasket Installation Instructions

Date: September 27, 2022

Bulletin Name: MISC-TSIB-079

Model: All Refuse Vehicles

Meridian 78, Atlantic 29, Contender 87, Zero Radius 48, AutoReach 49, M/MA 42/44, Rear Loader/Tag Axle 10/12, Split Body Rear Loader 66/67

Model Year: 2010 to present

Units Affected: Those with universal hydraulic reservoir

Purpose:

McNeilus Truck and Manufacturing provides these instructions for installing a hydraulic reservoir cork gasket. The installation of this gasket will repair leaks coming from the gasket between the in-tank filter and the reservoir.

Notice:

- This bulletin should be read and understood in its entirety before performing this procedure.
- All procedures outlined in the bulletin must be performed by skilled service personnel. Refer to the product service manual for descriptions of maintenance procedures.

SAFETY NOTICE

Perform your company's Lockout/Tagout procedure. If your company does not have a Lockout/Tagout procedure, follow OSHA 1910.147 and 1910.146 Confined Space as appropriate.

SAFETY NOTICE

Use appropriate Personal Protective Equipment (PPE) as required by your company.

Tools and Equipment Required:

- Set of wrenches
- Torque wrench
- RTV silicone (Permatex Ultra Grey Rigid High Torque RTV Silicone Gasket Maker)

Parts Required (Order from McNeilus):

Item	Part Number	Description	Qty.
For hydraulic reservoirs with filter PN 1491652 OR PN 1538778 (square filter head)			
1	1591903	Cork Gasket Kit	1
For hydraulic reservoirs with filter PN 1261253 (round filter head)			
1	1658708	Cork Gasket, HYDAC Filter, MRT	1

Procedure:

1. Use the appropriate controls to extend the packer to the extend proximity switch. This will lower the oil level in the reservoir.
2. Shut off the truck and perform your company's Lockout/Tagout procedure. If your company does not have a Lockout/Tagout procedure, follow OSHA 1910.147 and 1910.146 Confined Space as appropriate. Chock the vehicle's wheels and place the vehicle in park with the parking brake engaged.
3. Loosen the clamps that secure the hardline plumbing to the reservoir using a wrench (Figure 1).

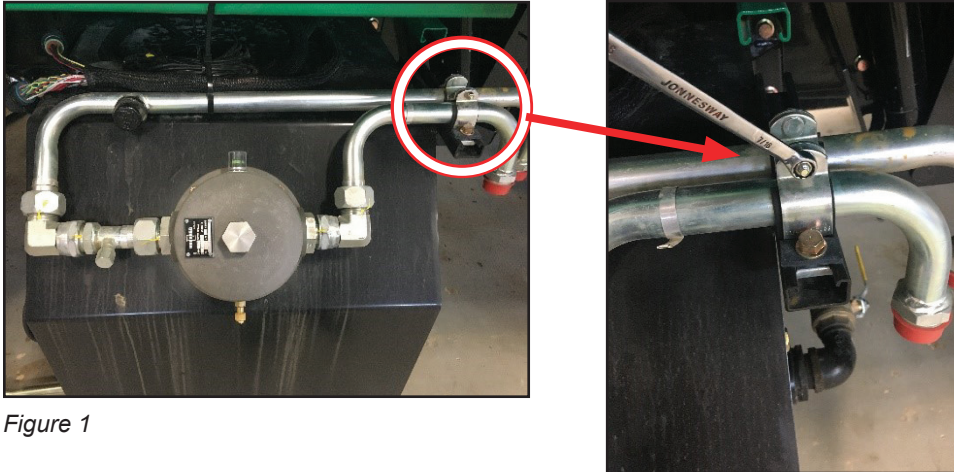


Figure 1

4. Disconnect the hardline plumbing from the filter head using a wrench (Figure 2).



Figure 2

5. Slide the hardlines away from the filter (Figure 3).

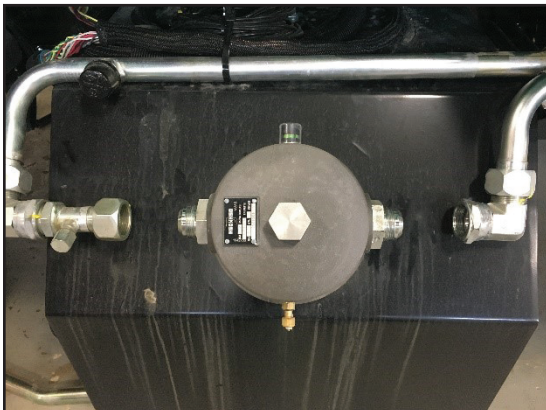


Figure 3

6. Remove the filter head mounting nuts (Figure 4). Retain for reinstallation.



Figure 4

7. Remove the filter head and existing gasket (Figure 5). Retain the filter head for reinstallation; discard the existing gasket. Thoroughly clean the contact surface under the gasket on both the reservoir and the filter head.



Figure 5

8. Apply an 1/8" bead of RTV silicone (Permatex Ultra Grey Rigid High Torque RTV Silicone Gasket Maker) around the base of each mounting bolt (Figure 6).



Figure 6

9. Lay the new cork gasket on a clean, flat surface such as on a worktable. Apply a THIN layer of the RTV silicone to one side of the gasket. A THIN layer should cover the entire side of the gasket. (See Figure 7.)

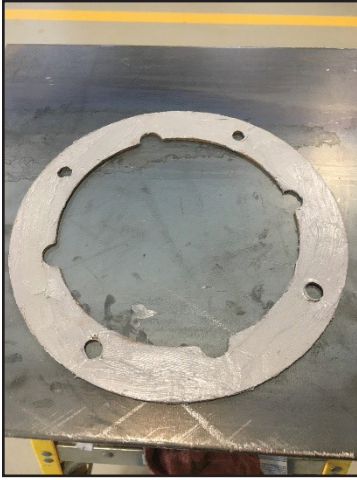


Figure 7

10. Install the cork gasket onto the reservoir at the filter head opening with the RTV silicone between the gasket and the reservoir (Figure 8). Make sure that the gasket lines up properly with the mounting bolts on the reservoir. Gently press down on the gasket to make sure the gasket is laying evenly on the reservoir.



Figure 8

11. Apply another thin layer of RTV silicone to the exposed side of the gasket and an 1/8" bead around the base of each bolt on top of the gasket (Figure 9).



Figure 9

12. Reinstall the existing filter onto the reservoir (Figure 10). Be careful not to smear the RTV silicone.



Figure 10

13. Reinstall the filter mounting nuts (Figure 11). Use a torque wrench to torque to 18.5 ft.-lbs.

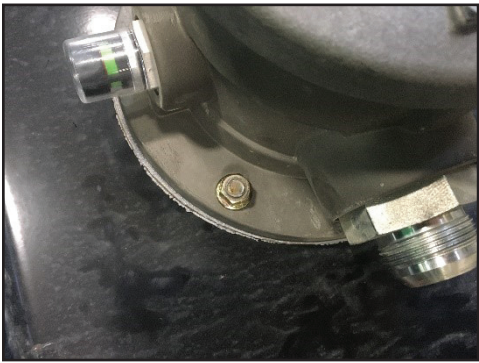


Figure 11

14. Reinstall the flare seal and the hardline plumbing to the filter head (Figure 12).

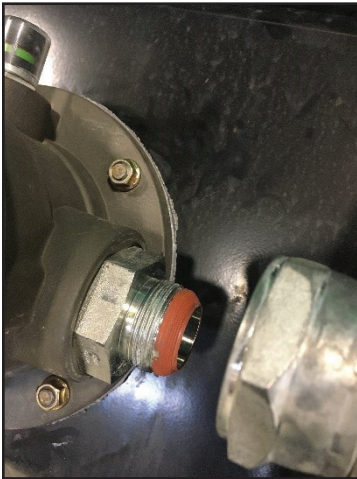


Figure 12

15. Secure the clamps mounting the hardline plumbing to the reservoir and tighten the clamp lock kits until tight (Figure 13).



Figure 13

16. Installation of the cork gasket kit to the hydraulic reservoir is complete.
17. Remove your company's Lockout/Tagout procedure. If your company does not have a Lockout/Tagout procedure, follow OSHA 1910.147 and 1910.146 Confined Space as appropriate. Remove the chocks from the vehicle's wheels and take the vehicle out of park.
18. Return vehicle to service.



(888) 686-7278

www.streetsmartparts.com