

FLA COE  
FLB COE  
FLD Conventional  
Business Class  
FLC 112 Conventional

Century Class Conventional  
Argosy  
Cargo  
Columbia  
122SD and Coronado

Business Class M2  
Cascadia  
108SD/114SD  
> New Cascadia

**Freightliner  
Service Bulletin**

## General Information

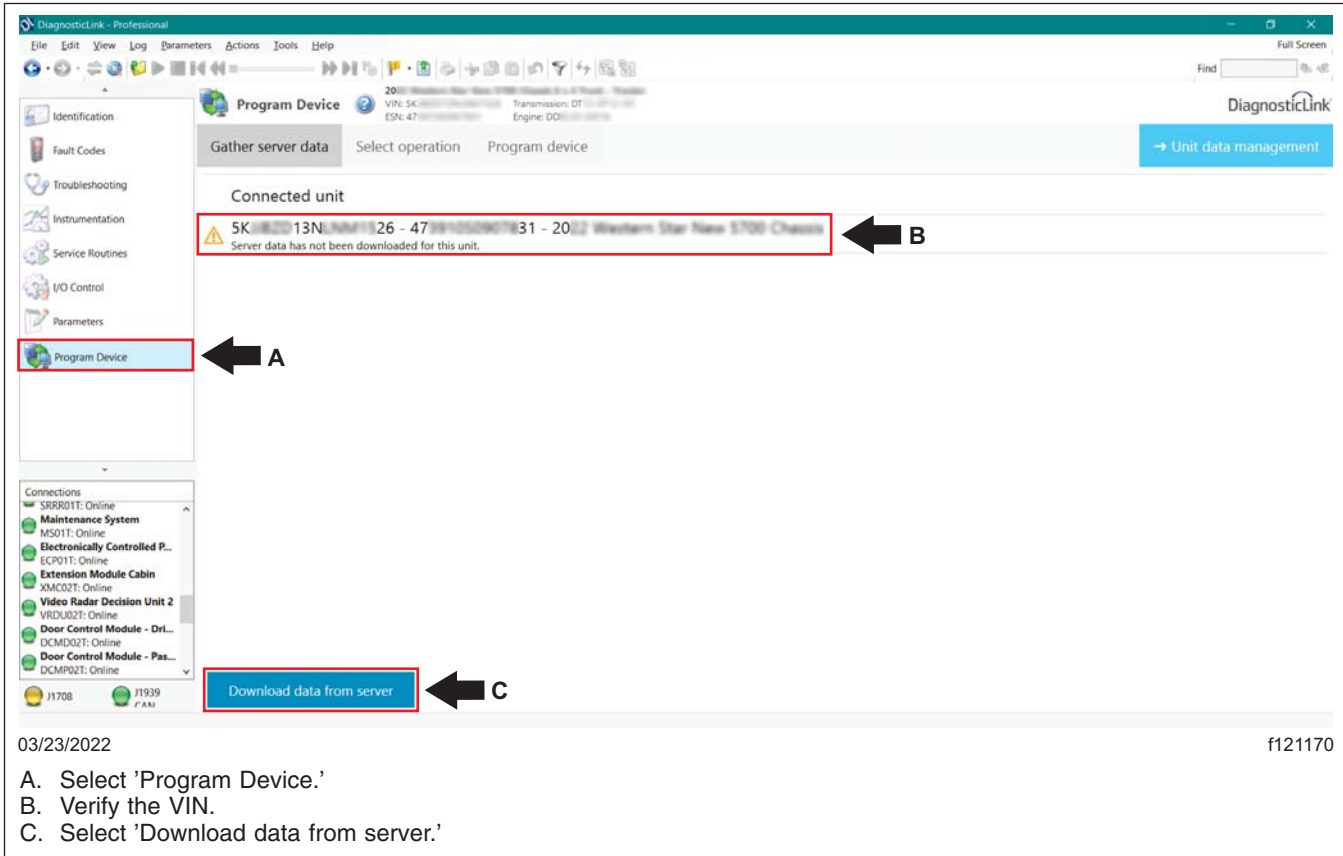
This service bulletin describes required maintenance system parameter changes that apply to New Cascadia™ vehicles with Detroit® DT12 transmissions used for line haul applications. This service bulletin applies to vehicles built between 7/10/2020 to 5/21/2022. Vehicles in line haul applications receive a maintenance due warning light at around 186,000 mi (299 274 km) instead of 600,000 mi (965 400 km).

**NOTE:** Predictive maintenance information is used to calculate oil change frequency. Actual oil change frequency may vary depending on driving conditions.

## Procedure

**IMPORTANT:** Make sure that DiagnosticLink® version 8.16 SP2 or later is installed on the laptop before programming the vehicle.

1. Park the vehicle on a level surface, shut down the engine, and apply the parking brake. Chock the tires.
2. Connect a laptop with DiagnosticLink to the vehicle diagnostic connector.
3. Turn the ignition key to the run position.
4. Start DiagnosticLink.
5. Go to 'Program Device' and make sure that the vehicle identification number (VIN) is correct. Then select 'Download data from server.' See [Fig. 1](#).



**Fig. 1, Downloading Data from the Server**

6. After the server data download is complete, go to the 'Parameters' tab. In the 'All Parameters' tab, go to the 'MS01T- Maintenance System,' 'Transmission, Parameters, EEPROM.' See [Fig. 2](#).

FLA COE  
FLB COE  
FLD Conventional  
Business Class  
FLC 112 Conventional

Century Class Conventional  
Argosy  
Cargo  
Columbia  
122SD and Coronado

Business Class M2  
Cascadia  
108SD/114SD  
> New Cascadia

Freightliner  
Service Bulletin

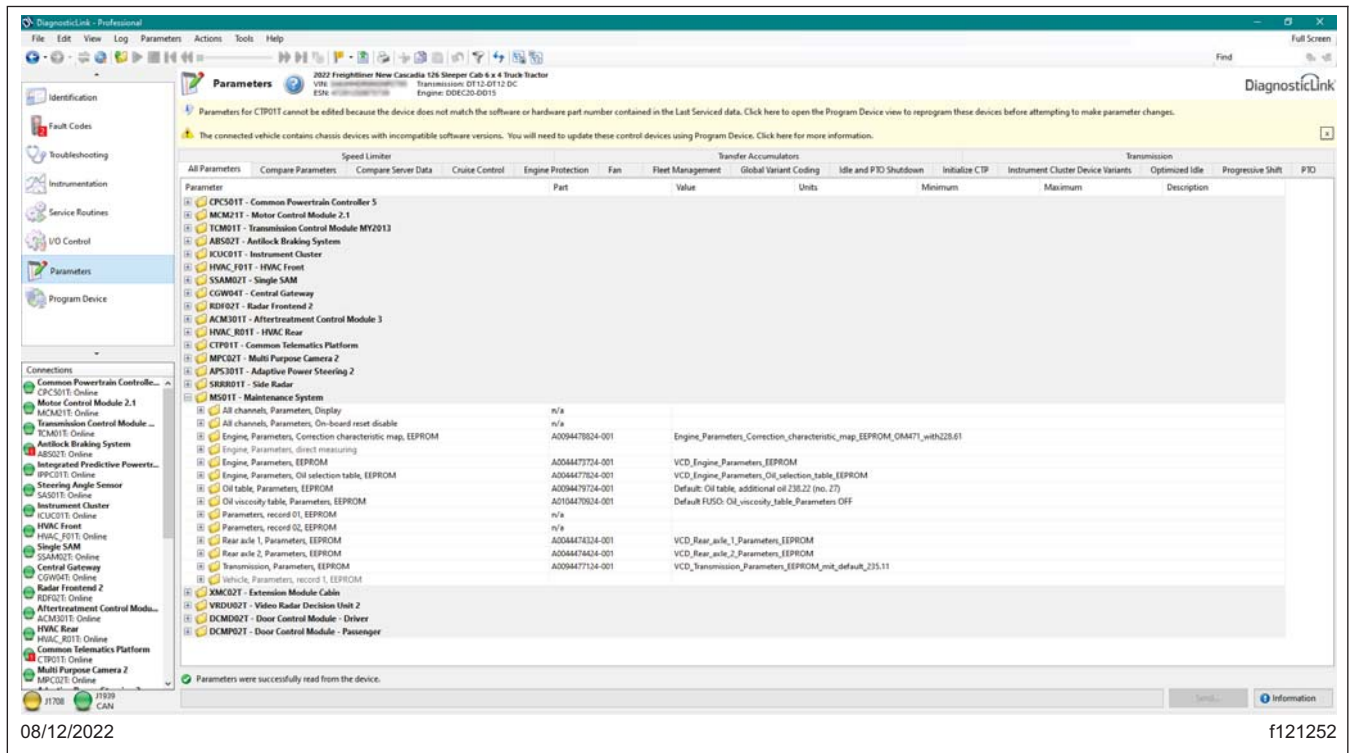


Fig. 2, Navigating to MS01T - Maintenance System

7. Select the correct parameter for the line haul application. Select 'Oil selection table, row 02, maximum driving distance (PAR\_OatZ02FsMax\_GET).' Select parameter 'A0074472324-001 Oil selection row 02, NAFTA, extended interval, 600k miles.' For line haul applications, select 'A0074472324-001 Oil selection row 02, NAFTA, extended interval, 600k miles.' See Fig. 3.

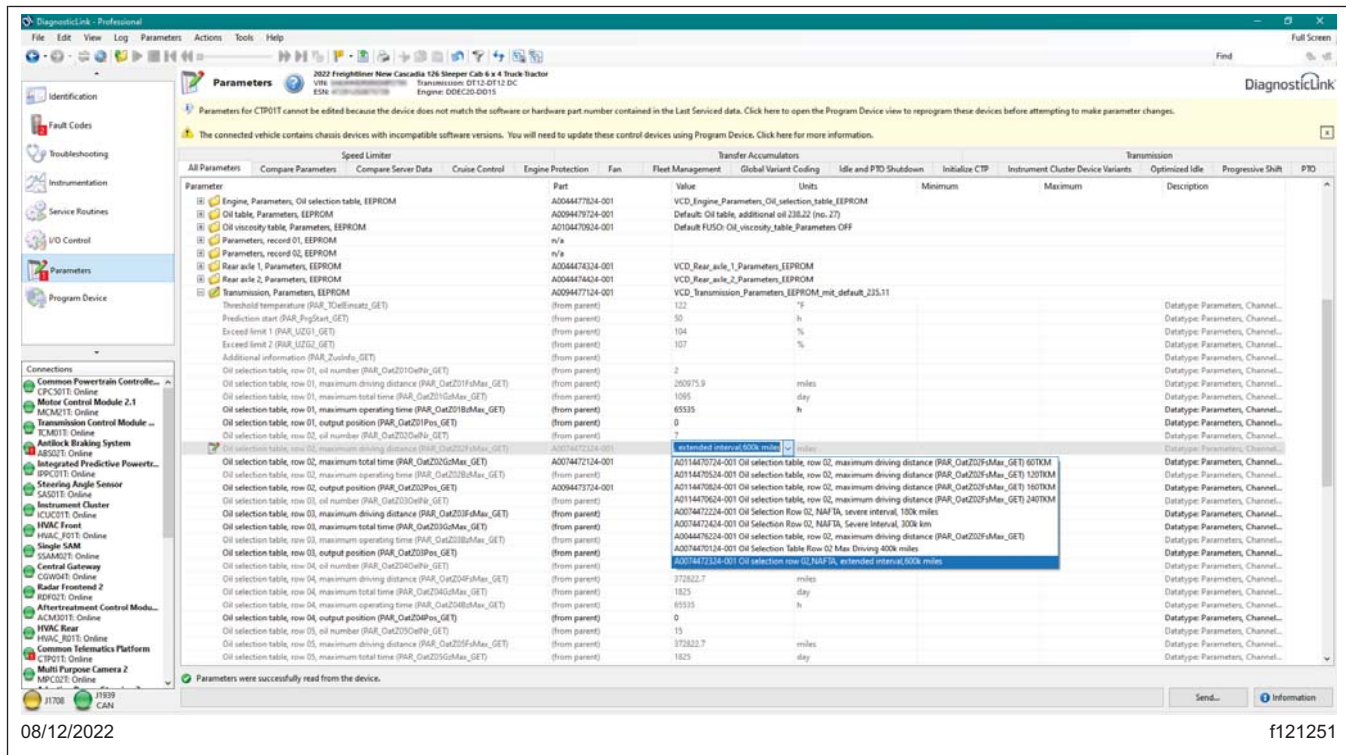


Fig. 3, Selecting Extended 600k Mile Interval

8. Select the 'Send' button to write the parameter change to the vehicle. See Fig. 4.

FLA COE  
FLB COE  
FLD Conventional  
Business Class  
FLC 112 Conventional

Century Class Conventional  
Argosy  
Cargo  
Columbia  
122SD and Coronado

Business Class M2  
Cascadia  
108SD/114SD  
> New Cascadia

Freightliner  
Service Bulletin

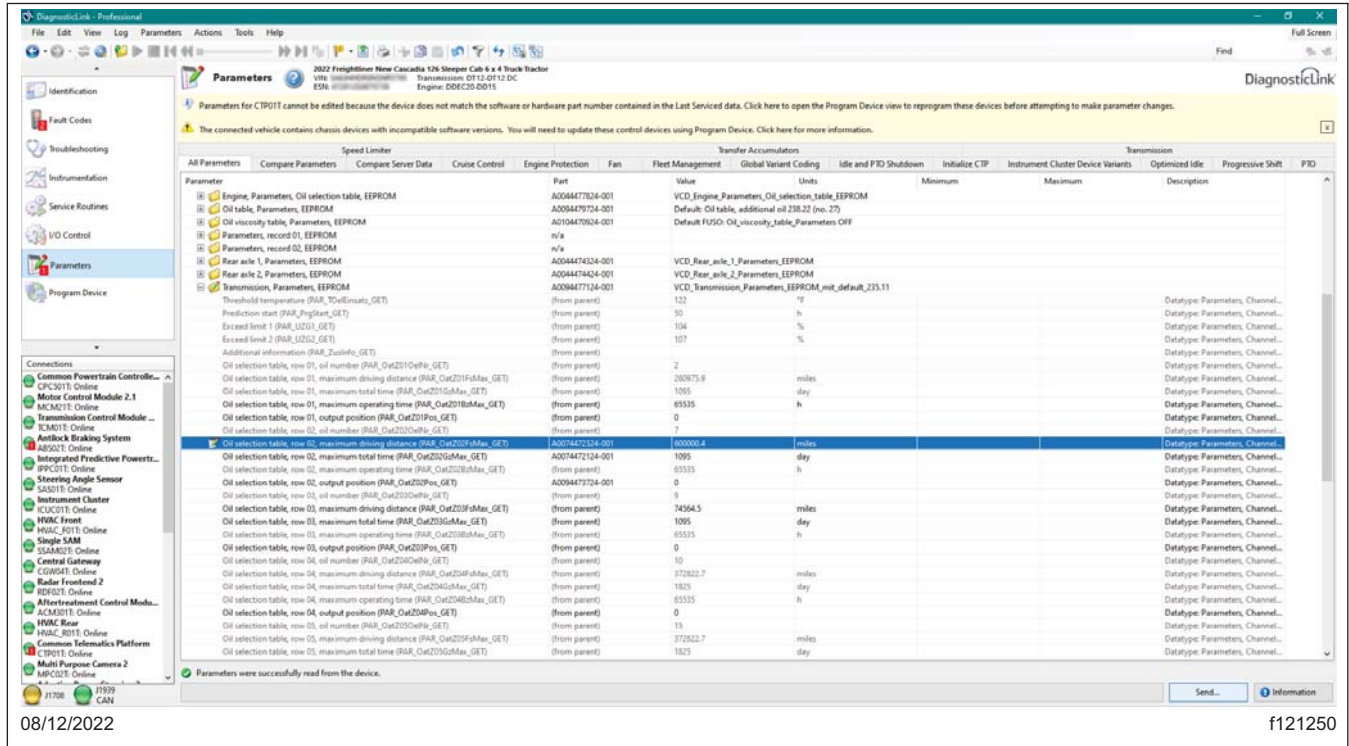


Fig. 4, Writing Parameter Changes to the Vehicle

9. Select 'OK' in the 'Confirm Parameter Send' dialog box. See Fig. 5.

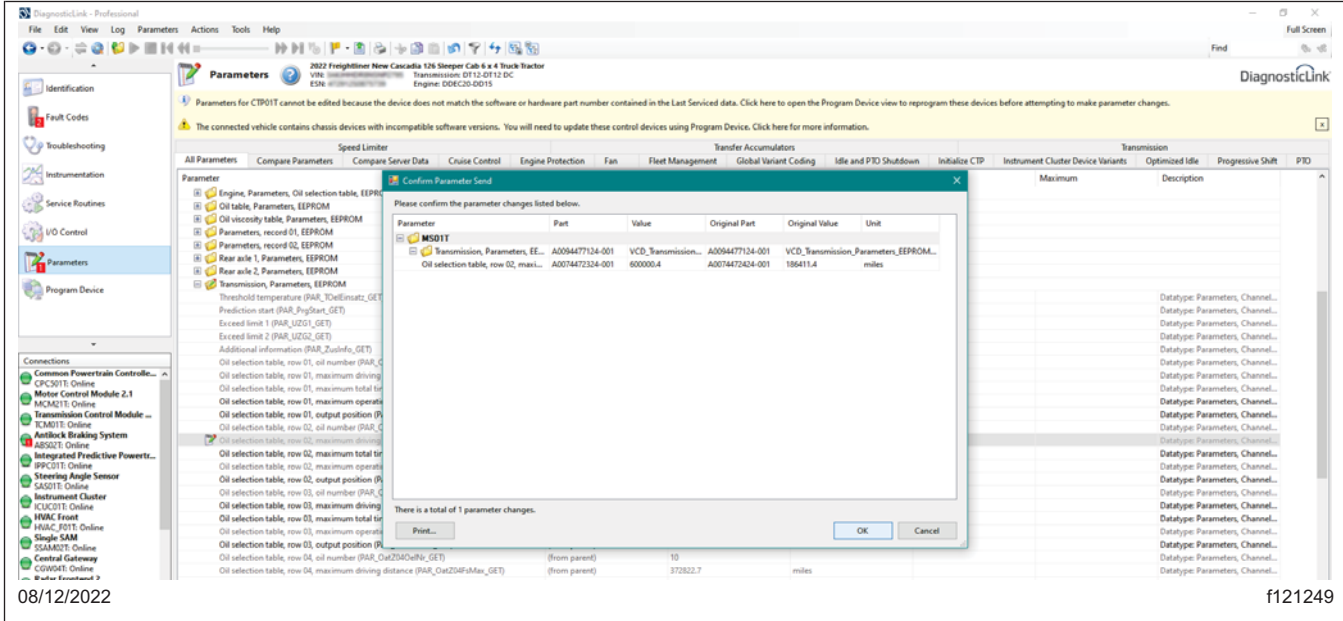


Fig. 5, Confirming Parameter Changes

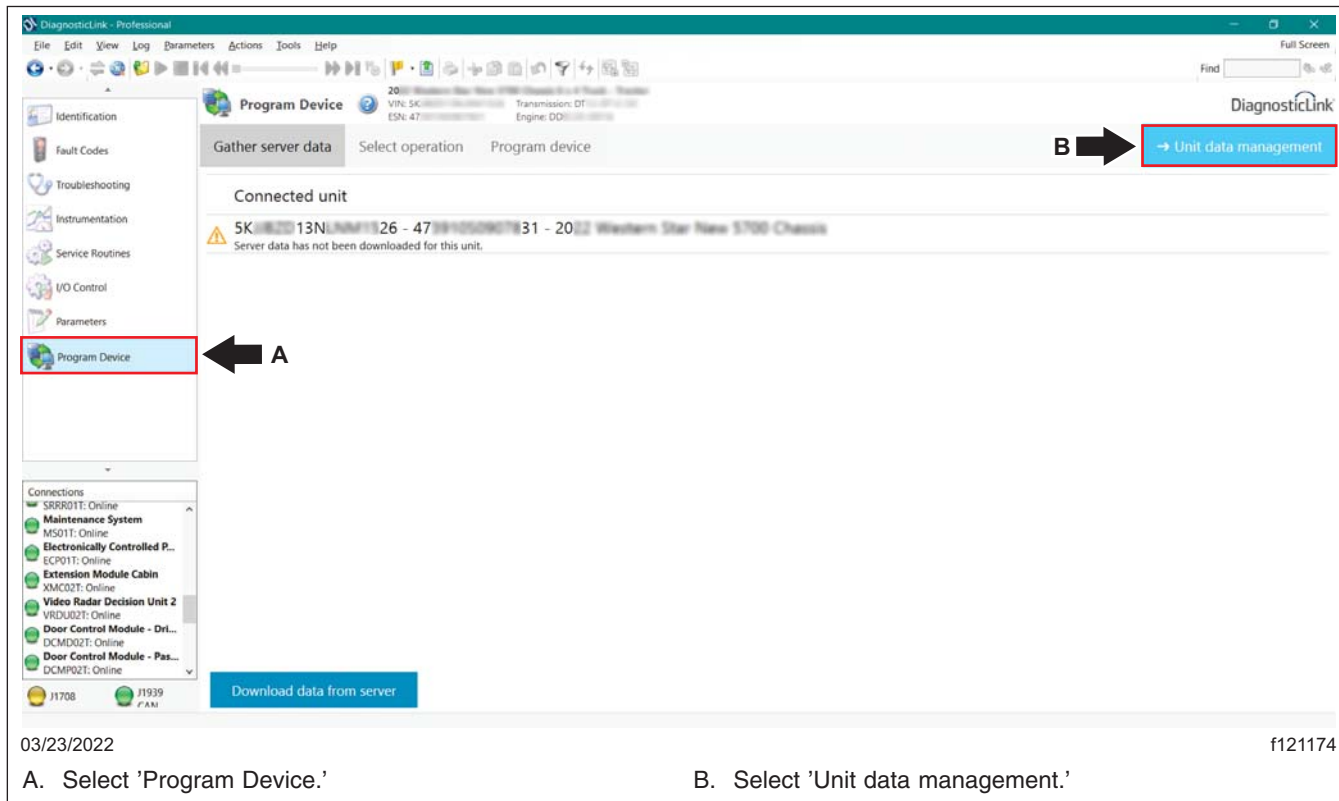
10. Go to the 'Program Device' tab and select 'Unit data management' in the upper right corner. See Fig. 6.

FLA COE  
FLB COE  
FLD Conventional  
Business Class  
FLC 112 Conventional

Century Class Conventional  
Argosy  
Cargo  
Columbia  
122SD and Coronado

Business Class M2  
Cascadia  
108SD/114SD  
> New Cascadia

Freightliner  
Service Bulletin



**Fig. 6, Selecting Unit Data Management**

11. The information corresponding to the VIN should appear under 'Unit data for upload.' Select 'Connect to server' to upload the new parameters. See [Fig. 7](#).

## Freightliner Service Bulletin

FLA COE  
FLB COE  
FLD Conventional  
Business Class  
FLC 112 Conventional

Century Class Conventional  
Argosy  
Cargo  
Columbia  
122SD and Coronado

Business Class M2  
Cascadia  
108SD/114SD  
> New Cascadia

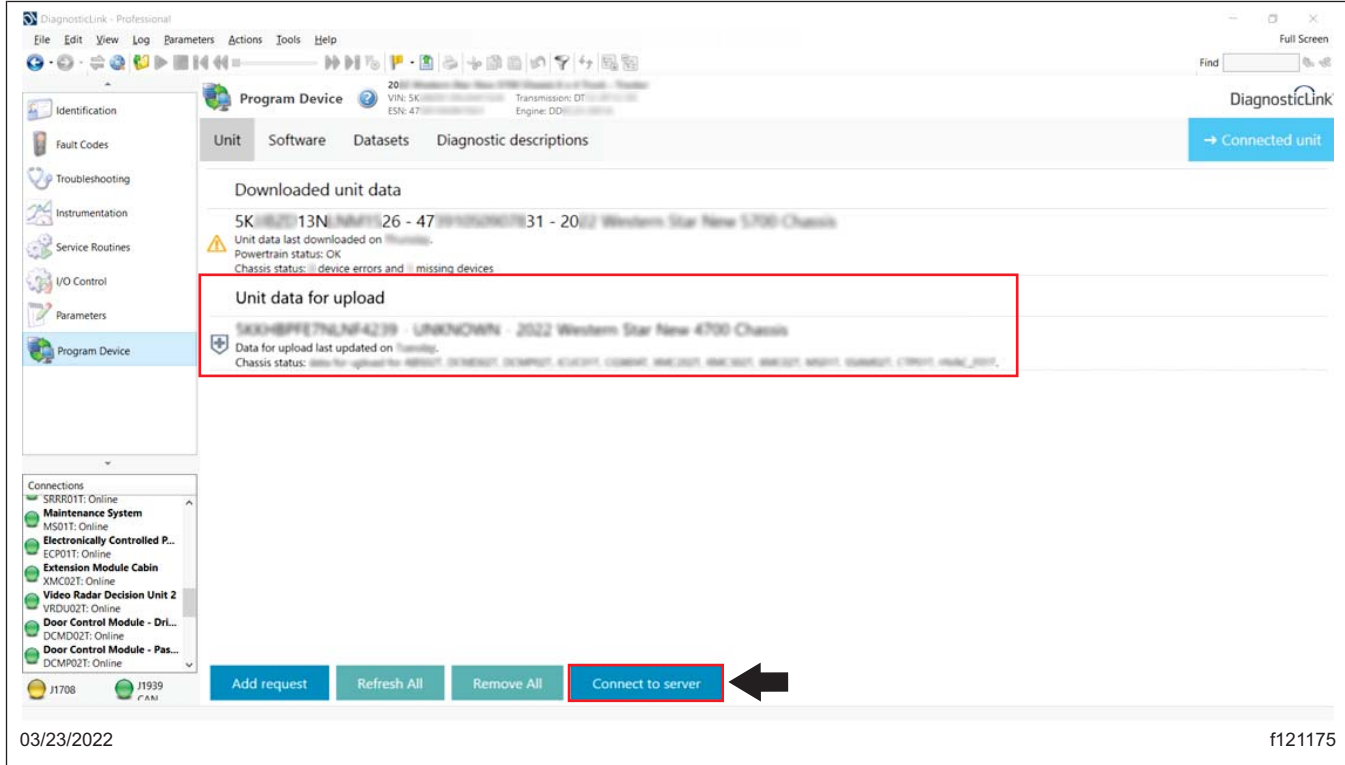


Fig. 7, Uploading the New Parameters

12. Once the parameter updates are made, disconnect from DiagnosticLink.
13. Turn the ignition key to the off position.
14. Disconnect the laptop.

## Warranty

This procedure is warrantable only if the described condition exists and the repair is performed within the applicable base or extended coverage warranty period. If a failure is not found, this procedure is considered preventive and warranty does not apply.

Normal warranty applies. See [Table 1](#) for OWL VMRS codes and labor allowance information. Enter this service bulletin number in the *Service Bulletin #* field.

OWL VMRS Codes and Labor Allowance						
Primary Failed Part	Component Code	Cause Code	Correction Code	SRT Code	Description	Time: Hours
SOFTWARE	003-006-018	95	29	343-5021A	DT12 Oil Change Interval Parameter Update, (SB54-357)	0.4

Table 1, OWL VMRS Codes and Labor Allowance