



Technical Service Bulletin

66 Front radiator grille trim incorrect for vehicle

66 22 92 2068096/1 September 28, 2022.

Model(s)	Year	VIN Range	Vehicle-Specific Equipment
Q8	2023	000001 – 003082	Not Applicable

Condition

Customer states:

The trim that surrounds the radiator grille is the incorrect color for the intended build configuration of the vehicle.

Workshop findings:

The error in production regarding the radiator grille trim color installed is confirmed (e.g. black trim intended, grey trim installed).

Technical Background



Technical Service Bulletin

The trim that surrounds the front radiator grille installed in production is grey instead of the intended black trim.

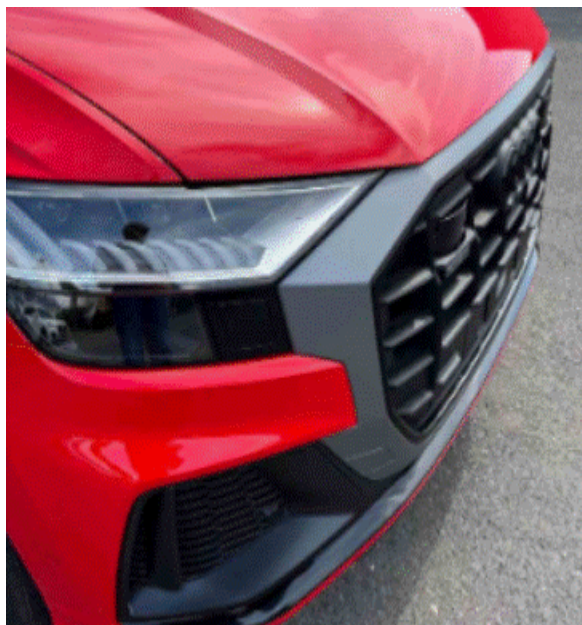


Figure 1. Grey radiator grille trim installed. Black trim intended.



Technical Service Bulletin

Figure 2 shows the correct configuration with a black radiator trim.



Figure 2. Correctly configured radiator grille trim in black.

Production Solution

The production process has been corrected.

Service

Replace the radiator grille trim with the correct black trim.



Technical Service Bulletin

Warranty

Claim Type:	<ul style="list-style-type: none"> • 910 Before Delivery. • 110 up to 6 Months/6,000 Miles. • If the vehicle is outside any warranty, this Technical Service Bulletin is informational only. 		
Service Number:	6605		
Damage Code:	0012		
Labor Operations:	Front trim remove and reinstall (base configuration)	6601 1900	See SRT with associated operations
	Front trim replace	6601 5551	See SRT with associated operations
	-or-		
	Front trim remove and reinstall (with parking aid)	6601 1902	See SRT with associated operations
	Front trim replace	6601 5551	See SRT with associated operations
	-or-		



Technical Service Bulletin

	Front trim remove and reinstall (with night vision camera, overhead view camera, radar sensor and parking aid)	6601 1904	See SRT with associated operations
	Front trim replace	6601 5551	See SRT with associated operations
-or-			
	Front trim remove and reinstall (RSQ8)	6601 1955	See SRT with associated operations
	Front trim replace	6601 5551	See SRT with associated operations
If painted at the dealer:			
	Body prepare painting	5101 7163	See SRT with associated operations
	Radiator grille paint new part	6605 6150	See SRT with associated operations
If painted at body shop:			
	Radiator grille paint new part	L0011600 (Solid Paint)	Max 170 TU x dealer labor rate




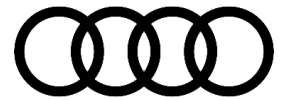
Technical Service Bulletin

	(Sublet Labor Operation listed in Outside Labor)	L0021600 (Metallic Paint) L0031600 (Pearl Paint)	
Diagnostic Time:	GFF	No allowance	0 TU
	Road test prior to the service procedure	No allowance	0 TU
	Road test after the service procedure	No allowance	0 TU
Claim Comment:	As per TSB 2068096/1		


All warranty claims submitted for payment must be in accordance with the *Audi Warranty Policies and Procedures Manual*. Claims are subject to review or audit by Audi Warranty.

Required Parts and Tools

Always check with your Parts Department and/or ETKA for the latest information and parts bulletins.		
Part Number	Part Description	Quantity
4M8 807 725 GRU	 Trim	1



Technical Service Bulletin

4M8 807 241 GRU	 Cover for towing eye	1
-----------------	--	---

Additional Information

All parts and service references provided in this TSB (2068096) are subject to change and/or removal.

©2022 Audi of America, Inc. All rights reserved. The information contained in this document is based on the latest information available at the time of printing and is subject to the copyright and other intellectual property rights of Audi of America, Inc., its affiliated companies, and its licensors. All rights are reserved to make changes at any time without notice. No part of this document may be reproduced, stored in a retrieval system, or transmitted in any form or by any means, electronic, mechanical, photocopying, recording, or otherwise, nor may these materials be modified or reposted to other sites, without the prior expressed written permission of the publisher.