



## Technical Bulletin 225 06.2022

### Contents

<b>Item</b>	<b>Subject</b>	<b>Model Affected</b>
225.1	Triumph Diagnostic Tool 2022-07 Update - ECM Status Report Feature - Beta A	Models fitted with an Engine ECM with three connectors
225.2	Triumph Diagnostic Tool 2022-07 Update - Introduction of New Headlight ECM Hardware	Tiger 1200 GT, Tiger 1200 GT Pro, Tiger 1200 GT Explorer, Tiger 1200 Rally, Tiger 1200 Rally Explorer
225.3	Triumph Diagnostic Tool 2022-07 Update - Calibrations Removed From Service	See Item 3

**Item:** 225.1

**Description:** Triumph Diagnostic Tool 2022-07 Update - ECM Status Report Feature - Beta A

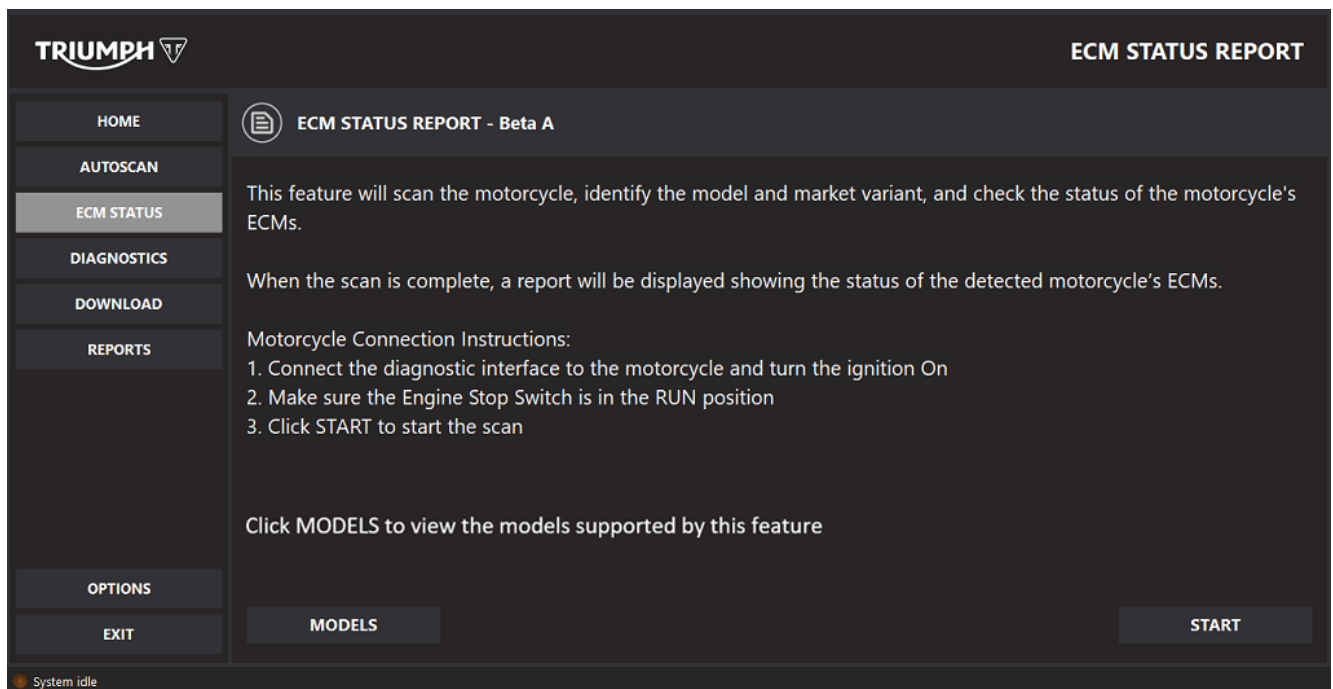
**Model Affected:** Models fitted with an Engine ECM with three connectors

The Triumph Diagnostic Tool (TDT) 2022-07 release includes a Beta version of the new ECM Status Report feature.

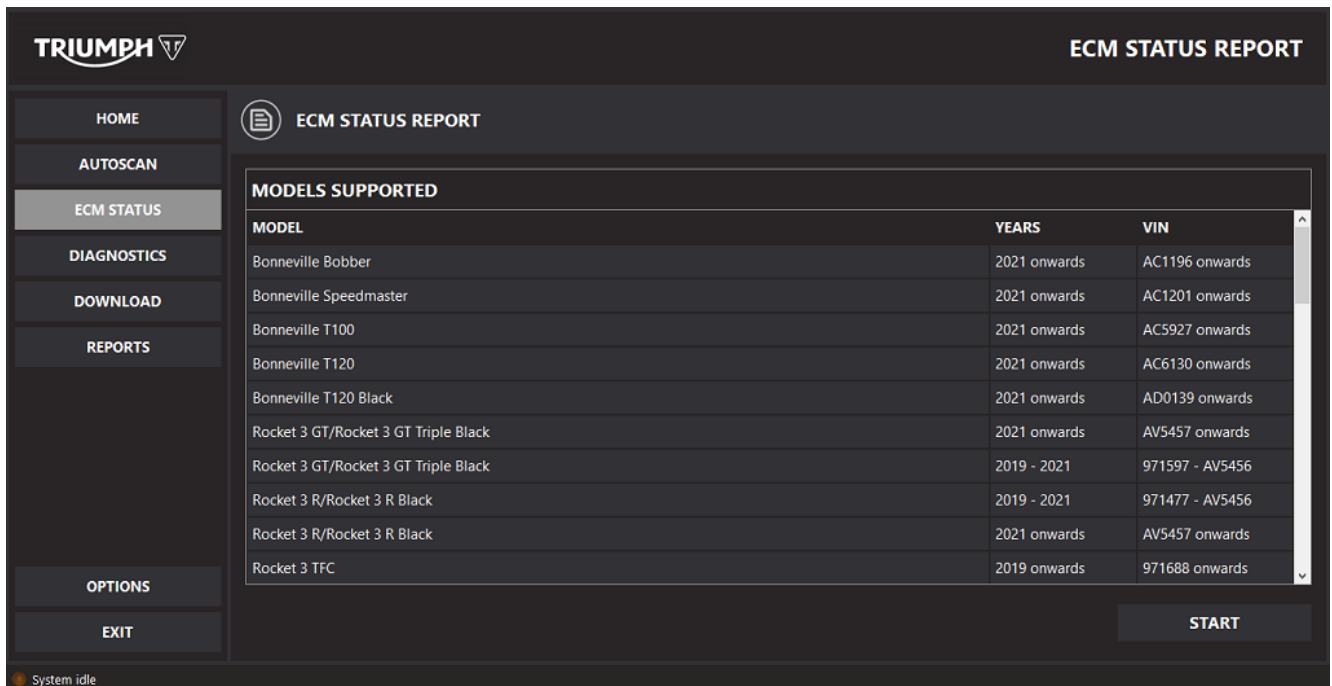
The ECM Status Report feature is designed to scan the connected motorcycle, identify the model type and variant, and check the status of each of the motorcycle's Electronic Control Modules (ECMs).

When the scan is complete, a report will be displayed showing the motorcycle details, along with a summary of the software, calibration and DTC status of each of the motorcycle's ECMs.

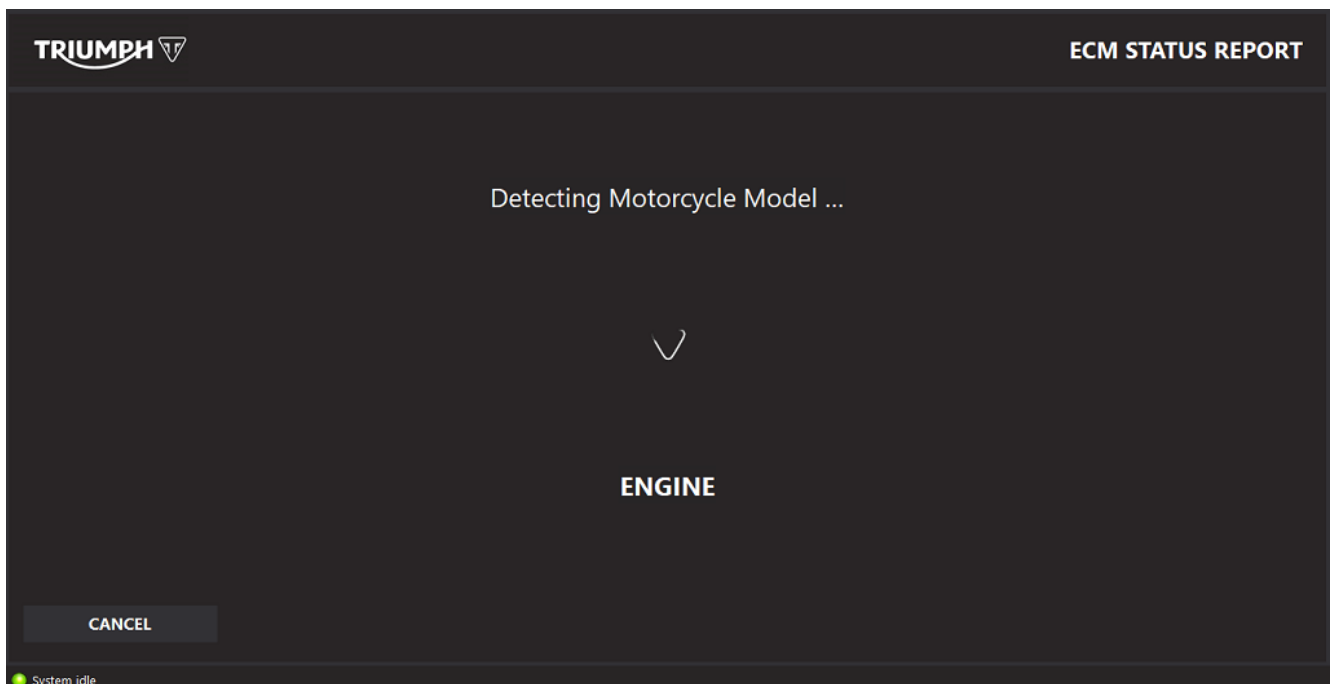
1. Clicking the **ECM STATUS** button will display the landing screen. This screen has information about the ECM Status Report feature and how it functions.



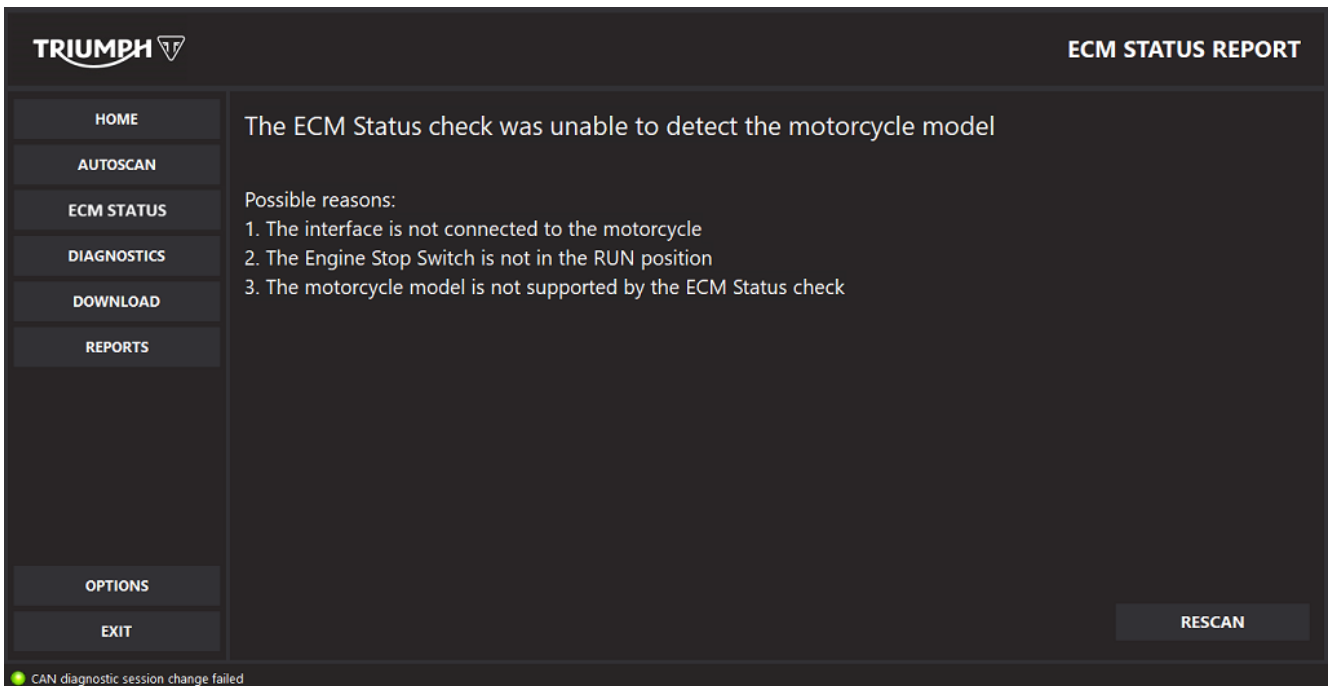
2. Selecting the **MODELS** button will display a list of all models supported by the ECM Status Report feature.



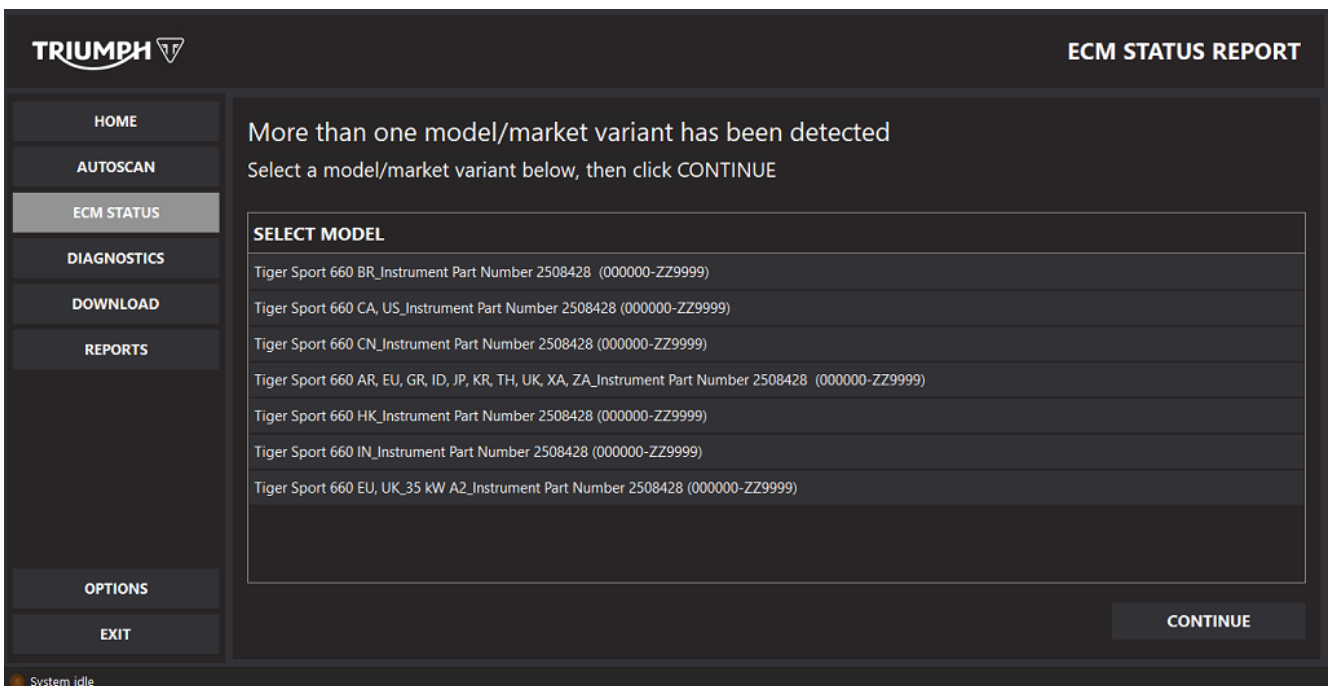
3. Click **START** to begin.
4. The diagnostic tool will begin scanning the connected motorcycle to identify the model type, variant and status of each ECM.



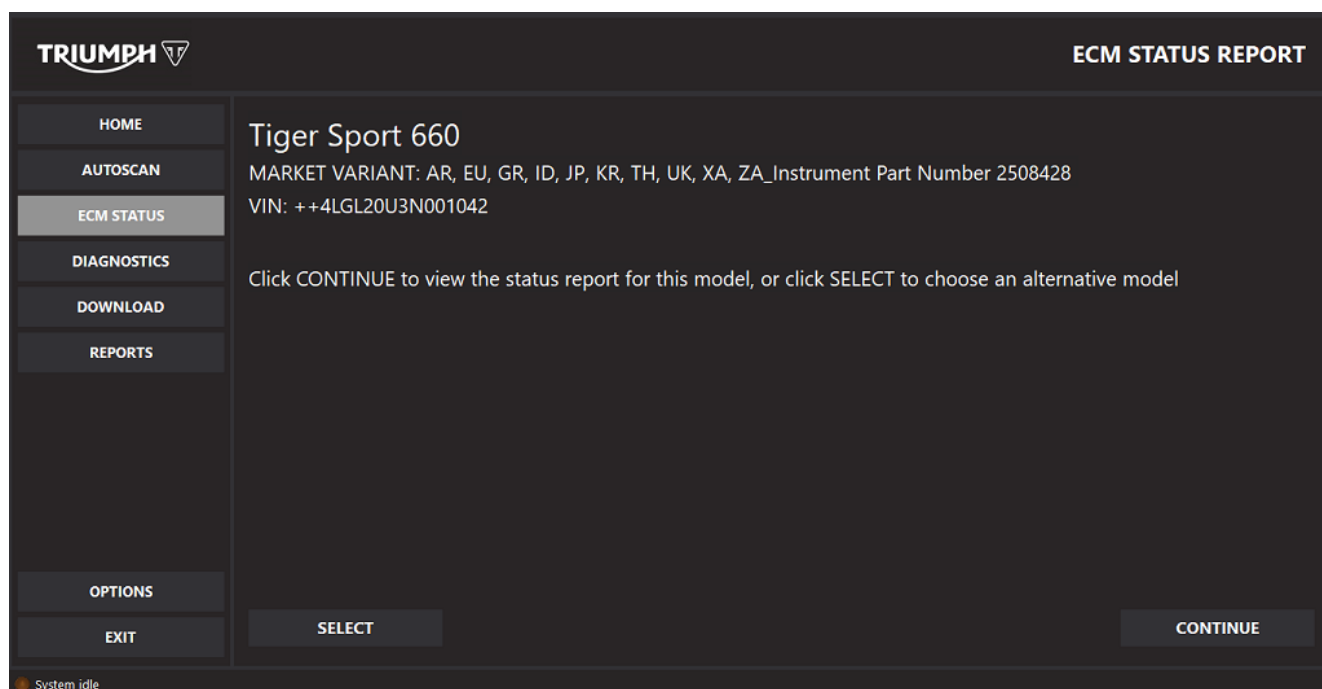
5. If the scan is unable to detect the motorcycle model, the diagnostic tool will display the following screen detailing possible reasons for the failure.



6. If the scan is unable to identify the specific market variant of the connected motorcycle, a list of all possible market variants will be displayed. A guide to the codes used in the market variant description is provided later in this instruction.
7. Once a specific market variant has been selected, press **CONTINUE** and the diagnostic tool will progress to the report for the chosen market variant.



8. However if the scan successfully reads back all the required information from the connected ECMs, the details of the detected model and market variant will be displayed.



9. Check the details of the connected motorcycle are correct then click **CONTINUE** to progress to the report.
10. Alternatively click **SELECT** to access the list of available model/market variants.

11. The report screen displays all information that has been retrieved from the connected motorcycle including the model name, VIN and the current status of each ECM that the detected model should be fitted with.

The screenshot shows the Triumph ECM Status Report interface. The top left features the Triumph logo, and the top right displays 'ECM STATUS REPORT'. A left-hand navigation menu includes options: HOME, AUTOSCAN, ECM STATUS (highlighted), DIAGNOSTICS, DOWNLOAD, REPORTS, OPTIONS, and EXIT. The main content area shows the motorcycle model 'Tiger Sport 660', its market variant (AR, EU, GR, ID, JP, KR, TH, UK, XA, ZA), instrument part number (2508428), and VIN (+4LGL20U3N001042). Below this is a table with two columns: 'ECM STATUS SUMMARY:' and 'ISSUES DETECTED'. The table lists several ECM components with their status colors and expandable icons (+): ENGINE ECM (Green), ABS (Amber), INSTRUMENTS (Red), IMMOBILISER/KEYLESS ECM (Amber), and CONNECTIVITY MODULE (Green). At the bottom of the interface are buttons for 'RESCAN' and 'SAVE TO PDF'. A status indicator at the bottom left shows 'System idle'.

ECM STATUS SUMMARY:	ISSUES DETECTED
ENGINE ECM	+
ABS	+
INSTRUMENTS	+
IMMOBILISER/KEYLESS ECM	+
CONNECTIVITY MODULE	+

12. The status of each ECM is indicated via colour coding. These are as follows:
- Green - ECM is up to date and no DTCs are present
  - Amber - ECM is up to date and DTCs are present
  - Red - ECM is out date and DTCs may or may not be present.
13. The rescan button can be used to refresh the ECM Status Report results after clearing DTCs or if a new motorcycle has been connected.

14. The scroll bar on the right hand side can be used to navigate the ECM Status Report screen and each ECM section can be expanded to view more detail. This includes a description, current and expected values as well as the action that should be taken by the user.

**TRIUMPH** **ECM STATUS REPORT**

**HOME** Tiger Sport 660  
**AUTOSCAN** MARKET VARIANT: AR, EU, GR, ID, JP, KR, TH, UK, XA, ZA\_Instrument Part Number 2508428  
**ECM STATUS** VIN: ++4LGL20U3N001042

**DIAGNOSTICS** **ECM STATUS SUMMARY:** **ISSUES DETECTED**

Description	Current Value	Expected Value	Action	
Application Software Part Number	02570043	02570043	No Action Required	<input checked="" type="checkbox"/>
Application Software Issue Level	030000	030000	No Action Required	<input checked="" type="checkbox"/>
Application Data Software Part Number	02570641	02570641	No Action Required	<input checked="" type="checkbox"/>
Application Data Software Issue Level	010000	010000	No Action Required	<input checked="" type="checkbox"/>
Calibration ID1	975102	975102	No Action Required	<input checked="" type="checkbox"/>
Calibration ID2	972103	972103	No Action Required	<input checked="" type="checkbox"/>
Calibration ID3	028502	026702	Update Available	<input type="checkbox"/>

**OPTIONS** **EXIT** **RESCAN** **SAVE TO PDF**

System idle

15. Once all out of date ECMs have been updated to their latest versions and all DTCs have been cleared, all sections should be highlighted in green.

**TRIUMPH** **ECM STATUS REPORT**

**HOME** Tiger Sport 660  
**AUTOSCAN** MARKET VARIANT: CA, US\_Instrument Part Number 2508428  
**ECM STATUS** VIN: ++4LGL20U3N001042

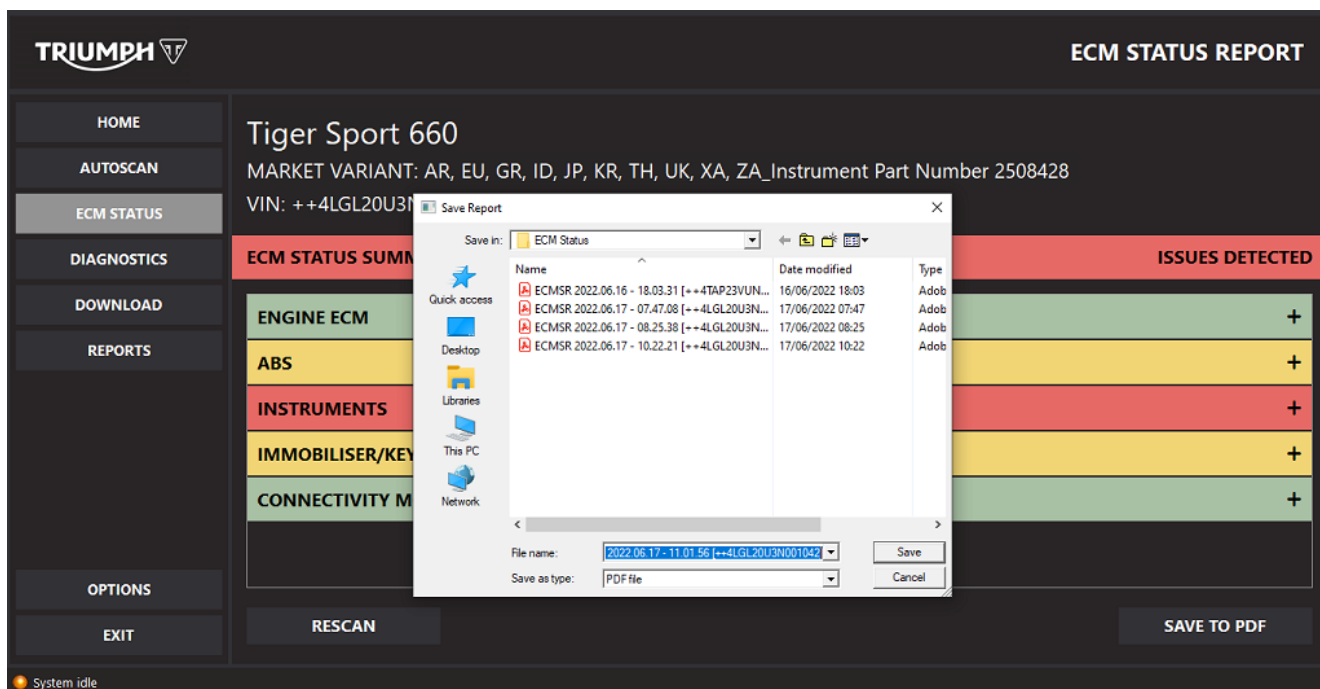
**DIAGNOSTICS** **ECM STATUS SUMMARY:** **READY FOR THE RIDE**

- ENGINE ECM** +
- ABS** +
- INSTRUMENTS** +
- IMMOBILISER/KEYLESS ECM** +
- CONNECTIVITY MODULE** +

**OPTIONS** **EXIT** **RESCAN** **SAVE TO PDF**

System idle

16. The ECM Status Report can be saved for viewing or printing by clicking the **SAVE TO PDF** button.
17. The file name will be automatically populated in the following naming format:
  - ECMSR - DATE - TIME - FULL VIN (if a VIN is stored in the ECM). For example; ECMSR 2022.06.15 - 11.47.05 (SMTTC338DDT000000).
18. Click Save to save and generate the report.



19. Upon clicking Save, the PDF report will be automatically opened in your PDF reader or browser.

VIN: ++4LGL20U3N001042

17/06/2022

## Tiger Sport 660

MARKET VARIANT: AR, EU, GR, ID, JP, KR, TH, UK, XA, ZA\_Instrument Part Number 2508428

VIN: ++4LGL20U3N001042



### ECM Status Summary: Issues Detected

#### Engine ECM

Description	Current Value	Expected Value	Action
Software Startup Version	202301	202301	No Action Required
Calibration Number	031186	031186	No Action Required
Build Number	01	01	No Action Required
Number Of DTCs	0	0	No Action Required
ECM Calibration Lock Status	Unlocked	Unlocked	No Action Required

#### ABS

Description	Current Value	Expected Value	Action
Number Of DTCs	1	0	Check the stored DTCs

#### Instruments

Description	Current Value	Expected Value	Action
Application Software Part Number	02570043	02570043	No Action Required
Application Software Issue Level	030000	030000	No Action Required
Application Data Software Part Number	02570641	02570641	No Action Required
Application Data Software Issue Level	010000	010000	No Action Required
Calibration ID1	975102	975102	No Action Required
Calibration ID2	972103	972103	No Action Required
Calibration ID3	028502	026702	Update Available
Number Of DTCs	2	0	Check the stored DTCs

#### Immobiliser/Keyless ECM

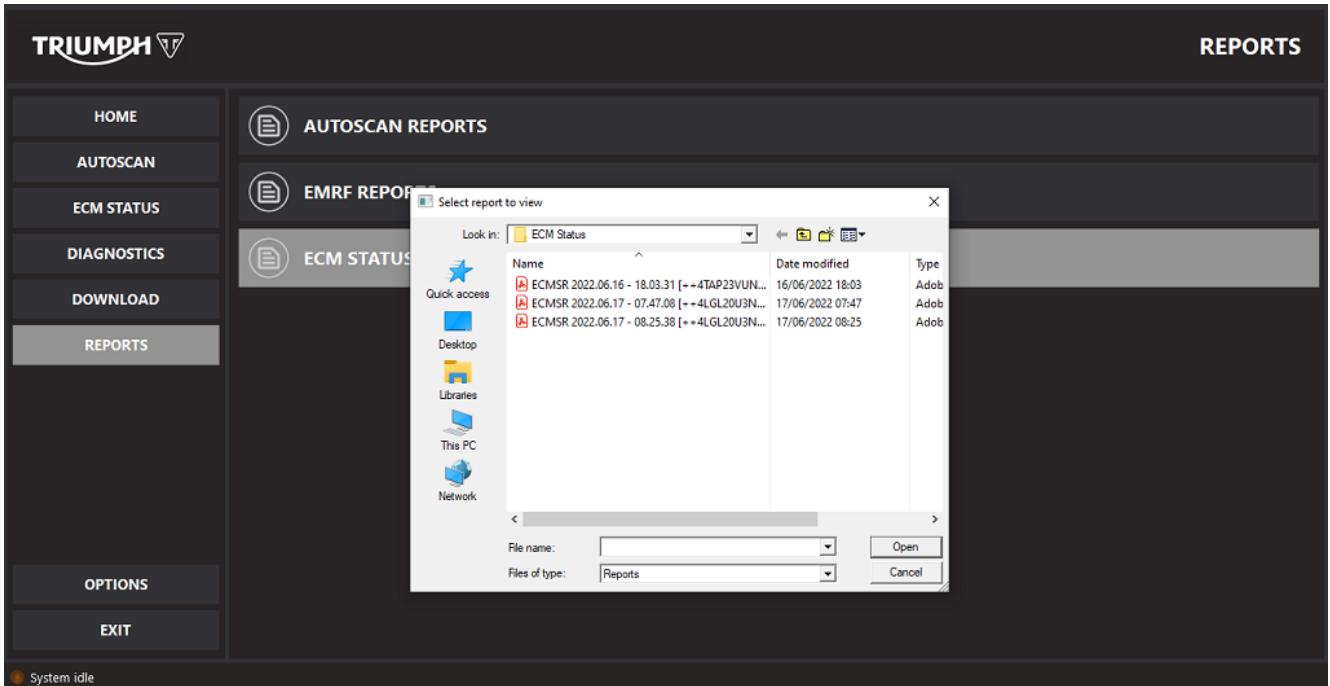
Description	Current Value	Expected Value	Action
Number Of DTCs	1	0	Check the stored DTCs

#### Connectivity Module

Description	Current Value	Expected Value	Action
Manufacturer Application Software Identification	1.7.2	1.7.2	No Action Required

Page 1/2

20. Saved ECM Status report files can be accessed from the REPORTS menu.



21. ECM Status PDF files are stored with the file naming convention ECMSR - DATE - TIME - FULL VIN (if a VIN is stored in the ECM). For example; ECMSR 2022.06.15 - 11.47.05 (SMTTC338DDT000000).

### Navigating Away from the ECM Status Report Summary Screen

1. After the ECM Status Report has been generated, the Main Menu can be used to navigate away from the feature to access the Diagnostics and Download areas to check and clear faults and perform updates.
2. When returning back to the ECM Status feature, the results of the last motorcycle scan will still be present.
3. Use the RESCAN button to refresh the ECM Status report for the currently connected motorcycle, after clearing faults and performing updates.
4. The RESCAN button can also be used to start a new report when connecting to a new motorcycle.

---

## Market Variant Codes Guide

Market Code	Markets Included
AR	Argentina; Chile; Colombia; Mexico
AU	Australia
BL	Belgium
BL_85kW	Belgium 85kW
BR	Brazil
CA	Canada
CH	Switzerland
CN	China
DE	Germany
EU	Belgium; France; Germany; Italy; Netherlands; Spain; Sweden; Switzerland
ES	Spain
FR	France
GR	Czech Republic; Greece; Hungary; Israel; Philippines; Poland; Russia; Turkey; Vietnam
HK	Taiwan
ID	Indonesia
IN	India
IT	Italy
JP	Japan
KR	Korea
NL	Netherlands
NZ	New Zealand
SE	Sweden
TH	Thailand
US	United States of America
UK	United Kingdom
XA	United Arab Emirates; Qatar
ZA	Malaysia; Singapore; South Africa

---

<b>Item:</b>	<b>225.2</b>
<b>Description:</b>	<b>Triumph Diagnostic Tool 2022-07 Update - Introduction of New Headlight ECM Hardware</b>
<b>Model Affected:</b>	<b>Tiger 1200 GT, Tiger 1200 GT Pro, Tiger 1200 GT Explorer, Tiger 1200 Rally, Tiger 1200 Rally Explorer</b>

A new version of headlight ECM hardware has been introduced for the above models.

The new headlight ECM hardware version has dedicated software that is not compatible with the previous version of the headlight ECM hardware.

The Triumph diagnostic tool has been updated to detect the headlight ECM hardware version when performing headlight ECM downloads on the above models. These changes take effect from the diagnostic tool version 2022-07 onwards. Dealers are requested to make sure that they are always using the latest version of the Triumph diagnostic tool when performing downloads on motorcycles.

From version 2022-07, the diagnostic tool will only allow software to be downloaded that is correct for the headlight ECM hardware version detected. This works as follows for the Automatic and Manual download areas with exception to downloads performed on headlight ECMs in an unresponsive state.

### **Caution**

Always use diagnostic tool version 2022-07 or later when downloading calibrations to the headlight on the above models.

Using an older version of the diagnostic tool may cause irreparable damage to the motorcycle headlight ECM.

#### **Automatic Model Detection Downloads**

The diagnostic tool will automatically detect the headlight ECM hardware version by reading the "Triumph Base Part Number" from the headlight ECM upon motorcycle connection. When the tool progresses to the calibration selection menu, only calibrations that are appropriate for the model and headlight ECM hardware version will be made available for download. The tune help text displayed will also contain the headlight base part number that matches that of the connected headlight ECM.

Automatic Model Detection should be used wherever possible to perform headlight updates in service.

#### **Manual Model Selection Downloads**

### **Caution**

Always download the correct calibration for the headlight hardware version fitted to your motorcycle model.

Downloading an incorrect calibration may cause irreparable damage to the motorcycle headlight ECM.

The diagnostic tool will display all available calibrations for the above models in the calibration selection menu.

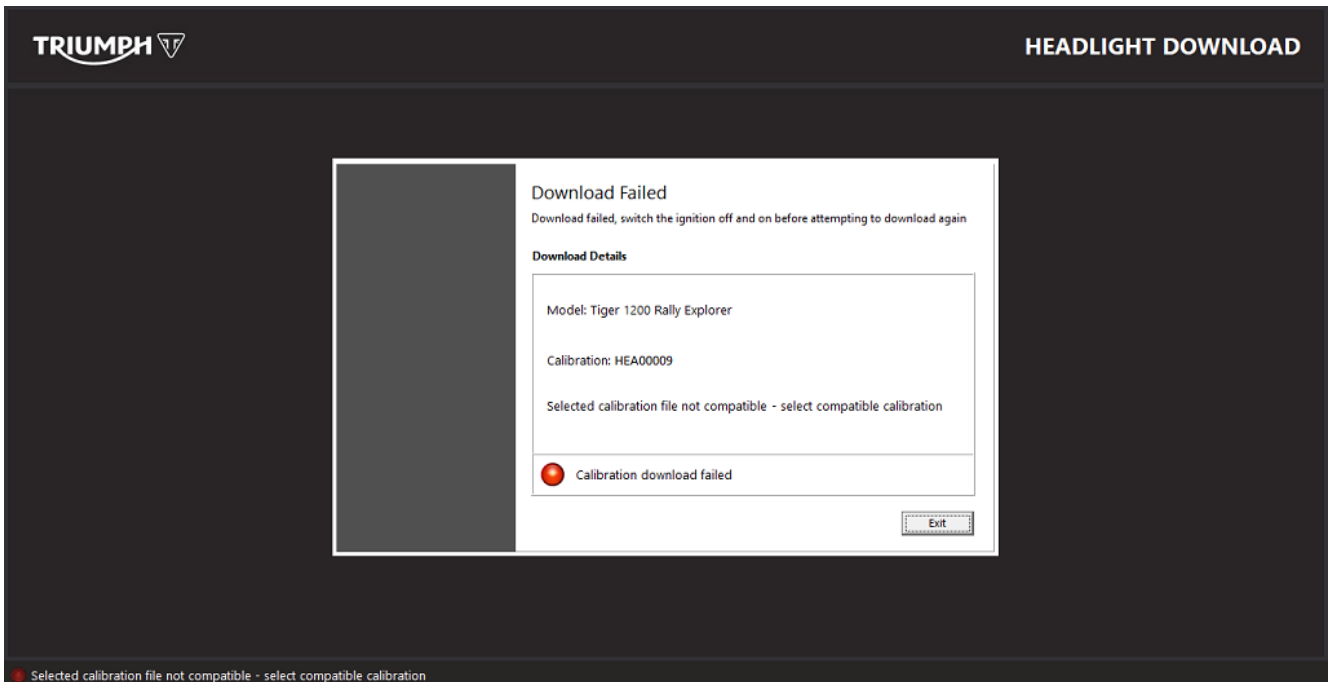
Upon selecting a calibration for download from this area, the tool will attempt to detect the headlight ECM hardware version before allowing the download to start.

#### **Note:**

- **Following a failed/interrupted download, the diagnostic tool will not be able to identify the headlight hardware version to perform compatibility checks on the calibration selected for download.**
- **In this scenario the user will be responsible for identifying the Headlight hardware base part number and using the calibration help text to select the appropriate calibration.**

If the hardware version can be detected, the tool will check that the calibration selected is compatible.

- If the calibration is compatible, the download will start.
- If the calibration is not compatible the download will not start, and the message **“Selected calibration file not compatible – select compatible calibration”** will be displayed.



### Manual/Visual Identification of the Headlight ECM Hardware Version

In addition to the controls mentioned above, the headlight ECM hardware version can be manually identified.

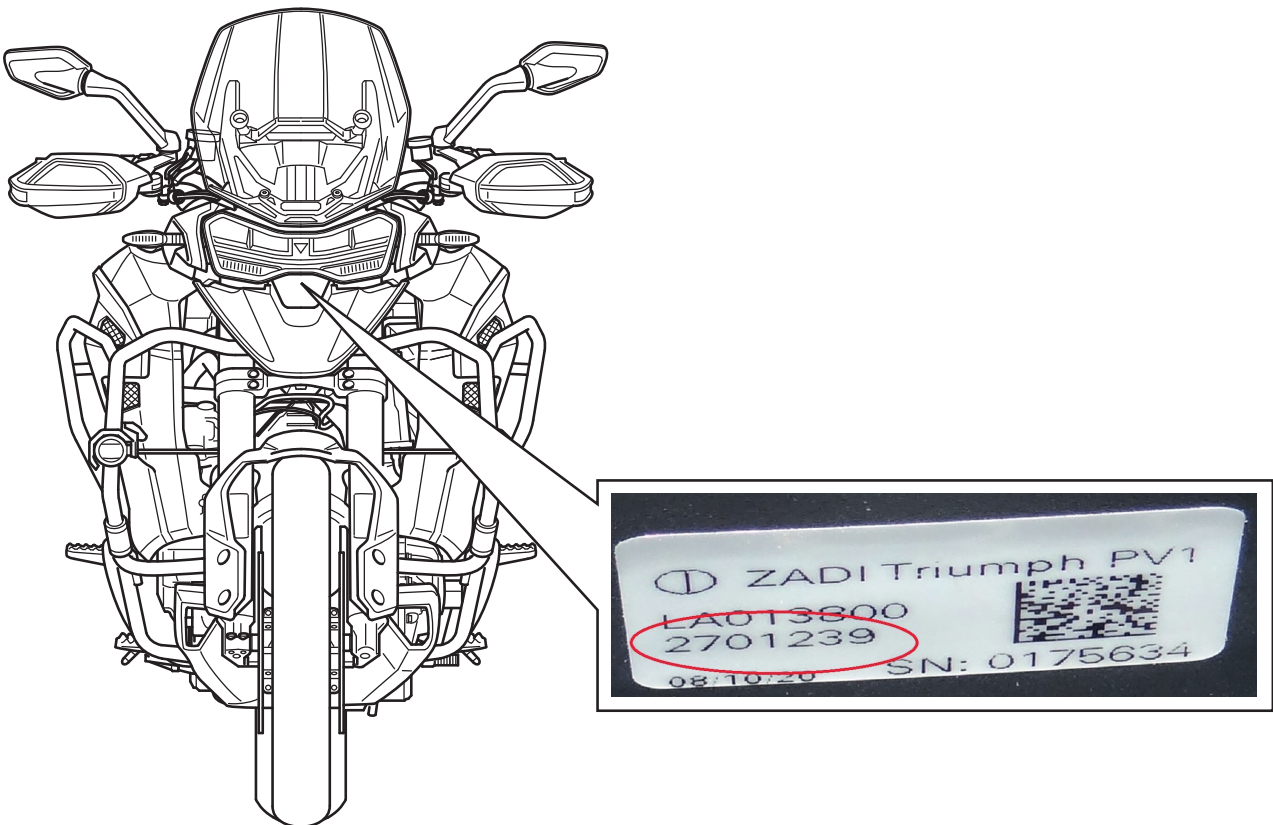
Headlight Hardware	Base Part Number
Original Hardware	2701239
New Hardware	2701440

The Headlight ECMs Triumph Base Part Number can be read in the following ways:

1. From the Headlight Build Data screen provided in the Headlight Diagnostics area of the diagnostic tool.

Build Data	Value
ECM Type	HL
VIN	SMTTAP23VUNA18049
Triumph Base Part Number	2701239
Serial Number	30303130303035303835
Application Software Part Number	02588021
Application Software Issue Level	010012
Boot Software Part Number	02588028
Boot Software Issue Level	03000028
Last Programming Date	Undefined
Tester Serial Number	Not Applicable
Calibration ID1	031402
Calibration ID2	030201

2. The Triumph base part number can also be viewed on a label located on the underside of the headlight unit. Removal of the headlight unit is not required to view this label. Look through the opening between the headlight unit and the upper mudguard.



To support calibration selection based on manual/visual identification, the headlight calibration descriptions for the above models have been updated to detail the headlight Triumph Base Part Numbers that they are suitable for.

**Tiger 1200 Models**

Model	Triumph Base Part Number	Calibration	Calibration description
Tiger 1200 GT	2701239	HEA00001	All markets unless a market specific calibration exists. Use with Headlight base part number 2701239.
		HEA00002	North America, Canada and China markets only. Use with Headlight base part number 2701239.
	2701440	HEA00011	All markets unless a market specific calibration exists. Use with Headlight base part number 2701440.
		HEA00012	North America, Canada and China markets only. Use with Headlight base part number 2701440.
Tiger 1200 Rally Pro	2701239	HEA00005	All markets unless a market specific calibration exists. Use with Headlight base part number 2701239.
		HEA00006	North America and Canada markets only. Use with Headlight base part number 2701239.
	2701440	HEA00015	All markets unless a market specific calibration exists. Use with Headlight base part number 2701440.
		HEA00016	North America and Canada markets only. Use with Headlight base part number 2701440.
Tiger 1200 GT Pro	2701239	HEA00003	All markets unless a market specific calibration exists. Use with Headlight base part number 2701239.
		HEA00004	North America, Canada and China markets only. Use with Headlight base part number 2701239.

Model	Triumph Base Part Number	Calibration	Calibration description
	2701440	HEA00013	All markets unless a market specific calibration exists. Use with Headlight base part number 2701440.
		HEA00014	North America, Canada and China markets only. Use with Headlight base part number 2701440.
Tiger 1200 Rally Explorer	2701239	HEA00009	All markets unless a market specific calibration exists. Use with Headlight base part number 2701239.
		HEA00010	North America, Canada and China markets only. Use with Headlight base part number 2701239.
	2701440	HEA00019	All markets unless a market specific calibration exists. Use with Headlight base part number 2701440.
		HEA00020	North America, Canada and China markets only. Use with Headlight base part number 2701440.
Tiger 1200 GT Explorer	2701239	HEA00007	All markets unless a market specific calibration exists. Use with Headlight base part number 2701239.
		HEA00008	North America, Canada and China markets only. Use with Headlight base part number 2701239.
	2701440	HEA00017	All markets unless a market specific calibration exists. Use with Headlight base part number 2701440.
		HEA00018	North America, Canada and China markets only. Use with Headlight base part number 2701440.

**Item:** 225.3

**Description:** Triumph Diagnostic Tool 2022-07 Update - Calibrations Removed From Service

**Model Affected:** See Item 3

Following a review of the calibration downloads contained in the Triumph Diagnostic Tool, we have identified that a number of market specific calibrations are no longer required. The affected calibrations will be removed from the diagnostic tool from the 2022-07 update onwards.

The calibrations that will be removed are detailed below, along with details of the "All markets unless a market specific calibration exists" calibrations which should now be used instead .

### Keyless ECM Calibrations

Model	VIN Range	Calibration removed	Market Affected	Use Calibration
Speed Triple RS	867601 onwards	IMM00021_JP	Japanese market only	IMM00020_ROW
Scrambler 1200 XC	918163 - AD7675	IMM00024_JP	Japanese market only	IMM00023_ROW
Scrambler 1200 XE	917747 - AB6805	IMM00027_JP	Japanese market only	IMM00026_ROW
Rocket 3 GT/ Rocket 3 GT Triple Black	971597 onwards	IMM00030_JP	Japanese market only	IMM00029_ROW
Rocket 3 R/Rocket 3 R Black	971477 onwards	IMM00033_JP	Japanese market only	IMM00032_ROW
Rocket 3 TFC	971688 onwards	IMM00036_JP	Japanese market only	IMM00035_ROW
Scrambler 1200 Bond Edition	All VINs	IMM00056_JP	Japanese market only	IMM00055_ROW
Speed Triple 1200 RS	All VINs	IMM00064_JP	Japanese market only	IMM00063_ROW
Scrambler 1200 XC	AE9098 onwards	IMM00067_JP	Japanese market only	IMM00066_ROW
Scrambler 1200 XE	AC8499 onwards	IMM00070_JP	Japanese market only	IMM00069_ROW
Speed Triple 1200 RR	All VINs	IMM00073_JP	Japanese market only	IMM00072_ROW
Tiger 1200 GT	All VINs	IMM00076_JP	Japanese market only	IMM00075_ROW
Tiger 1200 GT PRO	All VINs	IMM00079_JP	Japanese market only	IMM00078_ROW
Tiger 1200 Rally PRO	All VINs	IMM00082_JP	Japanese market only	IMM00081_ROW
Tiger 1200 GT Explorer	All VINs	IMM00085_JP	Japanese market only	IMM00084_ROW
Tiger 1200 Rally Explorer	All VINs	IMM00088_JP	Japanese market only	IMM00087_ROW

---

**Instrument Calibrations**

Model	VIN Range	Calibration removed	Market Affected	Use Calibration
Tiger 900	All VINs	INST00102	United Kingdom market only	INST00104
		INST00103	United States of America market only	
		INST00105	Japanese market only	
		INST00106	Canadian market only	

**Circulation**

Initial and date when read and return to central file holder

Service Manager	Parts Manager	Sales Manager	Workshop Supervisor	Technician 1	Technician 2