



GROUP	MODEL
ENG	Multiple Models Listed
NUMBER	DATE
237 (Rev 1, 09/16/2022)	July 2022

## TECHNICAL SERVICE BULLETIN

SUBJECT:

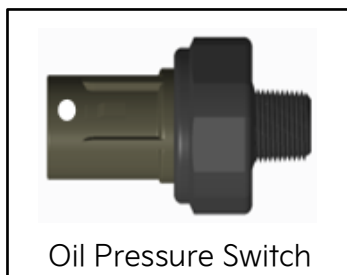
### OIL PRESSURE SWITCH (OPS) REPLACEMENT

#### NOTICE

**This bulletin has been revised to include additional information. New/revised sections of this bulletin are indicated by a black bar in the margin area.**

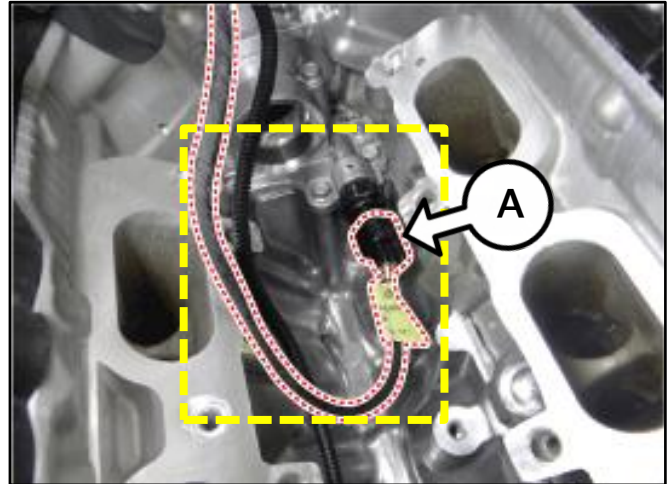
This bulletin provides information regarding the replacement of the Oil Pressure Switch associated with the 'Warranty Extension Program' (WTY026) on some 2014-2018MY vehicles listed in the table below, for repairs that may be necessary to address an Oil Pressure Switch leak in the eligible vehicles listed below from 10 years/100,000 miles to 15 years/150,000 miles, whichever comes first, starting from the date the vehicle was first put into service. This warranty extension is to address the Oil Pressure Switch leaking condition at no cost to the customers during this extended warranty period. Follow the procedure outlined in this publication to replace the OPS.

MY	Model	Engine	Production Date
2014-2015	Sorento (XMa)	LAMBDA 3.3L GDI	December 17, 2012 to December 11, 2014
2016-2018	Sorento (UMa)		October 27, 2014 to March 1, 2018
2014-2016	Cadenza (VG)		February 1, 2013 to January 7, 2016
2015-2018	Sedona (YP)		July 21, 2014 to December 6, 2017



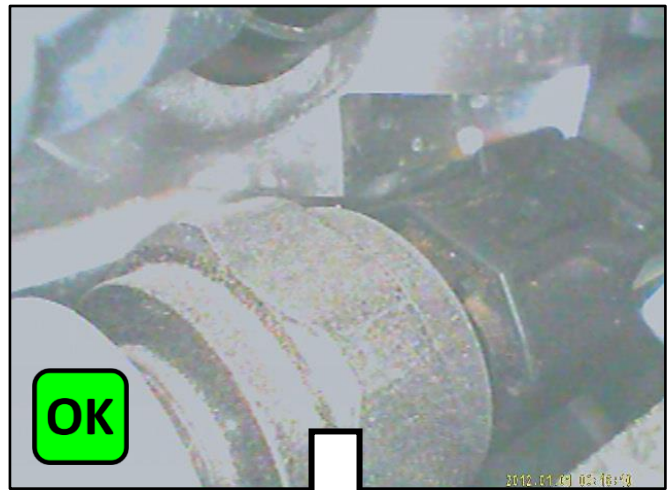
**Inspection Procedure:**

1. Open the hood and remove the engine cover.
2. Using a videoscope such as SST JSP97305 Snake Scope II or similar tool inspect the Oil Pressure Switch (OPS) (A) for oil leakage.

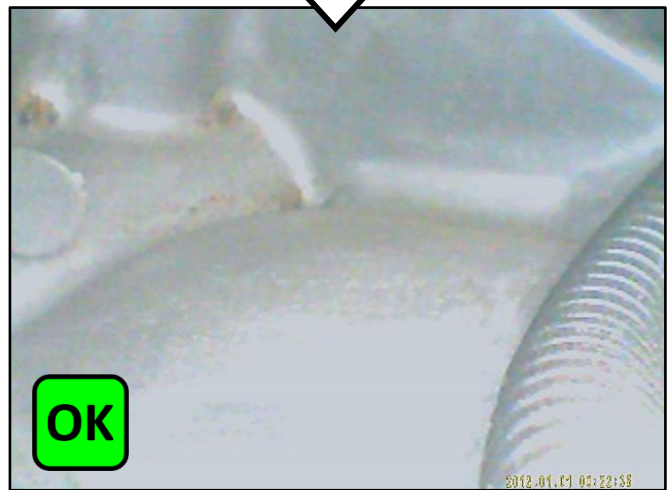


**Note:** Be sure to check the surrounding bottom and wall area of the engine block for oil leak traces.

- 3a. If oil leak is **not** present (OK), no further action is required.
- 3b. If oil leak is present (NG), proceed to the 'Replacement Procedure' on page 3 to replace the OPS with the new part.


 **TECH TIP**

**Dealer Technicians:** A leaking Oil Pressure Switch (OPS) may be misdiagnosed as a rear main oil seal leak due to the draining of oil from the center valley to the back of the engine and on to the transmission bellhousing. To avoid potential misdiagnosis, use a videoscope to identify where the oil leak is originating. It may take several minutes of idling the engine to determine the source of the leak.



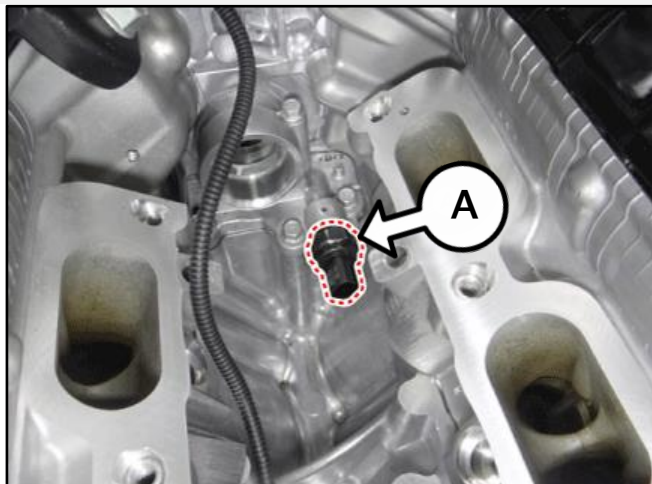
SUBJECT:

**OIL PRESSURE SWITCH (OPS) REPLACEMENT****Replacement Procedure:**

1. Replace the Oil Pressure Switch (OPS) by referring to "Engine Mechanical System → Lubrication System → Oil Pressure Switch → Repair procedures" in the applicable Shop Manual on KGIS.



Tightening torque for Oil Pressure Switch:  
10.8 - 15.9 lb.ft. (14.7 - 21.6 N.m)

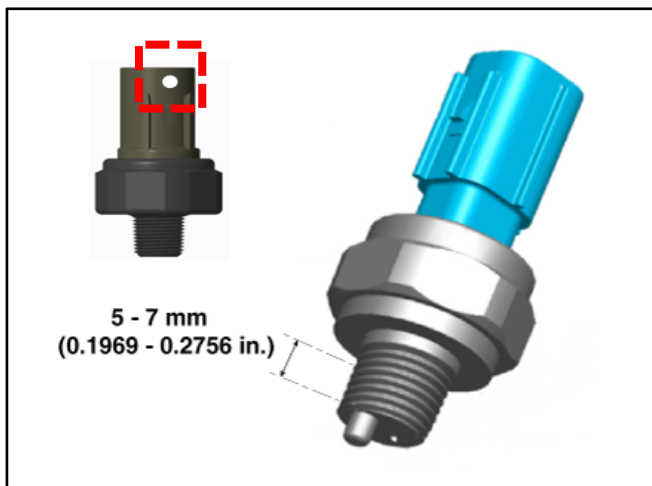
**CAUTION**

Take precautions to ensure no debris enters the cylinder head. It is recommended to cover all openings with a clean shop towel.

**NOTICE**

The new OPS may have a white marking as shown. Remove any debris and clean gasket surface prior to assembly.

**Note:** The threads on the new OPS are pre-coated with threadlocker.





2. Reinstall all removed parts in the reverse order of removal.
3. Clean any residual oil that may have leaked from the OPS.
4. Top off oil and coolant levels and confirm normal operation.

SUBJECT:

**OIL PRESSURE SWITCH (OPS) REPLACEMENT****AFFECTED VEHICLE RANGE:**

Model	Production Date Range
Sorento (XMa)	December 17, 2012 to December 11, 2014
Sorento (UMa)	October 27, 2014 to March 1, 2018
Cadenza (VG)	February 1, 2013 to January 7, 2016
Sedona (YP)	July 21, 2014 to December 6, 2017

**REQUIRED PART:**

Part Name	Part Number	Figure	Qty.
Oil Pressure Switch	94750 37100QQK		1
Synthetic Engine Oil	Refer to Warranty Bulletin 2022-07 for engine oil NPN		Charge quantity needed for "Oil Top Off"
Coolant (Pre-diluted, Pink)*	UM020 CH263	-	1 gallon
Coolant (Pre-diluted, Green)*	UM040 CH012	-	
Surge Tank Gasket	29215 3CFA1	Refer to EPC	1
Thermostat Housing Gasket	25651 3CAA0		
	25652 3CAA0		
High Pressure Fuel Pipe	35305 3C104		2
Water Center Pipe O-ring	25462 35504		
Intake Manifold Gasket	28215 3CFA0		6
Fuel Delivery Pipe Bolt	11403 08656K		
Injector Clip	35309 3C550		
Injector Tip Seal	35312 3C730		
Injector Bracket Washer	35313 3C200		
Upper O-ring	35312 3C700		
Backup O-ring	35312 3C710		

\*Top off with same color coolant currently in vehicle.

SUBJECT:

**OIL PRESSURE SWITCH (OPS) REPLACEMENT****WARRANTY INFORMATION:****N Code: E74 C Code: ZZ1**

Model	Claim Type	Causal P/N	Qty.	Repair Description	Labor Op Code	Op Time	Replacement P/N	Qty.
XMa, Uma	W	94750 37100	0	Oil Pressure Switch Leak Inspection	222A0310	0.3 M/H	N/A	0
VG, YP					22205310			
VG	W	94750 37100	0	Oil Pressure Switch (OPS) Replacement	222053R0	1.8 M/H	94750 37100QQK <b>and:</b> 29215 3CFA1 (1) 25651 3CAA0 (1) 25652 3CAA0 (1) 35305 3C104 (1) 25462 35504 (2) 28215 3CFA0 (6) 11403 08656K (6) 35309 3C550 (6) 35312 3C730 (6) 35313 3C200 (6) 35312 3C700 (6) 35312 3C710 (6) <b>and</b> UM020 CH263 <b>or</b> UM040 CH012	1
YP					222053R1	1.8 M/H		
UMa					222A03R0	1.6 M/H		
XMa					222A03R1	1.7 M/H		

