

# Corrosion on the Back Door Steel Reinforcement Panel Around the Opener Switch and Rear Camera

**Service Category** Vehicle Exterior

**Section** Door/Hatch

**Market** USA

Toyota Supports  
 ASE Certification 

## Applicability

YEAR(S)	MODEL(S)	ADDITIONAL INFORMATION
2017 - 2022	Prius Prime	

### REVISION NOTICE

**May 09, 2022 Rev2:**

- Applicability has been updated to include 2022 model year Prius Prime vehicles.
- The Introduction, Production Change Information, Warranty Information, Parts Information, and Repair Procedure sections have been updated.

**February 10, 2021 Rev1:**

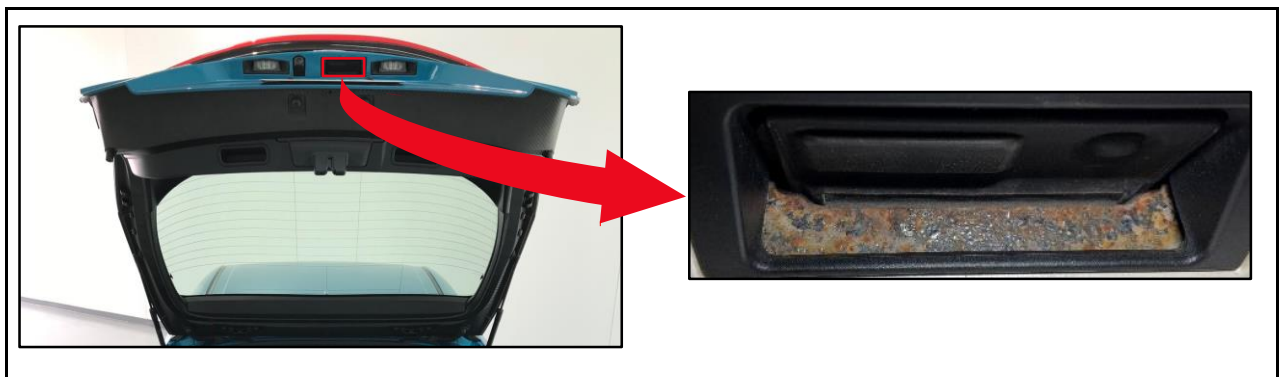
- Applicability has been updated to include 2019 – 2021 model year Prius Prime vehicles.
- The Introduction, Production Change Information, and Repair Procedure sections have been updated.

**Any previous printed versions of this bulletin should be discarded.**

## Introduction

Some 2017 – 2022 model year Prius Prime vehicles may exhibit corrosion on the back door steel reinforcement panel sub-assembly area visible below the opener switch and rear camera. Follow the Repair Procedure in this bulletin to address this condition.

**Figure 1.**



## Corrosion on the Back Door Steel Reinforcement Panel Around the Opener Switch and Rear Camera

### Production Change Information

This bulletin applies to vehicles produced **BEFORE** the Production Change Effective VIN shown below.

MODEL	MODEL YEAR	DRIVETRAIN	PRODUCTION CHANGE EFFECTIVE VIN
Prius Prime	2017 – 2022	FWD	JTDKAMFP#N3212470

### Warranty Information

OP CODE	DESCRIPTION	TIME	OFF	T1	T2
BD1905*	Inspect to Confirm Condition – Sublet Repairs to Body Shop	0.2	67005-47911	67	17
BD1906	Sand, Seal, and Refinish Back Door Opener Switch Reinforcement – In-dealer Repair	2.5			

\*Use sublet type "ZZ" for body shop repair amount.

#### APPLICABLE WARRANTY

- This repair is covered under the Toyota Basic Warranty. This warranty is in effect for 36 months or 36,000 miles, whichever occurs first, from the vehicle's in-service date.
- Warranty application is limited to occurrence of the specified condition described in this bulletin.
- In cases where perforation is found, the Toyota Corrosion Perforation coverage is in effect for 5 years from the vehicle's in-service date, regardless of the mileage. Unlike surface rust, rust perforation is consistent with a physical hole all the way through the sheet metal.

### Parts Information

PART NUMBER		PART NAME	QTY
PREVIOUS	NEW		
67005-47911	67005-47915	Panel Sub-assembly, Back Door	1
76835-47010	76835-47011	Protector, Back Door Finish Panel, No. 1	1

### Required Tools & Material

REQUIRED TOOLS & MATERIAL	QUANTITY
Sandpaper (80 – 180 grit)	1
Waterborne Cleaner	1
Two Part Epoxy Primer	1
Urethane Seam Sealer	1
Top Coat – Black Satin	1

## Corrosion on the Back Door Steel Reinforcement Panel Around the Opener Switch and Rear Camera

---

### Repair Procedure

1. Does the vehicle exhibit corrosion on the back door steel reinforcement panel sub-assembly area visible below the opener switch and/or rear camera?
  - **YES** — Continue to step 2.
  - **NO** — This bulletin does NOT apply. Continue diagnosis using the applicable Repair Manual.

#### NOTE

- If perforation is found, photo documentation is required to be attached to Warranty claim.
- Unlike surface rust, rust perforation is consistent with a physical hole all the way through the sheet metal.

2. Remove the rear deck trim cover, and then remove the back door opener switch and rear camera.

#### NOTE

- It is NOT necessary to remove the back door to complete this repair.
- The back door steel reinforcement panel sits between two CFRP (Carbon Fiber Reinforced Plastic) panels. The exterior CFRP panel is painted body color and the interior CFRP panel is black (NOT coated).

#### CAUTION

**Use proper Personal Protective Equipment (PPE) while performing this repair.**

Refer to TIS, applicable model and model year Repair Manual:

- [2017 – 2019](#) Prius Prime:  
*Vehicle Exterior – Door/Hatch – “Door / Hatch: Back Door: Disassembly”*
- [2020 / 2021 / 2022](#) Prius Prime:  
*Vehicle Exterior – Door/Hatch – “Door / Hatch: Back Door: Disassembly”*
- [2017 – 2022](#) Prius Prime:  
*Vehicle Exterior – Door/Hatch – “Door / Hatch: Back Door Opener Switch: Removal”*
- [2017 – 2022](#) Prius Prime:  
*Vehicle Exterior – Door/Hatch – “Park Assist / Monitoring: Television Camera: Removal”*

# Corrosion on the Back Door Steel Reinforcement Panel Around the Opener Switch and Rear Camera

## Repair Procedure (continued)

3. Prepare the back door steel reinforcement panel for refinishing. Use 80 – 180 grit sandpaper to remove rust from surfaces surrounding the opener switch and rear camera hole locations (Figure 2).

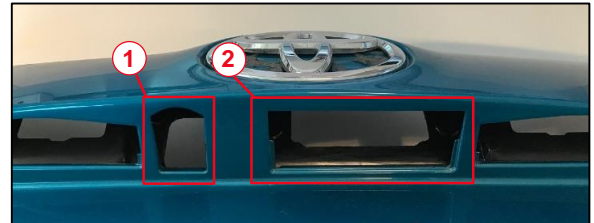
**NOTE**

To remove organic contaminants, use waterborne cleaner.

**NOTICE**

**Mask the painted surrounding area to prevent damage.**

Figure 2.



1	Rear Camera Hole
2	Back Door Opener Switch Hole

4. Apply two-part epoxy primer to the back door steel reinforcement panel areas prepared in the previous step.

**NOTE**

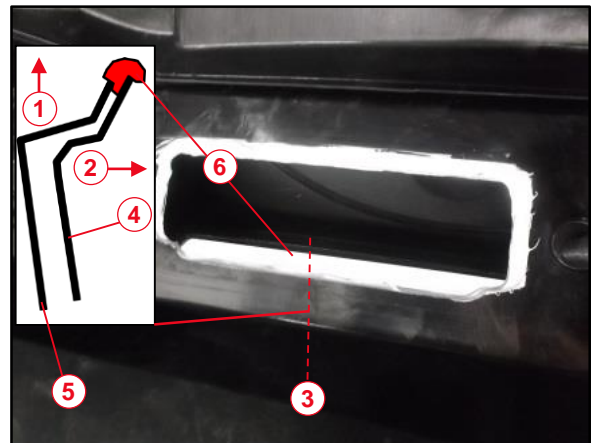
Allow to dry per the manufacturer's recommendations.

5. Seal the gap between the back door interior panel and steel reinforcement panel.
  - A. Use urethane seam sealer to fill the edge gap between the interior CFRP panel and the steel reinforcement panel (Figure 3) to prevent water entry between the two panels.
  - B. Allow the sealer to dry per the manufacturer's recommendations.

**NOTE**

To ensure proper fit of the back door opener switch and rear camera to the reinforcement panel when reassembling, the sealer should be no more than 1.5 mm thick.

Figure 3.



1	Up
2	Rear
3	Cross-section
4	Steel Reinforcement Panel
5	Interior Panel
6	Sealer ≤ 1.5 mm Thick

## Corrosion on the Back Door Steel Reinforcement Panel Around the Opener Switch and Rear Camera

### Repair Procedure (continued)

6. Apply two coats of black satin top coat to the visible area of the back door steel reinforcement panel surrounding the back door opener switch and rear camera holes and allow each coat to dry according to material manufacturer recommendation. The completed repair is illustrated in Figure 4 and Figure 5.

**NOTE**

Coat the visible portions of the back door steel reinforcement panel surrounding both the door opener switch and the rear camera.

**Figure 4.**



<b>1</b>	<b>Visible Back Door Steel Reinforcement Panel</b>
----------	--

**Figure 5.**



<b>1</b>	<b>Rear View of the Gap Between Interior CFRP and Steel Reinforcement Panel Filled With Sealer</b>
----------	--

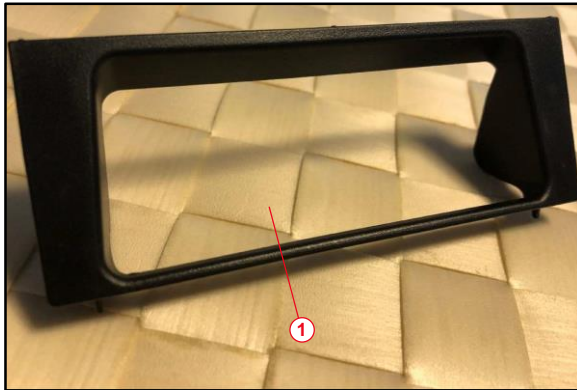
7. Reinstall the back door opener switch.  
Refer to TIS, applicable model and model year Repair Manual:
  - [2017 – 2022](#) Prius Prime:  
*Vehicle Exterior – Door/Hatch – “Door / Hatch: Back Door Opener Switch: Installation”*

## Corrosion on the Back Door Steel Reinforcement Panel Around the Opener Switch and Rear Camera

### Repair Procedure (continued)

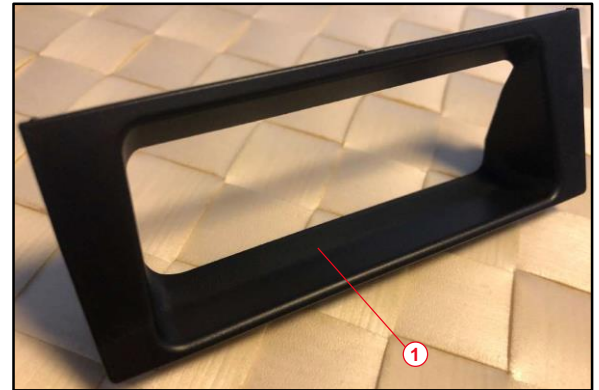
8. Reinstall the rear camera.  
Refer to TIS, applicable model and model year Repair Manual:
  - [2017 – 2022](#) Prius Prime:  
*Vehicle Exterior – Door/Hatch – “Park Assist / Monitoring: Television Camera: Installation”*
  
9. Reassemble the rear deck trim cover with the NEW back door finish panel protector No. 1.  
Refer to TIS, applicable model and model year Repair Manual:
  - [2017 – 2019](#) Prius Prime:  
*Vehicle Exterior – Door/Hatch – “Door / Hatch: Back Door: Reassembly”*
  - [2020 / 2021 / 2022](#) Prius Prime:  
*Vehicle Exterior – Door/Hatch – “Door / Hatch: Back Door: Reassembly”*
  
10. Ensure the NEW back door finish panel protector No. 1 has the extended portion as shown in Figure 7.

**Figure 6. Old Back Door Finish Panel Protector, No. 1**



<b>1</b>	<b>Original Cover-exposed Area of the Retainer Visible in This Area</b>
----------	---

**Figure 7. New Back Door Finish Panel Protector, No. 1**



<b>1</b>	<b>New Cover Has Extension Which Covers The Currently Exposed Area of the Retainer</b>
----------	--

11. Confirm the condition no longer exists.