

# Loose Panoramic Roof Garnish

**Service Category** Vehicle Exterior

**Section** Sliding Roof/Convertible

**Market** USA

Toyota Supports  
 ASE Certification 

## Applicability

YEAR(S)	MODEL(S)	ADDITIONAL INFORMATION
2018 - 2022	Camry, Camry HV	

### REVISION NOTICE

#### May 06, 2022 Rev2:

- Applicability has been updated to include 2020 – 2022 model year Camry and Camry Hybrid vehicles.
- The Production Change Information section has been updated.

#### August 02, 2019 Rev1:

- Applicability has been updated to include 2019 model year Camry and Camry Hybrid vehicles.
- Any previous printed versions of this bulletin should be discarded.

## Introduction

Some 2018 – 2022 model year Camry and Camry Hybrid vehicles with a panoramic roof may exhibit a gap between the interior center garnish panel and roof and/or an interior center garnish panel that is loose. Follow the Repair Procedure in this bulletin to address this condition.

## Loose Panoramic Roof Garnish

### Production Change Information

This bulletin applies to vehicles produced **BEFORE** the Production Change Effective VINs shown below.

MODEL	PLANT	LINE	DRIVETRAIN	ENGINE/BATTERY	PRODUCTION CHANGE EFFECTIVE VIN
Camry	TMMK	1	2WD	V6	4T1FZ1AK#NU067805
			AWD	4 Cyl	4T1F11AK#NU042229
		2	FWD		4T1F11BK#NU063464
					4T1F11AK#NU683868
Camry HV	TMMK	1	HV	Li-Ion	4T1C31AK#NU039496
				NiMH	4T1B21HK#NU017512
		2		Li-Ion	4T1F31AK#NU588560

### Warranty Information

OP CODE	DESCRIPTION	TIME	OFF	T1	T2
BD1813	R & R Interior Center Garnish Panel	0.5	63219-06020	62	99

#### APPLICABLE WARRANTY

- This repair is covered under the Toyota Basic Warranty. This warranty is in effect for 36 months or 36,000 miles, whichever occurs first, from the vehicle's in-service date.
- Warranty application is limited to occurrence of the specified condition described in this bulletin.

### Parts Information

PART NUMBER	PART NAME	QTY
63219-06020	Garnish, Sliding Roof, Rr	1

## Loose Panoramic Roof Garnish

---

### Required Tools & Equipment

REQUIRED TOOLS & MATERIAL	PART NUMBER	QTY
3M™ Adhesive Kit	000-88-2018*	1
Isopropyl Alcohol or Equivalent Degreasing Agent	—	As Needed

\* Order Through 3M™ at 310-323-1104 or [generalmailbox@cpdoesadhesivesandtapes.com](mailto:generalmailbox@cpdoesadhesivesandtapes.com).

3M™ ADHESIVE KIT CONTENTS	QTY
3M™ 94 Primer (P/N 94)	5 Tubes
3M™ Dual Lock™ Self-adhering Fastener (P/N SJ3758)	10 Pieces (1/2 in. x 7.5 in. each)
Material Safety Data Sheet (MSDS)	1

**NOTE**

One 3M™ Adhesive Kit can repair approximately five vehicles.

### Repair Procedure

1. Visually inspect the vehicle to confirm the condition exists.  
Is the center garnish loose/falling down?
  - **YES** — Continue to step 2.
  - **NO** — This bulletin does NOT apply. Continue diagnosis using the applicable Repair Manual.

## Loose Panoramic Roof Garnish

---

### Repair Procedure (continued)

2. Remove the center frame garnish.
  - A. Using the overhead console switch, open the panoramic roof to full open position.
  - B. Remove the left-hand and right-hand front rail garnishes.

**NOTE**

Removal of the side garnish will assist with the center garnish removal and installation steps.

**Figure 1. Side Garnish**

- C. Remove the original rear garnish from the vehicle through the panoramic roof opening.

**NOTICE**

**Garnish removal through the panoramic roof opening may prevent headliner damage.**

**NOTE**

The original rear garnish will NOT be reused.

Refer to the video link below for garnish removal.

[Garnish Removal](#)

## Loose Panoramic Roof Garnish

---

### Repair Procedure (continued)

3. Clean and degrease the cross brace.
  - A. Remove ALL remnants of 3M™ Dual Lock™ tape residue from the center of the cross brace.
  - B. Remove ALL remnants of dual-sided tape residue from the outer ends of the cross brace.
  - C. After ALL tape pieces are removed, the cross brace MUST be degreased.
  - D. Dampen a clean cloth with isopropyl alcohol (IPA) or an equivalent degreasing agent.
  - E. Thoroughly clean the surface of the cross brace to remove ALL traces of adhesive residue and oil.
  - F. After cleaning, allow the cross brace to dry for AT LEAST 5 minutes BEFORE proceeding to step 4.
  
4. Apply the 3M™ 94 primer.
  - A. Follow the instructions on the ampule to apply the primer to the cross brace between the garnish boss holes as shown.

**Figure 2.**



**NOTICE**

- Apply **ONLY** one coat of primer.
- Additional coats of primer will reduce adhesion capability.

- B. Allow the primer to dry for AT LEAST 5 minutes.

**NOTICE**

Allow the primer to dry for a **MINIMUM** of 5 minutes and a **MAXIMUM** of 10 minutes **BEFORE** continuing to step 5.

## Loose Panoramic Roof Garnish

---

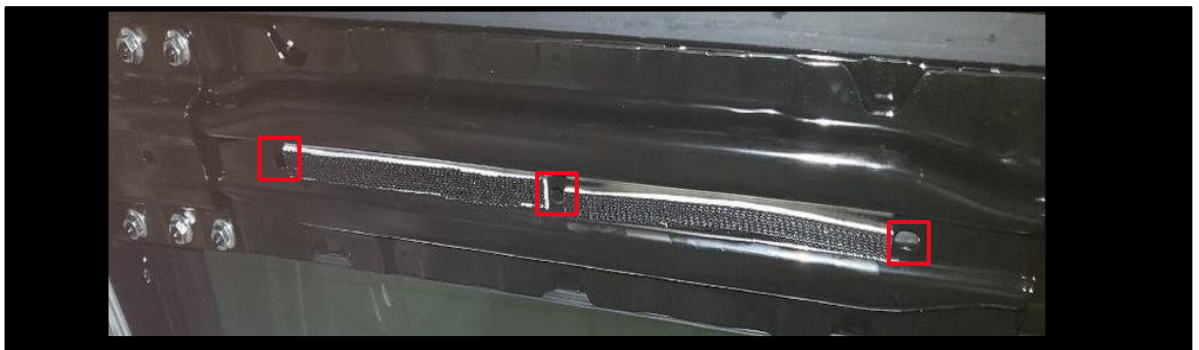
### Repair Procedure (continued)

5. Apply the 3M™ Dual Lock™ strips.
  - A. Remove the backing paper from each 3M™ Dual Lock™ strip and apply them to the cross brace in the same locations as the primer application.

**NOTICE**

**Make sure to keep the cross brace holes clear during 3M™ Dual Lock™ strip application.**

**Figure 3. Cross Brace Holes**



- B. Apply pressure to the strips for 20 seconds AFTER installation.
6. Install the NEW center frame garnish.

**NOTICE**

**Install the NEW garnish through the panoramic roof opening to avoid headliner damage.**

Refer to the video links below for exterior and interior garnish installation.

[Exterior](#) / [Interior](#) garnish installation

- A. Remove the backing paper from the six pieces of double-sided tape (3LH/3RH).
- B. Ensure correct orientation of the garnish.

**NOTE**

The rubber trim goes to the rear of the vehicle.

- C. Align the pins of the garnish to the holes in the roof cross brace.
  - D. Apply upward pressure on the garnish to seat the double-sided tape and connect the 3M™ Dual Lock™ on the garnish and roof brace.
  - E. Apply pressure to the garnish for AT LEAST 20 seconds to ensure good adhesion.
  - F. Clean the surface of the garnish with a clean, dry cloth.
  - G. Visually confirm the fitting of the garnish to the headlining assembly.

## Loose Panoramic Roof Garnish

---

### Repair Procedure (continued)

7. Reinstall the left-hand and right-hand front rail garnishes.
  
8. Using the overhead console switch, completely close the panoramic roof panel.
  
9. Visually confirm the overall condition of the headlining and center garnish.