

September 2, 2022

Version 1

Product Update: Blower Motor Inspection

AFFECTED VEHICLES

Year	Model	Trim	VIN Range
2022	Passport	ALL	Check the iN VIN status for eligibility.
2022	Pilot	ALL	Check the iN VIN status for eligibility.
2022	Ridgeline	ALL	Check the iN VIN status for eligibility.

BACKGROUND

During the manufacturing process, the cover cap for the front blower motor may have been partially blocked. If this occurs, airflow may be restricted to the motor, which may cause the motor to overheat.

CUSTOMER NOTIFICATION

Owners of affected vehicles will be sent a notification of this campaign.

Do an iN VIN status inquiry to make sure the vehicle is shown as eligible.

Some vehicles affected by this campaign may be in your new or used vehicle inventory. Repair these vehicles before they are sold.

CORRECTIVE ACTION

Inspect the blower motor cover cap. Replace the blower motor and cap if needed.

TOOLS INFORMATION

Part Name	Part Number	Quantity
Blower Cover Hole Gauge	07AAJ-TZ5A100	1

PARTS INFORMATION

Part Name	Part Number	Quantity
Front Blower Motor Sub-Assembly	79307-TZ5-A61	1

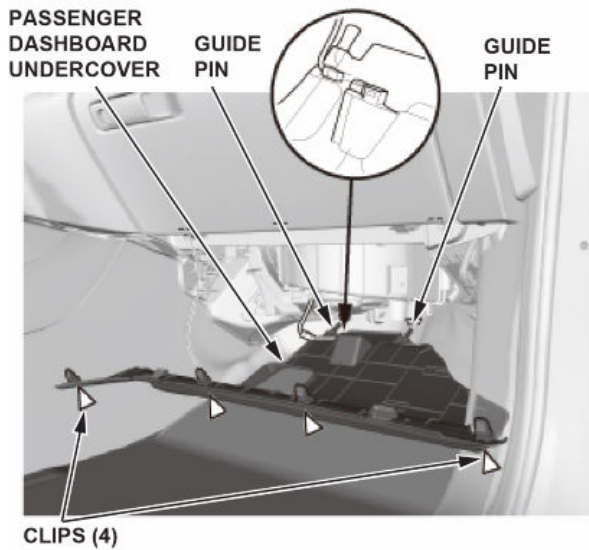
CUSTOMER INFORMATION: The information in this bulletin is intended for use only by skilled technicians who have the proper tools, equipment, and training to correctly and safely maintain your vehicle. These procedures should not be attempted by "do-it-yourselfers," and you should not assume this bulletin applies to your vehicle, or that your vehicle has the condition described. To determine whether this information applies, contact an authorized Honda automobile dealer.

WARRANTY CLAIM INFORMATION

Operation Number	Description	Flat Rate Time	Defect Code	Symptom Code	Template ID	Failed Part Number
6125A0	Inspect the blower motor cover cap.	0.3 hr	6BN00	SCE00	A22023A	79307-TZ5-A61
6121D6	Replace the blower motor and cover cap (includes inspection).	0.4 hr	6BN00	SCE00	A22023B	79307-TZ5-A61

INSPECTION PROCEDURE

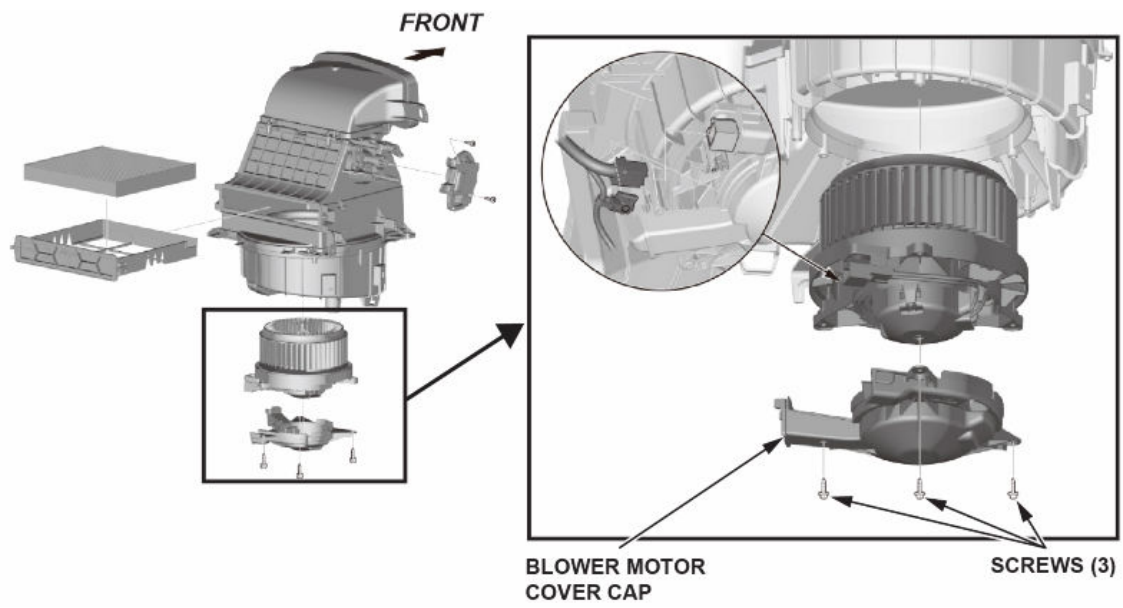
1. Remove the passenger dashboard undercover.



2. Disconnect the connector (if applicable).



3. Remove the front blower motor cover screws (3).



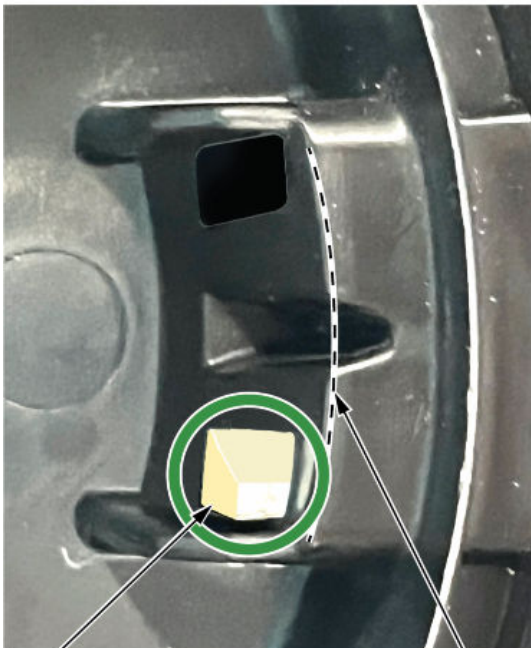
4. Install the left and right side inspection tool one at a time into the air duct passage as shown.
- If the inspection tool goes through the opening without forcing it through, install the blower motor cover, no further action is required.
 - If the inspection tool does not go through the opening, **Do Not force it through**, go to the Repair Procedure and replace the blower motor and blower motor cover cap.

SIDE VIEW

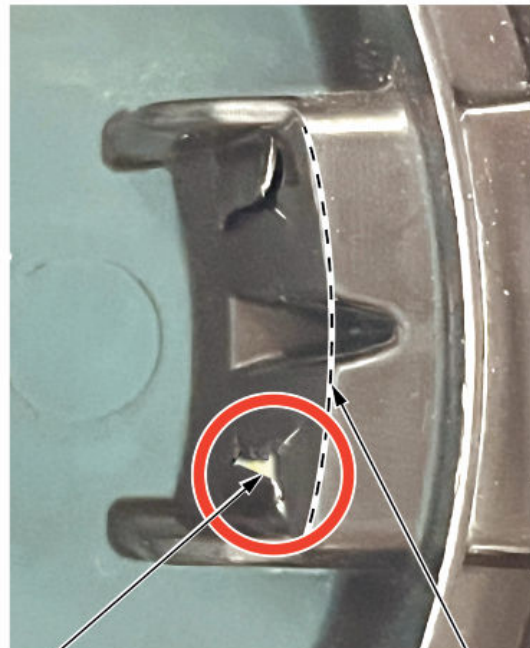


END VIEW

PLATE
Limits side movement and wrong hole insertion.



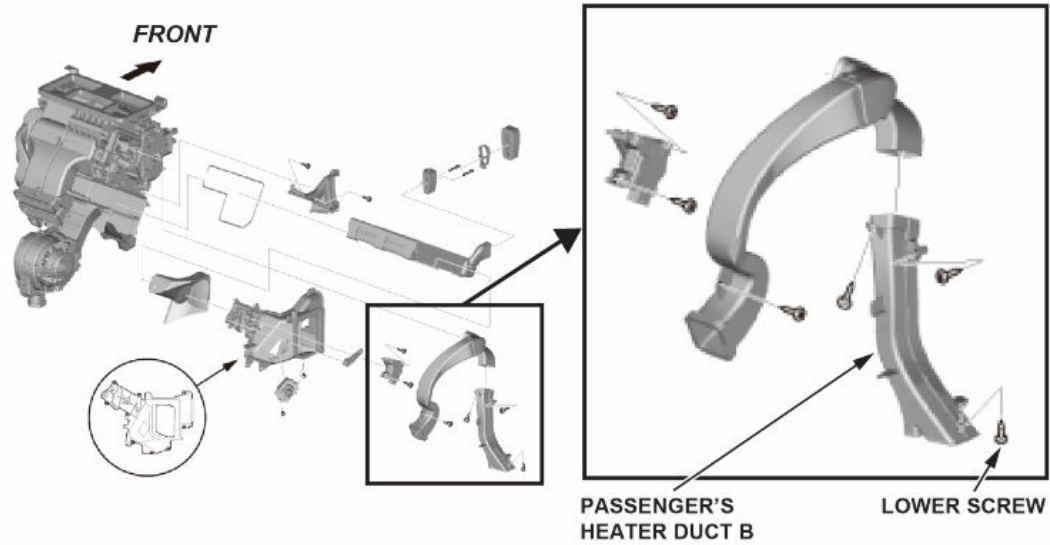
GAUGE
Must clear part edge.



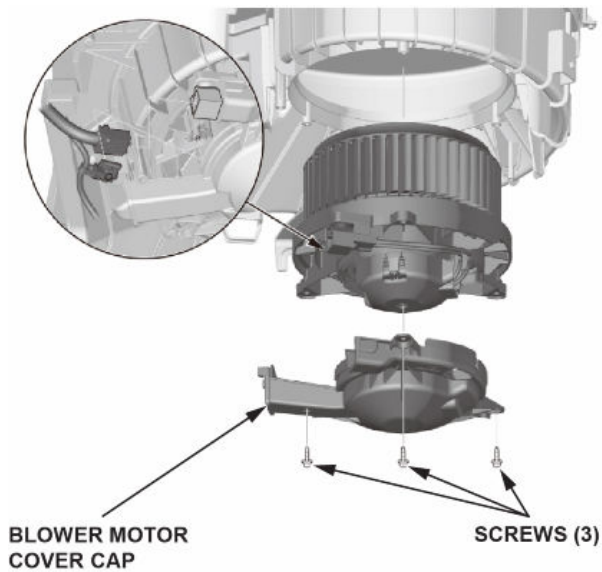
GAUGE
Does not extend past part edge.
(Do not force it through)

REPAIR PROCEDURE

1. Remove the lower screw for passenger's heater duct B.



2. Push the passenger's heater duct B to give clearance for the blower motor to be removed and disconnect the motor connector.



3. Replace with new blower motor and cover cap, then torque the screws to **(14-16 in-lbs)**.
4. Connect the connectors, then install all removed parts in the reverse order of removal.

5. Turn the fan on to confirm that the blower motor works properly.



END