



Service Bulletin

Bulletin No.: 21-NA-186

Date: September, 2022

TECHNICAL

Subject: Service Engine Soon Illuminated in Driver Information Center (DIC) and/or a Malfunctioning Fuel Gauge, DTC U0076/U18A2/P1001/P1434 or Other Message Counter Incorrect Codes Set

Brand:	Model:	Model Year:		VIN:		Engine:	Transmission:
		from	to	from	to		
Chevrolet	Malibu	2020	2022	—	—	1.5L (LFV)	—

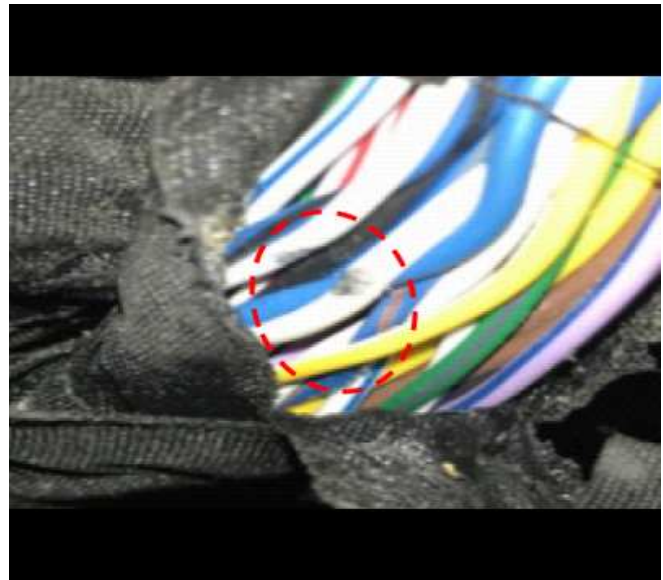
Involved Region or Country	North America, Israel, Palestine
Condition	Some customers may comment on a Service Engine Soon (SES) light and/or a malfunctioning fuel gauge. Technicians may find U0076/U18A2/P1001/P1434 or other Message Counter Incorrect codes set current or in recent history.
Cause	The cause of the condition may be the wire harness at the Engine Control Module (ECM) is chafing against the ECM bracket.
Correction	Repair the wire(s) and secure the wire harness.

Service Procedure



5890376

1. Locate the ECM harness (1) in the engine compartment near the battery. Refer to *Engine Control Module Replacement* in SI.



5890381

- 2. Inspect the ECM wire harness for any chafing. Repair any damaged wires. Refer to *Wire to Wire Repair* in SI.
- 3. Wrap the wire harness with anti-abrasion tape to prevent more chafing and re-secure the harness.

Warranty Information

For vehicles repaired under warranty, use:

Labor Operation	Description	Labor Time
5430902	Wire-to-Wire Repair	Use Published Labor Operation Time

Version	2
Modified	Released August 16, 2021 Revised August 26, 2022 – Added the 2022 Model Year.

