



Service Bulletin


Bulletin No.: 17-NA-050

Date: August, 2022

INFORMATION

Subject: Information on Mimamori ECU Download (Health Report)

Brand:	Model:	Model Year:		VIN:		Engine:	Transmission:
		from	to	from	to		
Chevrolet	3500HD Medium Duty (LCF)	2016	2017	—	—	I23	—
	4500/4500XD Medium Duty (LCF)	2017	2023			I1B	
	5500/5500XD Medium Duty (LCF)						
	6500XD Medium Duty (LCF)	2018					

Involved Region or Country	United States
Information	<p>Important: Perform the Mimamori ECU download before clearing the DTC and before diagnosing the vehicle.</p> <p>In an effort for continuous improvement, there is a need to obtain Mimamori ECU (Health Report) information. It is critical to obtain Mimamori ECU information during the repair process. This information will be used to help determine "root cause" for customer's concerns and develop/validate a field fix.</p> <div style="text-align: center;">  </div> <p style="text-align: right;">4846261</p> <p>When a vehicle is presented to a dealer for repair and a DTC is stored in one or more of the control modules listed below, GM requests the Mimamori ECU information be downloaded and synchronized using the EL-52244 cable.</p> <p>Note: Refer to Warranty Information in this bulletin for the labor operation code when performing the following scan of the modules.</p> <ul style="list-style-type: none"> • Validate the information is synchronized before claim submission. All claims will be reviewed for this data. <ul style="list-style-type: none"> ⇒ Engine Control Module (ECM) ⇒ Transmission Control Module (TCM) ⇒ Diesel Exhaust Fluid (DEF) Control Module

Note: When replacing the engine or transmission, the Mimamori ECU report labor is already incorporated into the repair and the labor operation mentioned in this bulletin should not be used.

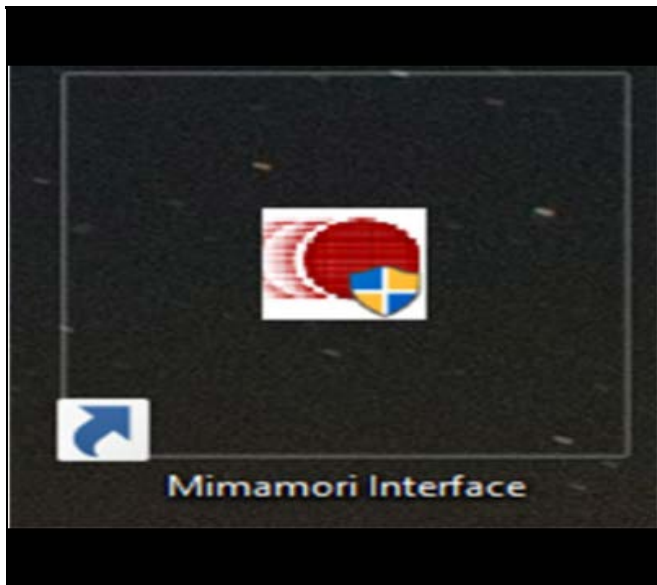
- Perform the Mimamori download when replacing the following;
 - ⇒ Engine repairs/replacements
 - ⇒ Transmission repairs/replacements

Creating A MMU Report



4969575

1. Without GDS running, connect the MDI to the DLC and laptop.
2. Connect the MMU cable EL- 52244 to the MMU port and a USB cable on the laptop.



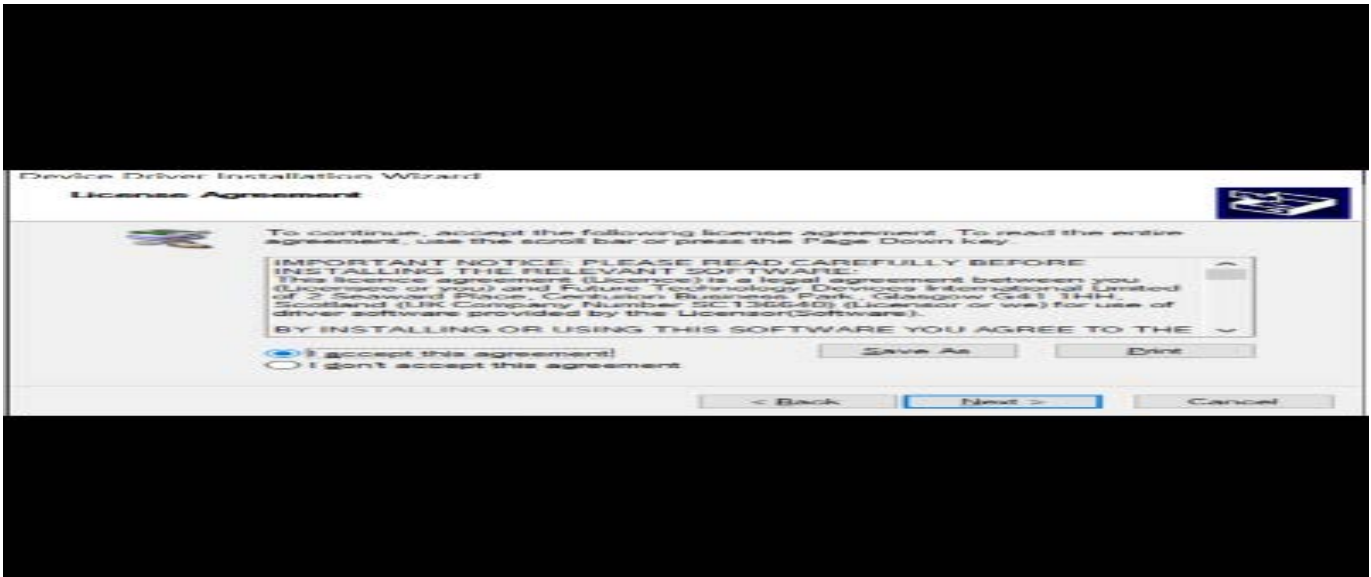
6142839

3. Select LFC Data Capture.



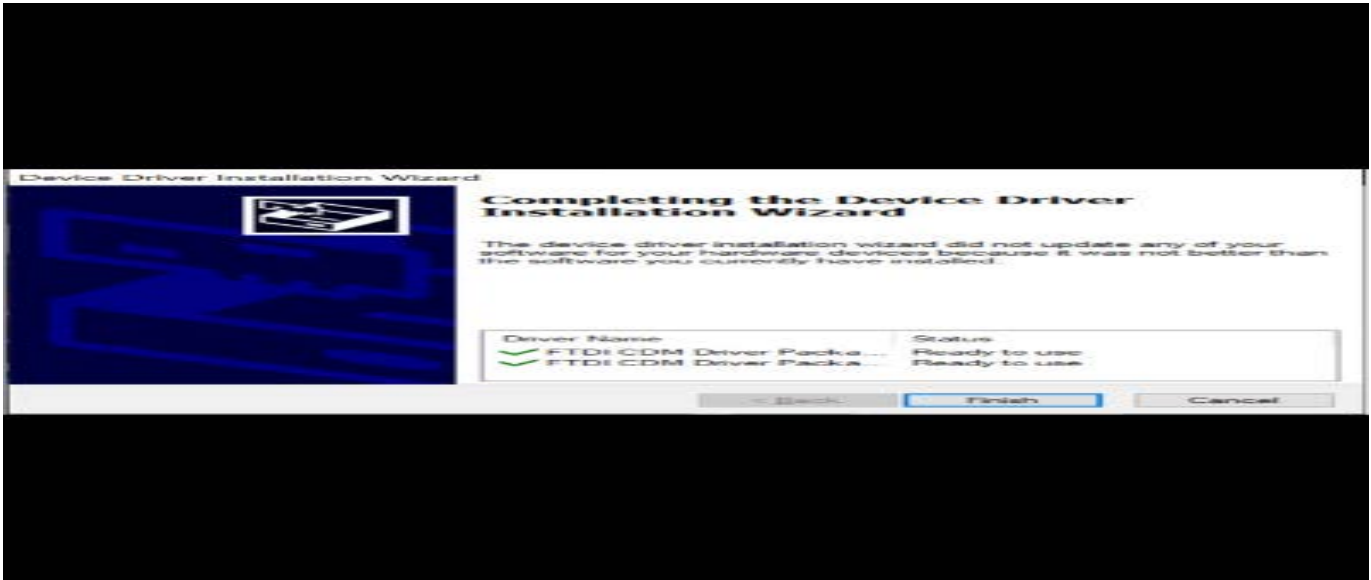
6143001

4. Select Mimamori ECU Download.



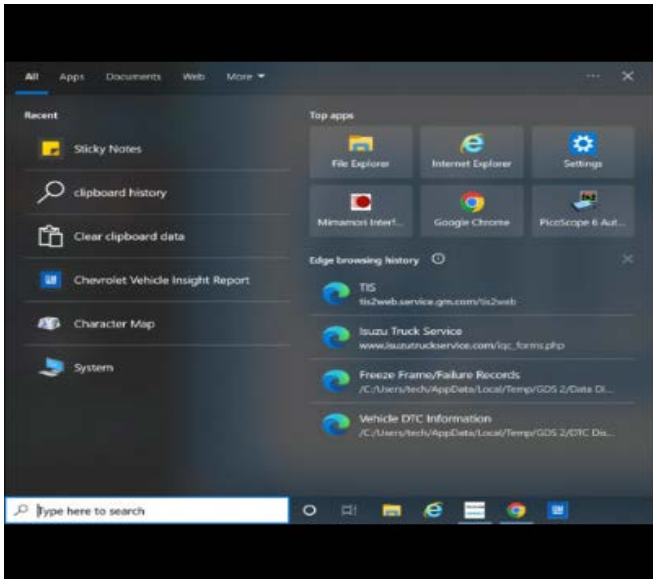
6143003

5. Follow the direction on the screen.



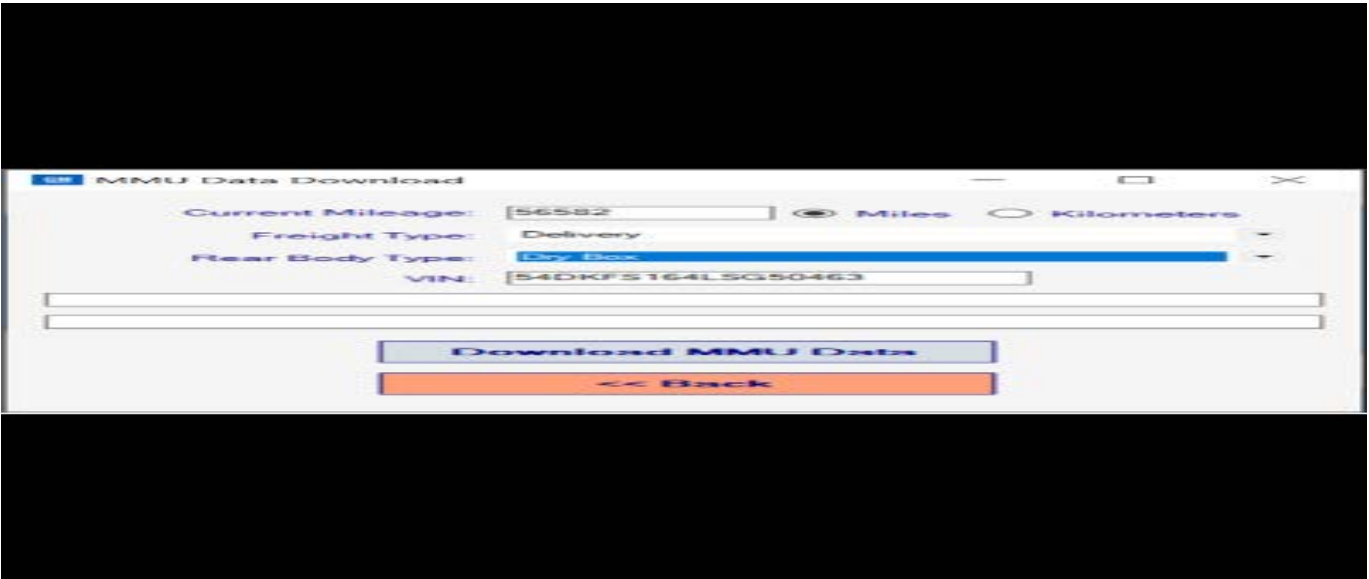
6143021

6. Select Run.



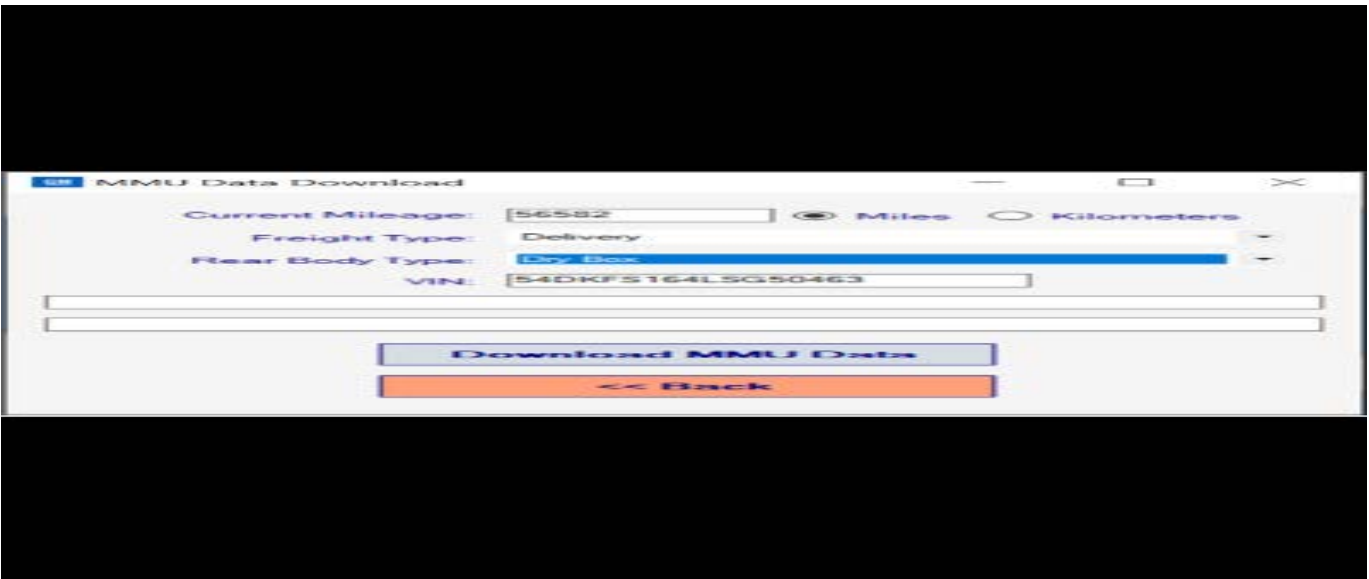
6143037

- 7. Select J2534 Device.
- 8. Choose the device from the drop down box.



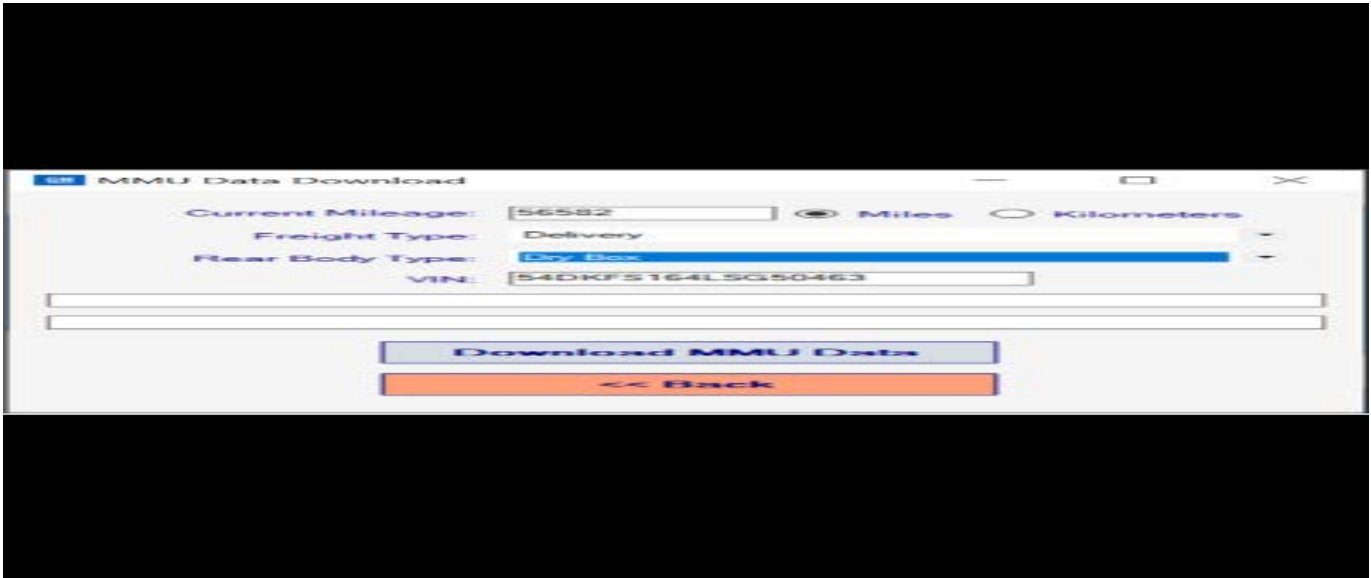
6143042

- 9. Select the MMU Data Download.



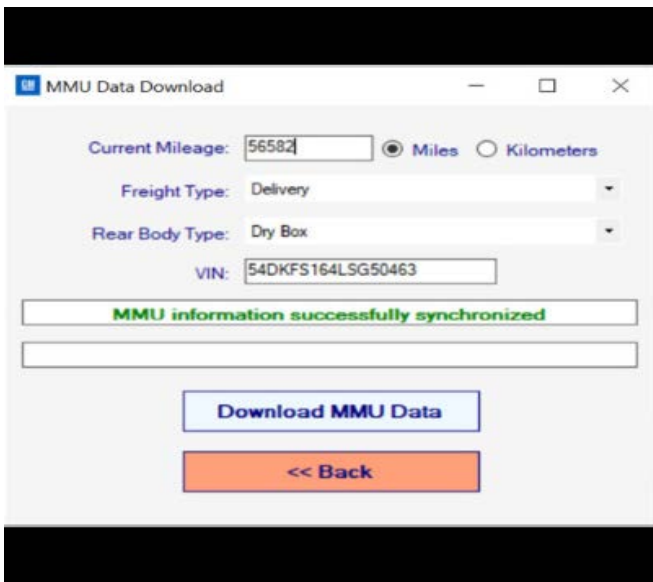
6143042

10. Enter the information as needed in the Box.



6143042

- When the blue light starts flashing, the download bar will start counting.



6143048

When the report has completed downloading, the blue light will stop flashing and a message will show that the MMU information has successfully uploaded.

Parts Information

No parts are required for this repair.

Warranty Information

Labor Operation	Description	Labor Time
T0803	DRM Download and Sync	Use Published Labor Operation Time

Version	7
Modified	<p>Released February 23, 2017</p> <p>Revised August 2, 2017 - Removed the 3500/4500 model row, updated 4500 and 5500 Model Years to 2018 and added a graphic.</p> <p>Revised January 12, 2018 - Add 6500XD to Model section.</p> <p>Revised February 15, 2018 - Added Creating a MMU Report section.</p> <p>Revised October 15, 2019 - Added 2019 and 2020 Model Years</p> <p>Revised December 22, 2021 – Revised to add 2021-2022 Model Years.</p> <p>Revised August 22, 2022 – Added the 2023 Model Year and updated graphics from step 3 on.</p>

Additional SI Keywords: MMU

