



# QUALITY ACTION

## CAMPAIGN BULLETIN Fuel Tank Dealer Inventory

Reference: PC903  
Date: August 18, 2022

**Attention: Dealer Principal, Sales, Service & Parts Managers**

Affected Models/Years:	Affected Population:	Dealer Inventory:	SERVICE COMM Activation date:	Stop Sale In Effect:
MY2022 Rogue (T33)	NA	<b>196</b>	July 30, 2022	<b>YES</b>

**\*\*\*\*\*Dealer Announcement\*\*\*\*\***

Nissan is now escalating the temporary Quality Assurance (QA) Hold on **196** specific model year 2022 Nissan Rogue vehicles in Service Comm to a dealer inventory quality action to inspect, and if necessary, replace the fuel tank. Nissan is continuing its investigation of a potential fuel tank puncture.

Affected vehicles are subject to stop sale and are either currently in dealer inventory or assigned and in transit to the dealer.

**\*\*\*\*\*What Dealers Should Do\*\*\*\*\***

- Verify if vehicles are affected by this quality hold using Service Comm or DBS National Service History – Open Campaigns I.D. **PC903**
  - New vehicles in dealer inventory can also be identified using DBS (Sales-> Vehicle Inventory, and filter by Open Campaign).
    - Refer to NPSB 15-460 for additional information
  - Some vehicles may still be in transit. Please continue to check newly arriving inventory for QA Hold applicability.**
- Please **do not drive, loan, rent, sell or trade** the specific vehicles in dealer inventory subject to this quality hold.
- Use the attached procedure to inspect and, if necessary, remedy any vehicles affected by this quality action:
  - If parts are needed, dealers may place an order via the normal process.
- URGENT:** The service department should submit the applicable warranty claim for the action performed as soon as the action is completed so it can be closed on Service Comm, and release the vehicle.
- NOTE:** Parts replaced under this quality action will be collected through the Nissan Part Return Program to help with Nissan’s continued investigation. If a Part Return Required Notification is received by the dealer, it is important for dealers to return parts applicable specifically to the VIN and repair order identified.

**NISSAN NORTH AMERICA, INC.**  
Total Customer Satisfaction



## PC903 – 2022 ROGUE FUEL TANK INSPECTION

### INSPECTION PROCEDURE:

#### **⚠ WARNING**

To avoid the risk of death or severe personal injury when inspecting and replacing fuel line parts, be sure to observe the following:

- Put a “WARNING: FLAMMABLE” sign in the workshop.
- Be sure to work in a well-ventilated area and furnish workshop with a CO2 fire extinguisher.
- Never smoke while servicing the fuel system.
- Keep open flames, sparks and other ignition sources away from the work area.
- Never bend or twist tubes when they are being installed.
- After installing tubes, check that there is no fuel leakage at connections in the following steps.
  - 1) Apply fuel pressure to fuel lines by turning the ignition switch “ON” (with engine stopped). Then check for fuel leakage at connections.
  - 2) Start the engine, increase rpm and check for fuel leakage at connections.

#### **⚠ CAUTION**

To avoid the risk of minor personal injury or property damage when inspecting and replacing fuel line parts, be sure to observe the following:

- Perform the operation with vehicle on level ground.
- Disconnect the quick connector when the tabs are completely depressed.

1. Place the vehicle on a suitable lift and raise it up (Figure 1).



Figure 1

2. Find the front left corner of the fuel tank (Figure 2).

- Located under the vehicle just ahead of the left rear wheel/tire assembly (Figure 3).



Figure 2

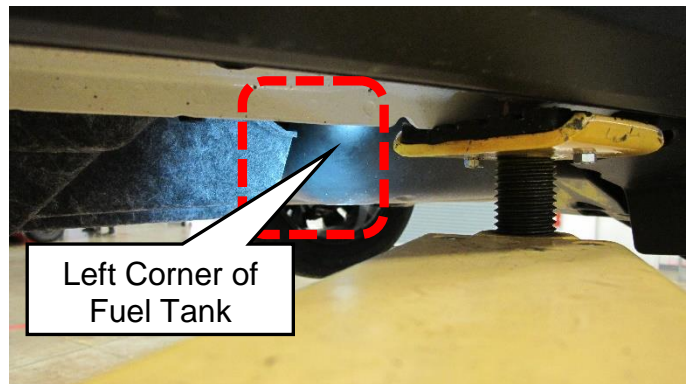


Figure 3

- Using a light source, find the area to be inspected on the top left front corner of the fuel tank (Figure 4).



Figure 4

- Inspect the top left front corner of the fuel tank for a hole or any drill bit scratches/scuffing. See Figures 5 and 6 for reference.

**HINT:** Use your hand to feel for scratching or scuffing on the fuel tank. The fuel tank should be smooth to the touch in the inspection area.

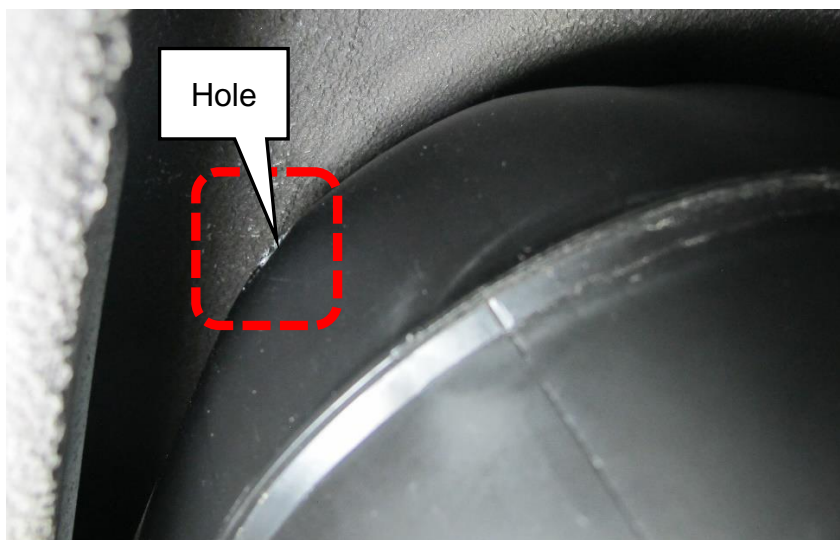


Figure 5

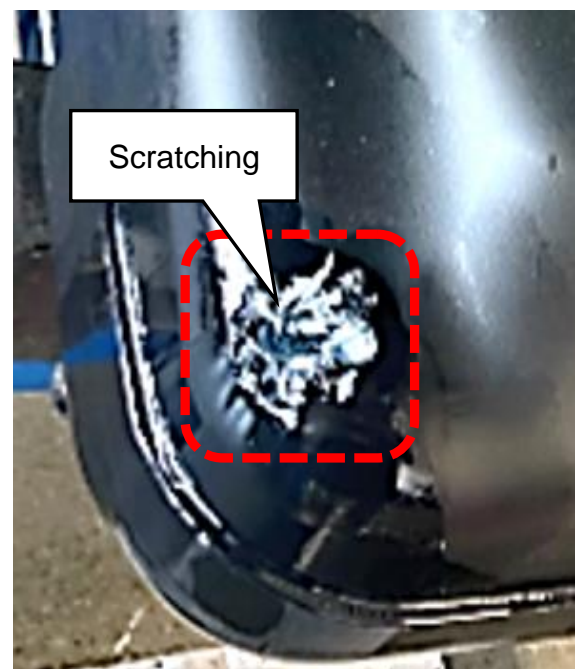


Figure 6

5. Did the fuel tank inspection in Step 4 reveal a hole or any scratching/scuffing on the top left corner of the fuel tank?
  - **NO > GOOD**; No repair is needed, lower the vehicle and remove from the lift. Refer to Claims Information to Submit claim for Op Code PC9030.
  - **YES > NO GOOD**; Proceed to Step 6 to replace the fuel tank.

**PARTITION REMOVAL:**

6. Lower the lift to the floor allowing access to the vehicle.

7. Open both rear doors and the back door (Figure 7).



Figure 7

8. If present, remove the cardboard box labeled, "Stowed Items" (Figure 8).

**IMPORTANT: Do not open the cardboard box, it has a tamper proof seal.**

- Secure the cardboard box in a safe place, it will be placed back in the vehicle.



Figure 8



9. Remove the support arm to partition mount bolts/washers and nuts from both sides (Figures 9 and 10).

- Secure the bolts/washers and nuts in a safe place, they will be reused later

**HINTS:**

- The bolt and nut size is standard 1/2 inch.
- The nut on the backside will need to be held with a wrench while the bolt is removed.

10. Move to the rear of the vehicle and remove the luggage board.

- Lift the rear up and pull out toward the rear of the vehicle (Figure 11)

**Left Side**

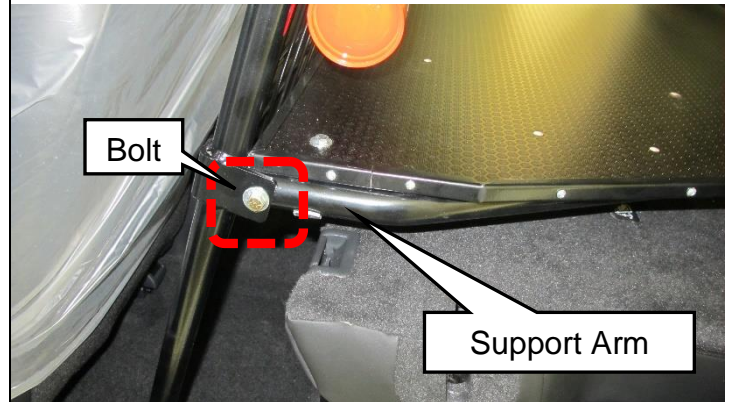


Figure 9

**Right Side**

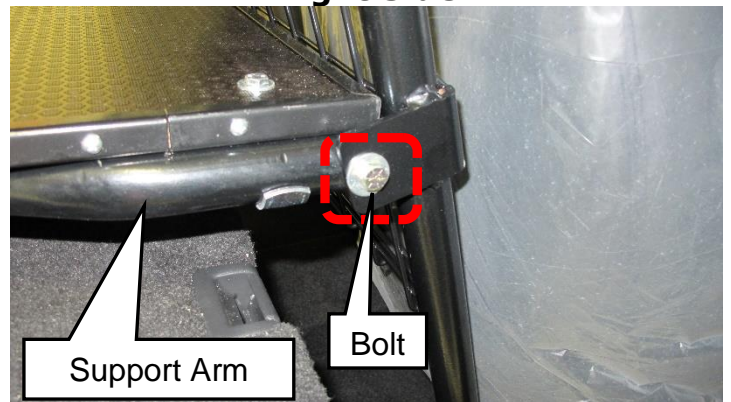


Figure 10

**Luggage Board**

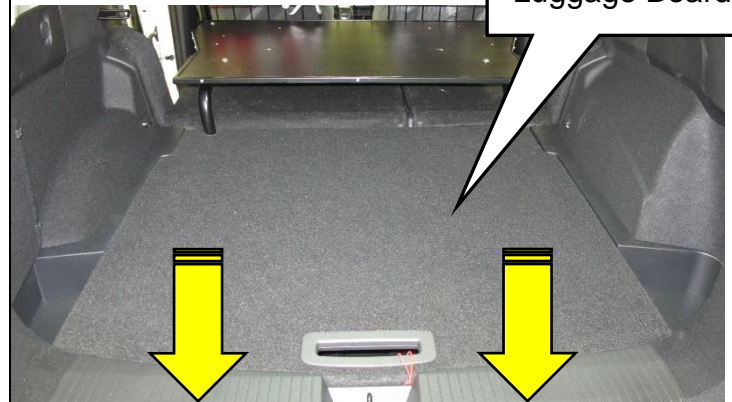


Figure 11

11. Remove the (4) partition rear support mounting bolts (Figure 12).

- Secure the bolts in a safe place, they will be reinstalled later

**HINT:** The rear support mount bolts are 13 mm.

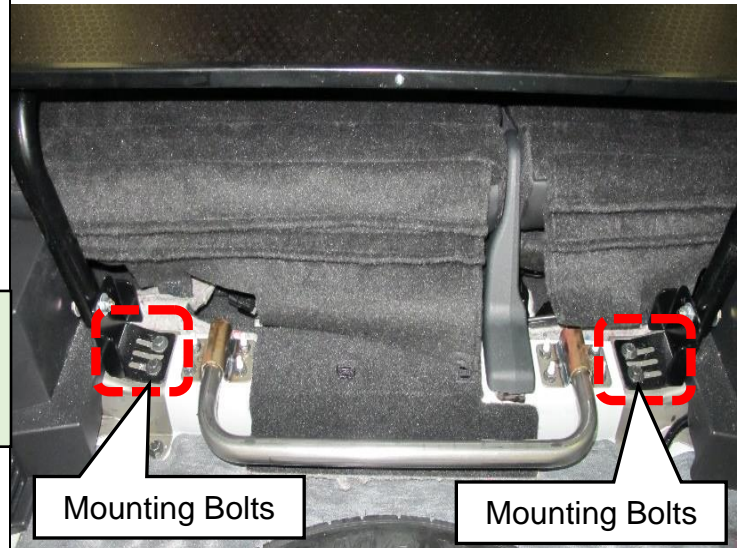


Figure 12

12. Carefully remove the partition platform from the vehicle.

- Remove the partition platform out the rear of the vehicle through the rear door opening (Figure 13)
- Be careful to not scratch interior components during removal
- Secure the partition platform in a safe place, as it will be reinstalled later

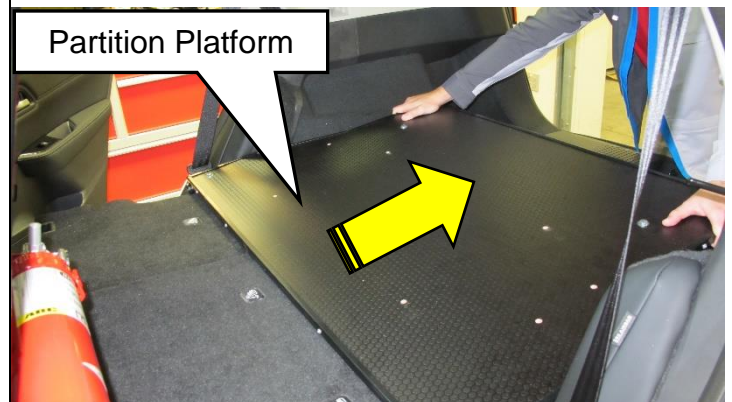


Figure 13

13. Move both the second row seat backs to the full upright position (Figure 14).



Figure 14

## FUEL TANK REPLACEMENT:

14. Replace the fuel tank.

- Refer to the **ESM: ENGINE > FUEL SYSTEM > KR15DDT > REMOVAL AND INSTALLATION > FUEL TANK > Removal and Installation**
- Follow all ESM Warnings and Cautions for fuel system repairs
- Refer to the ESM for all fasteners torque specifications

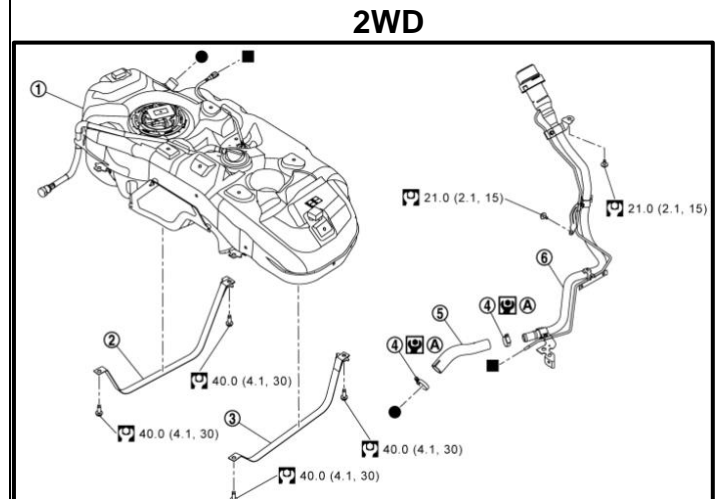


Figure 15

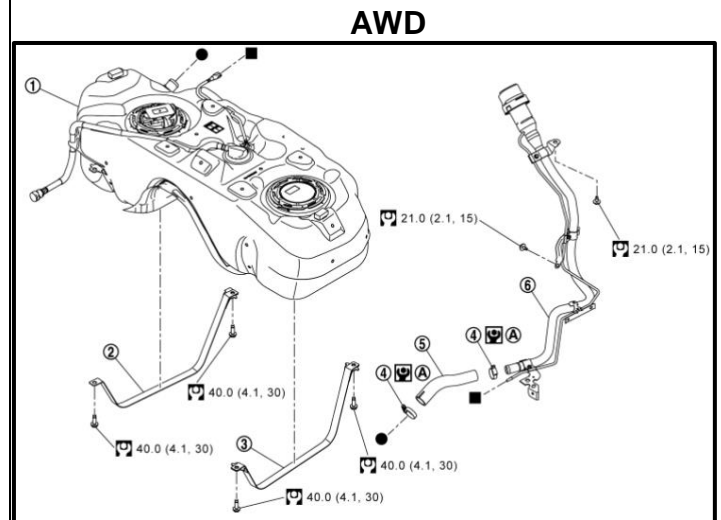


Figure 16

## PARTITION INSTALLATION:

15. Fold both the second row seat backs to the full down position (Figure 17).



Figure 17



16. Carefully reinstall the partition platform in the vehicle.

- Install the partition platform in the rear of the vehicle through the rear door opening (Figure 18)
- Be careful to not scratch interior components during installation

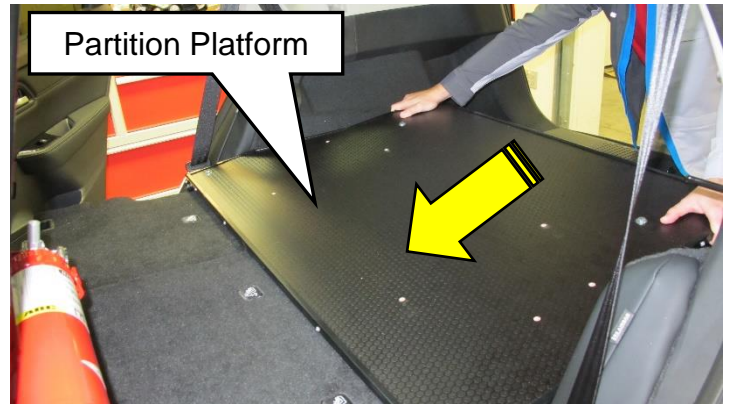


Figure 18

17. Install the support arm to partition mount bolts/washers and nuts on both sides (Figures 19 and 20).

- Torque the bolts to 39 N•m (4.0 kg-m, **29 ft-lb**)

**Left Side**

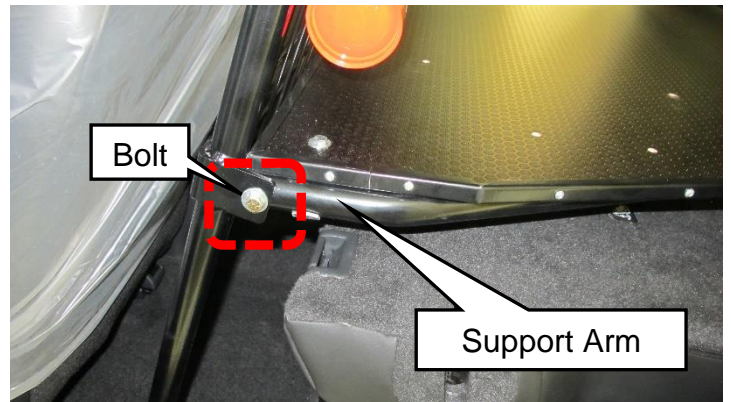


Figure 19

**Right Side**

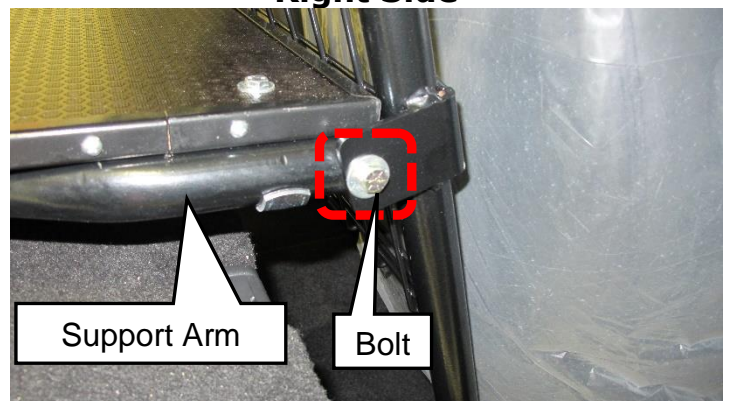


Figure 20

**HINTS:**

- The bolt and nut size is standard 1/2 inch.
- The nut on the backside will need to be held with a wrench while the bolt is tightened.

18. Install the (4) partition rear support mounting bolts (Figure 21).

- Torque the bolts to 21 N•m (2.0 kg-m, **16 ft-lb**)

**HINT:** The rear support mount bolts are 13 mm.

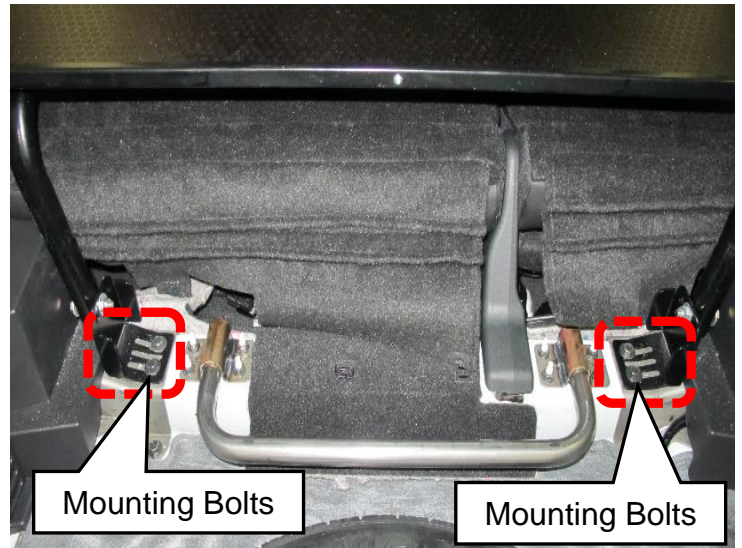


Figure 21

19. Install the luggage board.

- Slide the board into the vehicle from the rear door. Slide the side hooks into the floor trim on each side (Figure 22)

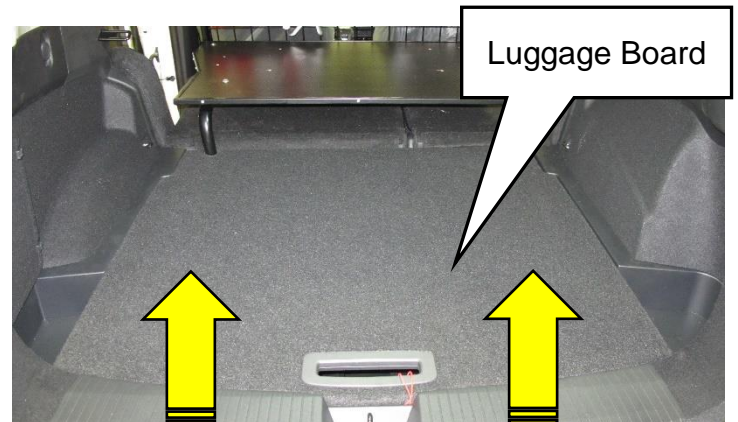


Figure 22

20. If applicable, place the cardboard box labeled, "Stowed Items" into the rear cargo area (Figure 23).

**IMPORTANT:** Do not open the cardboard box it has a tamper proof seal.



Figure 23

21. Close both rear doors and the back door (Figure 24).



Figure 24

22. Remove the vehicle from the lift.

## PARTS INFORMATION

### FWD

Description	Part #	Quantity
TANK ASSY - FUEL	17202-6RR0A	1
PACKING - FUEL GAUGE	17342-6RR0A	1
PLATE - LOCK, FUEL GAUGE	17343-6RE0B	1
GASKET - EXHAUST	20692-8H30A	1

### AWD

Description	Part #	Quantity
TANK ASSY - FUEL	17202-6RR1A	1
PACKING - FUEL GAUGE	17342-6RR0A	2
PLATE - LOCK, FUEL GAUGE	17343-6RR0A	2
GASKET - EXHAUST	20692-8H30A	1
BOLT (Prop Shaft to Transfer Case)	37120-JD00B	3
BOLT - FIX PROPELLER SHAFT (Prop Shaft to Final Drive)	37120-JD01A	4
NUT - FIX PROPELLER SHAFT (Prop Shaft to Final Drive)	37171-7S00A	4
NUT (Prop Shaft Carrier Bearing)	01223-A0121	2

## CLAIMS INFORMATION

Submit a "CM" line claim using the following claims coding:

<b>Campaign ("CM") ID</b>	<b>Description:</b>	<b>Op Code</b>	<b>FRT</b>
<b>PC903</b>	Inspect Fuel Tank (OK Condition)	PC9030	0.2 Hr
	Inspect Fuel Tank, Remove/Install Partition Parts and Replace Fuel Tank (2WD)	PC9031	2.2 Hr
	Inspect Fuel Tank, Remove/Install Partition Parts and Replace Fuel Tank (AWD)	PC9032	3.1 Hr

---