



# TECHNICAL SERVICE BULLETIN

Classification: KS22-003	Reference: NTB22-037	Date: August 16, 2022
-----------------------------	-------------------------	--------------------------

## INTELLIGENT KEY NOT DETECTED IN CENTER CONSOLE

**APPLIED VEHICLES:** 2021-2022 Sentra (B18)

**APPLIED GRADES:** SV, SR

### IF YOU CONFIRM

The Intelligent Key fob is not detected when above or around the center console area.

### ACTION

Use the **SERVICE PROCEDURE** in the bulletin to reconfigure the Hands Free Module (HFM).

**IMPORTANT:** The purpose of **ACTION** (above) is to give you a quick idea of the work you will be performing. You **MUST** closely follow the entire **SERVICE PROCEDURE** as it contains information that is essential to successfully completing this repair.

Bulletins are intended for use by qualified technicians, not 'do-it-yourselfers'. Qualified technicians are properly trained individuals who have the equipment, tools, safety instruction, and know-how to do a job properly and safely. **NOTE:** If you believe that a described condition may apply to a particular vehicle, **DO NOT** assume that it does. See your Nissan dealer to determine if this applies to your vehicle.

## SERVICE PROCEDURE

**IMPORTANT:** Before starting, make sure:

- ASIST on the CONSULT PC has been synchronized (updated) to the current date.
- All CONSULT software updates (if any) have been installed.

1. Connect the Vehicle Interface (VI) to the vehicle.
2. Turn the ignition ON with the engine OFF.
3. Start CONSULT-III plus (C-III plus) on the CONSULT PC.
  - The serial number will display when the VI is recognized.
4. Select **Re/programming, Configuration**.

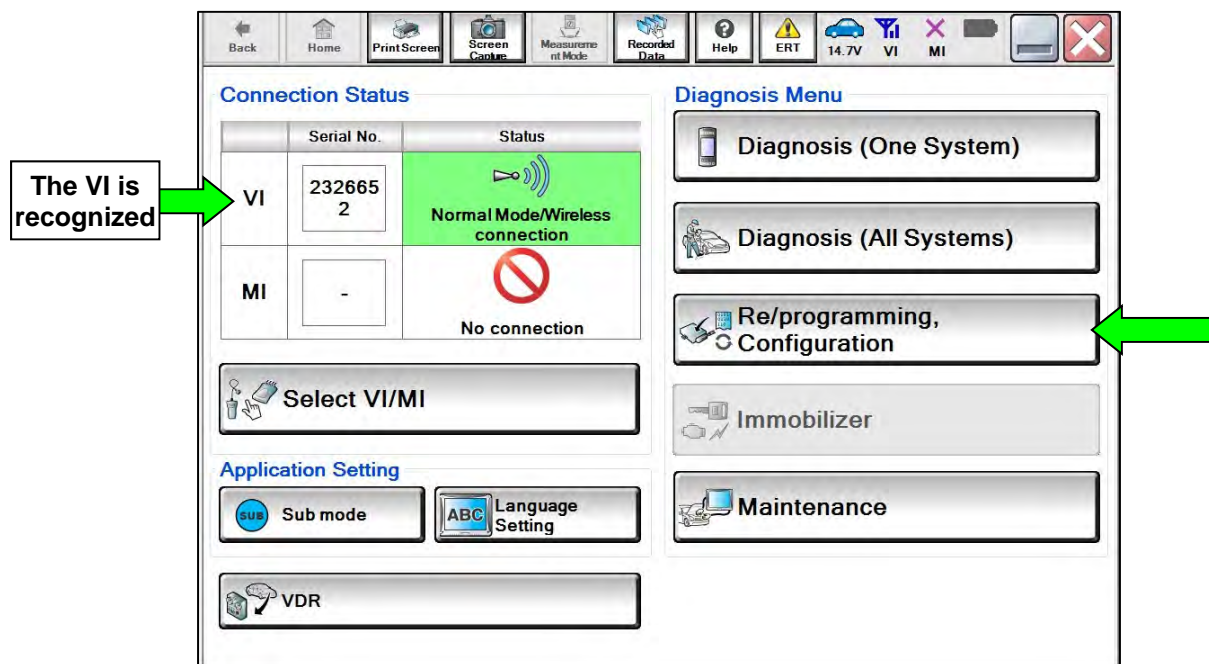


Figure 1

- Use the arrows (if needed) to view and read all precautions.
- Check the box confirming the precautions have been read, and then select **Next**.

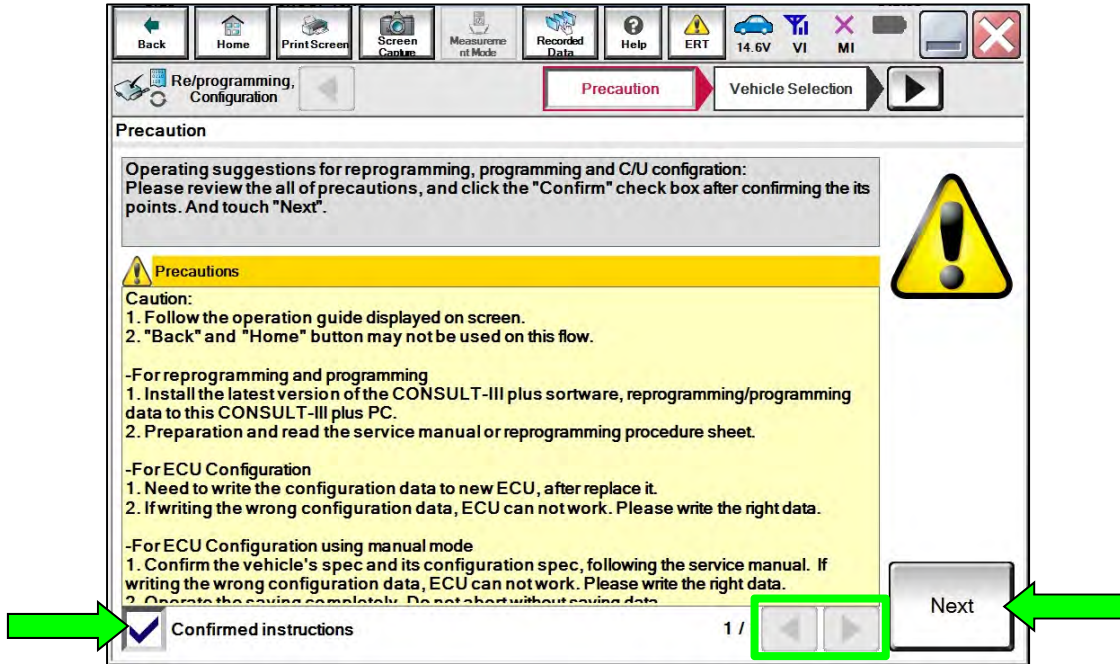


Figure 2

- Select **Automatic Selection(VIN)**.

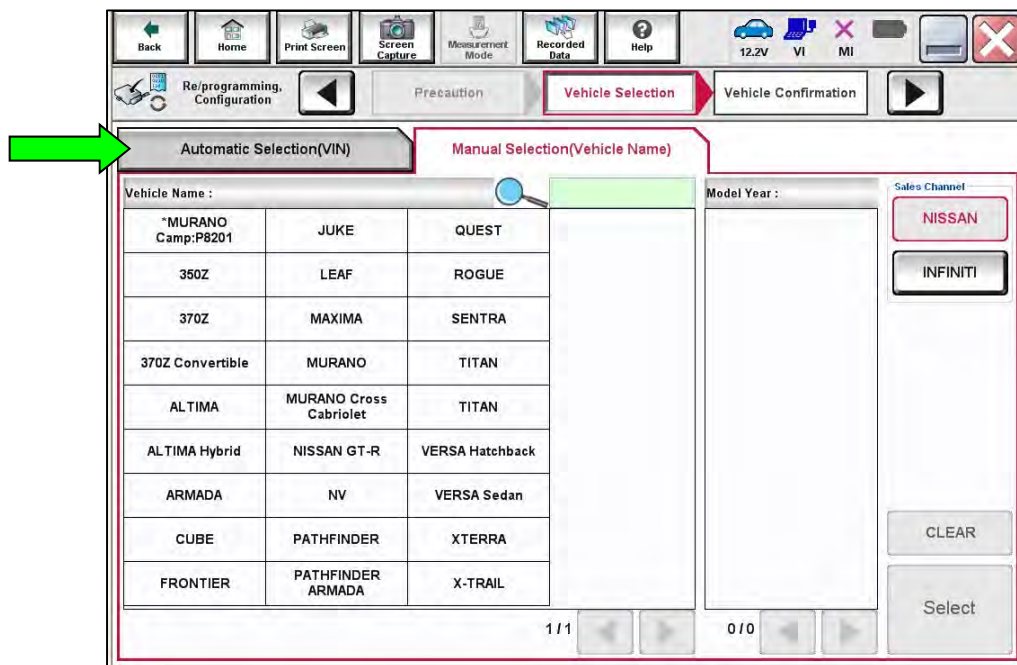


Figure 3

8. Allow the CONSULT to perform automatic VIN selection.

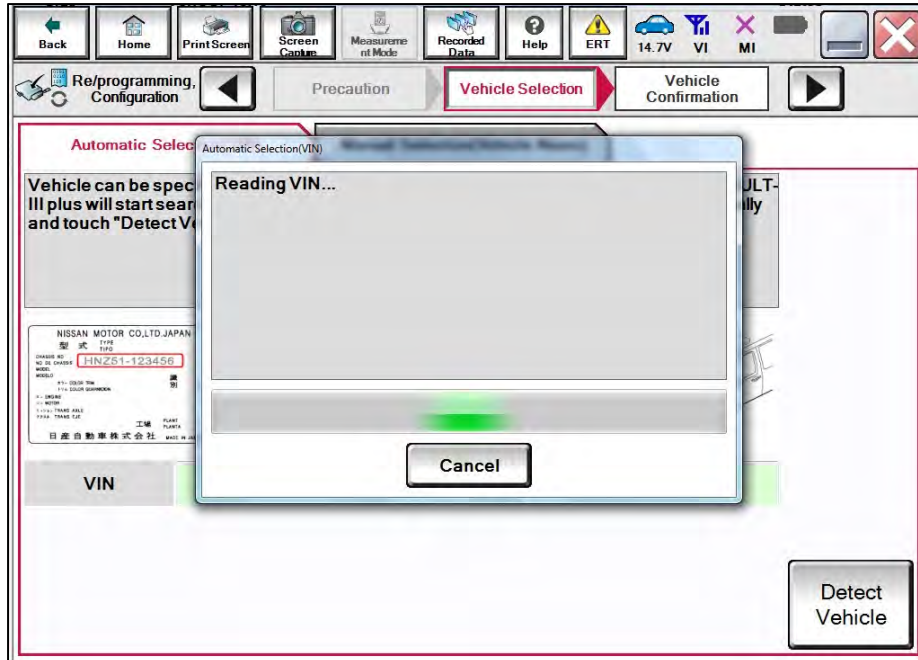


Figure 4

9. Confirm the VIN or Chassis # is correct, and then select Confirm.

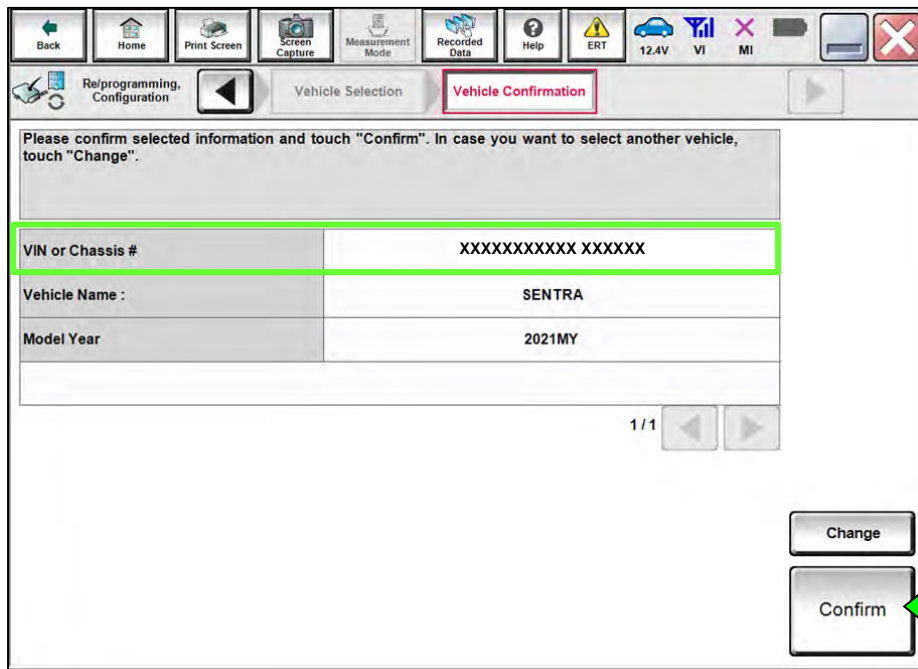


Figure 5

10. Allow the System call to complete.

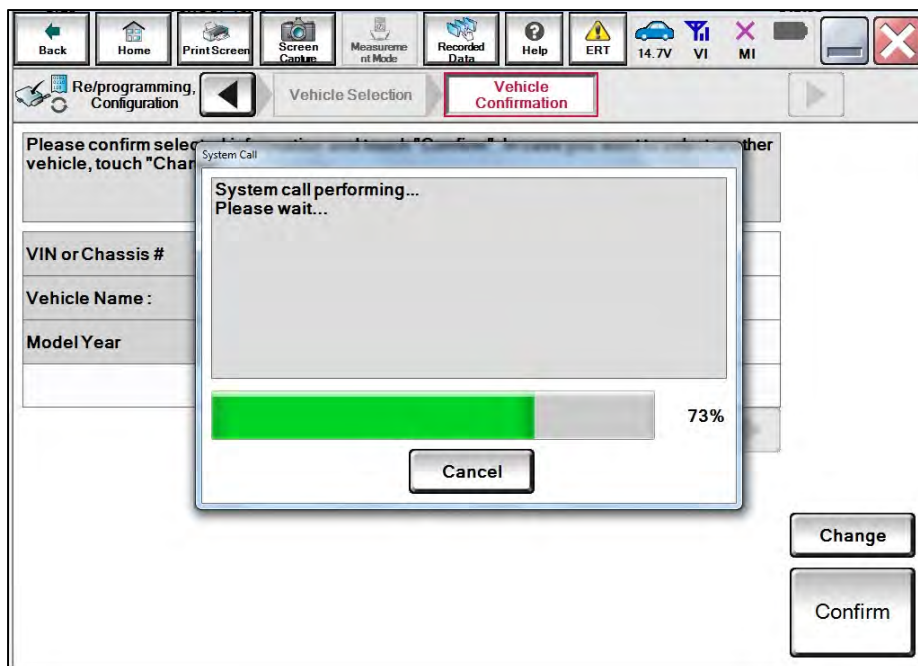


Figure 6

11. Confirm the VIN is correct for the vehicle, and then select **Confirm**.

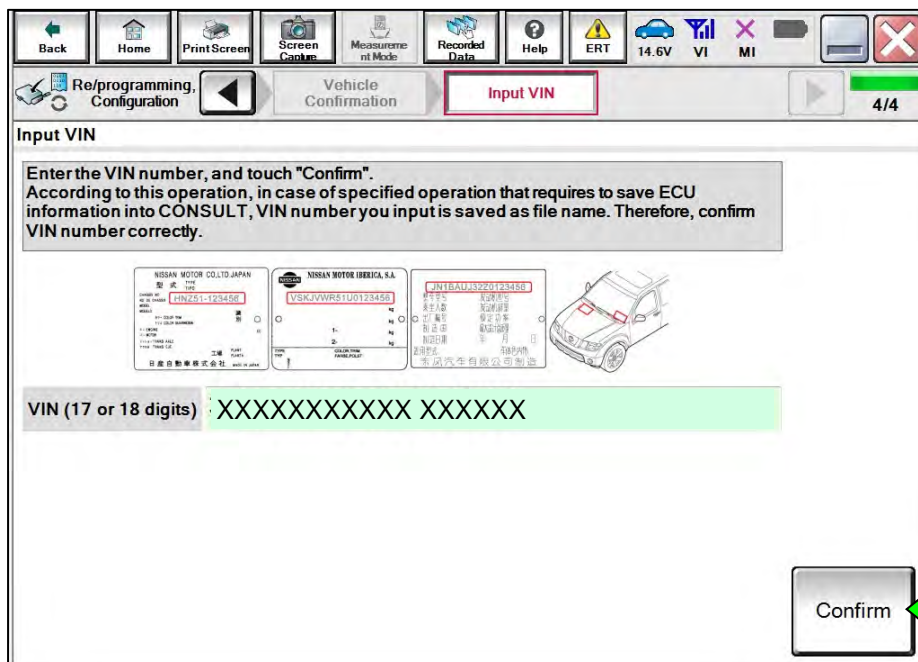


Figure 7

12. Select **HANDS FREE MODULE**.

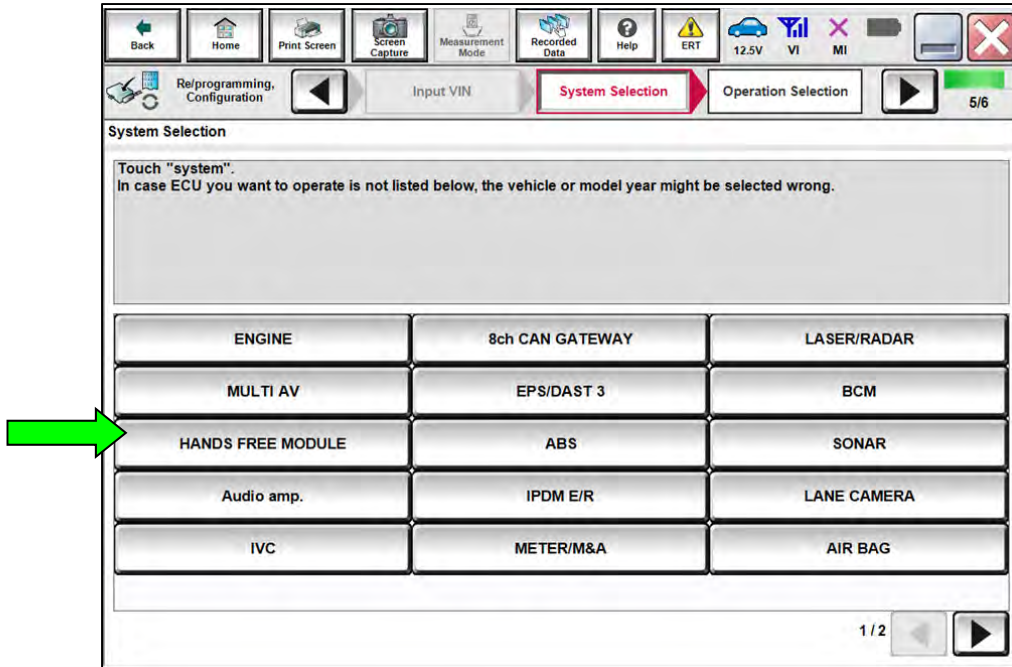


Figure 8

13. Select **After ECU Replacement** under **VEHICLE CONFIGURATION**.

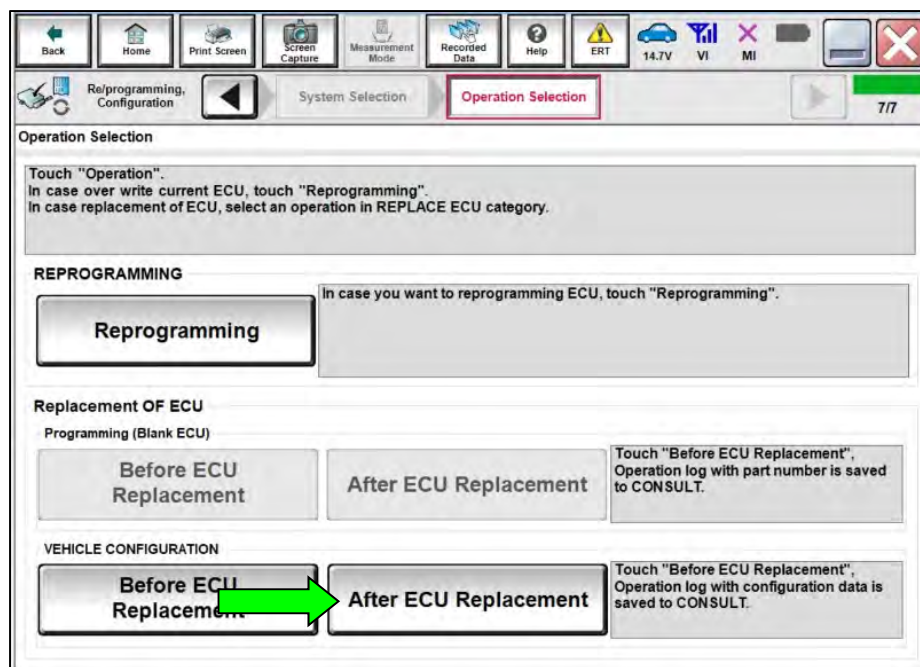


Figure 9

14. Select **Manual selection**.

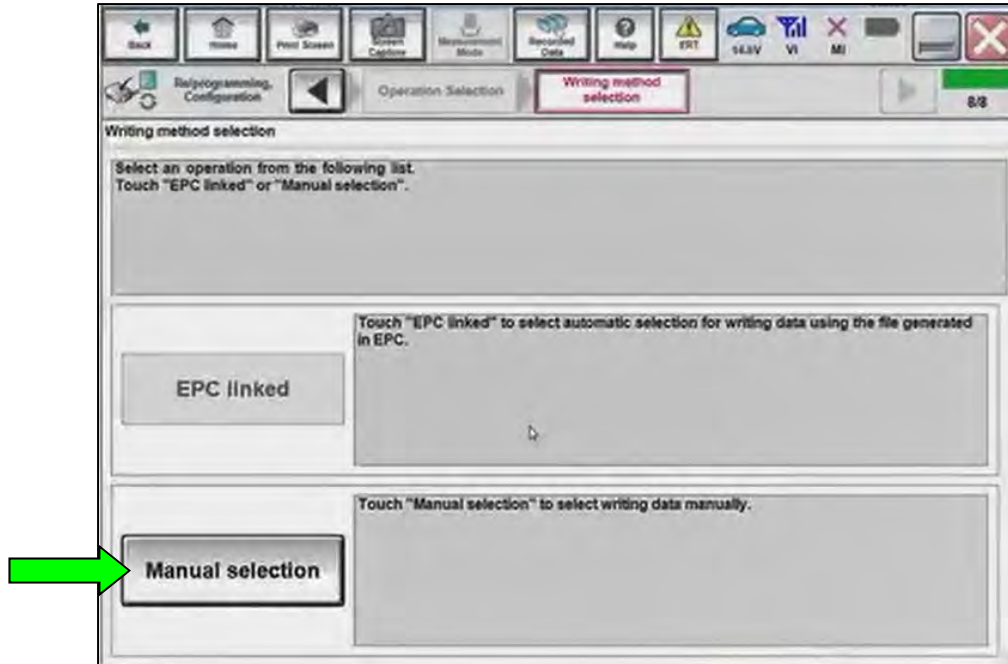


Figure 10

15. Select the grade specific **Type ID**, and then select **Next**.

- With Remote Engine Start (RES), select "285J7-6LE1B"
- Without RES, select "285J7-6LE4B"

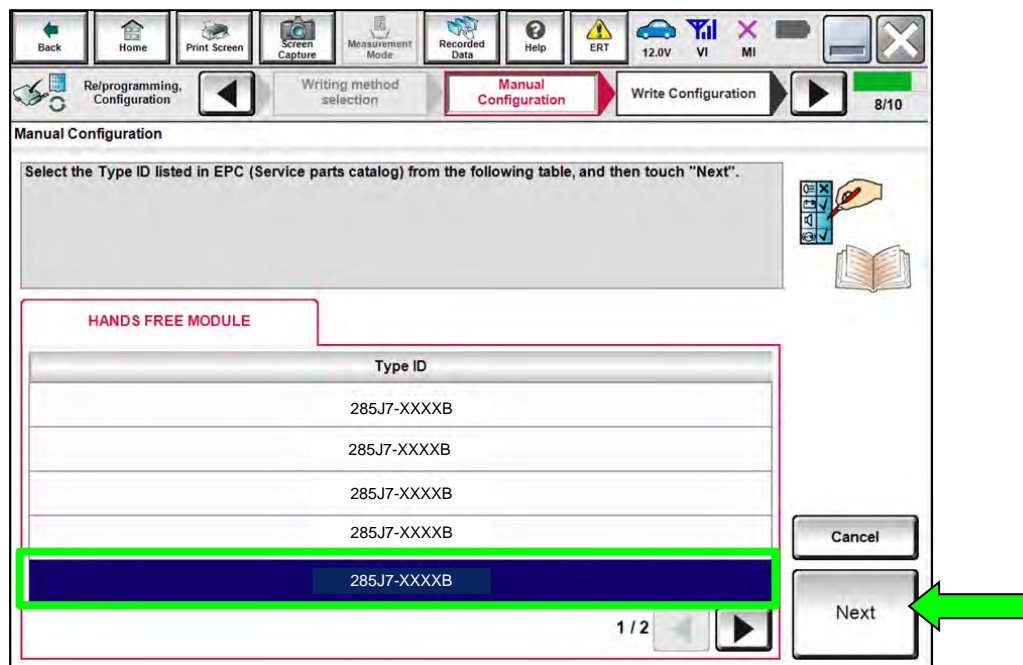


Figure 11

- 16. Verify the ignition is ON and the engine is OFF, and then select **OK** to write the configuration.

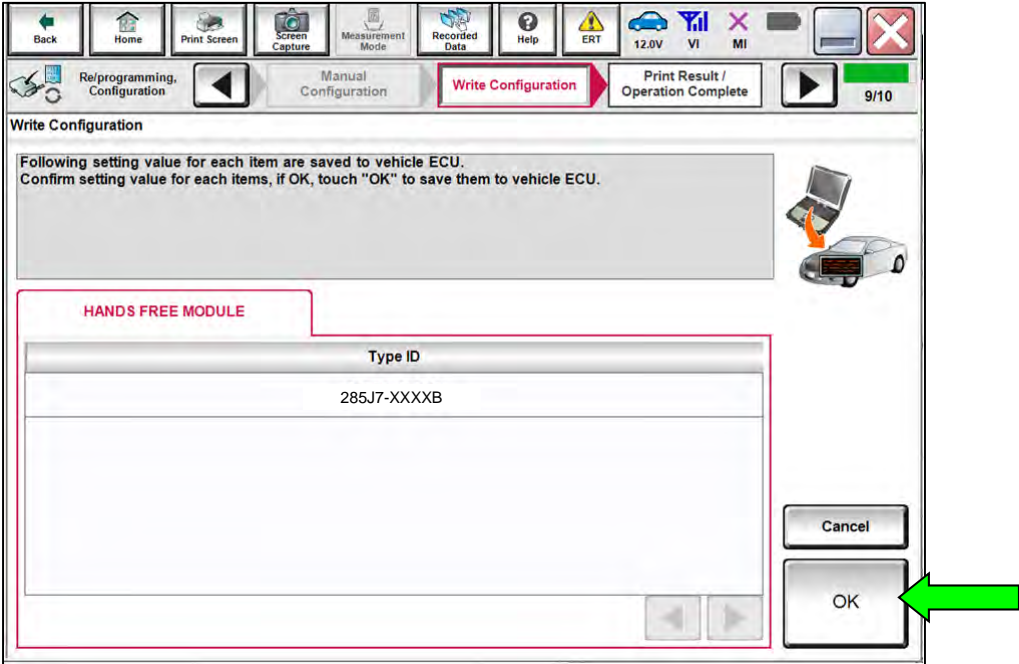


Figure 12

- 17. Select **USA/CANADA Dealers** from the drop down menu, and then select **OK**.

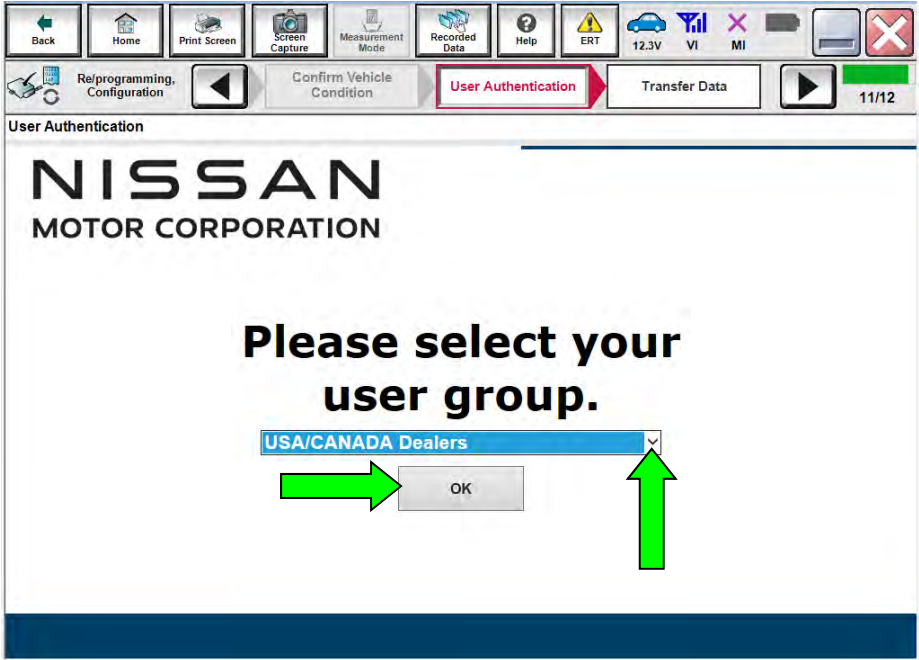


Figure 13



18. Enter your NNAnet credentials (Username and Password), and then select **Submit**.

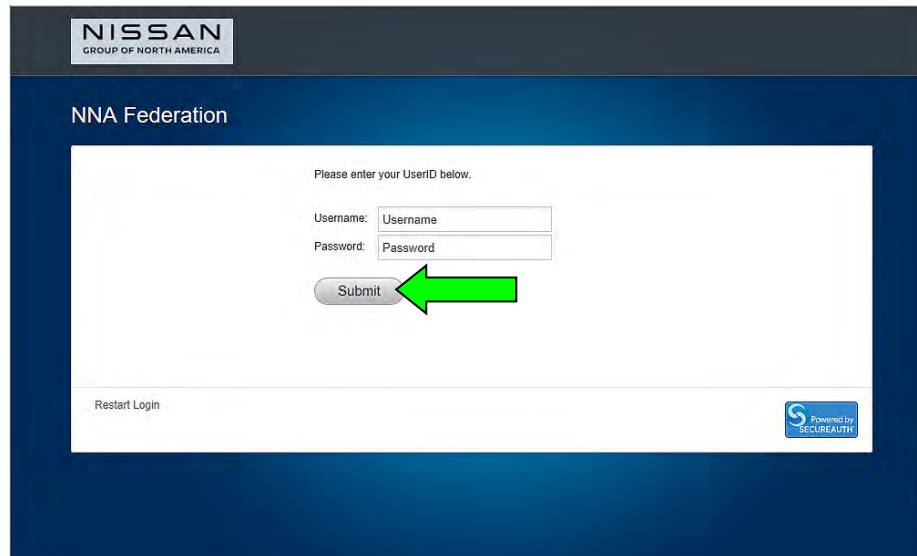


Figure 14

19. Allow the **Write Configuration** to complete.

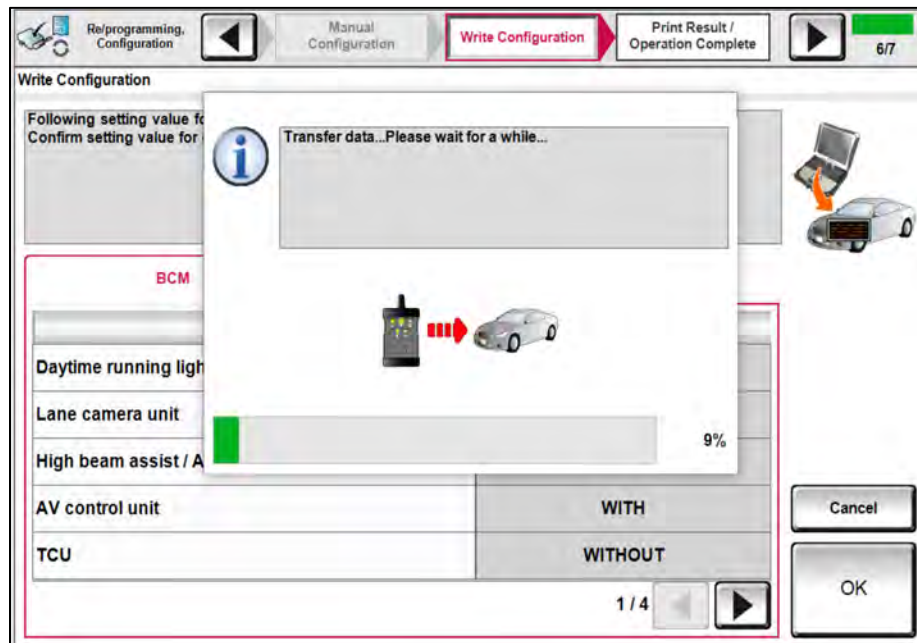


Figure 15

20. Confirm that the **Type ID** is now:
- With RES – "285J7-6LE1B"
  - Without RES – "285J7-6LE4B"
21. Select **End**.

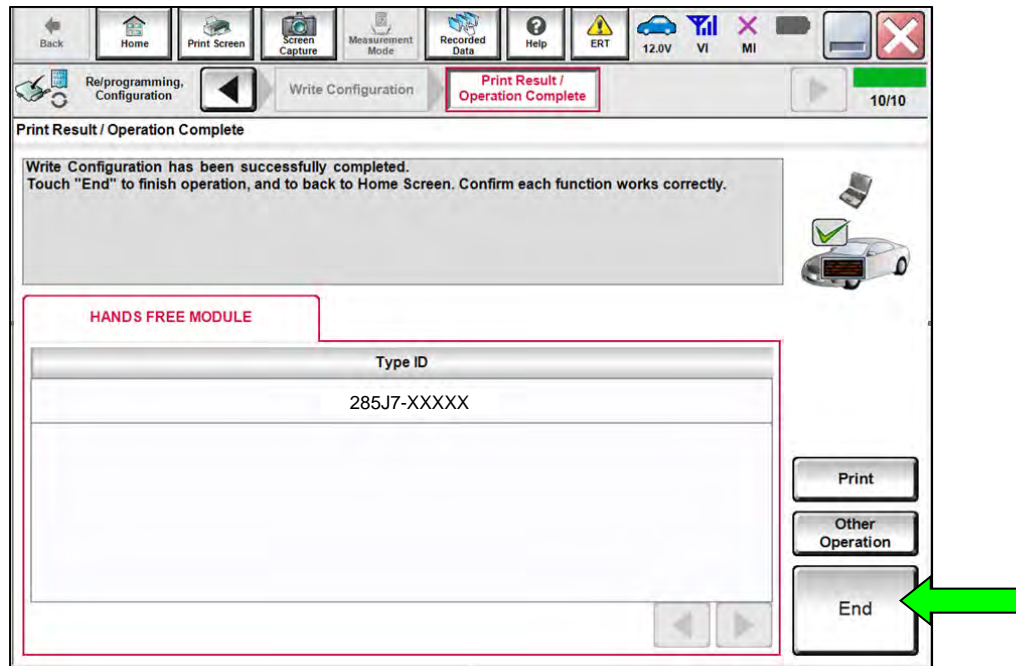


Figure 16

## CLAIMS INFORMATION

Submit a Primary Part (PP) type line claim using the following claims coding:

DESCRIPTION	PFP	OP CODE	SYM	DIA	FRT
Reconfigure Hands Free Module	(1)	RXB3AA	ZE	32	0.3

- (1) Reference the electronic parts catalog and use the Smart Keyless Control Assembly (285E1-\*\*\*\*\*) as the Primary Failed Part (PFP).

## AMENDMENT HISTORY

PUBLISHED DATE	REFERENCE	DESCRIPTION
August 16, 2022	NTB22-037	Original bulletin published