

Subject: DOOR LOCK KEEPS WORKING AFTER THE LOCK BUTTON IS RELEASED	Service Alert No.: SA-056/22
	Last Issued : 08/15/2022

BULLETIN NOTES

APPLICABLE MODEL(S)/VINS

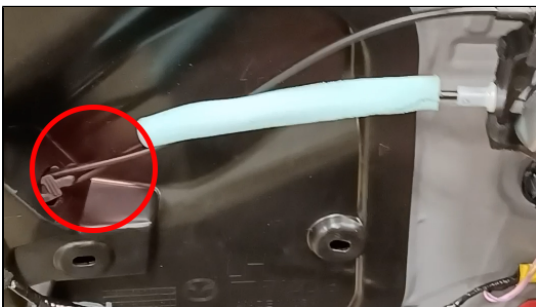
2023 CX-50

DESCRIPTION

Some vehicles may exhibit a power door lock that may continue activating for a few seconds after the button is pressed.

REPAIR PROCEDURE

1. Before proceeding with this Service Alert, please view the attached short video.
2. Is the door lock continuing to operate after the door lock button is pressed as shown in the video?
YES - Go to the next step.
NO - This Service Alert does not apply. Check for any DTCs and diagnose according to the instructions on MGSS.
3. Remove the door panel (FRONT DOOR TRIM REMOVAL/INSTALLATION).
4. Inspect the 2 cables from the inner door handle to the latch assembly.
Are they twisted/overlapped *instead of* routed alongside each other?



YES - Remove the inner door handle, rotate it to untwist the cables, and then reattach the handle. Continue to the next step.

NO - This Service Alert does not apply. Check for any DTCs and diagnose according to the instructions on MGSS.

CONSUMER NOTICE: The information and instructions in this bulletin are intended for use by skilled technicians. Mazda technicians utilize the proper tools/ equipment and take training to correctly and safely maintain Mazda vehicles. These instructions should not be performed by "do-it-yourselfers." Customers should not assume this bulletin applies to their vehicle or that their vehicle will develop the described concern. To determine if the information applies, customers should contact their nearest authorized Mazda dealership. Mazda North American Operations reserves the right to alter the specifications and contents of this bulletin without obligation or advance notice. All rights reserved. No part of this bulletin may be reproduced in any form or by any means, electronic or mechanical--including photocopying and recording and the use of any kind of information storage and retrieval system ---without permission in writing.

5. Are the door locks working correctly?

YES - Reassemble the vehicle and return it to the customer.

NO - Check for any DTCs and diagnose according to the instructions on MGSS.

CONSUMER NOTICE: The information and instructions in this bulletin are intended for use by skilled technicians. Mazda technicians utilize the proper tools/ equipment and take training to correctly and safely maintain Mazda vehicles. These instructions should not be performed by "do-it-yourselfers." Customers should not assume this bulletin applies to their vehicle or that their vehicle will develop the described concern. To determine if the information applies, customers should contact their nearest authorized Mazda dealership. Mazda North American Operations reserves the right to alter the specifications and contents of this bulletin without obligation or advance notice. All rights reserved. No part of this bulletin may be reproduced in any form or by any means, electronic or mechanical---including photocopying and recording and the use of any kind of information storage and retrieval system ---without permission in writing.