



TECHNICAL SERVICE BULLETIN

Classification: BT21-020A	Reference: NTB21-097A	Date: May 10, 2022
------------------------------	--------------------------	-----------------------

WATER LEAK AT TOP FRONT CORNERS OF WINDSHIELD

This bulletin has been amended. See **AMENDMENT HISTORY** on the last page.
Please discard previous versions of this bulletin.

APPLIED VEHICLES: 2021-2022 Rogue (T33)
APPLIED GRADES: All with roof rails or roof side moldings

IF YOU CONFIRM

A water leak is present at either top front corner of the windshield,

OR

Water stains are present on the headliner or on one or both interior front pillar garnish.

ACTION

Remove both roof rails, or roof side moldings, and replace the leading plastic clip using the **SERVICE PROCEDURE** starting on page 2.

IMPORTANT: The purpose of **ACTION** (above) is to give you a quick idea of the work you will be performing. You **MUST** closely follow the entire **SERVICE PROCEDURE** as it contains information that is essential to successfully completing this repair.

Nissan Bulletins are intended for use by qualified technicians, not 'do-it-yourselfers'. Qualified technicians are properly trained individuals who have the equipment, tools, safety instruction, and know-how to do a job properly and safely. **NOTE:** If you believe that a described condition may apply to a particular vehicle, **DO NOT** assume that it does. See your Nissan dealer to determine if this applies to your vehicle.

SERVICE PROCEDURE

1. For “S” and “SV” grade vehicles that are equipped with roof side moldings (lay flat and do not have cross bar mounting bolts), skip to step 3.
2. Access the cross bar (roof rack) mounting bolts.
 - If cross bars are mounted, remove all eight (8) cross bar mounting bolts on the LH and RH sides of the vehicle, and then remove both cross bars from the vehicle.
 - If cross bars are not mounted, as shown in Figure 1, remove the four (4) roof rail covers and then all eight (8) bolts.

HINT: Vehicles that do not have cross bars will have roof rail covers over the bolts that are intended to hold the cross bars, as shown in Figure 1, Figure 2 and removed in Figure 3.

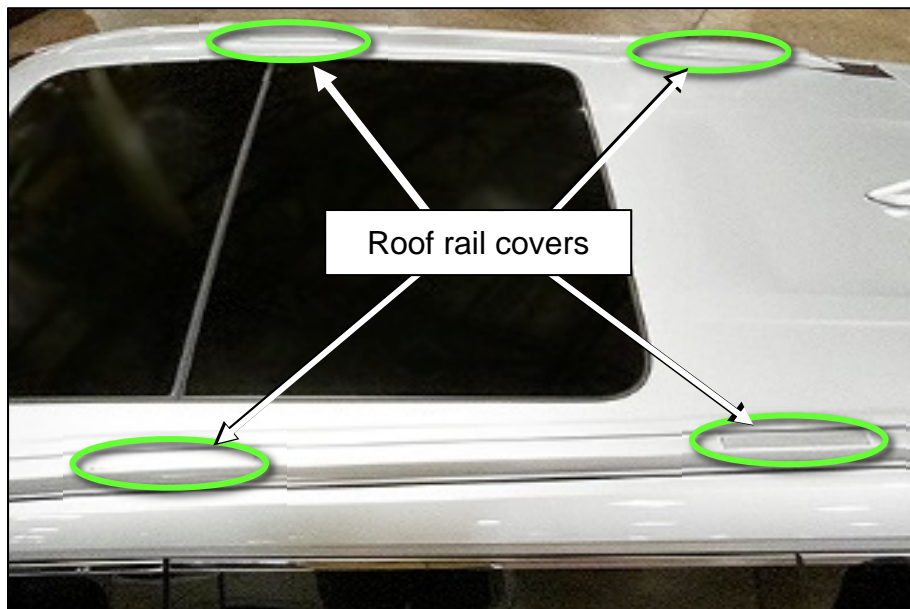


Figure 1



Figure 2

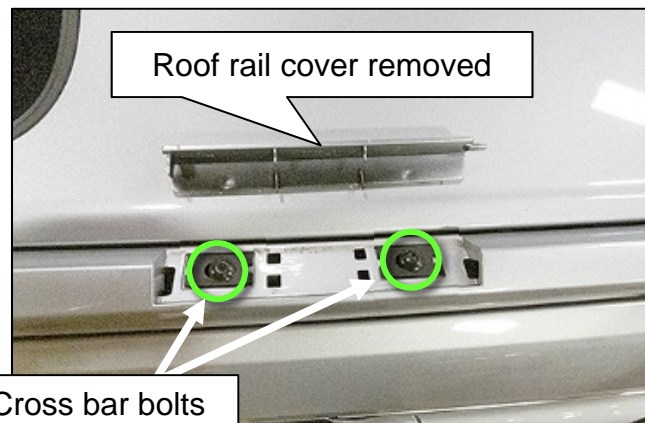


Figure 3

3. Remove the LH roof rail or roof side molding.
 - For roof rails, refer to the ESM: **BODY EXTERIOR, DOORS, ROOF & VEHICLE SECURITY > EXTERIOR > REMOVAL AND INSTALLATION > ROOF RAIL**
 - For roof side molding, refer to the ESM: **BODY EXTERIOR, DOORS, ROOF & VEHICLE SECURITY > EXTERIOR > REMOVAL AND INSTALLATION > ROOF SIDE MOLDING**

The following steps and figures reference roof rails. Roof side moldings are similar.

4. Remove any roof rail clips that may have detached from the roof rail (Figure 4), and then reattach them to the roof rail.



Figure 4

5. Inspect the remaining roof rail clips still attached to the roof rail, and confirm that they are completely seated, as shown in Figure 6. Seat the roof rail clips as needed.

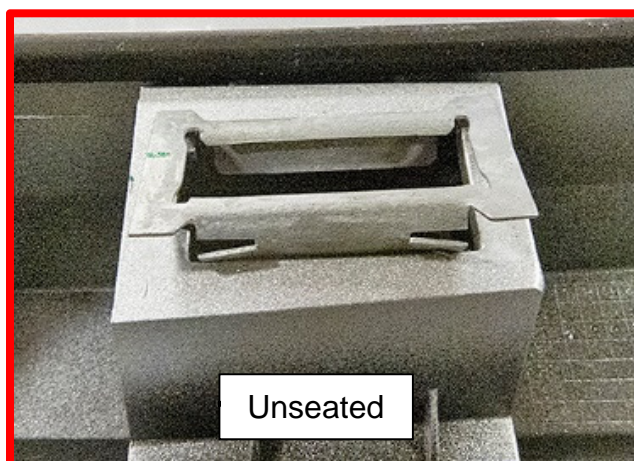


Figure 5

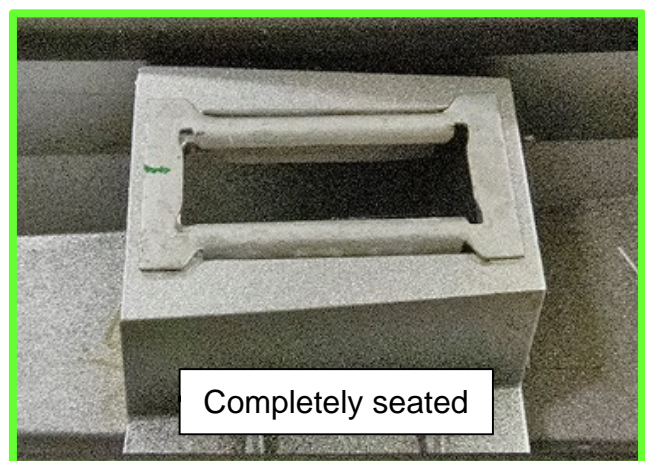


Figure 6

6. If present, remove any sealer and remaining pieces of the roof rail clip that are present from the leading roof rail clip hole.
 - Remove any remaining sealer with Isopropyl Alcohol.

NOTICE

Ensure that the paint is not damaged. If paint damage occurs, follow Nissan paint guidelines.



Figure 7

7. Remove the old roof rail white plastic clip.
8. Install a new roof rail clip, as shown in Figure 8.

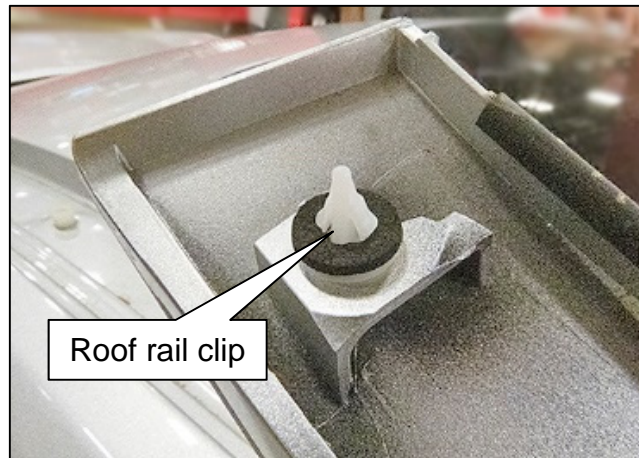


Figure 8

9. Remove the black seal from the roof rail clip, and discard seal.

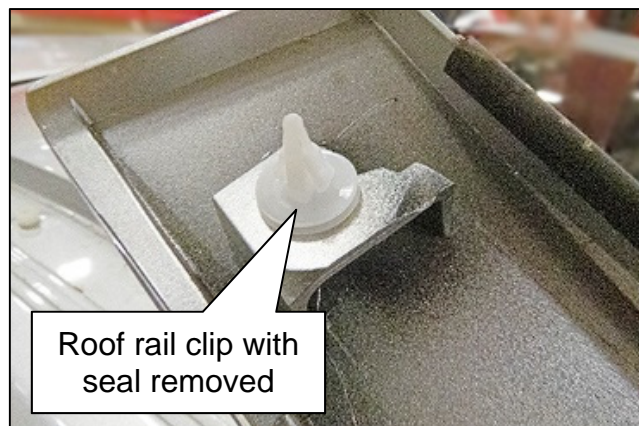


Figure 9

10. Apply a small bead of silicone sealer around the hole that was cleaned in step 6 on page 4.

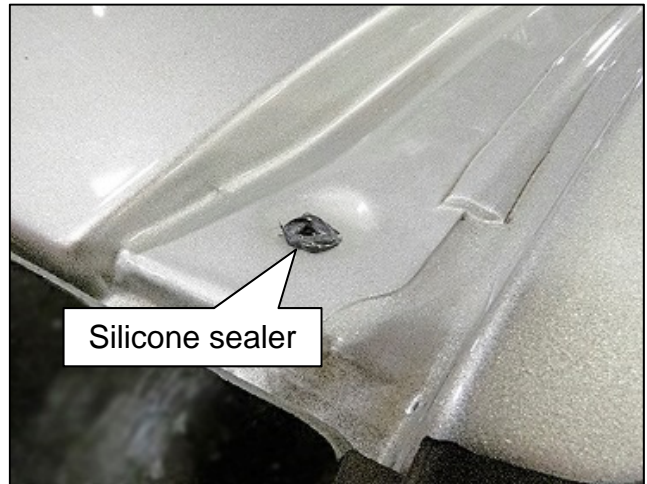


Figure 10

11. Reinstall the roof rail, or roof side molding, in the reverse order of disassembly.
 - For roof rail, torque the cross bar bolts to 9-10 N•m (0.91-1.00kg-m, **80-88 in-lbs**)
 - Confirm that all clips are secured.
12. Perform steps 3-11 on RH side of the vehicle, and then proceed to step 13.
13. Reinstall any remaining vehicle components (cross bars or roof rail covers).
 - Confirm that the remnants of any remaining sealer or debris have been removed from the vehicle.

PARTS INFORMATION

DESCRIPTION	PART NUMBER	QUANTITY
Clip	73857-6RR0A	2
Loctite 5900 RTV Sealant (1) (2)	999MPLT5900P	(3)
Isopropyl Alcohol	(4)	Shop supply

- (1) Order this item through the Nissan Maintenance Advantage program: Phone 877-NIS-NMA1 (877-647-6621). Website order via link on the dealer portal; www.NNAnet.com and click on the "Maintenance Advantage-Tire/Battery/Chemical" link.
- (2) This sealant is not included in any kit.
- (3) One container of Loctite 5900 RTV Sealant is good for approximately 10 repairs. Bill out Loctite 5900 RTV Sealant under the **EXPENSE CODE** shown on this page. Do not include the Loctite 5900 RTV Sealant part number on the claim.
- (4) Available through local source.

CLAIMS INFORMATION

Submit a Primary Part (PP) type line claim using the following claims coding:

DESCRIPTION	PFP	OP CODE	SYM	DIA	FRT
Install clips and sealer both sides	(1)	BX7RAA	ZE	32	0.5

- (1) Reference the **PARTS INFORMATION** table above and use the Clip as the Primary Failed Part (PFP).

EXPENSE CODE

EXPENSE CODE	DESCRIPTION	MAX AMOUNT
008	Sealant	\$5.89

AMENDMENT HISTORY

PUBLISHED DATE	REFERENCE	DESCRIPTION
October 20, 2021	NTB21-097	Original bulletin published
May 10, 2022	NTB21-097A	APPLIED VEHICLES and PARTS INFORMATION revised, EXPENSE CODE added