



TECHNICAL SERVICE BULLETIN

Classification: AT15-011A	Reference: NTB15-083A	Date: May 17, 2022
------------------------------	--------------------------	-----------------------

ENHANCED DIAGNOSTIC LOGIC FOR CVT JUDDER

This bulletin has been amended. See **AMENDMENT HISTORY** on the last page.
Please discard previous versions of this bulletin.

APPLIED VEHICLES: 2013-2015 Altima (L33)
2014-2016 Rogue (T32)
APPLIED ENGINES: 4 cylinder engine only
APPLIED TRANSMISSIONS: CVT

IF YOU CONFIRM

The customer reports a transmission judder (shake, shudder, single or multiple bumps or vibration).

NOTE: A new diagnostic logic has been established to enhance the diagnostic process by storing diagnostic trouble codes (DTCs) on **APPLIED VEHICLES**.

These new DTCs are:

- P17F1** (CVT_JUDDER (C/U INSPECTION))
- P17F0** (CVT_JUDDER (T/M INSPECTION))

ACTION

1. Refer to page 4, step 6 in the **SERVICE PROCEDURE** to confirm this bulletin applies to the vehicle you are working on.
2. If this bulletin applies, reprogram the TCM.

IMPORTANT: The purpose of **ACTION** (above) is to give you a quick idea of the work you will be performing. You **MUST** closely follow the entire **SERVICE PROCEDURE** as it contains information that is essential to successfully completing the repair.

Nissan Bulletins are intended for use by qualified technicians, not 'do-it-yourselfers'. Qualified technicians are properly trained individuals who have the equipment, tools, safety instruction, and know-how to do a job properly and safely. **NOTE:** If you believe that a described condition may apply to a particular vehicle, **DO NOT** assume that it does. See your Nissan dealer to determine if this applies to your vehicle.

SERVICE PROCEDURE

IMPORTANT: Before starting, make sure:

- ASIST on the CONSULT PC has been synchronized (updated) to the current date.
- All CONSULT software updates (if any) have been installed.

NOTE:

- Most instructions for reprogramming with CONSULT are displayed on the CONSULT PC screen.
- If you are not familiar with the reprogramming procedure, [click here](#). This will link you to the “**CONSULT REPROGRAMMING FOR ENGINE OR TRANSMISSION CONTROL MODULE (ECM OR TCM)**” general procedure.

CAUTION:

- Connect a battery maintainer or smart charger, set to reflash mode or a similar setting, to ensure the battery voltage stays between 12.0 V and 15.5 V.. If the vehicle battery voltage drops below 12.0V or above 15.5V during reprogramming, the TCM may be damaged.
- Be sure to turn OFF all vehicle electrical loads.
If a vehicle electrical load remains ON, the TCM may be damaged.
- Be sure to connect the AC Adapter.
If the CONSULT PC battery voltage drops during reprogramming, the process will be interrupted and the TCM may be damaged.
- Turn off all external Bluetooth® devices (e.g., cell phones, printers, etc.) within range of the CONSULT PC and the VI. If Bluetooth® signal waves are within range of the CONSULT PC during reprogramming, reprogramming may be interrupted and the TCM may be damaged.

1. Connect the VI to the vehicle to begin the reprogramming procedure.
2. Start C-III plus.
3. Wait for the VI to be recognized (Figure 1 on the next page).
 - The serial number will display when the VI is recognized.

4. Select **Re/programming, Configuration**.

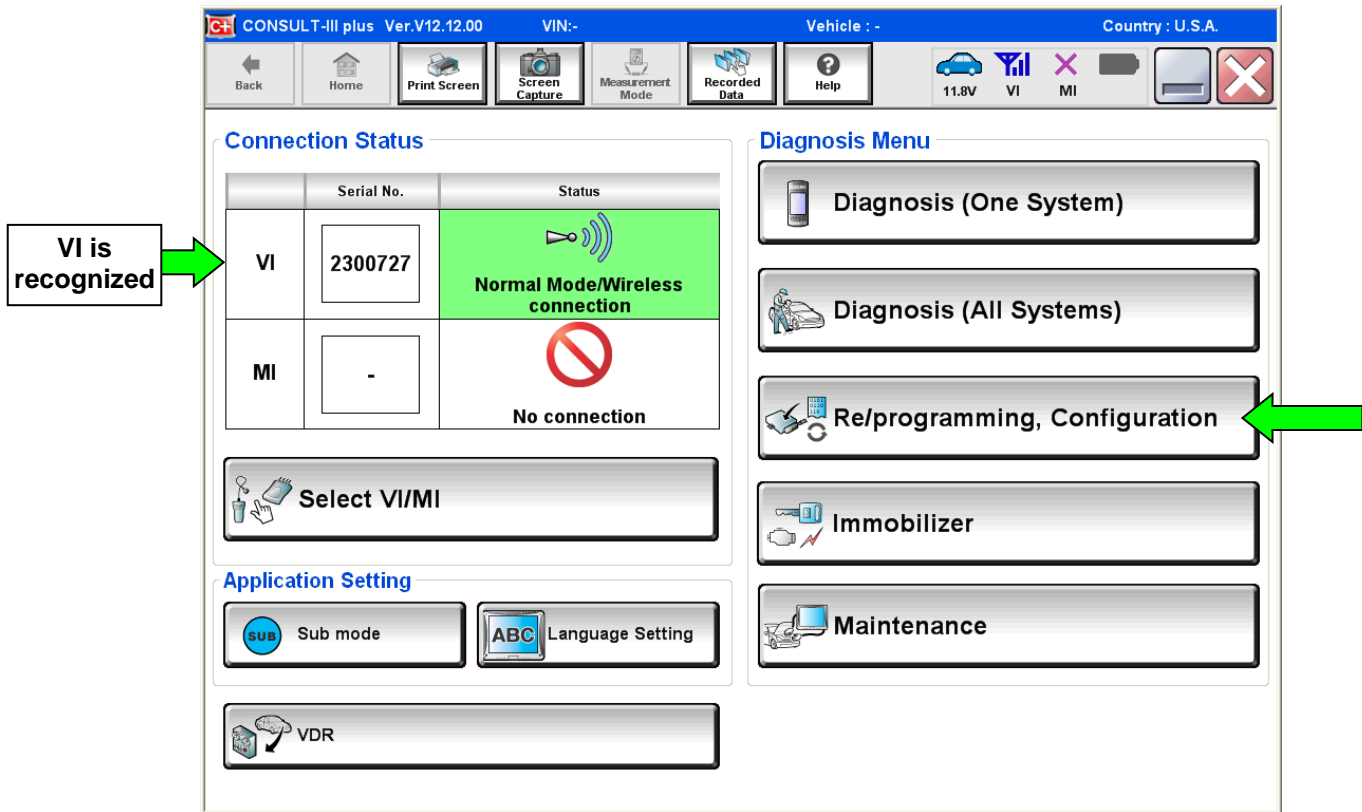


Figure 1

5. Follow the on-screen instructions and navigate the C-III plus to the screen shown in Figure 2 on the next page.

6. When you get to the screen shown in Figure 2, confirm this bulletin applies as follows:

a. Find the TCM **Part Number** and write it on the repair order.

NOTE: This is the current TCM Part Number (P/N).

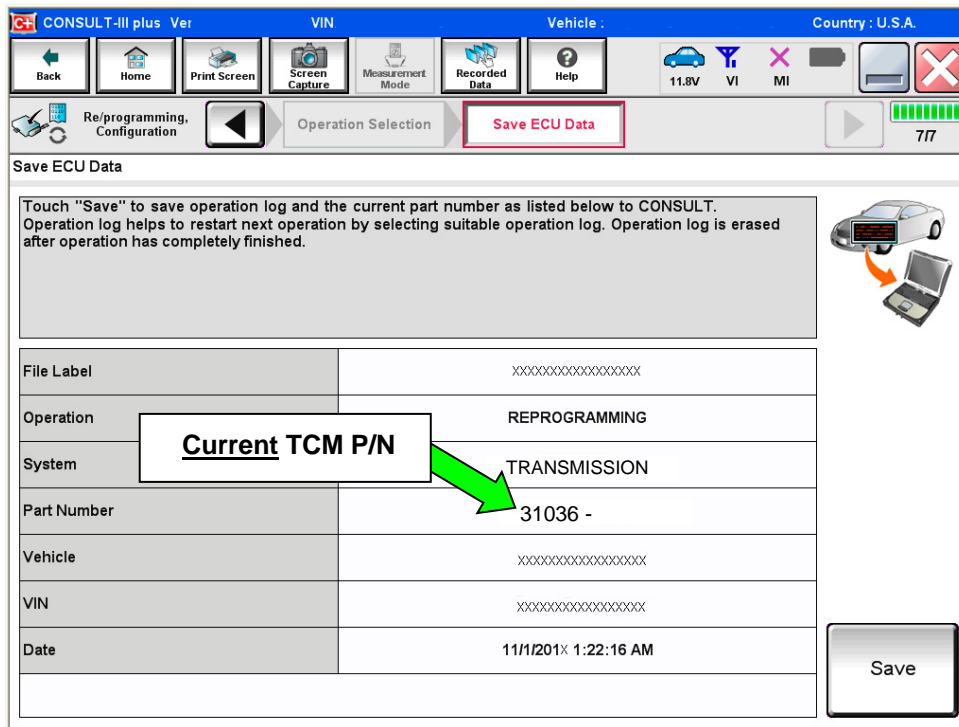


Figure 2

b. Compare the P/N you wrote down to the numbers in the **CURRENT TCM PART NUMBER BEFORE REPROGRAMMING** column in **Table A** below.

- If there is a match, this bulletin applies. Continue with the reprogramming procedure.
- If there is not a match this bulletin does not apply. Refer to ASIST for further diagnostic and repair information.

Table A

MODEL	MODEL YEAR	CURRENT TCM PART NUMBER BEFORE REPROGRAMMING: 31036 -
Altima (L33) (QR25 only)	13MY	3TY0A, 3TY1A 3TA4A, 3TA4B, 3TA4C 3TA0A, 3TA9C
Altima (L33) (QR25 only)	14-15MY	9HM0A, 9HM0C, 9HM0D
Rogue (T32)	14-16MY	4BA0A, 4BA0B 4BA5A, 4BA5B 4BA8A 4BA9A, 4BA9B 5HA0A, 5HA0B 5HA5A 5HJ0A 9TA0A, 9TA0B, 9TA0C 9TA5A

7. Follow the on-screen instructions to navigate C-III plus and reprogram the TCM.

NOTE:

- In some cases, more than one new P/N for reprogramming is available.
 - If more than one new P/N is available, the screen in Figure 3 displays.
 - Select and use the reprogramming option that **does not** have the message “Caution! Use ONLY with NTBXX-XXX”.
- If you get this screen and it is blank (no reprogramming listed), it means there is no reprogramming available for this vehicle. Close C-III plus and refer back to ASIST for further diagnosis.

IMPORTANT: If C-III plus locks up/freezes at this point, or displays “cannot complete reprogramming, the CONSULT PC is set up with User Rights. Reprogramming can be completed with Administrator log in”, the CONSULT PC settings need to be changed so that Users have full access rights. See your dealership’s IT System Administrator for details.

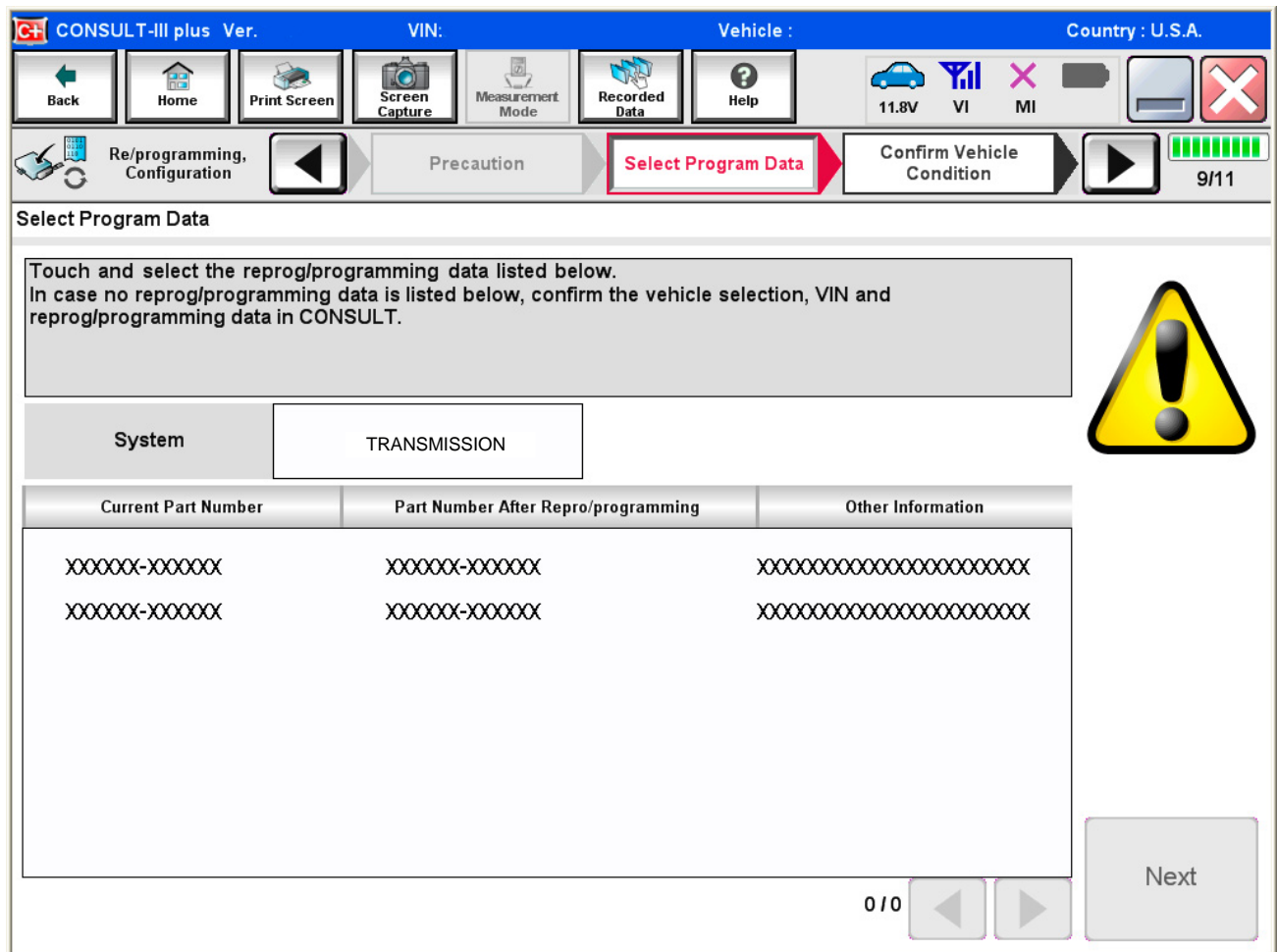


Figure 3

8. When the screen in Figure 4 displays, reprogramming is complete.

NOTE: If the screen in Figure 4 does not display (reprogramming does not complete), refer to the information on the next page.

9. Disconnect the battery maintainer/smart charger from the vehicle.

10. Select **Next**.

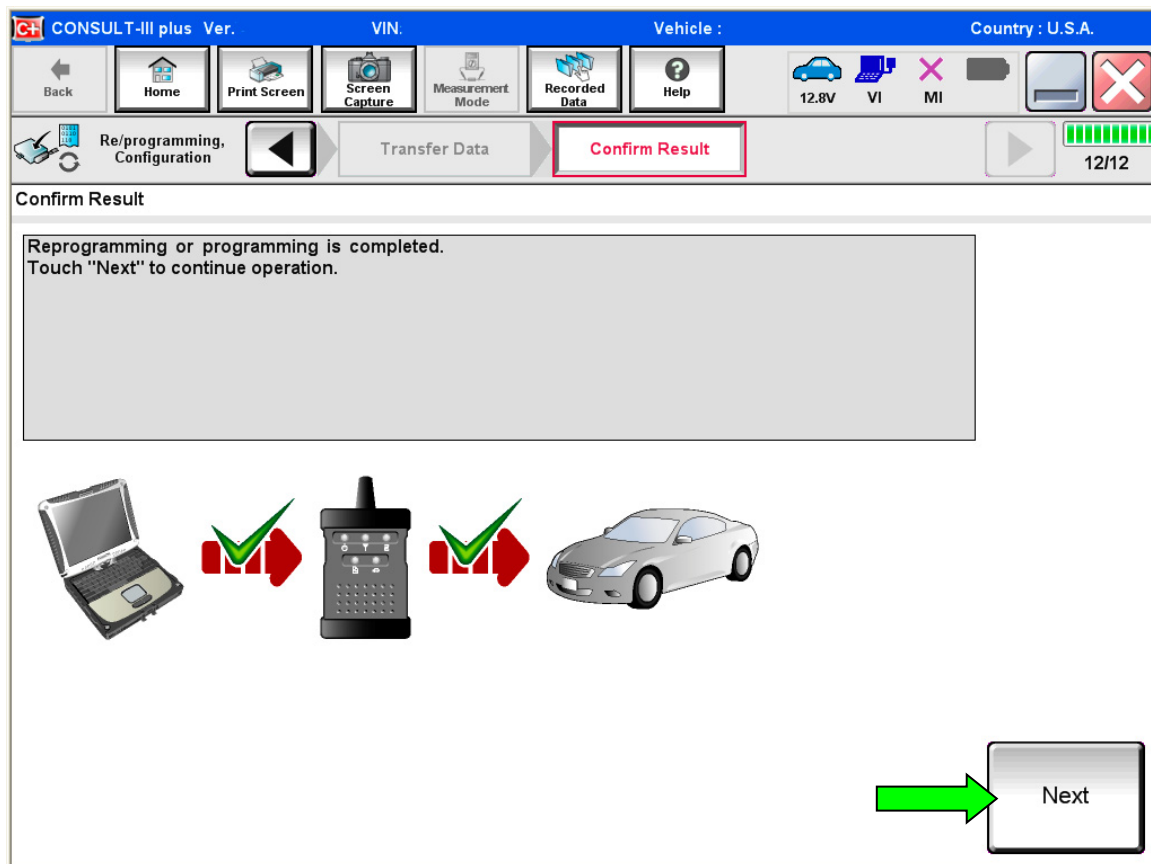


Figure 4

NOTE:

- In the next step (page 8), you will perform **Erase All DTCs**.
- DTC erase is required before C-III plus will provide the final reprogramming confirmation report.

TCM Recovery:

Do not disconnect the VI or shut down C-III plus if reprogramming does not complete.

If reprogramming does not complete, and the “!?” icon displays as shown in Figure 5:

- Check battery voltage (12.0–15.5 V).
- Ignition is ON, engine OFF.
- External Bluetooth® devices are OFF.
- All electrical loads are OFF.
- **Select retry and follow the on screen instructions.**
- “Retry” may not go through on first attempt and can be selected more than once.

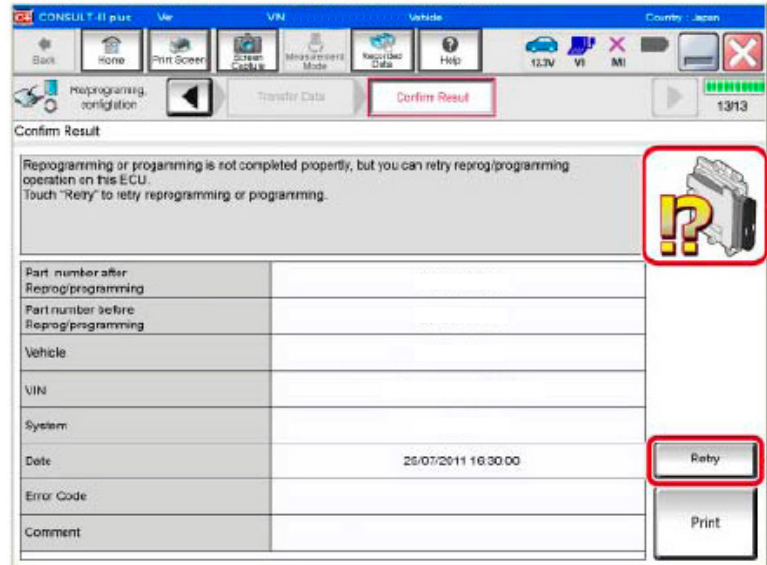


Figure 5

If reprogramming does not complete, and the “X” icon displays as shown in Figure 6:

- Check battery voltage (12.0 – 15.5 V).
- CONSULT A/C adapter is plugged in.
- Ignition is ON, engine OFF.
- Transmission is in Park.
- All C-III plus / VI cables are securely connected.
- All C-III plus updates are installed.
- **Select Home, and restart the reprogram procedure from the beginning.**

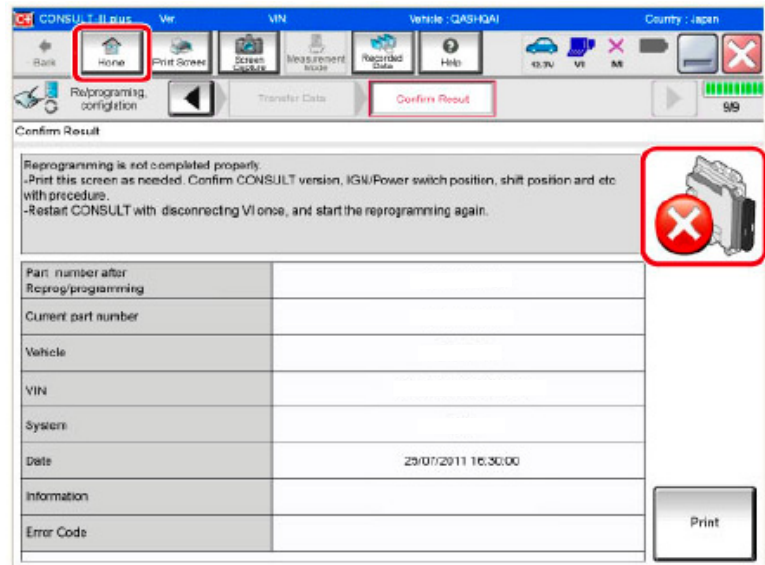


Figure 6

11. Follow the on-screen instructions to erase all DTCs.
12. When the entire reprogramming process is complete, the screen in Figure 7 will display.
13. Verify the before and after part numbers are different.
14. Print a copy of this screen (Figure 7) and attach it to the repair order for warranty documentation.
15. Select **Confirm**.

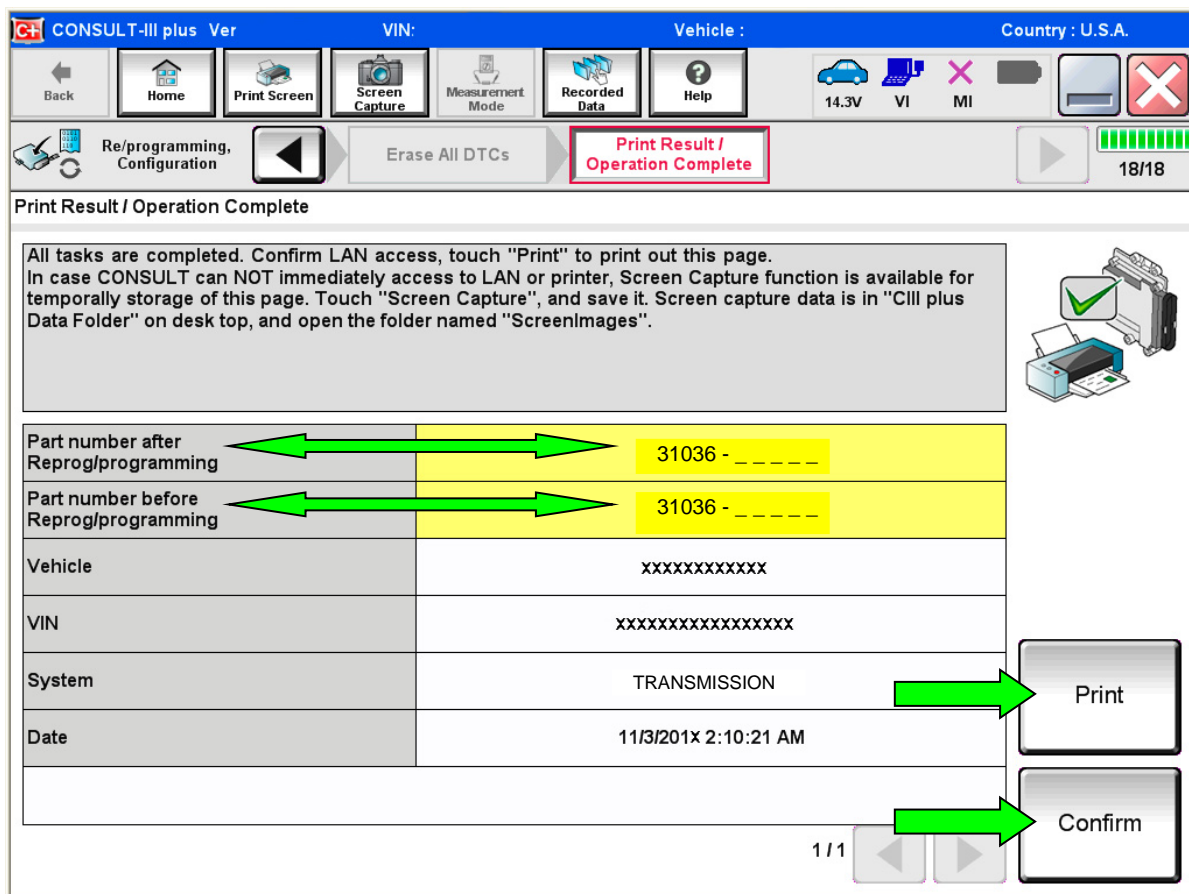


Figure 7

16. Close C-III plus.
17. Turn the ignition OFF.
18. Disconnect the VI from the vehicle.

NOTE: The information below is provided as **SERVICE INFORMATION** and is not part of the **SERVICE PROCEDURE** in this bulletin.

SERVICE INFORMATION

DTC detection drive pattern for P17F0 / P17F1

- This new diagnostic logic will monitor conditions in the CVT and provide a more precise diagnosis of any potential issues with the CVT.
- Figure 8, on the next page, illustrates conditions under which judder can be reproduced.
- Specific drive conditions that can be used to test for judder (shake, shudder, single or multiple bumps or vibration) are:
 1. Slowly accelerate from a stop (zero mph), applying only slight accelerator pedal (**0% - 10% throttle opening**) until 40 mph is reached.
 - During acceleration, torque converter engagement (full lock up) can occur between 20-35 mph.
 2. Prior to torque converter lock up, slowly modulate the accelerator pedal:
 - a. Decrease accelerator pedal pressure slowly, approaching a closed throttle position.
 - b. Smoothly and slowly reapply accelerator pedal pressure back to approximately 10% throttle opening.

IMPORTANT:

- Slight grade (climbing hill) may aid in performing the above drive conditions.
- DTC detection logic will require three events before storing a DTC.
- If DTC P17F1 or P17F0 is stored, refer to NTB15-084 for repair information.

- Figure 8, below, illustrates conditions under which judder can be reproduced.

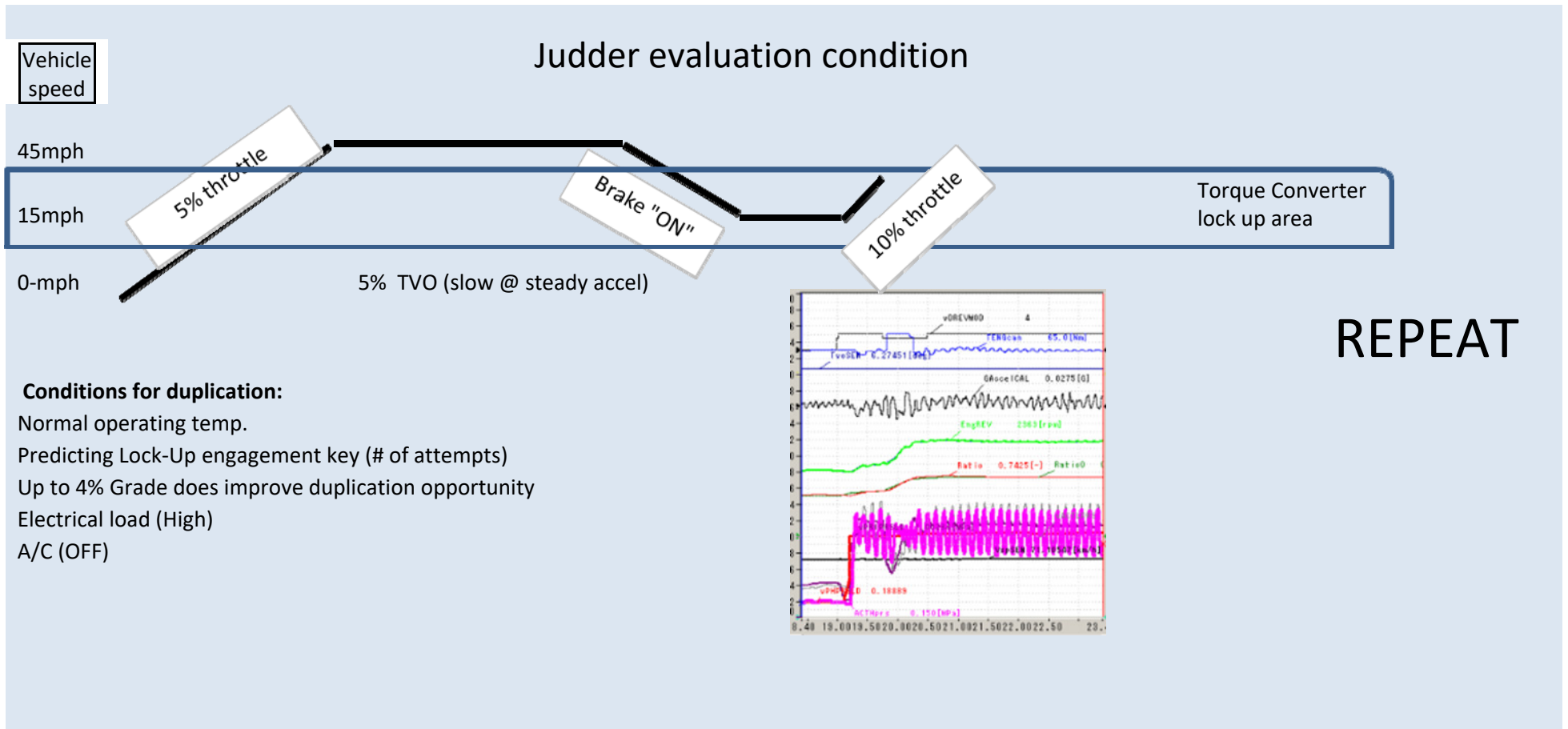


Figure 8

CLAIMS INFORMATION

Submit a Primary Part (PP) type line claim using the following claims coding:

DESCRIPTION	PFP	OP CODE	SYM	DIA	FRT
Reprogram Transmission Control Module	(1)	JE99AA	ZE	32	(2)

- (1) Use the VIN and the Electronic Parts Catalog to look up the Transmission Control Module part number (31036-XXXXX) for the vehicle you are working on and use as the PFP.
- (2) Reference the current Nissan Warranty Flat Rate Manual and use the indicated Flat Rate Time.

AMENDMENT HISTORY

PUBLISHED DATE	REFERENCE	DESCRIPTION
October 7, 2015	NTB15-083	Original bulletin published
May 17, 2022	NTB15-083A	Page 9 revised

