



# VOLUNTARY SERVICE CAMPAIGN

Classification: AT22-006	Reference: NTB22-057	Date: July 14, 2022
-----------------------------	-------------------------	------------------------

## VOLUNTARY EMISSION SERVICE CAMPAIGN 2021 ROGUE; ENGINE CONTROL MODULE, TRANSMISSION CONTROL MODULE, AND SHIFT CONTROL MODULE REPROGRAM

**CAMPAIGN ID #:** P2A07  
**APPLIED VEHICLES:** 2021 Rogue (T33)

**Check Service COMM or Dealer Business Systems (DBS)  
National Service History to confirm campaign eligibility.**

### INTRODUCTION

Nissan is conducting this voluntary emission service campaign, on certain specific model year 2021 Rogue vehicles, to reprogram the Engine Control Module (ECM), Transmission Control Module (TCM), and the Shift Control Module (SCM). This service will be performed at no charge to the customer for parts or labor.

### IDENTIFICATION NUMBER

Nissan has assigned identification number P2A07 to this campaign. This number must appear on all communication and documentation of any nature dealing with this campaign.

### DEALER RESPONSIBILITY

Dealers are to repair vehicles falling within range of this campaign that enter the service department. This includes vehicles purchased from private parties, vehicles presented by transient (tourists) owners, and vehicles in a dealer's inventory.

Bulletins are intended for use by qualified technicians, not 'do-it-yourselfers'. Qualified technicians are properly trained individuals who have the equipment, tools, safety instruction, and know-how to do a job properly and safely. **NOTE:** If you believe that a described condition may apply to a particular vehicle, DO NOT assume that it does. See your Nissan dealer to determine if this applies to your vehicle.

## SERVICE PROCEDURE

### NOTICE

Perform the following before starting the reprogramming procedure to prevent damage to the control unit.

- Connect the AC Adapter to the CONSULT PC.
- Connect the CONSULT PC to the Internet via Wi-Fi or a network cable.
- Ensure ASIST on the CONSULT PC has been synchronized (updated) to the current date and all CONSULT software updates (if any) have been installed.
- Turn OFF all external Bluetooth® devices (e.g., cell phones, printers, etc.) within range of the CONSULT PC and the VI. If Bluetooth® signal waves are within range of the CONSULT PC or VI during reprogramming, the reprogramming may be interrupted.
- Turn OFF all vehicle electrical loads.
- Connect a battery maintainer or smart charger, set to reflash mode or a similar setting, to ensure the battery voltage stays between 12.0 V and 15.5 V.

### HINT:

- Take the vehicle for a 10 minute drive in order to meet the following Idle Air Volume Learning conditions:
  - Engine coolant temperature: 70 - 100°C (158 - 212°F)
  - Battery voltage: More than 12.9 V (At idle)
  - Transmission: Warmed up
- When reprogramming is complete, you will be required to perform **Throttle Valve Closed Position, Idle Air Volume Learning, Accelerator Closed Position, and DTC Erase.**

## Reprogram the ECM

1. Using CONSULT-III, confirm the current ECM part number and write it on the repair order.
  - If it matches one of the part numbers in **Table 1**, continue to step 2 on page 3.
  - If it does not match one of the part numbers in **Table 1**, ECM reprogram is not required, skip to step 4 on page 3.

Table 1

MODEL	CURRENT ECM PART NUMBER: 23761-
Rogue	6RK0D, 6RK1D, 6RK2D, 6RK3D 6RK0E, 6RK1E, 6RK2E, 6RK3E

2. Reprogram the ECM.

**HINT:** If you are not familiar with the reprogramming procedure, *click here*. This will link you to the "**CONSULT REPROGRAMMING FOR ENGINE OR TRANSMISSION CONTROL MODULE (ECM OR TCM)**" general procedure.

3. After completing **Erase All DTCs**, print a copy of the CONSULT screen showing the before and after part numbers of the control unit and attach it to the repair order.

### Reprogram the TCM

4. Using CONSULT-III, confirm the current TCM part number and write it on the repair order.
  - If it matches one of the part numbers in **Table 2**, continue to step 5 below.
  - If it does not match one of the part numbers in **Table 2**, TCM reprogram is not required, skip to step 7 on page 4.

**Table 2**

<b>MODEL</b>	<b>CURRENT TCM PART NUMBER: 31039-</b>
Rogue	6RC5C, 6RC6B

5. Reprogram the TCM.
6. After completing **Erase All DTCs**, print a copy of the CONSULT screen showing the before and after part numbers of the control unit and attach it to the repair order.

## Confirm the Current Shift Control Module (SCM) Part Number

**IMPORTANT:** Before starting, make sure:

- ASSIST on the CONSULT PC has been synchronized (updated) to the current date.
- All CONSULT-III software updates (if any) have been installed.

### **NOTICE**

- Connect a battery maintainer or smart charger set to reflash mode or a similar setting. If the vehicle battery voltage drops below 12.0V or rises above 15.5V during reprogramming, the SCM may be damaged.
  - Be sure to turn OFF all vehicle electrical loads.  
If a vehicle electrical load remains ON, the SCM may be damaged.
  - Be sure to connect the AC Adapter.  
If the CONSULT PC battery voltage drops during reprogramming, the process will be interrupted and the SCM may be damaged.
  - Turn OFF all external Bluetooth® devices (e.g., cell phones, printers, etc.) within range of the CONSULT PC and the VI. If Bluetooth® signal waves are within range of the CONSULT PC or VI during reprogramming, reprogramming may be interrupted and the SCM may be damaged.
7. Connect the Vehicle Interface (VI) to the vehicle.
  8. Turn the ignition ON with the engine OFF.
  9. Start CONSULT-III plus (C-III plus) on the CONSULT PC.
    - The serial number will display when the VI is recognized (Figure 1 on page 5).

10. Select **Re/programming, Configuration**.

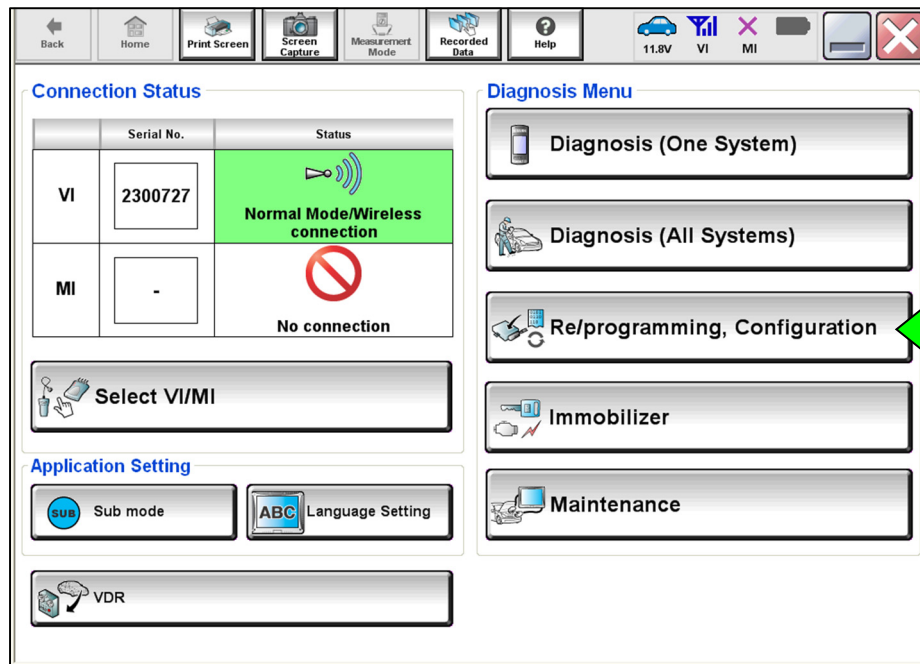


Figure 1

11. Check the box to confirm the precaution instructions have been read, and then select **Next**.

**NOTE:** Use the arrows (if needed) to view and read all precautions.

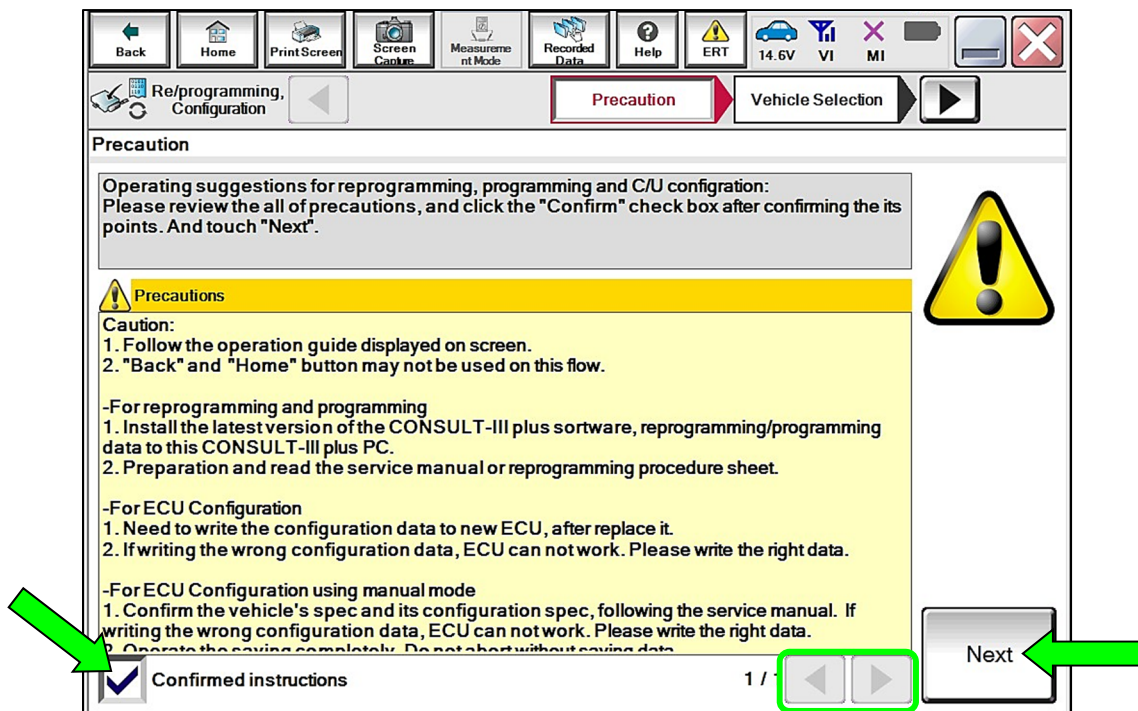


Figure 2

12. Select **Automatic Selection(VIN)**.

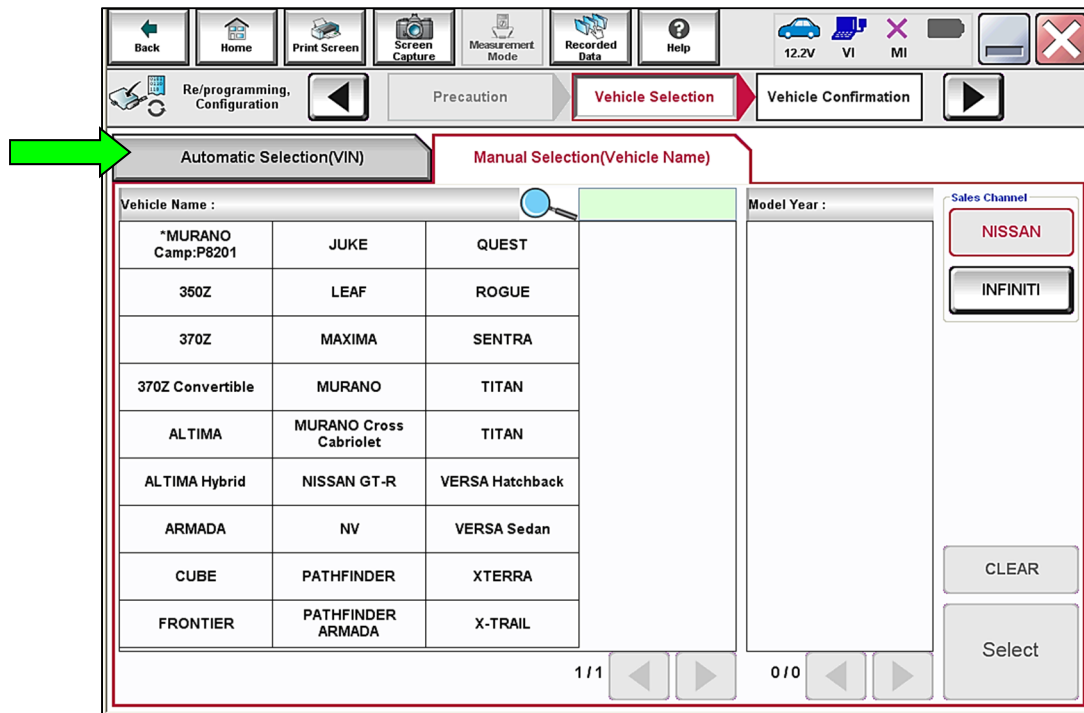


Figure 3

13. Confirm the **VIN or Chassis #** is correct, and then select **Confirm**.

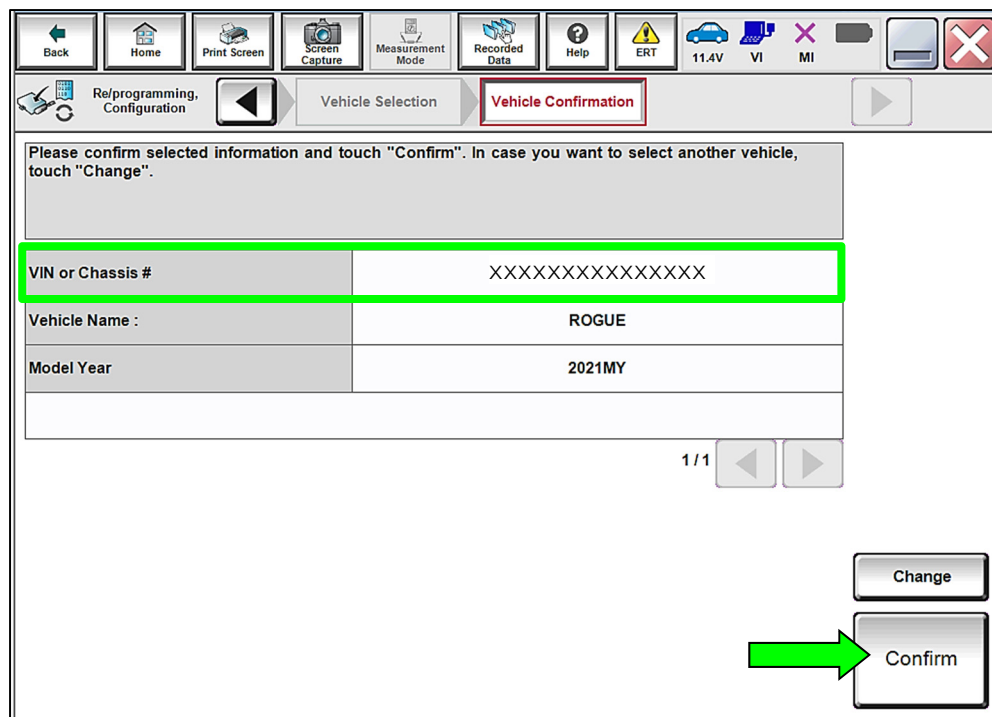


Figure 4

14. Confirm the VIN is correct for the vehicle, and then select **Confirm**.

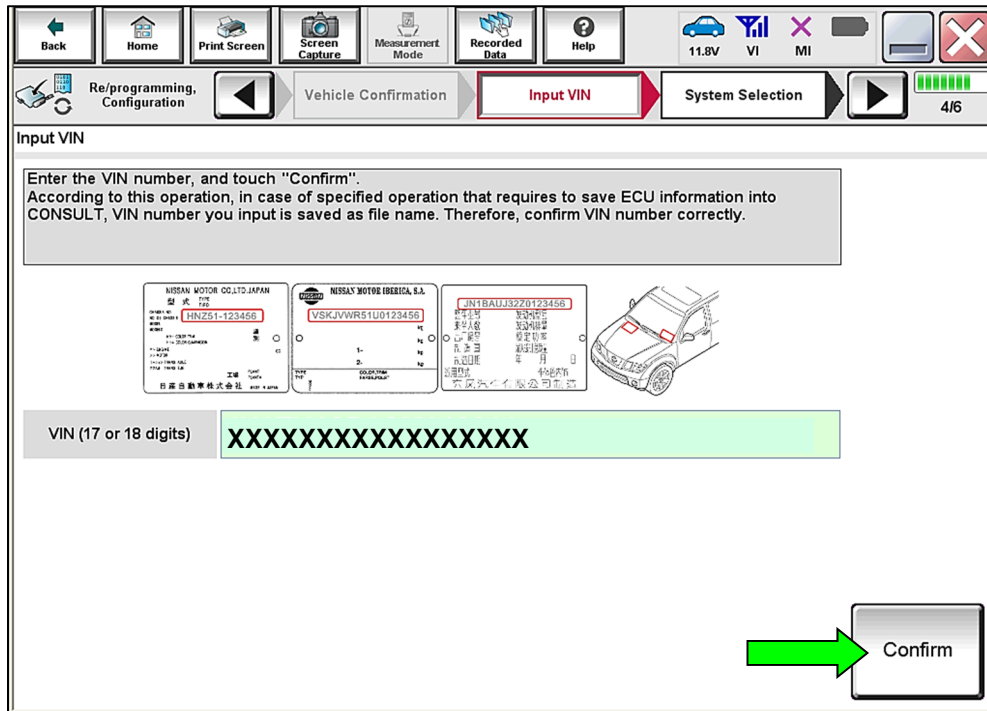


Figure 5

15. Select **SHIFT**.

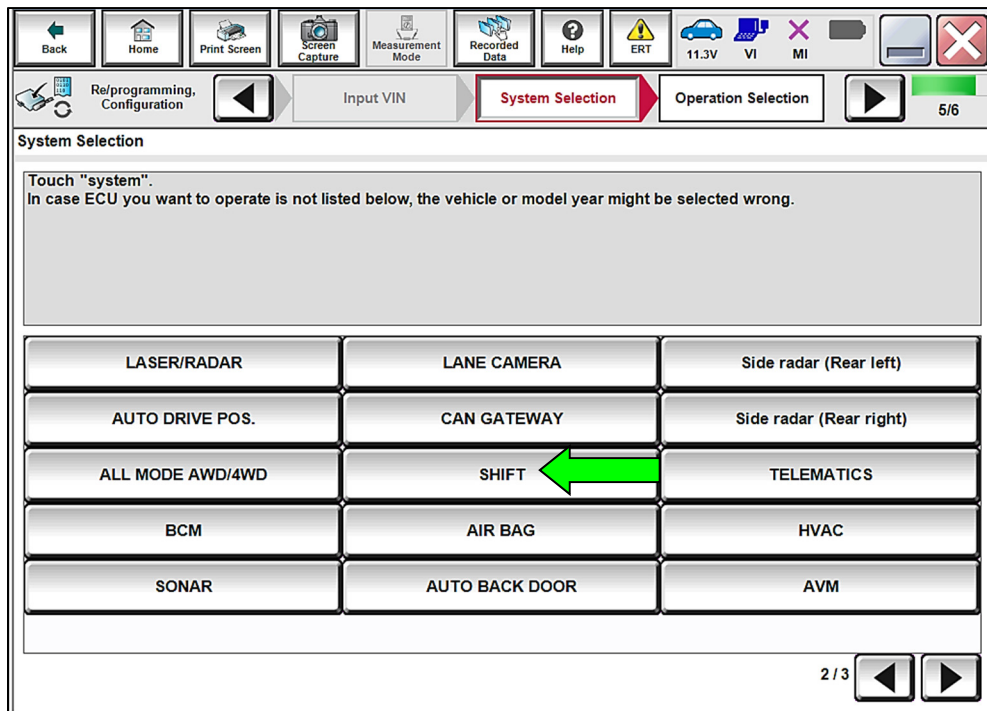


Figure 6

## Select Reprogramming.

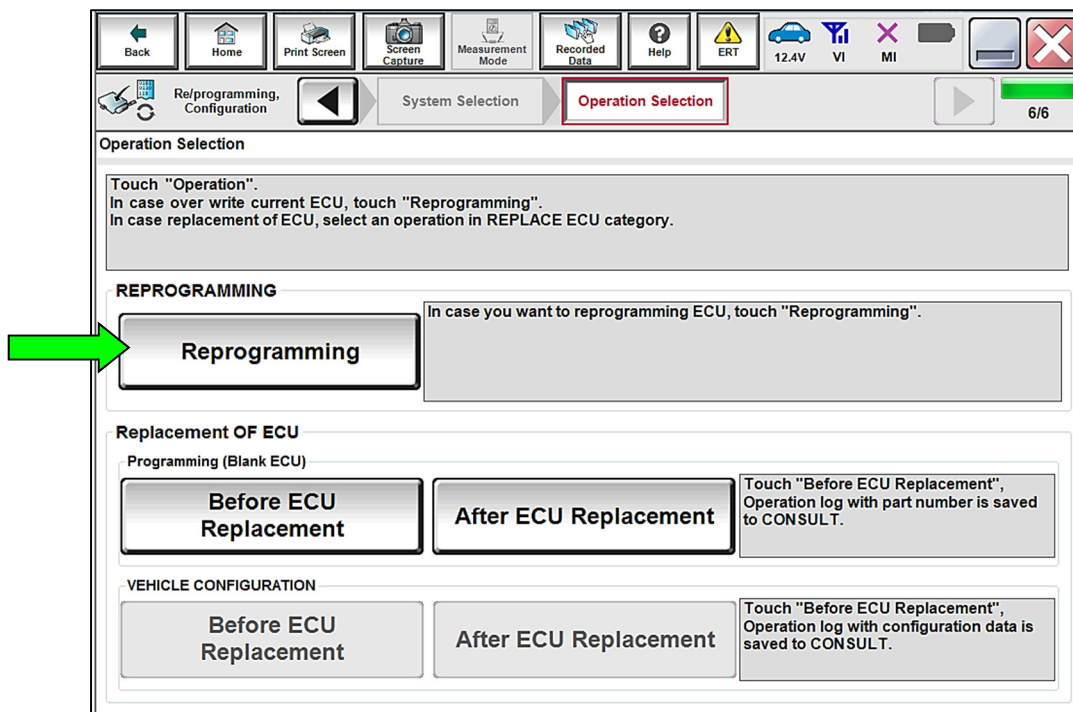


Figure 7

- Find the SCM **Part Number** and write it on the repair order, and then select **Save**.  
**NOTE:** This is the current Part Number (P/N).

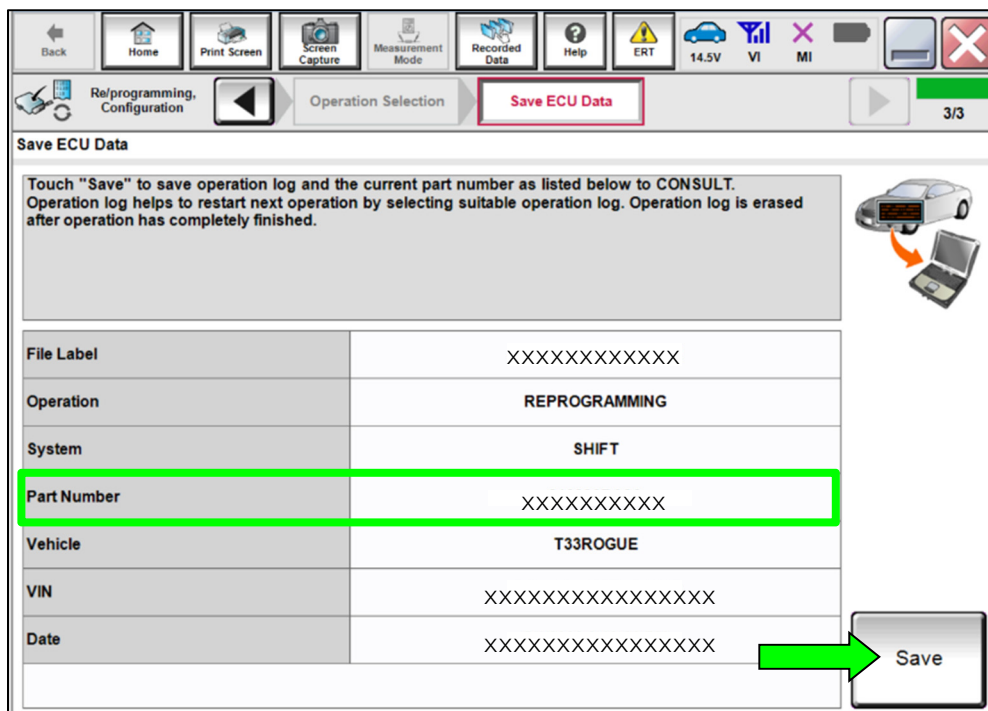


Figure 8



17. Compare the Part Number you wrote down in step 16 on page 8 to the numbers in the **CURRENT SCM PART NUMBER** column in **Table 3** below.
- If it matches the part number in **Table 3**, continue to step 18 below.
  - If it does not match one of the part numbers in **Table 3**, SCM reprogram is not required, skip to step 36 on page 18.

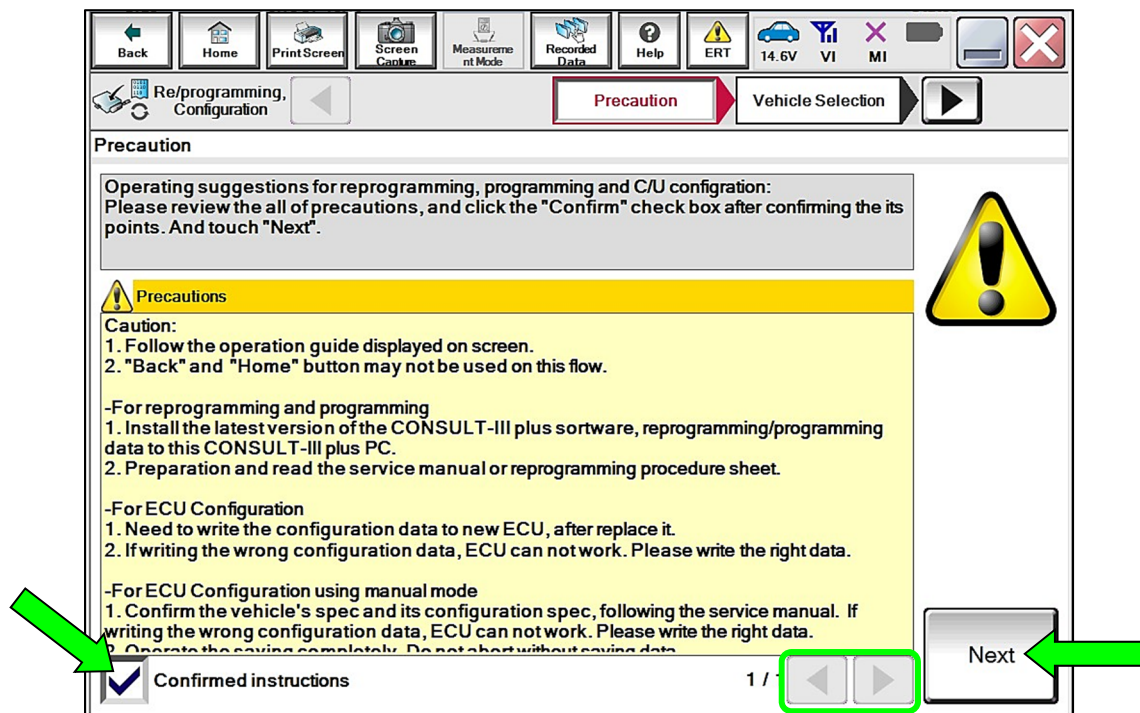
**Table 3**

MODEL	CURRENT SCM PART NUMBER: 31038-
Rogue	6RA2A

## Reprogram the SCM

18. Check the box to confirm the precaution instructions have been read, and then select **Next**.

**NOTE:** Use the arrows (if needed) to view and read all precautions.



**Figure 9**

- 19. Confirm the battery charger is ON and the battery voltage is between 12V-15.5V, and then select **Next**.

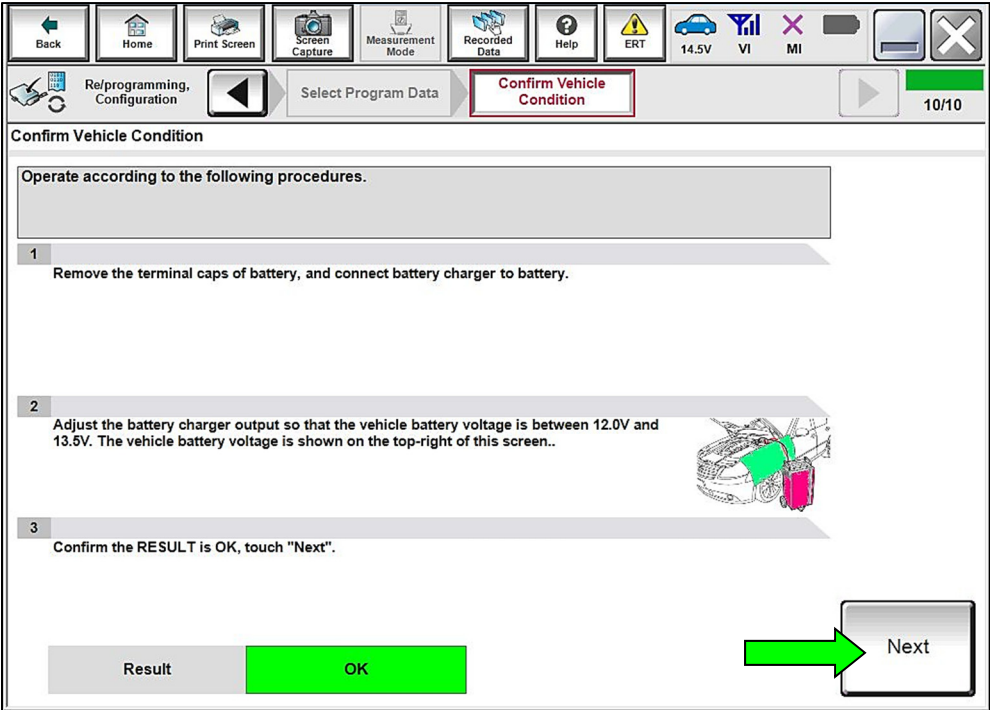


Figure 10

- 20. Confirm the **Judgement** for all the **Monitor Items** are "OK", and then select **Start**.

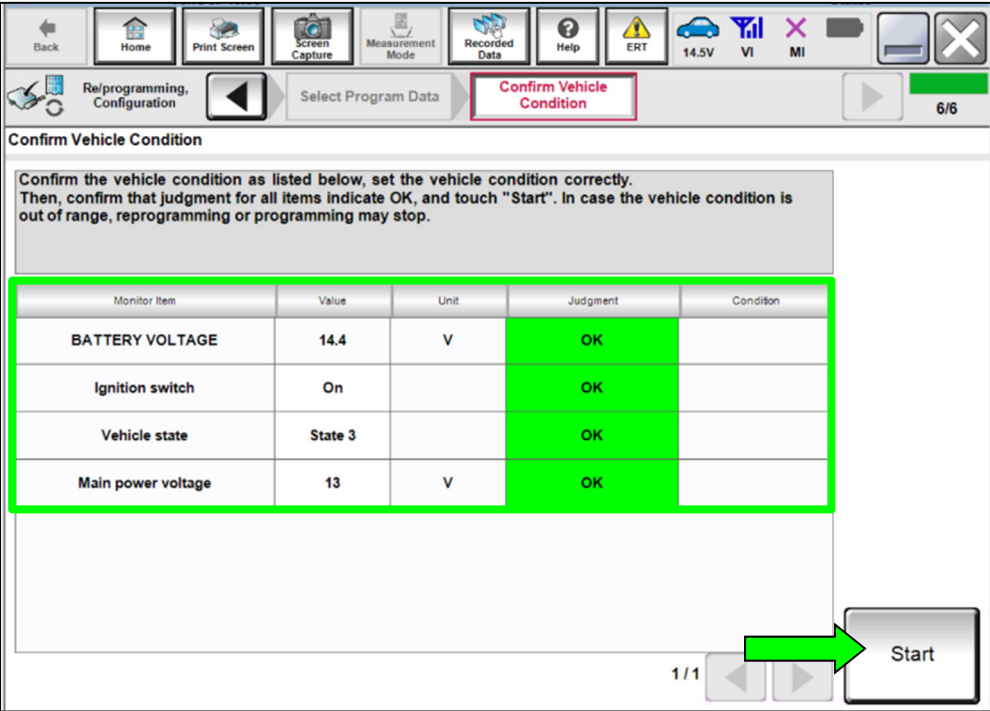


Figure 11

21. Select **USA/CANADA Dealers** from the drop down menu, and then select **OK**.

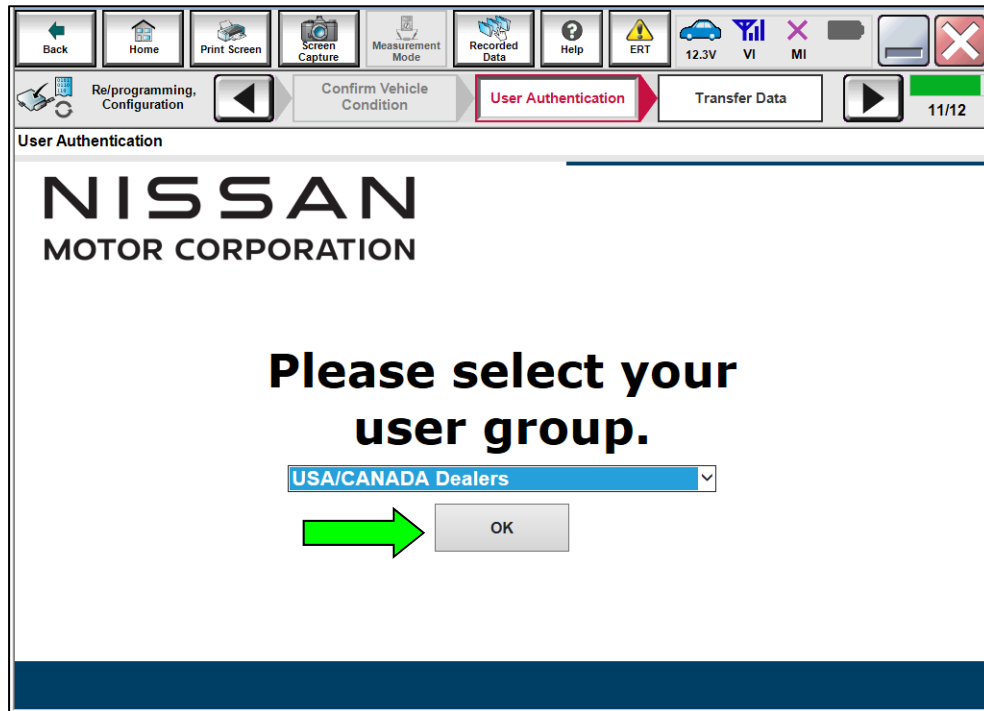


Figure 12

22. Login using your NNAnet credentials, and then select **Submit**.

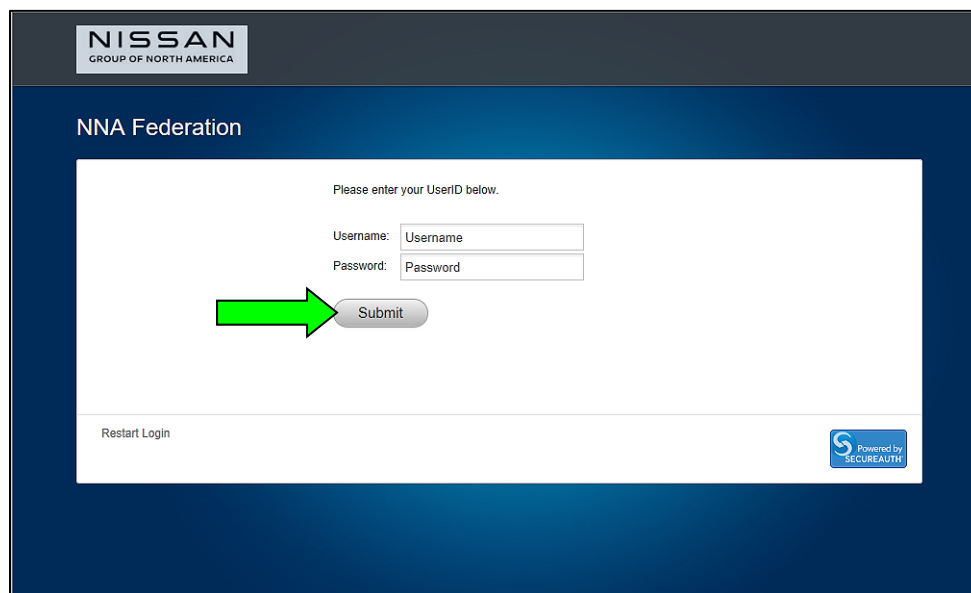


Figure 13

23. Allow **Transfer Data** to complete.

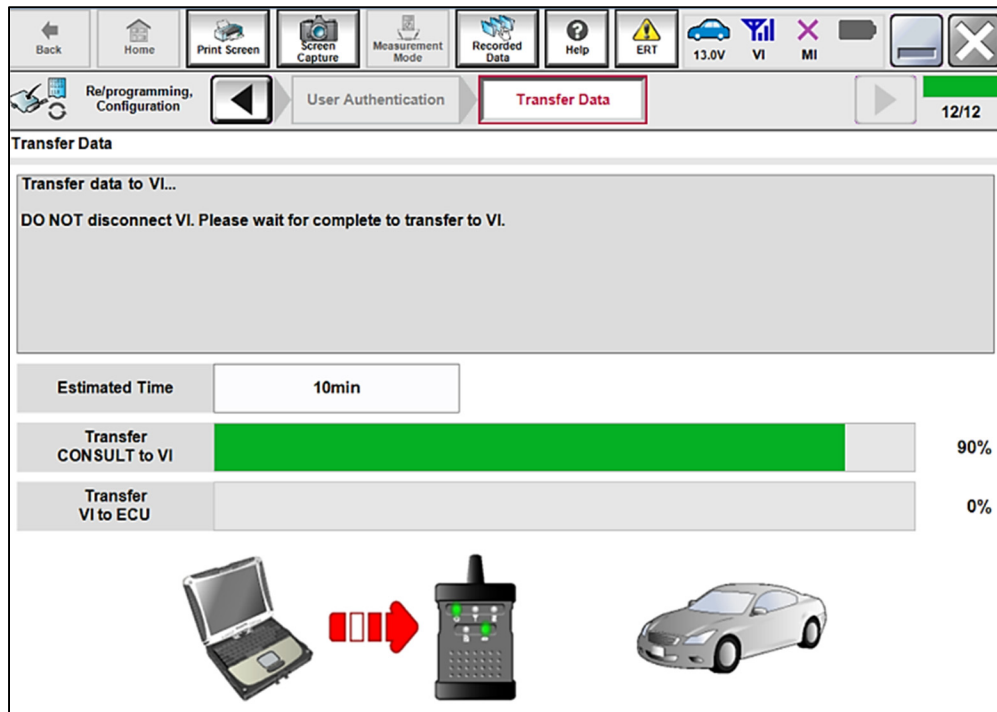


Figure 14

24. Once the reprogramming completes, select **Next**.

**NOTE:**

- If the screen in Figure 15 does not display (indicating that reprogramming did not complete), refer to the information on the next page.
- Additional steps/operations are required before CONSULT will provide the final reprogramming confirmation report. Continue with the reprogramming procedure on page 14.

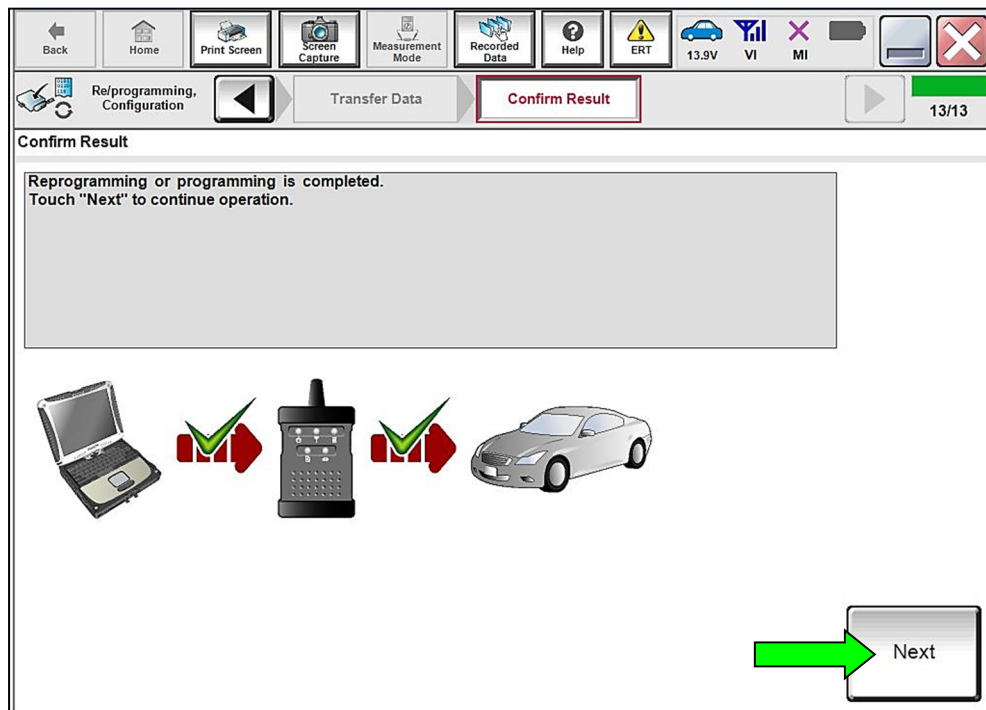


Figure 15

## SCM Recovery:

If reprogramming does not complete and the “!” symbol displays as shown in Figure 16:

- Check battery voltage (12.0 – 15.5V).
- Ignition is ON, Engine is OFF.
- External Bluetooth® devices are OFF.
- All electrical loads are OFF.
- Select **Retry** and follow the on screen instructions.

**NOTE:** **Retry** may not go through on first attempt and can be selected more than once.

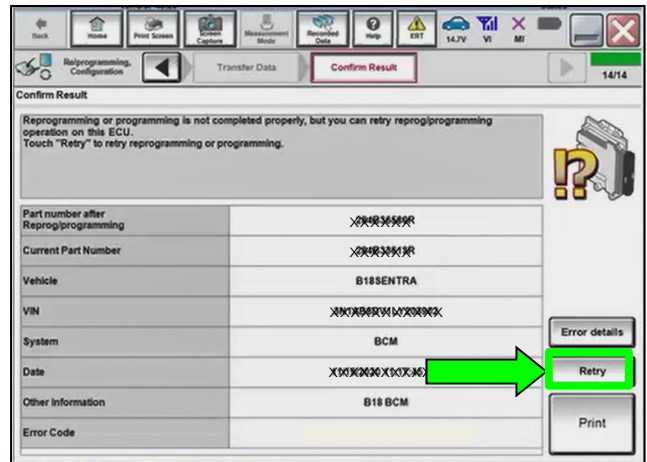


Figure 16

If reprogramming does not complete and the “X” symbol displays as shown in Figure 17:

- Do not disconnect the VI or shut down C-III plus if reprogramming does not complete.
- Check battery voltage (12.0 – 15.5V).
- CONSULT A/C adapter is plugged in.
- Ignition is ON, Engine is OFF.
- Transmission in Park.
- All C-III plus / VI cables are securely connected.
- All C-III plus updates are installed.
- Select **Home**, and then restart the reprogram procedure from the beginning.

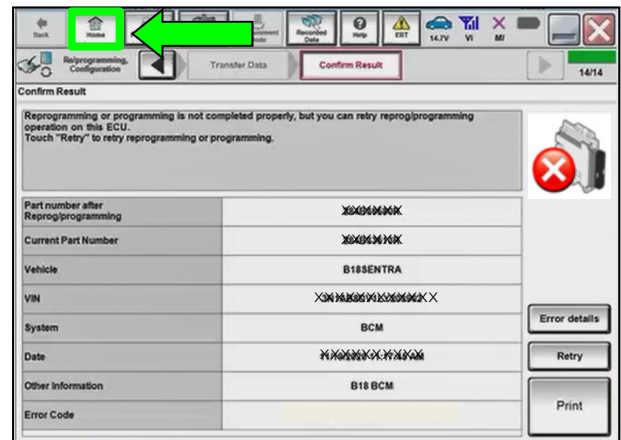


Figure 17

25. Perform **Erase All DTCs**.

a. Follow the on-screen instructions as shown in Figure 18 and Figure 19.

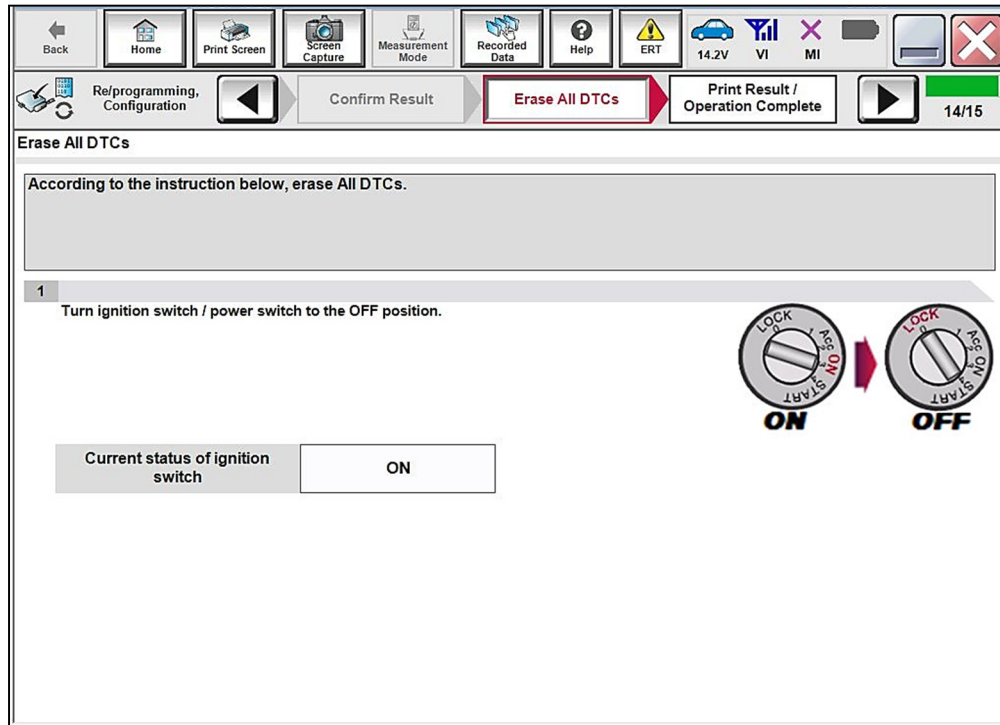


Figure 18

b. Select **Next**.

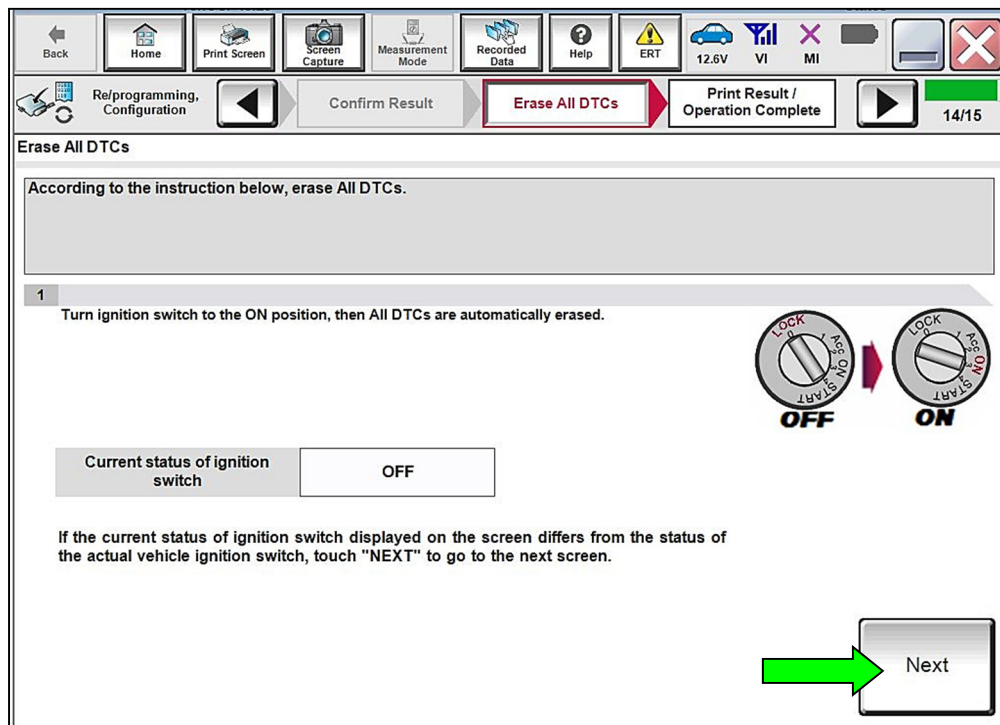


Figure 19

26. Allow **Erase All DTCs** to complete.

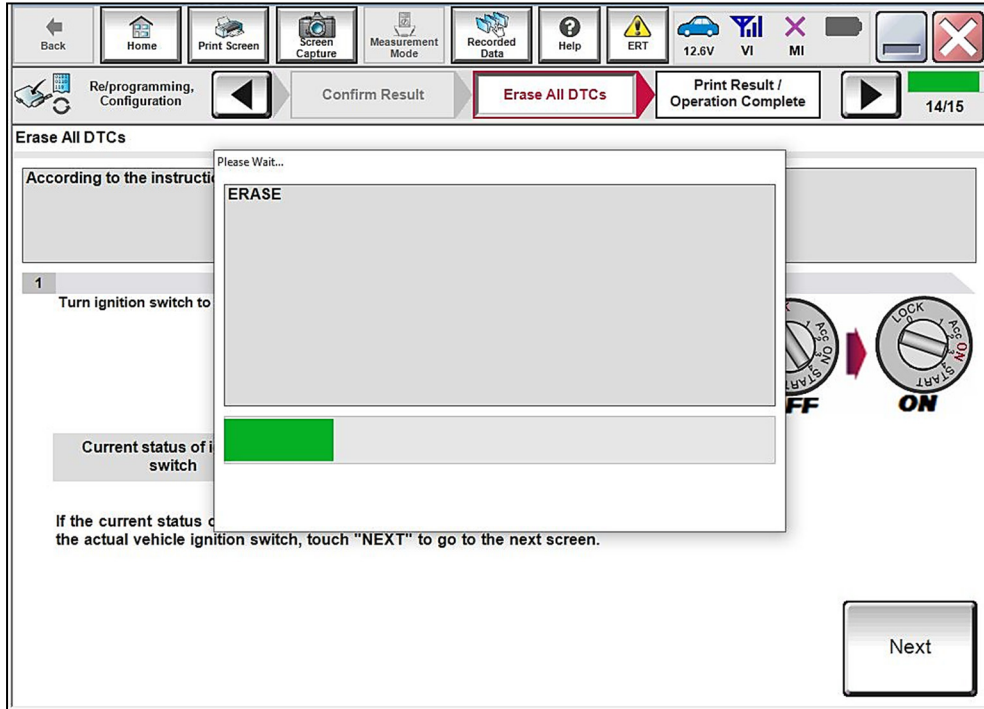


Figure 20

27. Verify the **Part number after Reprog/programming** and **Part number before Reprog/programming** are different, select **Print** and attach the reprogramming results to the repair order, and then select **Confirm**.

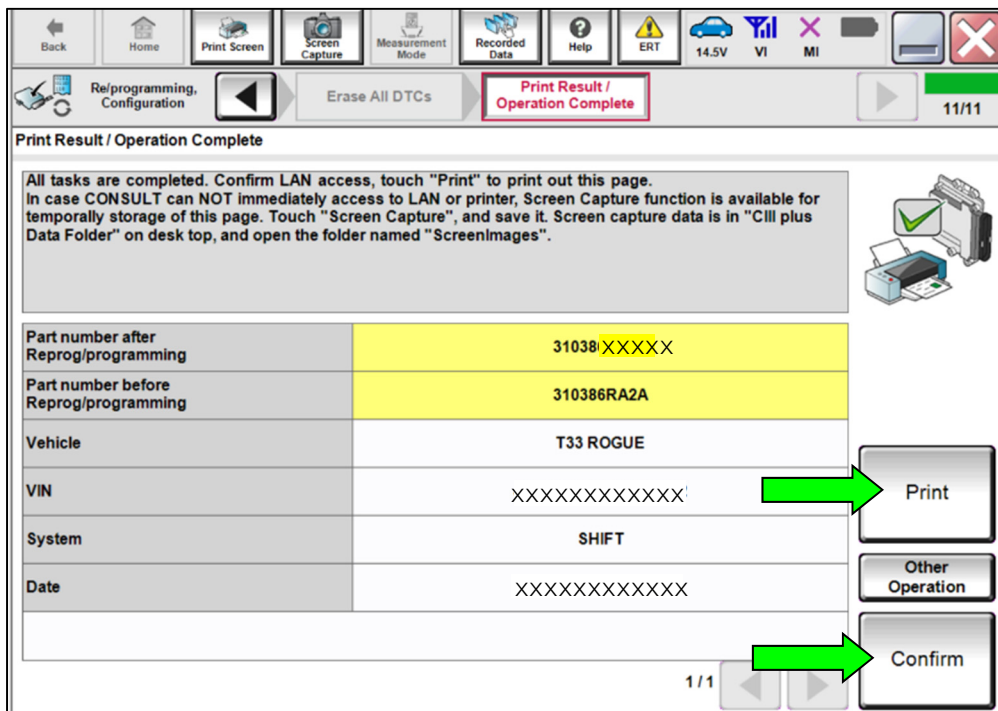


Figure 21

28. Select **Home**.

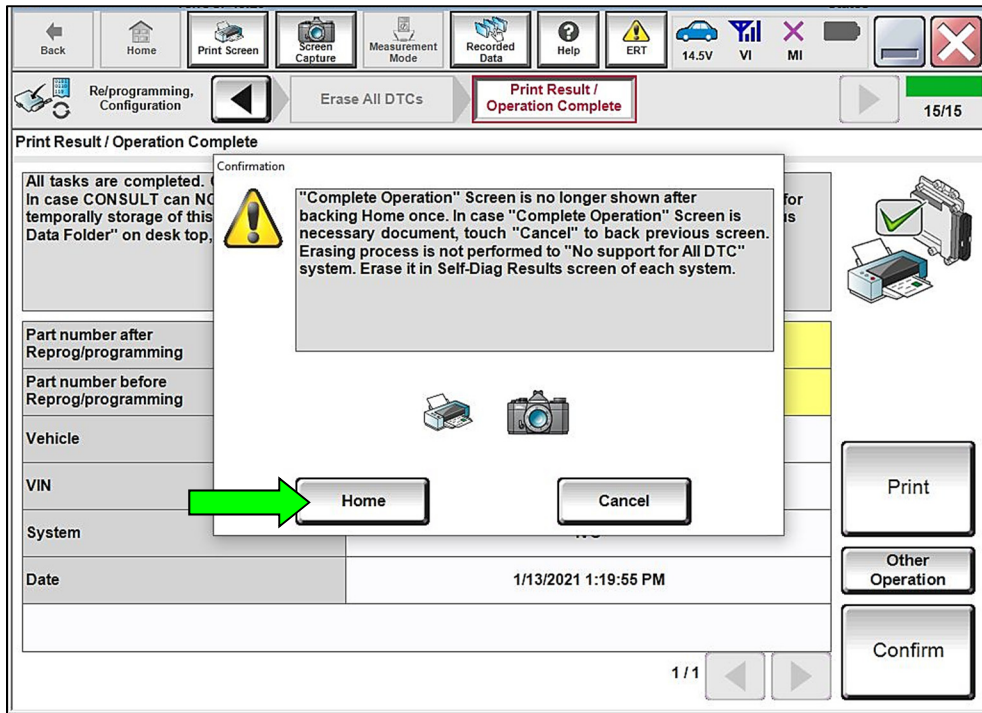


Figure 22

29. Select **Diagnosis (All Systems)**.

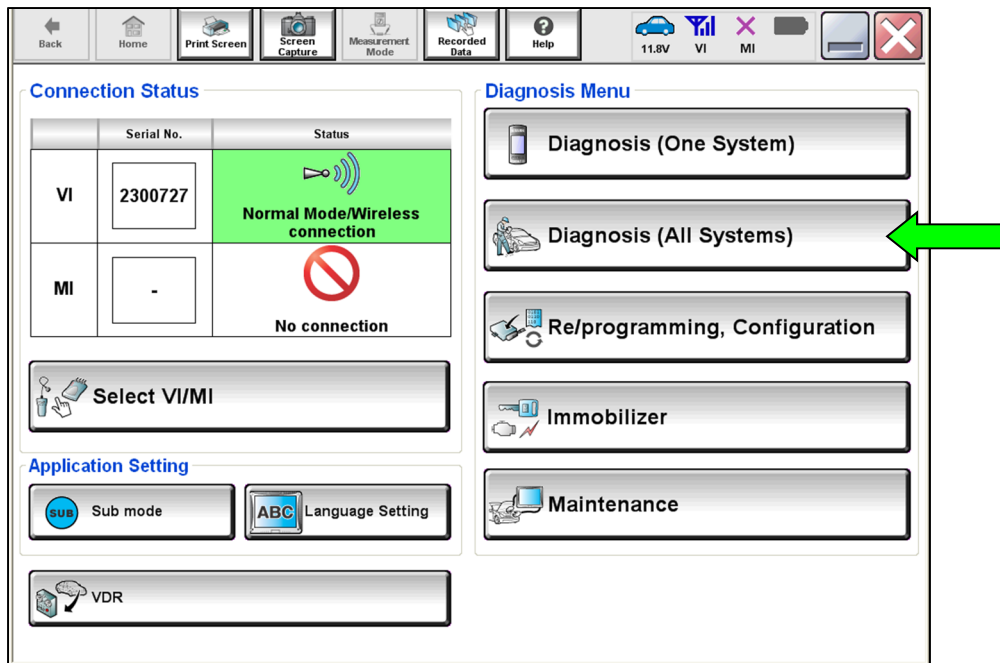


Figure 23



30. Select **TRANSMISSION**.

**NOTE:** If a DTC is present, turn the ignition OFF for 10 seconds. After the 10 second wait, turn the ignition ON, and then erase the DTCs.

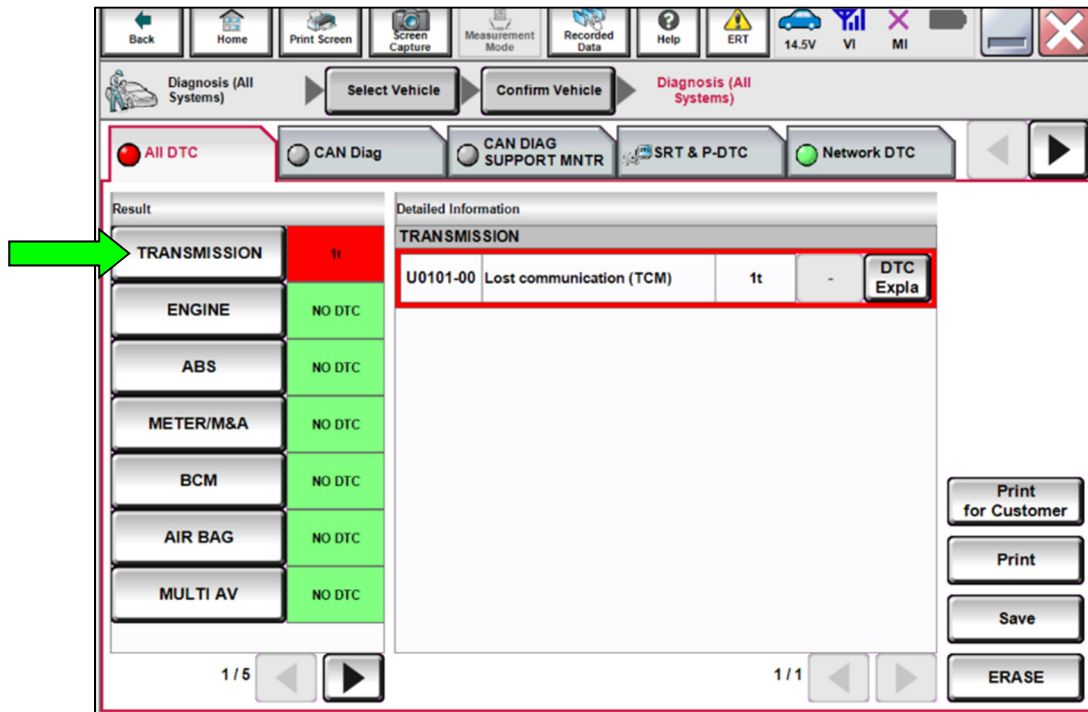


Figure 24

31. Select **Work support**, **ERASE LEARNING VALUE**, and then select **Start**.

- Follow the on-screen instructions to erase the learning values, and then select **End** to return to the **Work support** menu.

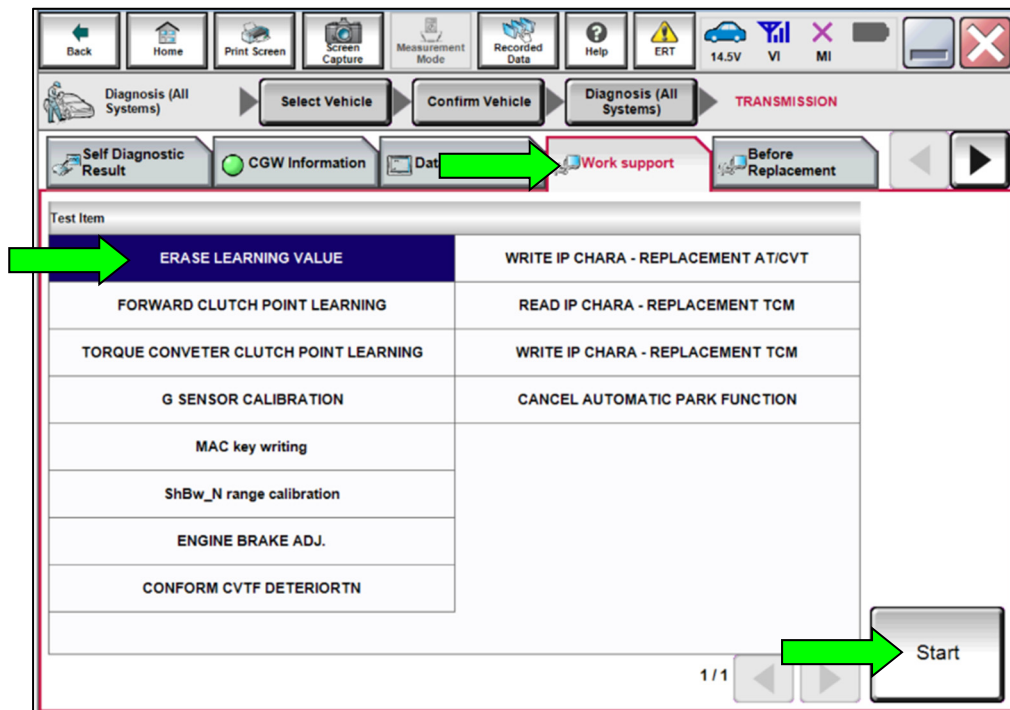


Figure 25

32. Select **FORWARD CLUTCH POINT LEARNING**, and then select **Start** (Figure 25 on page 17).

**IMPORTANT:** The following conditions must be met before proceeding with **FORWARD CLUTCH POINT LEARNING**:

- Accelerator Pedal: Not Depressed
- Brake Pedal: Depressed
- Selector Level: N Position
- Vehicle Speed: 0 mph
- A/C Switch: OFF
- CVT Fluid Temperature: 60-100°C (**140-212°F**)
- Engine Coolant Temperature: 70-110°C (**158-230°F**)
- No DTCs Detected

33. Perform **FORWARD CLUTCH POINT LEARNING** following the steps below:
- a. After meeting the conditions shown in step 32, select **Start**.
  - b. Place the gear selector into Drive and allow the learning to complete.
  - c. After learning has completed, select **End** to return to the **Work support** menu.
  - d. Select **FORWARD CLUTCH POINT LEARNING** and select **Start**.
  - e. Place the gear selector into Neutral and select **Start**.
  - f. Place the gear selector into Reverse and allow the learning to complete.
  - g. Place the gear selector into Park.
  - h. Touch **End** to return to the work support menu.

34. Perform **TORQUE CONVERTER CLUTCH POINT LEARNING**.

- Refer to the ESM: **TRANSMISSION & DRIVELINE > TRANSAXLE & TRANSMISSION > CVT: GE0F14A > BASIC INSPECTION > TORQUE CONVERTER CLUTCH POINT LEARNING > Work Procedure**

35. Perform **SELECT LEARNING**.

- Refer to the ESM: **TRANSMISSION & DRIVELINE > TRANSAXLE & TRANSMISSION > CVT: GE0F14A > BASIC INSPECTION > SELECT LEARNING > Work Procedure**

36. Remove the battery maintainer/smart charger.

37. Close the C-III plus application.

38. Remove the VI from the vehicle.

## CLAIMS INFORMATION

Submit a "CM" line claim using the following claims coding:

CAMPAIGN ("CM") ID	DESCRIPTION	OP CODE	FRT
P2A07	Reprogram the Engine Control Module (ECM), Transmission Control Module (TCM), and Shift Control Module (SCM)	P2A070	1.5

## AMENDMENT HISTORY

PUBLISHED DATE	REFERENCE	DESCRIPTION
July 14, 2022	NTB22-057	Original bulletin published

