



INFINITI

TECHNICAL SERVICE BULLETIN

Classification:

KS22-005

Reference:

ITB22-029

Date:

July 25, 2022

INTELLIGENT KEY DOOR LOCK BUTTONS INOPERATIVE AFTER REMOTE ENGINE START KIT INSTALLATION

APPLIED VEHICLES: 2022 QX60 (L51)

APPLIED GRADES: PURE

SERVICE INFORMATION

When performing step 3.19 of the **Remote Engine Start_QX60_T99K1 6SA00** on an **APPLIED VEHICLE** per the Accessory Installation Instructions on ASIST (Figure 1), there will be two (2) buttons labeled **REMOTE ENGINE STARTER** under **Work support** (Figure 2 on page 2). Choosing the incorrect button will result in the Intelligent Key door lock buttons to become inoperative.

Follow the **SERVICE PROCEDURE** outlined in this bulletin to determine which **REMOTE ENGINE STARTER** button to select when performing step 3.19 of the **Remote Engine Start_QX60_T99K1 6SA00** install.

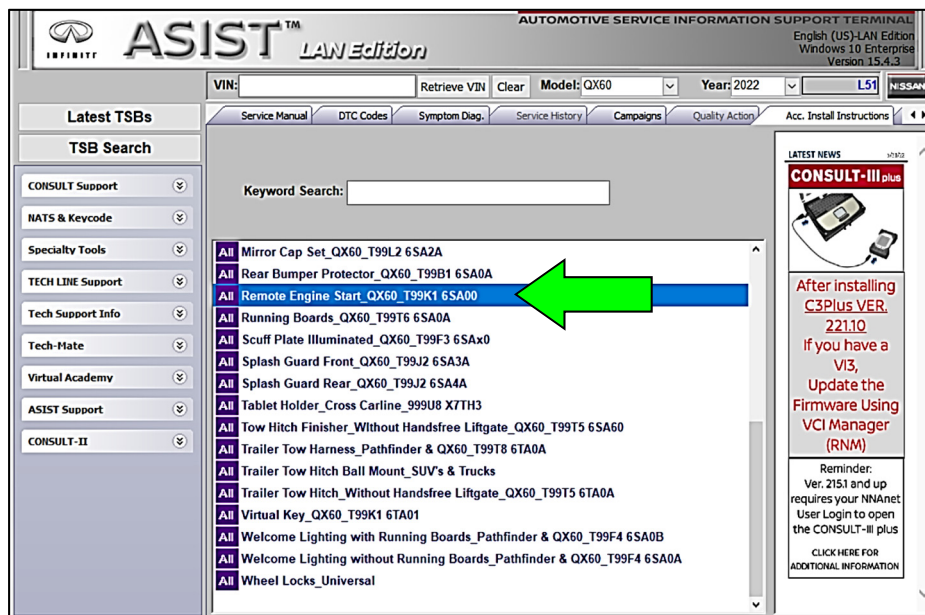


Figure 1

Bulletins are intended for use by qualified technicians, not 'do-it-yourselfers'. Qualified technicians are properly trained individuals who have the equipment, tools, safety instruction, and know-how to do a job properly and safely. **NOTE:** If you believe that a described condition may apply to a particular vehicle, DO NOT assume that it does. See your Infiniti retailer to determine if this applies to your vehicle.

SERVICE PROCEDURE

IMPORTANT: If you have tried installation of the **Remote Engine Start_QX60_T99K1 6SA00** and the Intelligent Key lock buttons no longer work, then the incorrect **REMOTE ENGINE STARTER** button was selected and the Intelligent Key Control Unit will need to be reset prior to proceeding.

Intelligent Key Control Unit reset process:

- a. Re-register the original Intelligent Keys.
 - b. Reconfigure the Intelligent Key Control Unit per the ESM process.
 - o Refer to the ESM: **BODY EXTERIOR, DOORS, ROOF & VEHICLE SECURITY > DOOR & LOCK > BASIC INSPECTION > CONFIGURATION (INTELLIGENT KEY UNIT) > Work Procedure**
1. Select one of the **REMOTE ENGINE STARTER** buttons, and then select **Start**.

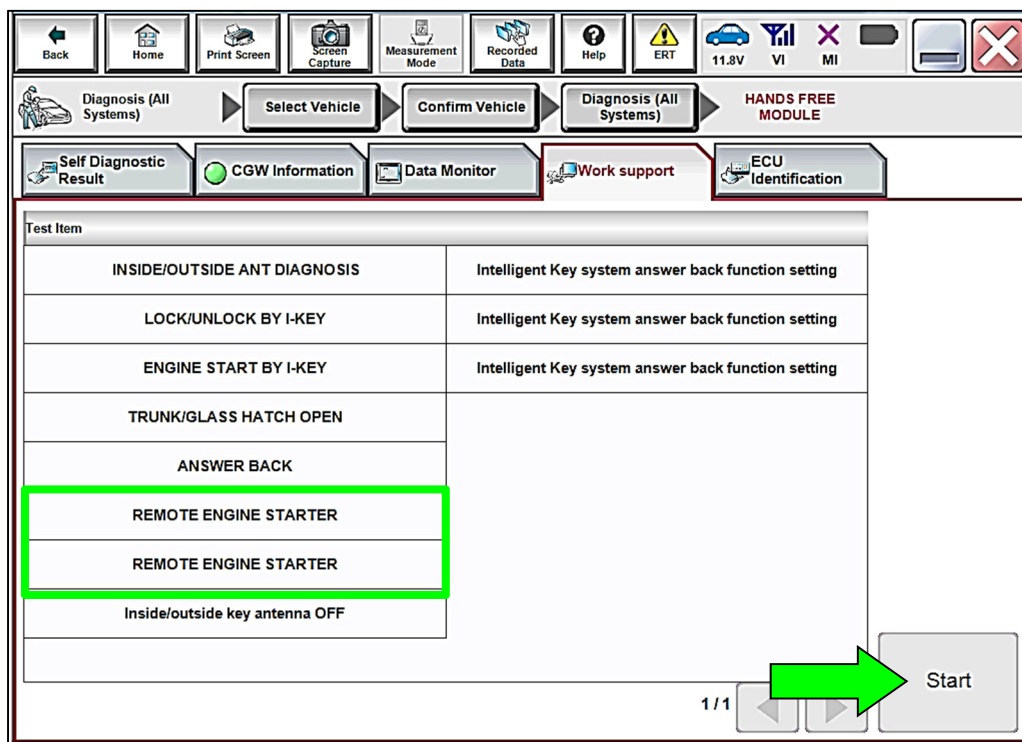


Figure 2

2. Confirm the **Current status** is “Off” (Figure 3).

- If the **Current status** is “Off”, proceed to step 3.20 of the **Remote Engine Start_QX60_T99K1_6SA00** of the Accessory Installation Instructions on ASIST.
- If the **Current status** is blank (Figure 4), select **End** to return to the **Work support** main screen (Figure 2 on page 2), and then select the other **REMOTE ENGINE STARTER** button.

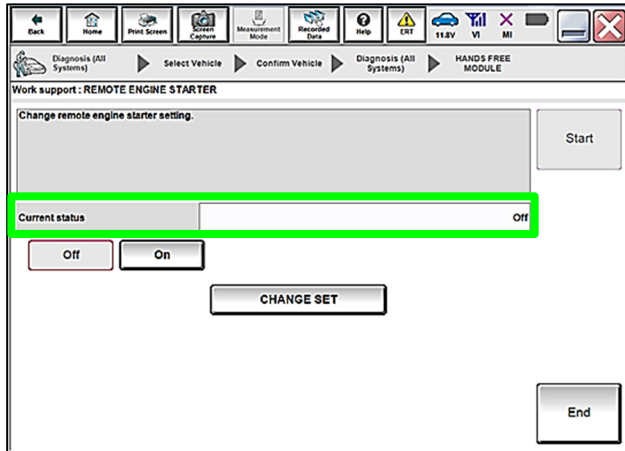


Figure 3

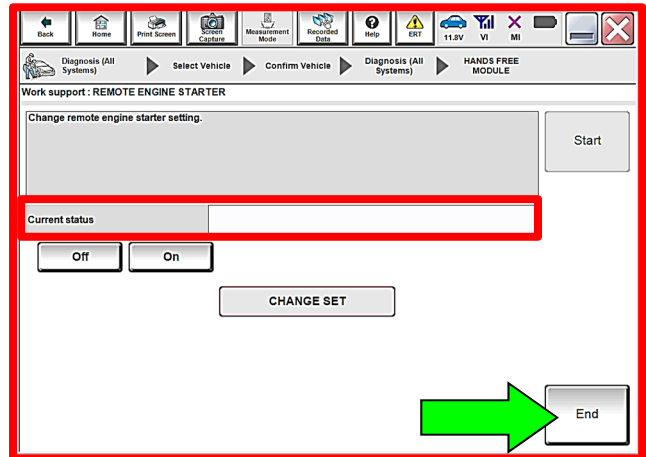


Figure 4

AMENDMENT HISTORY

PUBLISHED DATE	REFERENCE	DESCRIPTION
July 25, 2022	ITB22-029	Original bulletin published