

Various Vehicles with 3G VTS – Engine Start Inhibited and Fault Code Present

Vehicles Affected

Models	Model Year	Model Type	VIN Range	Vehicle-Specific Equipment
Panamera	As of 2013 up to 2016	970	N/A	Vehicle Tracking System (VTS)
911	As of 2013 up to 2019	991	N/A	Vehicle Tracking System (VTS)
718	As of 2017 up to 2019	982	N/A	Vehicle Tracking System (VTS)
918 Spyder	2015	918	N/A	Vehicle Tracking System (VTS)
Cayenne	As of 2013 up to 2018	92A	N/A	Vehicle Tracking System (VTS)
Macan	As of 2014 up to 2019	95B	N/A	Vehicle Tracking System (VTS)

Revision History

Revision	Release Date	Changes
0	July 6, 2022	Original document

Condition

The customer reports the engine will not start and the customer must seek roadside assistance. The issue is permanent without workshop intervention.

The workshop confirms the customer complaint and notes fault codes in the front and rear BCMs.

Sample fault codes:

Front-end electronics 80530F - VTS, restart inhibit
 Rear-end electronics 805108 - VTS, authentication failed

Technical Background

The root cause for this issue is a malfunction of the VTS ECU. Infrequently, a battery draw may also accompany this malfunction.

Service Information

Please note the following repair steps. The sequence is important.

The goal of this repair is to put the vehicle into a setting where it will ignore the VTS unit. In this setting, the engine immobilizer disregards VTS input. Once the workshop confirms this setting, the technician can remove the faulty VTS unit without replacing it.

Reference *TI Group 9 180/21 WMM7 - Replacing VTS Control Unit* for associated work instructions, labor operations, and parts information for all applicable vehicle platforms.

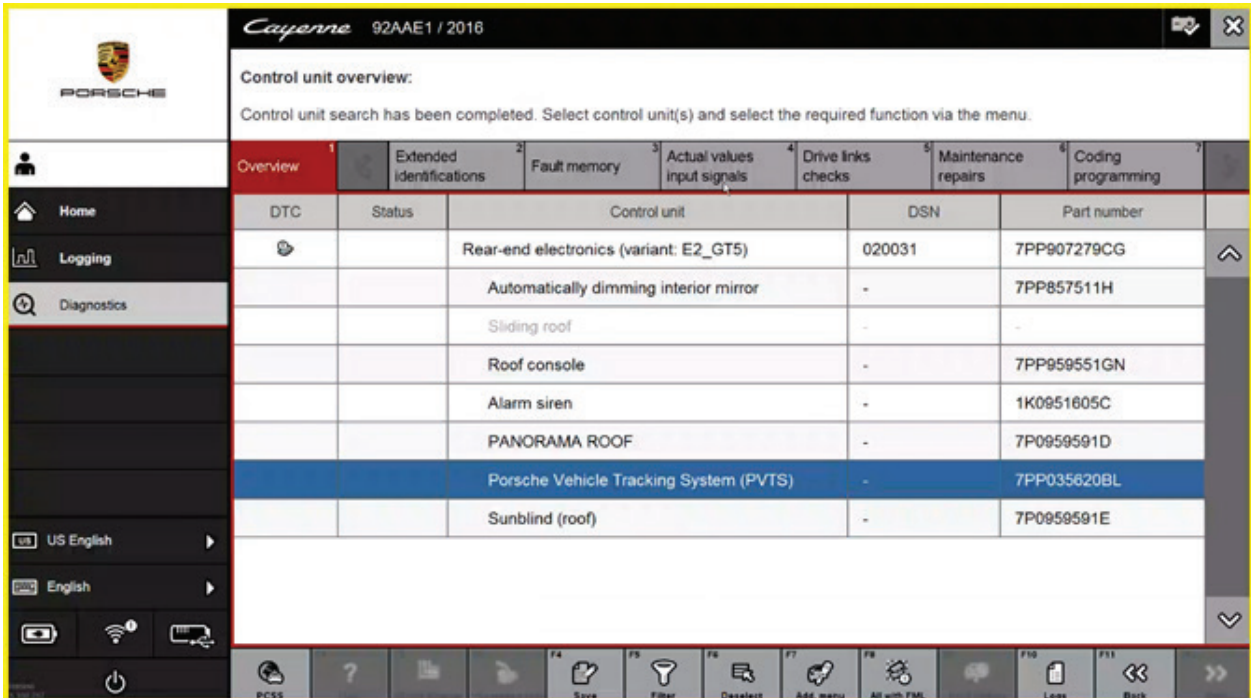
Repair Steps:

1. **Confirm the no-start condition occurred and telltale fault codes are present.** Do not perform this repair otherwise.
2. **Verify the vehicle is equipped with 3G VTS.** All affected combinations of part number, software version, and hardware version are in the table below. Confirm this information in the PIWIS tester.

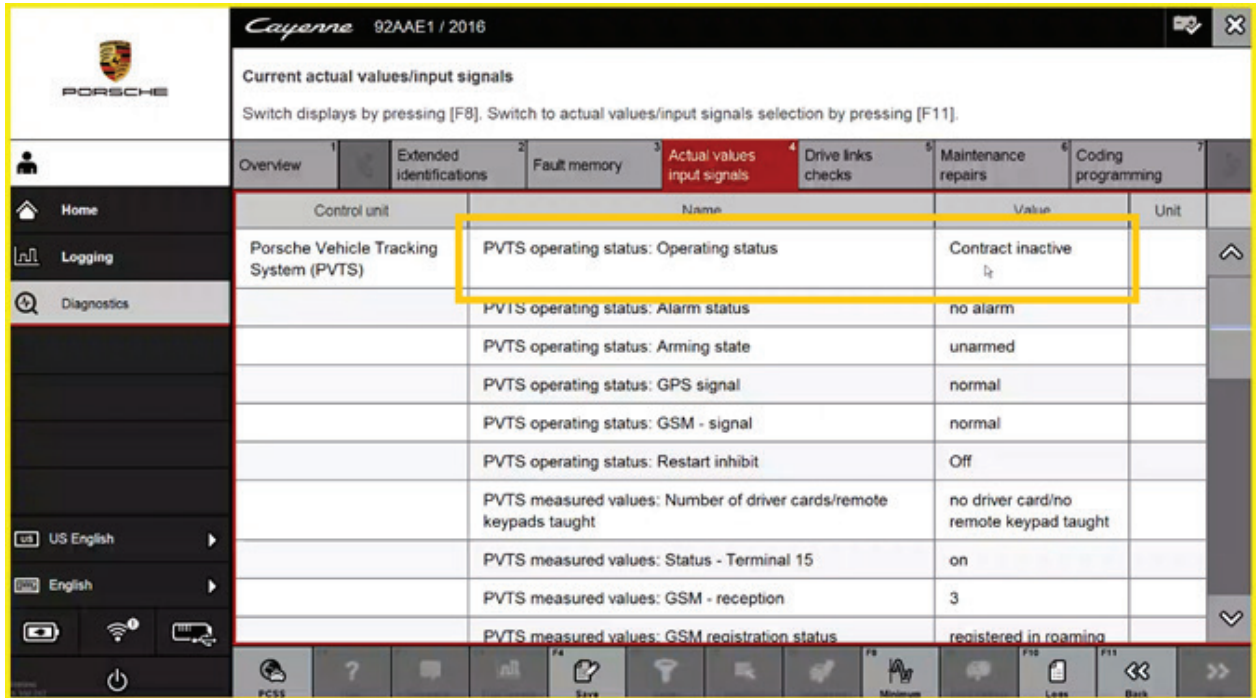
Software Version	Hardware Version	Part Number
7.00	16	7PP.035.620.BC
8.10	15	7PP.035.620.BL
8.10	16	7PP.035.620.CE*
8.20	17	7PP.035.620.DT*

- About 95% of cases have these part numbers.

3. **Confirm the VTS subscription is inactive.**
 - a. Using the PIWIS tester, select "Rear-end electronics" and click "Next (F12)."
 - b. Under Rear-end electronics, select "Porsche Vehicle Tracking System," and unselect everything else.



c. Click "Actual values, Input signals."

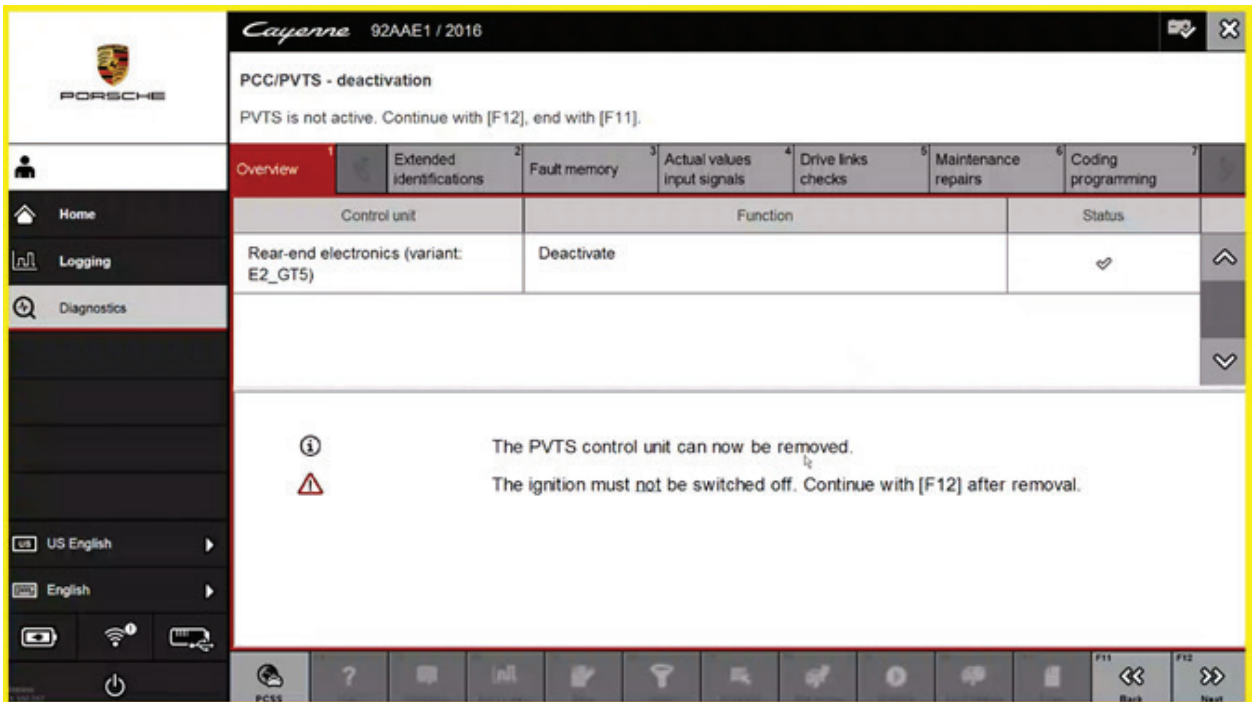


d. The value for "PVTS operating status" must be "Contract inactive."

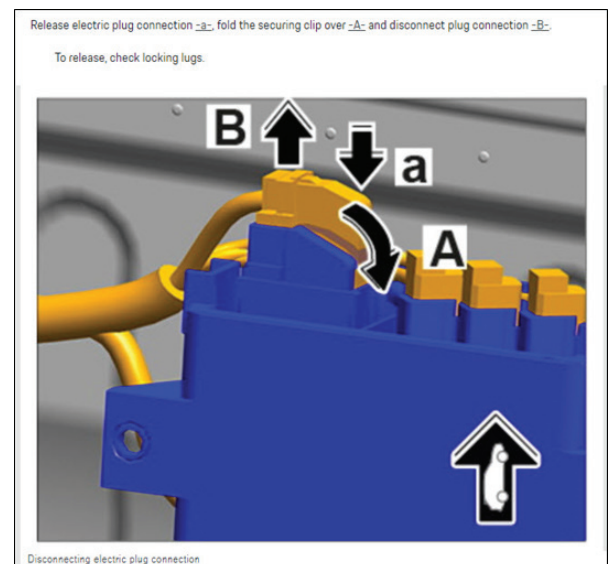
e. => If the "PVTS operating status" is **not** "Contract inactive," the workshop must request a contract suspension from Vodafone before proceeding. Contact the Vodafone NSP Call Center at **888-992-6098**. Tell them you request a "Porsche 2022 Suspension." This is the keyword for their internal process.

=> If the "PVTS operating status" is "Contract inactive," proceed with step 4.

4. **Deactivate VTS** using the PIWIS tester.
 - a. Using the "Additional menu," select "PCC/PVTS - deactivation". Click "Next."
 - b. The deactivation process begins. When successful, the tester will display a check mark. Click next and the tester provides more instructions and information.

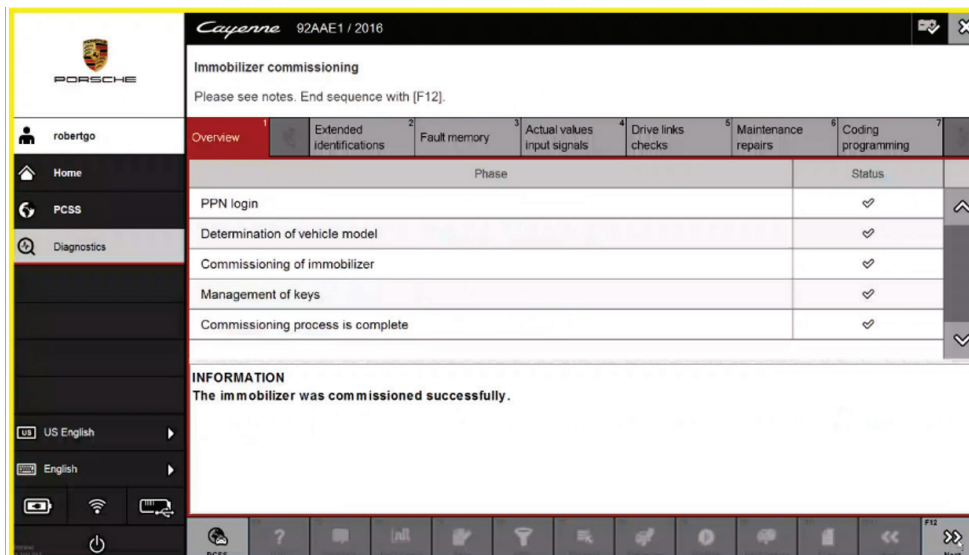
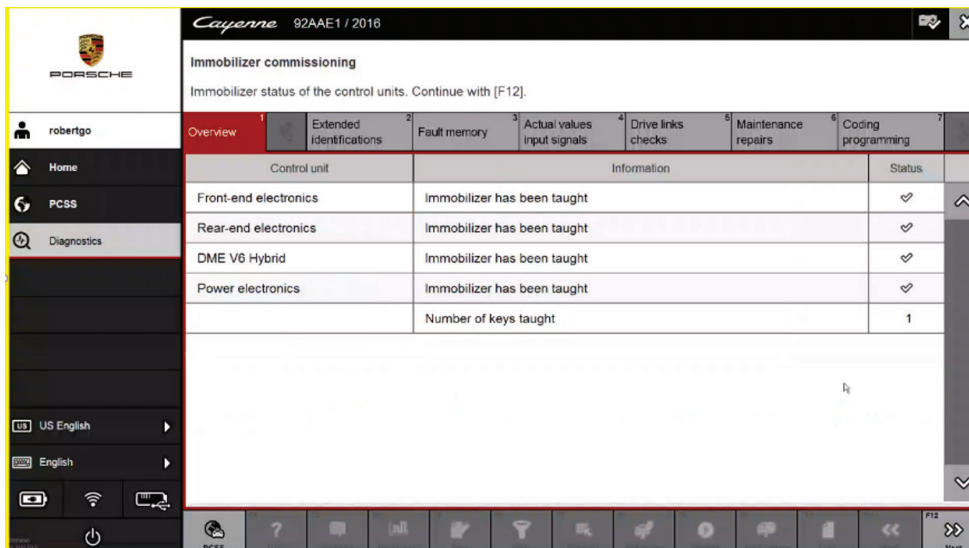


- c. Do not switch off the ignition.
5. **Disconnect the VTS ECU** using applicable workshop manual instructions and then secure the now vacant harness connector for VTS. Be sure this connector does not cause a noise concern.



6. **Reteach the keys.** The tester displays a prompt to reattach vehicle keys. Reteach keys by commissioning the immobilizer

7. **Commission the immobilizer.**
 - a. Using the "Additional menu," select "Immobilizer commissioning". Click "Next."
 - b. Follow the important notes in the tester.
 - c. Follow prompts to logon to PPN and enter all required information.
 - d. Follow the procedure given in the tester.
 - e. When prompted, you must teach at least one key. Click "Yes" to teach the key(s).
 - f. Follow the procedure given in the tester.
 - g. When completed successfully, the tester will display two summaries.



8. The immobilizer is now functioning without input from the VTS. Confirm this by **starting the engine and verifying it runs normally.**
9. **Clear fault memory.**
10. **Remove VTS from MOVD.** Find the applicable I-option and change the vehicle's configuration not to have VTS as an equipped option. (Hint: Often the I-numbers are 7G9 (with VTS) and 7G0 (without VTS), but other option codes may apply depending on the model type and model year.)
11. **Perform automatic coding.**
12. **Clear fault memory.**
13. Always **perform a final VAL.**

Warranty Information

Perform this repair using **Warranty, PGAT, or DSA, as applicable.** If you have any questions concerning claim procedures for this specific issue reference the Warranty PPN space.

Search Items

PVTS, VTS, immobilizer, start inhibit, 3G, 4G

Important Notice: Technical Bulletins issued by Porsche Cars North America, Inc. are intended only for use by professional automotive technicians who have attended Porsche service training courses. They are written to inform those technicians of conditions that may occur on some Porsche vehicles, or to provide information that could assist in the proper servicing of a vehicle. Porsche special tools may be necessary in order to perform certain operations identified in these bulletins. Use of tools and procedures other than those Porsche recommends in these bulletins may be detrimental to the safe operation of your vehicle, and may endanger the people working on it. Properly trained Porsche technicians have the equipment, tools, safety instructions, and know-how to do the job properly and safely. Part numbers listed in these bulletins are for reference only. The work procedures updated electronically in the Porsche PIWIS diagnostic and testing device take precedence and, in the event of a discrepancy, the work procedures in the PIWIS Tester are the ones that must be followed.