



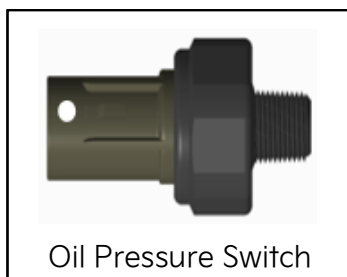
GROUP	MODEL
ENG	Multiple Models Listed
NUMBER	DATE
237	July 2022

TECHNICAL SERVICE BULLETIN

SUBJECT: OIL PRESSURE SWITCH (OPS) REPLACEMENT

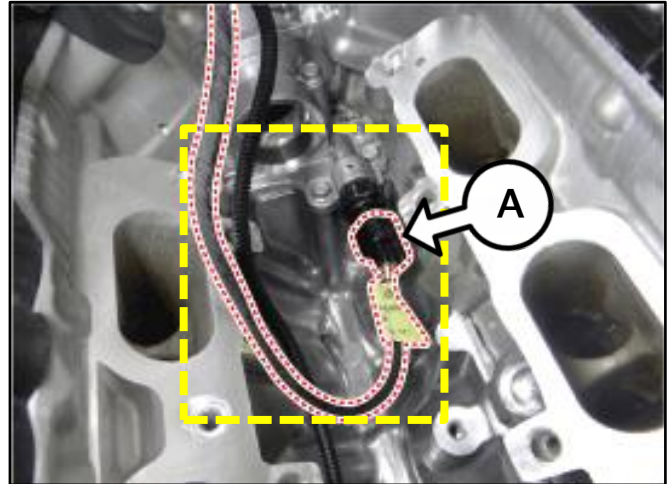
This bulletin provides information regarding the replacement of the Oil Pressure Switch associated with the 'Warranty Extension Program' (WTY026) on some 2014-2018MY vehicles listed in the table below, for repairs that may be necessary to address an Oil Pressure Switch leak in the eligible vehicles listed below from 10 years/100,000 miles to 15 years/150,000 miles, whichever comes first, starting from the date the vehicle was first put into service. This warranty extension is to address the Oil Pressure Switch leaking condition at no cost to the customers during this extended warranty period. Follow the procedure outlined in this publication to replace the OPS.

MY	Model	Engine	Production Date
2014-2015	Sorento (XMa)	LAMBDA 3.3L GDI	December 17, 2012 to December 11, 2014
2016-2018	Sorento (UMa)		October 27, 2014 to March 1, 2018
2014-2016	Cadenza (VG)		February 1, 2013 to January 7, 2016
2015-2018	Sedona (YP)		July 21, 2014 to December 6, 2017



Inspection Procedure:

1. Open the hood and remove the engine cover.
2. Using a videoscope such as SST JSP97305 Snake Scope II or similar tool inspect the Oil Pressure Switch (OPS) (A) for oil leakage.

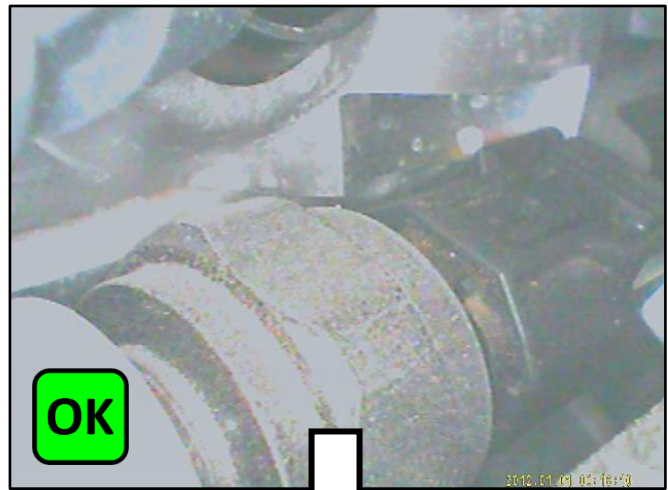


Note: Be sure to check the surrounding bottom and wall area of the engine block for oil leak traces.

- 3a. If oil leak is **not** present (OK), no further action is required.
- 3b. If oil leak is present (NG), proceed to the 'Replacement Procedure' on page 3 to replace the OPS with the new part.


TECH TIP

Dealer Technicians: Sometimes a leaking Oil Pressure Switch (OPS) can be misdiagnosed as a rear main oil seal leak due to the fact we have a drain hole in the engine valley to the rear of the engine. Using your videoscope we can identify where the oil leak is coming from and determine within a few minutes if the OPS is leaking.



SUBJECT:

OIL PRESSURE SWITCH (OPS) REPLACEMENT**Replacement Procedure:**

1. Replace the Oil Pressure Switch (OPS) by referring to "Engine Mechanical System → Lubrication System → Oil Pressure Switch → Repair procedures" in the applicable Shop Manual on KGIS.



Tightening torque for Knock Sensor:
10.8 - 15.9 lb.ft. (14.7 - 21.6 N.m)

CAUTION

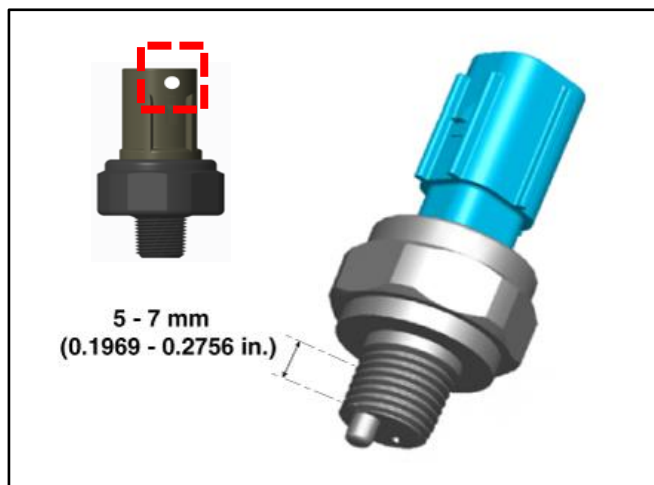
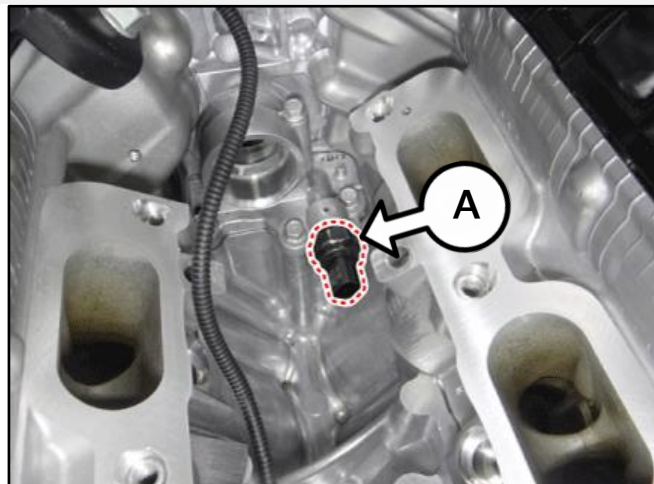
Ensure that no debris enter the cylinder head intake ports.

NOTICE

The new OPS may have a white marking as shown. Remove any debris and clean gasket surface prior to assembly.

IMPORTANT

Add sealant (3M 2510) to the OPS threads in the area shown.



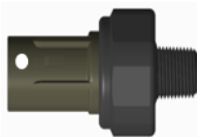

2. Reinstall all removed parts in the reverse order of removal.
3. Clean any residual oil that may have leaked from the OPS.
4. Top-off oil level and confirm normal operation.

SUBJECT:

OIL PRESSURE SWITCH (OPS) REPLACEMENT**AFFECTED VEHICLE RANGE:**

Model	Production Date Range
Sorento (XMa)	December 17, 2012 to December 11, 2014
Sorento (UMa)	October 27, 2014 to March 1, 2018
Cadenza (VG)	February 1, 2013 to January 7, 2016
Sedona (YP)	July 21, 2014 to December 6, 2017

REQUIRED PART:

Part Name	Part Number	Figure	Qty.
Oil Pressure Switch	94750 37100QQK		1
Synthetic Engine Oil	Refer to Warranty Bulletin 2022-07 for engine oil NPN		Charge quantity needed for "Oil Top-Off"

WARRANTY INFORMATION:**N Code: E74 C Code: ZZ1**

Model	Claim Type	Causal P/N	Qty.	Repair Description	Labor Op Code	Op Time	Replacement P/N	Qty.
XMa, Uma	W	94750 37100	0	Oil Pressure Switch Leak Inspection	222A03I0	0.3 M/H	N/A	0
VG, YP					222053I0			
VG	W	94750 37100	0	Oil Pressure Switch (OPS) Replacement	222053R0	1.8 M/H	94750 37100QQK	1
YP					222053R1	1.8 M/H		
UMa					222A03R0	1.6 M/H		
XMa					222A03R1	1.7 M/H		

Note: Manually enter part number NPNOTHER, with a maximum allowed amount of \$1.00 for reimbursement of thread locker used in the course of repair.