

QUARANTINE NOTICE

Reference number:	QN-01-1664	Issued: 11 July, 2022
Subject:	Lightweight Seat Latch	
Model(s):	V12 Vantage, Vantage F1, Vantage F1 Roadster	
VIN Range:	Refer to the separately published list of affected Vehicle Identification Numbers (VINs)	
Applicable to:	UK, Europe, North America, APAC	
Distribute to:	After Sales Manager Executive Manager Service Manager Sales Manager	Warranty Staff Technician(s) Parts Staff

Reason for this Quarantine Notice

Aston Martin has found that some vehicles with lightweight seats installed do not show a warning message in the instrument cluster when the seat backrests are unlocked.

Do the workshop procedure that follows to make sure that the applicable warning message is shown in the instrument cluster and, if necessary, repair the seat latch switch.

Part A – Make Sure the Warning Message Shows in the Instrument Cluster

Part B - Repair the Seat Latch Switch

Workshop Procedure

Part A – Make Sure the Warning Message Shows in the Instrument Cluster

1. Switch the ignition on to ignition stage 2 (engine on) and lower both windows.
2. Exit the vehicle and make sure both front doors are closed with the windows still lowered.
3. With the doors still closed, unlatch each front seat (refer to Figure 1). Do a check to make sure that the “front seat backrest not locked” message shows in the instrument cluster for each seat.



Figure 1

4. If the warning message shows for each seat this procedure is complete.
5. If the warning message does not show for a seat, do Part B - Repair the Seat Latch Switch for that seat.

Part B - Repair the Seat Latch Switch

Note: Videos of this repair process are available in Technical Hub - Refer to "Campaign Support Files".

Note: Use a clean/damage free forked trim removal tool and make sure the carbon is protected from scratches.

1. Use a forked trim removal tool to release the ball and socket fixings for the centre pad in the order shown (refer to Figure 2).
The fork should be pushed between the ball and socket to release.

CAUTION: CARE MUST BE TAKEN WHEN YOU PULL AWAY FROM THE POST BASE AND RUBBER SOCKET. IF TOO MUCH FORCE IS APPLIED THE FIXINGS CAN BE DAMAGED.

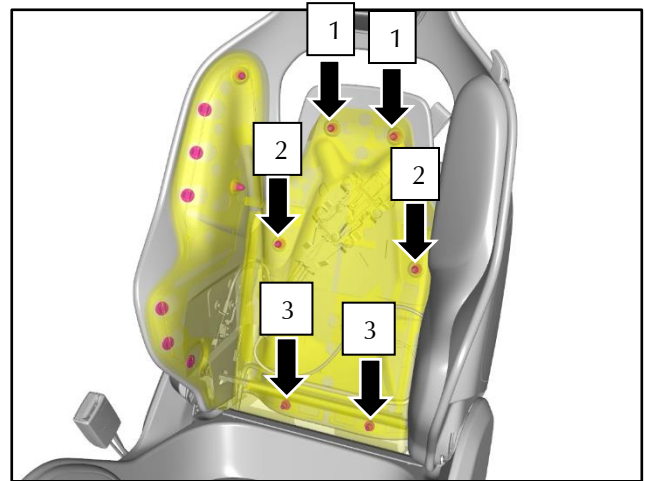


Figure 2

2. Use a forked trim removal tool to release the ball and socket fixings for the side pad in the order shown (refer to Figure 2).

CAUTION: CARE MUST BE TAKEN WHEN YOU PULL AWAY FROM THE POST BASE AND RUBBER SOCKET. IF TOO MUCH FORCE IS APPLIED THE FIXINGS CAN BE DAMAGED.

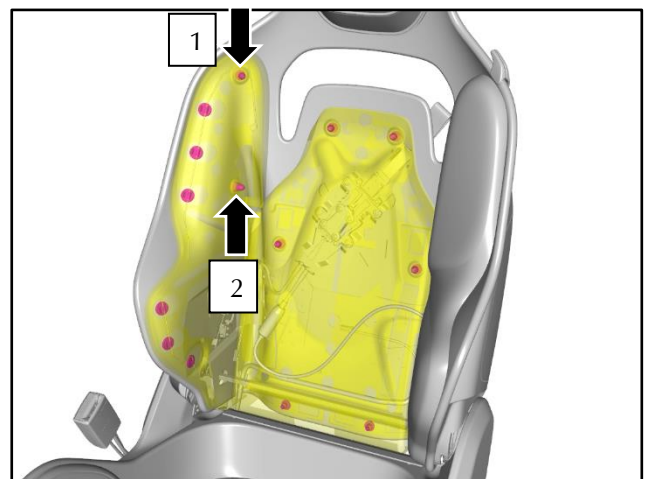


Figure 3

3. Release the seat pad from the clips in the order shown (refer to (Figure 4)).

Note: *When you install the seat pad, start in the opposite order.*

CAUTION: CARE MUST BE TAKEN WHEN YOU RELEASE THE CLIPS. IF TOO MUCH FORCE IS APPLIED THE CLIPS CAN BE DAMAGED.

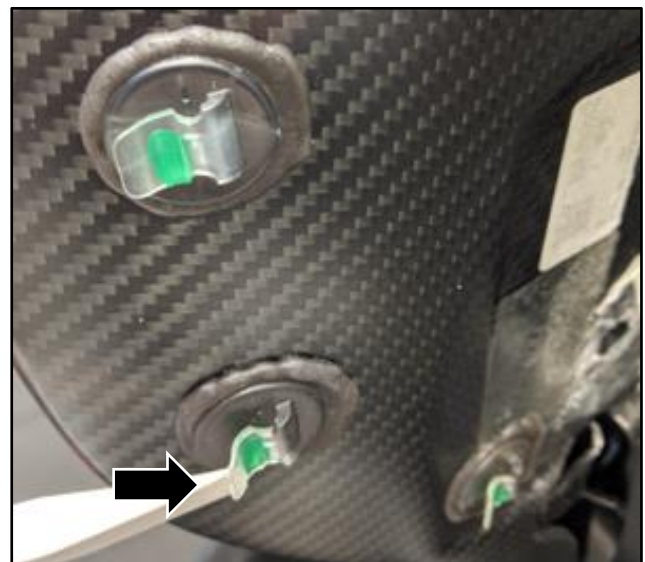
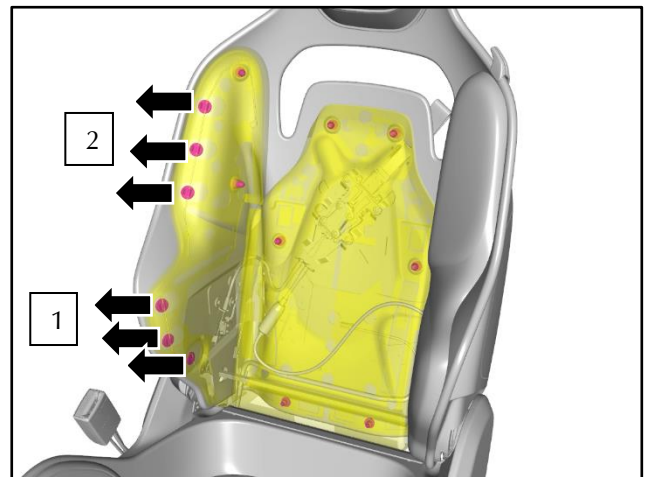


Figure 4

4. If a rubber bush socket is removed it must be installed to the seat pad again (refer to Figure 5).
 1. Apply Loctite 406 (or other suitable adhesive for use with rubber) around the top of the bush socket.
 2. Let the adhesive dry for a minimum of 15 minutes before you install the rubber bush socket.
 3. Install the rubber bush socket.

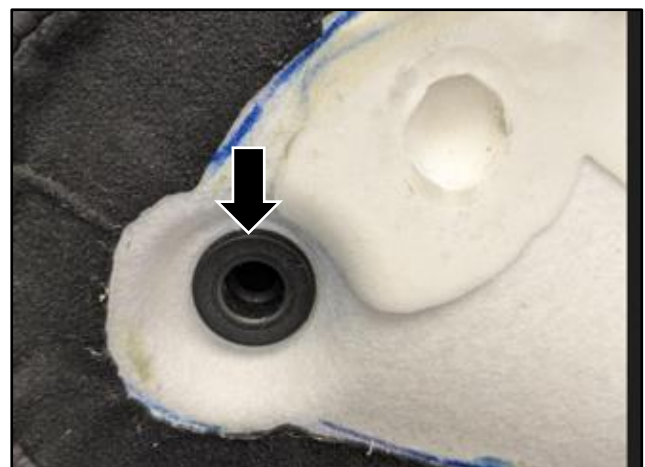


Figure 5

5. Install a 12-15mm piece of adhesive lined heat-shrink around the microswitch lever for the seat latch (refer to Figure 6).

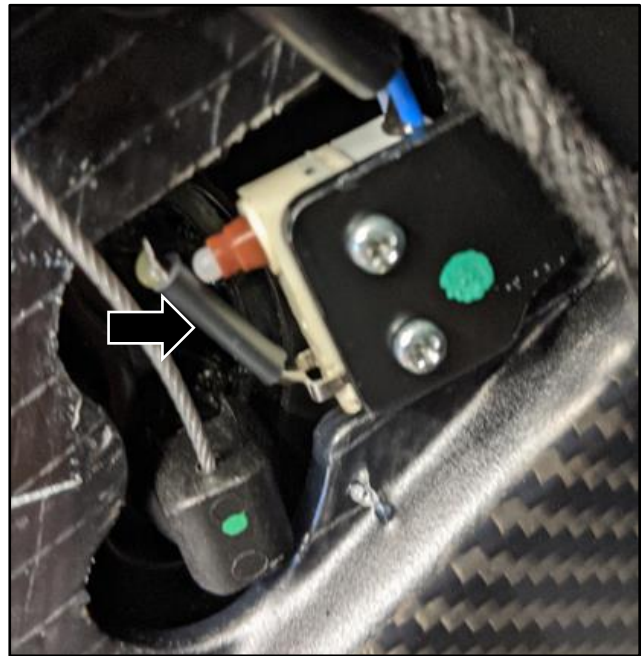


Figure 6

6. Use a heat gun with a fine nozzle to shrink the adhesive lined heat-shrink.
CAUTION: MAKE SURE YOU DO NOT HEAT STRESS THE SURROUNDING COMPONENTS. PARTICULAR CARE MUST BE TAKEN NEAR THE MICROSWITCH PLUNGER. USE A SMALL PIECE OF ALUMINIUM FOIL TO DEFLECT HEAT AND PROTECT COMPONENTS FROM THE HEAT GUN.
7. Let the heat-shrink cool for 3 to 5 minutes.
8. Test the operation of the seat latch switch as in Part A to make sure the warning message shows in the instrument cluster.
9. Do steps 1 through 3 in the opposite order to install the seat pad.

Part Data

Description	Part Number
Heat-Shrink	Local Supply
Adhesive (for example Loctite 406)	Local Supply

Warranty Data

Procedure and Labour Time

Tier A

Description	Labour Time
Warning Message Check	0.05

Tier B

Description	Labour Time
Warning Message Check and Repair One Seat	0.55

Tier C

Description	Labour Time
Warning Message Check and Repair Two Seats	1.05

If you have any questions related to this document, please refer to the 'Contact Us' link on this webpage, or contact your local Dealer or After Sales Manager.

The English version of this document is written in Simplified Technical English to ASD-STE100™.