

MAS003104 (MSC 22-23)

Campaign 505

FROM: Maserati TSO

TO: Maserati Network



MASTERS OF CARE

Service Campaign 505 M15x-M161 - Customer Protection Action



DATE: JUNE 30 2022

Certain Maserati Ghibli, Levante, and Quattroporte MY21-MY22 vehicles listed in MODISCS+ are involved in a Service Campaign concerning six targeted checks to be performed to prevent some issues and protect the final Customer from any negative perception of our product.

The Customer is important for us, even more so now. Our product range is enriched with each MY of new cutting-edge content and new models are on the horizon. If Maserati's past is glorious, the near future is fascinating. This Service action goes in the direction of offering our total devotion to the Customer. Six potentially critical areas of the vehicle have been identified and we want to make sure that no Customer can perceive any defect. We ask you to perform the checks indicated in the technical bulletin and, in case of non-compliance, to rework the vehicle according to the operating cycles.

Overview

Inspection List:

- A) M161 – Wind noise**
- B) M15X – Wind noise (Illustration video attached)**
- C) M161 – Air vent detachment**
- D) M161 – Brake pedal switch failure inspection**
- E) M161 – Rattling noise from silencer**
- F) M157-M161 – Oil leak from differential**

Operational Procedure



All images shown in this bulletin are for illustrative purposes only

Preparations:

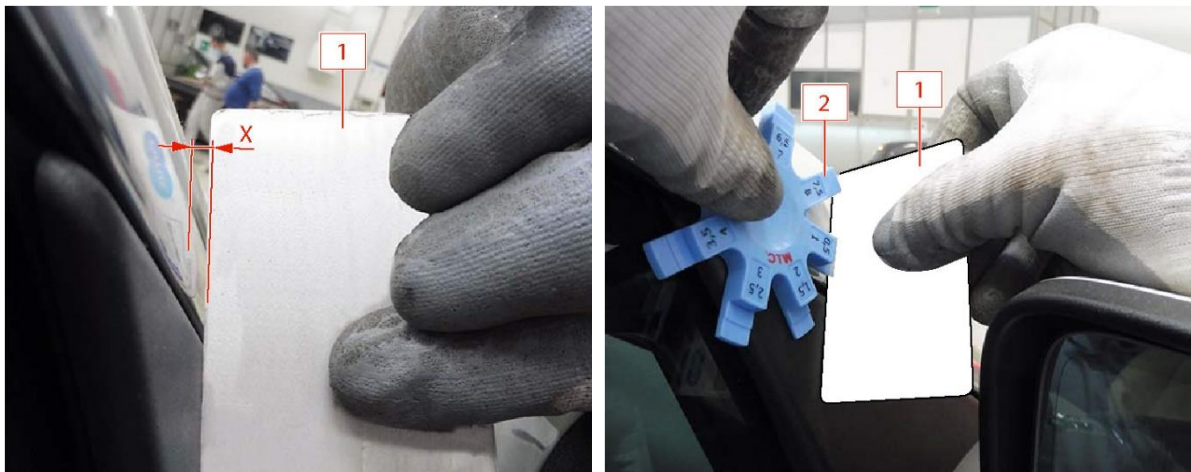
- Always check in ModisCS+ to see if the vehicle is involved in this campaign and if the campaign has not been previously performed.
- Before performing operations, please follow the indicated procedure for interior protection:
00.AA.005 - INTERIOR VEHICLE PROTECTION

Use the Attached VIN list to verify the correct actions to be performed for each VIN

Complete VIN	VIN	Status	M161 Wind Noise	M15X Wind Noise	M161 Air Vent Detachment	M161 Brake Pedal Switch Failure	M161 Rattling Noise From Silencer	M157-M161 Oil Leak from Differential
ZN6XU61E2NX381069	381069	94	N	N	Y	N	N	Y
ZN661YUS6MX376943	376943	95	Y	N	Y	N	N	Y
ZAMYT57B001380320	380320	95	N	Y	N	N	N	N
ZN6AU61E3NX385928	385928	94	N	N	Y	Y	N	Y
ZN661YUM6NX400421	400421	90	Y	N	Y	N	Y	N

A) M161 – Wind noise

1. Verify the correct alignment of the RH front door as indicated below.
2. Position a suitable tool (1) and with a feeler gauge (2) measure the distance as illustrated:



3. If the distance is:
 - < 1,5mm adjust the door 0,5 mm inwards.
 - > 1,5mm adjust the door 1 mm inwards.
4. If the gap is close to 0mm, less than 1 mm, it can be considered as ok.
5. Repeat the inspection for the LH side and perform the **rework only** if needed.

Rework

6. Open the LH/RH front door.
7. Undo the indicated screw and perform the adjustment:
 - If the measure is $< 1,5\text{mm}$ move the door (1) $0,5\text{ mm}$ towards the interior of the car.
 - If the measure is $> 1,5\text{mm}$ adjust the door (1) 1 mm towards the interior of the car.



8. Tighten the indicated screw to a torque of 45Nm .



9. Repeat the inspection and verify if the measurement is $\leq 1,5\text{ mm}$.

B) M15X – Wind noise (Illustration video attached)

1. Open the RH front door and position a sheet of paper between the B-Pillar and the back side of the window (1), then close the RH front door as figured.



2. Move the sheet of paper up and down as illustrated below.



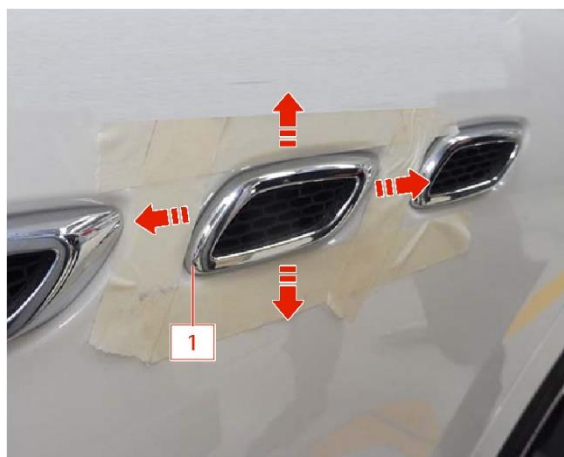
3. If the movement of the sheet is easy, with little to no drag. Perform the window adjustment.

Rework

4. Adjust widow on passenger front side:
09.34.005 - PASSENGER'S SIDE FRONT MOVABLE WINDOW-Adjustments
5. Repeat the Inspection for the LH side.

C) M161 – Air vent detachment

1. Verify the integrity and the correct position of ALL 3 air vents (Both driver and passenger side) as illustrated below.



2. If the check is **NOT OK**, (Example: the vent is loose and can be easily detached) = perform the rework.

Rework

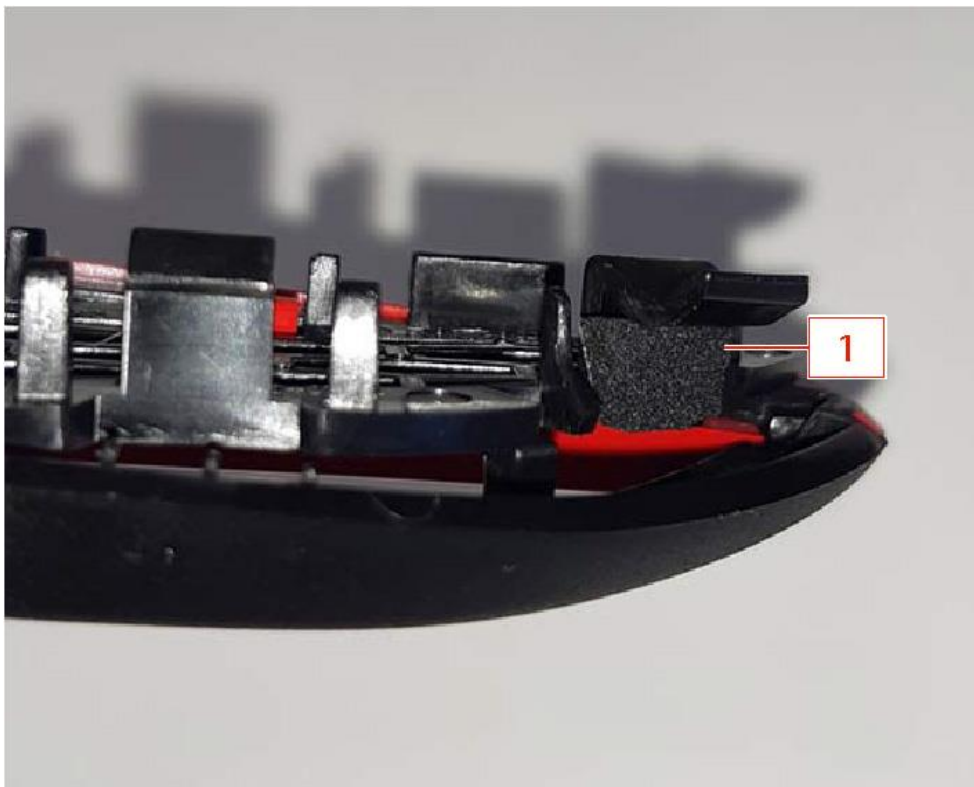
3. Remove the air vent (1).



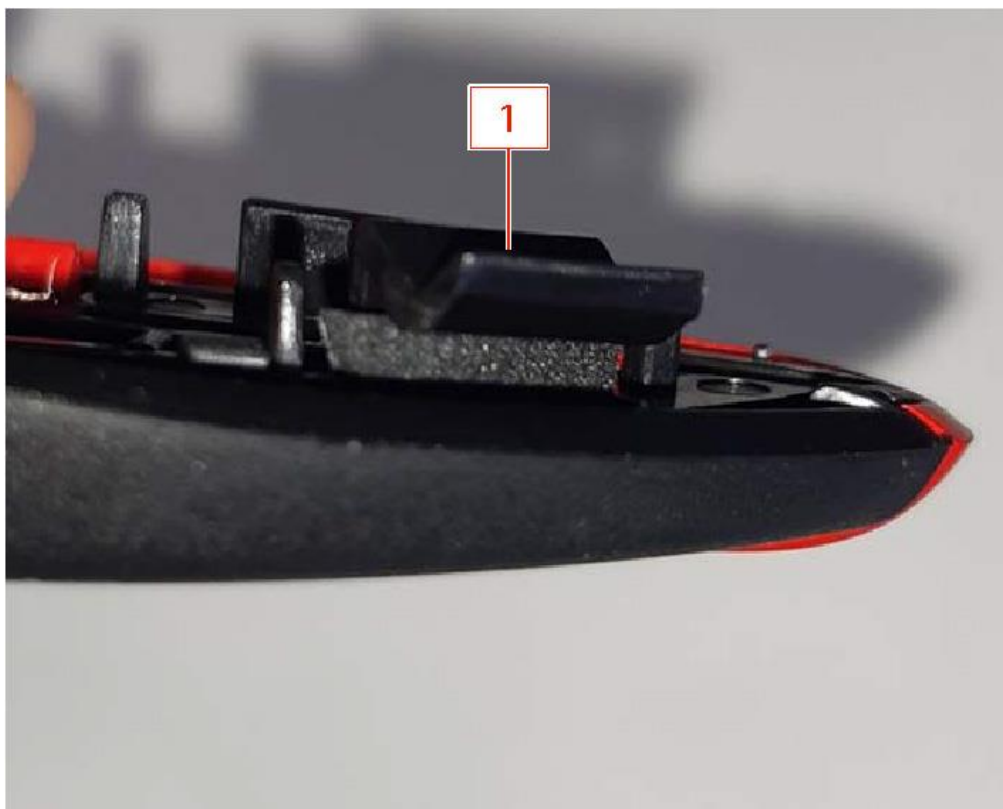
4. To perform this work a generic adhesive felt [1x1 cm] must be used as shown in the following pictures.
5. Slightly lift the rear grille (1) to insert the felt.



6. Position the felt (1) [1x1 cm].



7. Reposition the grid (1).



D) M161 – Brake Pedal Switch Failure Inspection

Preconditions

The vehicle must meet these conditions first before starting the procedure:

- Battery voltage > 12.5 V
- Key ON Engine ON
- Vehicle Parked

Procedures

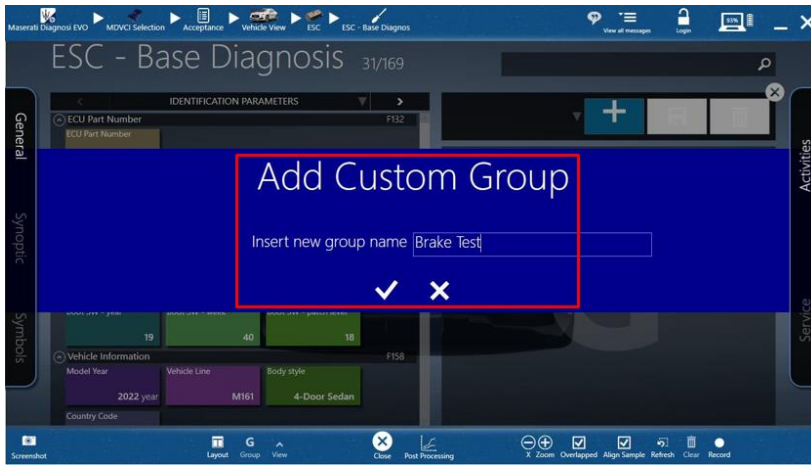
1. Connect the MD EVO to the vehicle using the VCI2.
2. ECU Selection:
 - From Vehicle View, select the **ESC module** in the red box



3. From ECU View select **Base Diagnosis** in the red box.

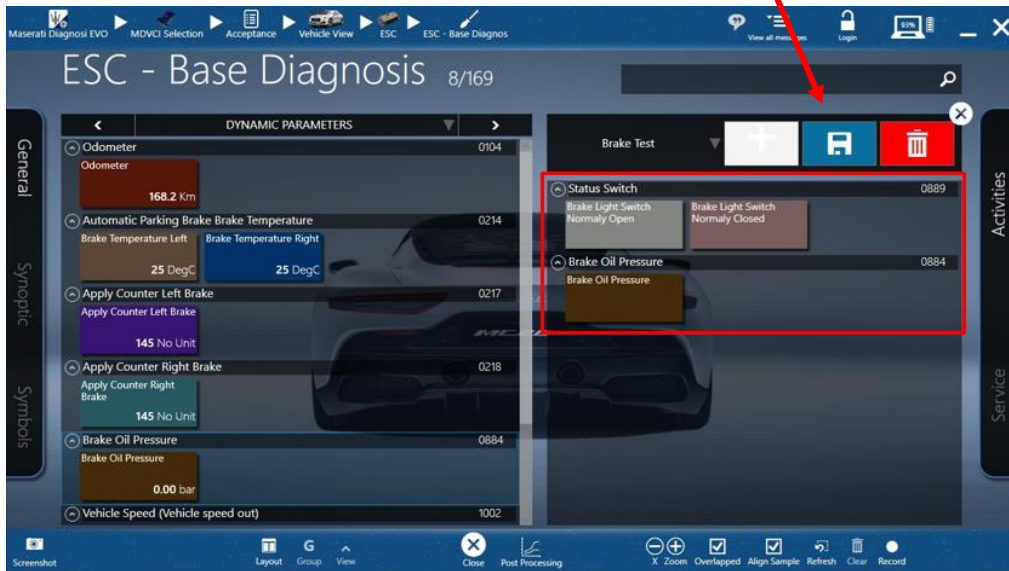


4. From **Base Diagnosis** add Custom Group e.g. Brake Test as depicted in the red box.



5. From **Base Diagnosis** select the following monitoring parameters and **Save**:

- Brake Light Switch Normally Open 0889.
- Brake Light Switch Normally Closed 0889.
- Brake Oil Pressure 0884.



6. From the Brake Test Group, monitor the parameter values with the Brake Pedal Pressed:

- Brake Light Switch Normally Open 0889. (Pressed)
- Brake Light Switch Normally Closed 0889. (Not Pressed)
- Brake Oil Pressure 0884.



7. From the Brake Test Group, monitor the parameter values with the Brake Pedal Released:
 - Brake Light Switch Normally Open 0889: Not Pressed.
 - Brake Light Switch Normally Closed 0889: Pressed.
 - -7 bar < Brake Oil Pressure 0884 < 7 bar.

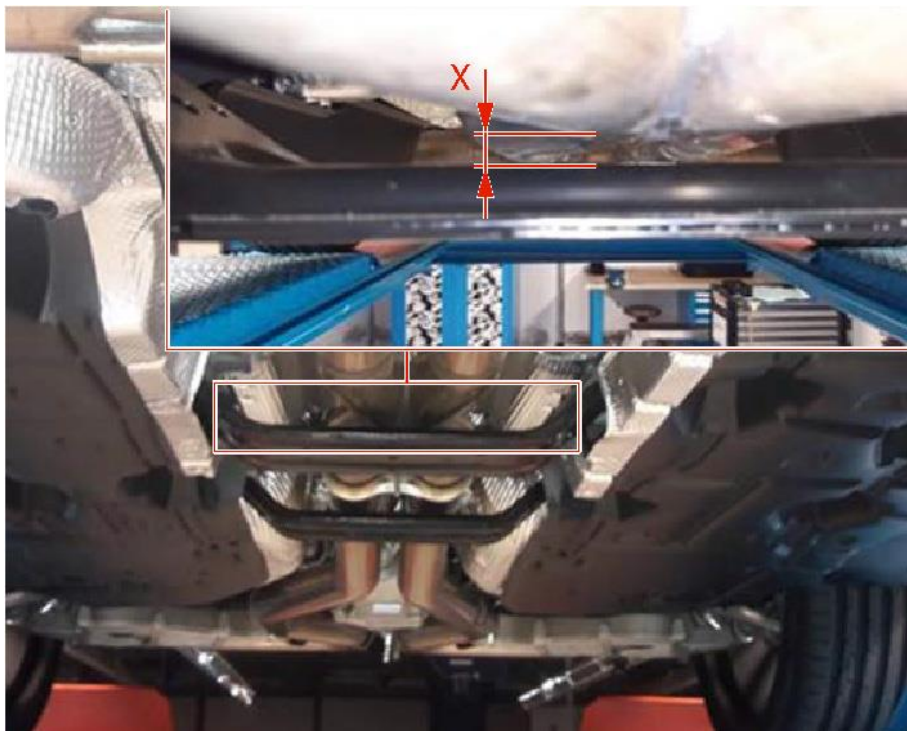


Rework

8. Refit the same brake pedal switch:
 - 05.20.011 - BRAKE PEDAL SWITCH - Removal/refitting or replacement**
9. Repeat the check procedure to be sure the pedal is mounted correctly.

E) M161 – Rattling noise from silencer

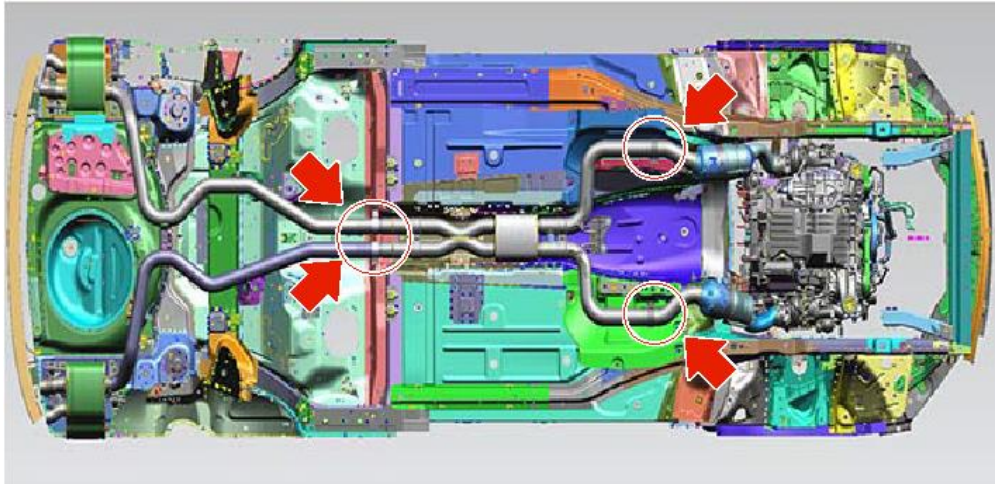
1. Raise the vehicle on a lift.
2. Using a thickness gauge / calibrated block, measure the distance between the central pipe and the front tunnel reinforcement bracket (X = MIN 14 mm).



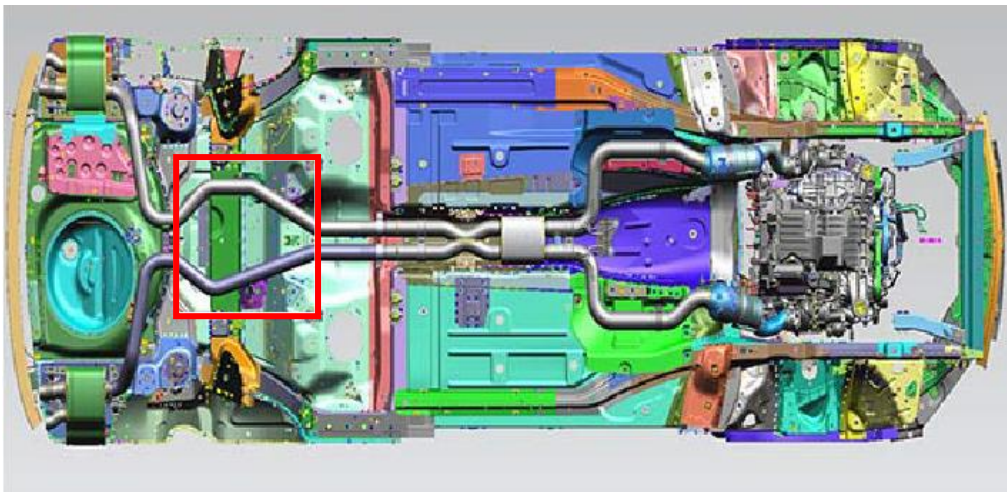
3. If the measurement is less than 14 mm, perform the rework.

Rework

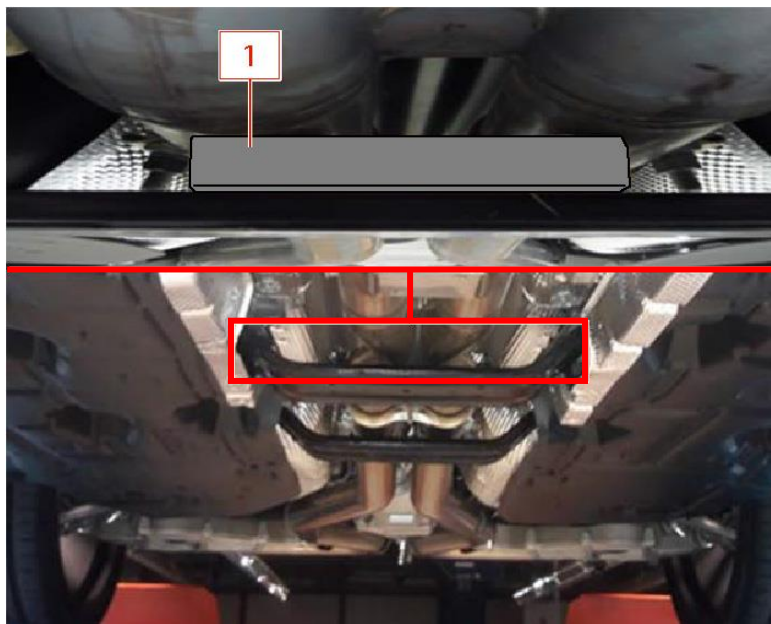
4. Release of the 4 clamps indicated in the figure.



5. Perform the manual movement (indicated area) of the exhaust pipe upwards and then downwards to release the clamps.

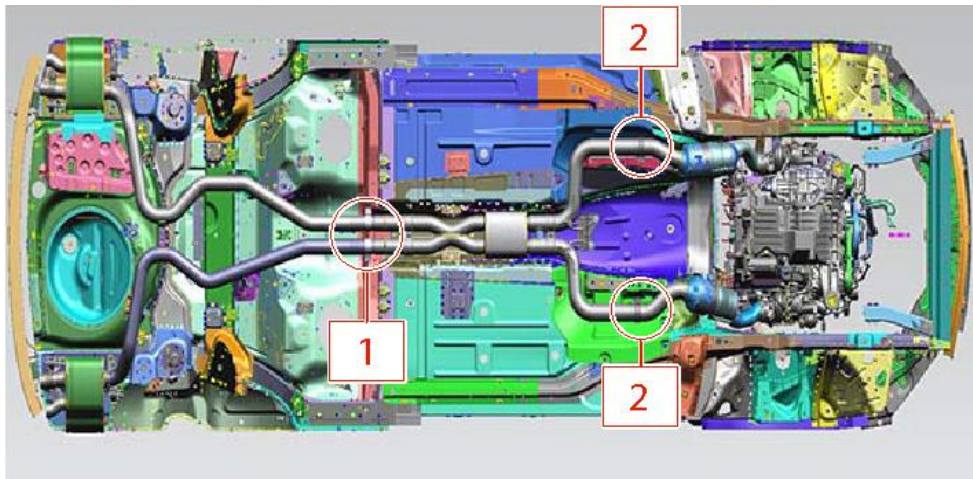


6. Insert the 20-25 mm thick (1) on the front tunnel reinforcement bracket as illustrated.



Note: The spacer must have a thickness between 18 and 25 mm. Any element of this size can be used for this procedure. No special equipment /tools are required.

- Tighten the clamps (1) to the torques of 45Nm and the clamps (2) to a torque of 55Nm.



- Remove the thick from the front tunnel reinforcement bracket.

F) M157-M161 – Oil leak from the rear differential

- Raise the vehicle on a lift and check for the presents of oil leaks from the rear differential.





Rework

- If an oil leak has been found, open a BOL as "SUPPORT REQUEST" and attach pictures (including the parts label on the casing), vehicle scan, and await further instructions.

Warranty Claim

Complete the warranty claim as follows:

Description	Code
Campaign Number	505
Warranty Code	23
Fault Code	063
Component Code	3.21.001
Operation Code  <ul style="list-style-type: none"> M161 – Wind noise <ul style="list-style-type: none"> ▪ Check 9.30.083.A (0,05h) ▪ Check + Rework 1 side 9.30.083.B (0,25h) ▪ Check + Rework 2 sides 9.30.083.C (0,45h) M15X – Wind noise <ul style="list-style-type: none"> ▪ Check 9.34.005.A (0,05h) ▪ Check + Rework 1 side 9.34.005.B (1,45h) ▪ Check + Rework 2 sides 9.34.005.C (2,85h) M161 – Air vent detachment <ul style="list-style-type: none"> ▪ Check 9.15.047.A (0,05h) ▪ Check + Rework 9.15.047.B (0,25h) M161 – Brake pedal switch failure <ul style="list-style-type: none"> ▪ Check 5.20.011.A (0,30h) ▪ Check + Rework 5.20.011.B (1,00h) M161 – Rattling noise from silencer <ul style="list-style-type: none"> ▪ Check 1.81.003.A (0,10h) ▪ Check + Rework 1.81.003.B (0,50h) M157-M161 – Oil leak from differential <ul style="list-style-type: none"> ▪ Check 3.21.001.A (0,05h) ▪ Check + Rework 3.21.001.B (2,05h) 	

 Only operations listed in the Vin List (marked with Y in the respective cells) may be claimed. Performing operations not expressly requested will be discarded and not refunded.