



Subject: ACTIVE DRIVING DISPLAY VIBRATION / RATTLE NOISE WHILE DRIVING AND/OR UPPER LENS DEFORMED	Service Alert No.: SA-042/22
	Last Issued : 06/22/2022

BULLETIN NOTES

This SA supersedes the previously issued SA(s) listed below. The changes are noted in Red.

Previous SAs:	Date(s) Issued:
SA-045/20	04/08/20

APPLICABLE MODEL(S)/VINS

2019 Mazda3

DESCRIPTION

Some customers may complain about a vibration / rattle noise coming from the dash above the instrument cluster. This may be caused by an active driving display unit and or warped / deformed active driving display lens.

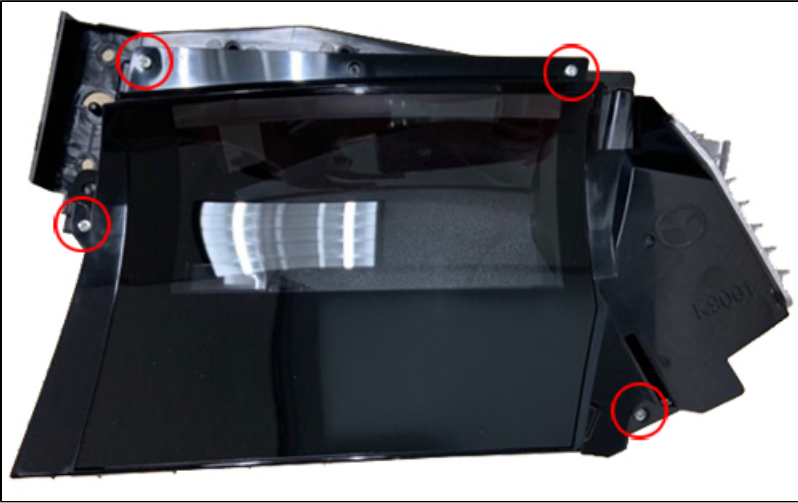
Customers having this concern should have their vehicle repaired using the following repair procedure.

REPAIR PROCEDURE

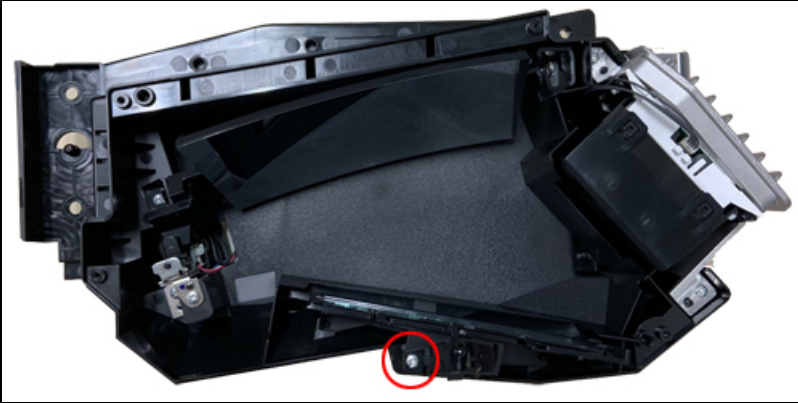
1. Verify customer concern.
2. Inspect the active driving display upper lens. Is the lens warped / deformed?
 - Yes - Go to TSB 09-010/20, then proceed to step 3.
 - No - Go to step 3.
3. Remove the active driving display unit (ACTIVE DRIVING DISPLAY REMOVAL/INSTALLATION [(US)]).

CONSUMER NOTICE: The information and instructions in this bulletin are intended for use by skilled technicians. Mazda technicians utilize the proper tools/ equipment and take training to correctly and safely maintain Mazda vehicles. These instructions should not be performed by "do-it-yourselfers." Customers should not assume this bulletin applies to their vehicle or that their vehicle will develop the described concern. To determine if the information applies, customers should contact their nearest authorized Mazda dealership. Mazda North American Operations reserves the right to alter the specifications and contents of this bulletin without obligation or advance notice. All rights reserved. No part of this bulletin may be reproduced in any form or by any means, electronic or mechanical---including photocopying and recording and the use of any kind of information storage and retrieval system ---without permission in writing.

4. Remove the upper lens by removing the (4) screws as shown.

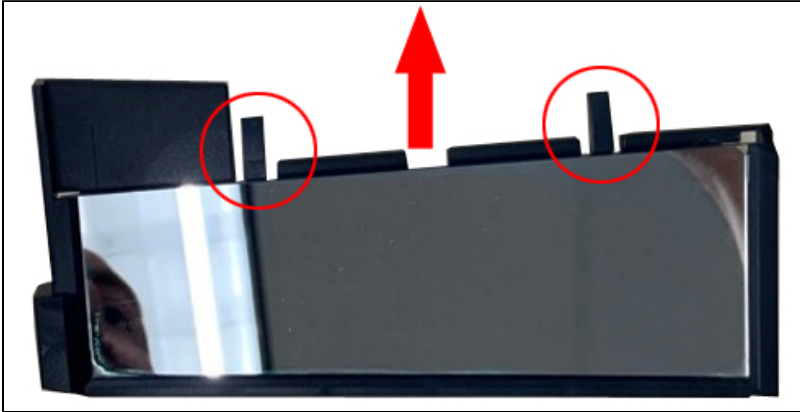


5. Remove the reflective glass bracket by removing one screw as shown.



CONSUMER NOTICE: The information and instructions in this bulletin are intended for use by skilled technicians. Mazda technicians utilize the proper tools/ equipment and take training to correctly and safely maintain Mazda vehicles. These instructions should not be performed by "do-it-yourselfers." Customers should not assume this bulletin applies to their vehicle or that their vehicle will develop the described concern. To determine if the information applies, customers should contact their nearest authorized Mazda dealership. Mazda North American Operations reserves the right to alter the specifications and contents of this bulletin without obligation or advance notice. All rights reserved. No part of this bulletin may be reproduced in any form or by any means, electronic or mechanical---including photocopying and recording and the use of any kind of information storage and retrieval system ---without permission in writing.

6. Press the two tabs away from the glass and then slide the glass up.



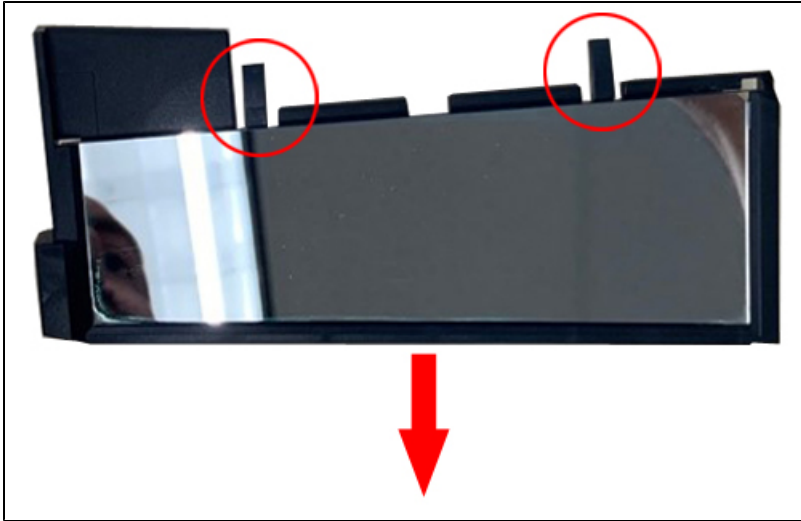
7. Using Mazda gray silicone, apply 5 dabs on the reflective glass holder.

NOTE: Apply enough silicone so that when the glass is reinstalled, silicone will "squeeze out".



CONSUMER NOTICE: The information and instructions in this bulletin are intended for use by skilled technicians. Mazda technicians utilize the proper tools/ equipment and take training to correctly and safely maintain Mazda vehicles. These instructions should not be performed by "do-it-yourselfers." Customers should not assume this bulletin applies to their vehicle or that their vehicle will develop the described concern. To determine if the information applies, customers should contact their nearest authorized Mazda dealership. Mazda North American Operations reserves the right to alter the specifications and contents of this bulletin without obligation or advance notice. All rights reserved. No part of this bulletin may be reproduced in any form or by any means, electronic or mechanical---including photocopying and recording and the use of any kind of information storage and retrieval system ---without permission in writing.

8. Slide the glass back down into the holder, making sure the two tabs lock the glass. Clean the glass using isopropyl alcohol and a clean micro fiber towel.



9. Install the active driving display upper lens.

10. Install the active driving display unit in the reversal order of removal (ACTIVE DRIVING DISPLAY REMOVAL/ INSTALLATION [(US)]).

11. Verify repair.

PARTS INFORMATION

Parts Number	Description	Qty.	Notes
BDGF-55-459A	Lens, Multi-meter	1	Active Driving Display Upper Lens Only replace if the lens is warped / deformed

CONSUMER NOTICE: The information and instructions in this bulletin are intended for use by skilled technicians. Mazda technicians utilize the proper tools/ equipment and take training to correctly and safely maintain Mazda vehicles. These instructions should not be performed by "do-it-yourselfers." Customers should not assume this bulletin applies to their vehicle or that their vehicle will develop the described concern. To determine if the information applies, customers should contact their nearest authorized Mazda dealership. Mazda North American Operations reserves the right to alter the specifications and contents of this bulletin without obligation or advance notice. All rights reserved. No part of this bulletin may be reproduced in any form or by any means, electronic or mechanical---including photocopying and recording and the use of any kind of information storage and retrieval system ---without permission in writing.

WARRANTY INFORMATION**NOTE:**

- This warranty information applies only to verified customer complaints on vehicles eligible for warranty repair.
- This repair will be covered under Mazda's New Vehicle Limited Warranty term.
- Additional diagnostic time cannot be claimed for this repair.

	Active Driving Display lens IS warped / deformed	Active Driving Display lens IS NOT warped / deformed
Warranty Type	A	A
Symptom Code	87	82
Damage Code	9B	9E
Part Number Main Cause	BDGF-55-459	BDGF-55-HU0B
Quantity	1	0
Operation Number / Labor Hours:	T0626BRX / 2.4 hrs. (R&R of unit) T0626XRT / 0.1 hrs. (application of silicone)	T0626ARX / 2.4 hrs. (R&R of unit) T0626XRT / 0.1 hrs. (application of silicone)

CONSUMER NOTICE: The information and instructions in this bulletin are intended for use by skilled technicians. Mazda technicians utilize the proper tools/ equipment and take training to correctly and safely maintain Mazda vehicles. These instructions should not be performed by "do-it-yourselfers." Customers should not assume this bulletin applies to their vehicle or that their vehicle will develop the described concern. To determine if the information applies, customers should contact their nearest authorized Mazda dealership. Mazda North American Operations reserves the right to alter the specifications and contents of this bulletin without obligation or advance notice. All rights reserved. No part of this bulletin may be reproduced in any form or by any means, electronic or mechanical---including photocopying and recording and the use of any kind of information storage and retrieval system ---without permission in writing.