



FIELD SERVICE CAMPAIGN – 2211101 June 2022

SUBJECT:

International® CV™ Engine Replacement

MODELS INVOLVED:

International® CV™ Series trucks

DEFECT DESCRIPTION:

Certain International® CV™ Series trucks may require engine replacement due to engine block concerns.

ELIGIBILITY:

This procedure applies ONLY to vehicles marked in the International® Service PortalSM with FSC 22111. Also complete any other open campaigns listed on the Service Portal at this time.

TOOLS REQUIRED:**NOTE: Order engines through Critical Parts procurement.**

Description	Tool Number	Link to Package
Converter Holding Strap	J-21366	J-21366
Engine Lift Bracket (2)	J-36857	J-36857
Transmission Jack Adapter	J-42055	J-42055
Cap Adapter	09-040-02	09-040-02
Coolant Management Tool	KL5007NAV	KL5007NAV
KL5007NAV	125401NAV	125401NAV
R-134A Air Conditioning Refrigerant Recovery / Recharge Cart, Robinair	34988	34988
Fan Clutch Wrench	J-41240-5A	J-41240-5A
Pulley Installer	ZTSE4717	ZTSE4717
Pulley Remover	ZTSE4716	ZTSE4716
Engine Preluber	J-45299	J-45299

Table 1 Tools Information

PARTS REQUIRED:

NOTE: A new engine label has been sent to the dealership that is replacing the engine.

Part Number	Description	Quantity
7506883C91	6.6 Engine with Compressor	1 (1HTKSSWM4NH199736 vehicle requires engine with compressor)
4083974C1	Air Compressor Oil Feed Fitting	1 (1HTKSSWM4NH199736 vehicle requires engine with compressor)
4118264C1	Air Compressor Oil Return Fitting	1 (1HTKSSWM4NH199736 vehicle requires engine with compressor)
7506882C91	6.6 Engine without Compressor	1 (25 vehicles require engine without compressor)
4088763C1	Torque Converter Bolts (L5D)	6
30866R2	Trans to Eng Bolts	16
7500770C1	Engine Mount Bracket Bolt (Mount to Bracket)	6
7500764C1	Engine Mount Bracket Bolt (Mount to Engine)	6
30752R2	M16 RH Engine Mount Bracket to Frame Bolt (Long)	5
30753R2	M16 RH Engine Mount Bracket to Frame Bolt (Short)	5
7502848C1	M16 Engine Mount Bracket to Frame Nut	5
2506950C1	Lower Radiator Clamp at Water Pump	3
7502825C1	Alternator Nut	1
7502894C1	Starter Motor S Terminal Nut	1

Part Number	Description	Quantity
7502893C1	Starter Motor B+ Cable Nut	1
4118642C3	Exhaust Downpipe to DPF Clamp (Lower)	1
7502979C1	Turbo to CCDOC Gasket (DMAX Supplied)	1
7503541C1	Turbo to CCDOC Clamp (DMAX Supplied)	1
4283183C1	Donut Gasket	1
3626607C1	Wide Tie Strap	12
306132C1	Narrow Tie Strap	10
289862C1	Small Tie Strap	1
4112286C91	Block Heater Cable	1
4115589C1	Seal, Slimline 3/4"	2
4115594C1	Seal, Slimline 1/2"	2

Table 2 Parts Information

WORK INSTRUCTIONS

GOVERNMENT REGULATION: Engine fluid (oil, fuel, and coolant) may be a hazard to human health and the environment. Handle all fluid and other contaminated materials (such as filters and rags) in accordance with applicable regulations. Recycle or dispose of engine fluids, filters, and other contaminated materials according to applicable regulations.

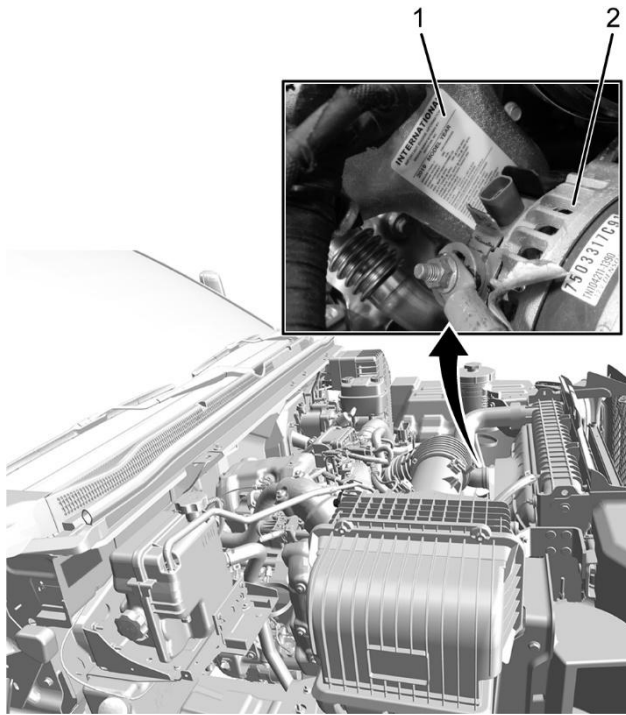
WARNING! To prevent personal injury and / or death, or damage to property, park vehicle on hard flat surface, turn the engine off, set the parking brake, and install wheel chocks to prevent the vehicle from moving in both directions.

WARNING! To prevent personal injury and / or death, always wear safe eye protection when performing vehicle maintenance.

WARNING! To prevent personal injury and / or death, or damage to property, keep flames or sparks away from vehicle and do not smoke while servicing the vehicle's batteries. Batteries expel explosive gases.

WARNING! To prevent personal injury and / or death, or damage to property, remove the ground cable from the negative terminal of the battery before disconnecting any electrical components. Always connect the ground cable last.

1. Park vehicle on a level surface.
2. Shift transmission into Park or Neutral and set parking brake.
3. Turn ignition to Key OFF position.
4. Install wheel chocks.
5. Disconnect and isolate negative battery cable on main vehicle battery. Discard battery terminal nut.
6. Unlatch and open hood.
7. Refer to appropriate International® CV™ service manual for engine removal instructions. Locate information under: *Engine Removal From Chassis*.



0000474490

Figure 1. Engine Emission Label Location

1. Label – engine
2. Alternator

NOTE: Install new engine emissions label on new engine that was sent to your dealership.

8. Install emission label on engine intake manifold (Figure 1, Item 1). Refer to the following instructions:
 - a. Clean surface area with 50 / 50% mixture isopropyl alcohol with a clean cloth to remove dirt and other contaminants.
 - b. Allow surface area to dry.
 - c. Install emissions label onto engine intake manifold.
 - d. Apply uniform 20 psi (138 kpa) pressure to emissions label on engine intake manifold.

NOTE: Transfer necessary components from old engine to new engine.

9. Refer to appropriate International® CV™ service manual for engine installation instructions. Locate information under: *Engine Installation To Chassis*.
10. Check engine oil level. Adjust oil level as required.
11. Clean battery terminal with wire brush. Then clean with electrical contact cleaner and dry with shop air.
12. Apply **BLUE** dielectric grease to battery terminal stud, negative battery cable ring terminal, and threads of new battery stud nut.
13. Reconnect negative battery cable to negative terminal on main vehicle battery and install new battery terminal nut.
14. Using torque wrench, tighten battery stud nut to 12 - 15 lb-ft (16 - 20 N•m).
15. Start engine and inspect for any fluid leaks and / or abnormal noises.
16. Close and latch hood.
17. Remove wheel chocks.

LABOR INFORMATION

Operation number must appear on all claims.

Operation Number	Description	Time
A40-22111-1	Replace Engine; Transfer Parts. W/O Air Compressor	14.1 hrs.
A40-22111-2	Replace Engine; Transfer Parts. W/Air Compressor	16.1 hrs.

Table 3 Labor Information

WARRANTY CLAIMS

NOTE: All engines must be returned via the LTL shipping procedure. Refer to WIL2800033 in iKNow.

Warranty claim expense is to be charged to Warranty. Claims are to be submitted in the normal manner, making reference to Field Service Campaign 22111.

Section 7 of the Warranty Policy and Procedures Manual contains further information related to the submission and processing of AFC / Recall claims.

As with all claim submissions, items acquired locally must be submitted in the “Other Charges” tab. The cost of any bulk items (such as a bag of cable tie straps, roll of wire, barrel of oil, or tube of silicone) should be prorated for the cost of the individual pieces / amount used during each repair.

To make sure this important improvement is made in a timely manner, all claims for 22111 activity must be submitted by 01 June 2023 or within the normal warranty period for the component repaired, if after 01 June 2023.

	GROUP	NOUN	C	WARR.	TP	PAD
GROUP — Enter number						
NOUN — Leave blank						
C (CAUSE) — Enter either 1, 2, 3. (See below)						
1. Inspected (No repair required).						
2. Inspected and repaired.						
3. Defective part from parts stock.						
WARRANTY — (Warranty Code) Enter 40.						
TYPE PART — Enter P for type part causing failure.						
PAD — Enter 100						

0000047910