



SERVICE BULLETIN

**CONVENTIONAL CAB STRUCTURE FRONT
MOUNT REPAIR**

BULLETIN NO: SB-22-014

DATE: 6-8-2022

REFERENCE: HMM-220601-B1

SUBJECT VEHICLES: 2011MY-2019MY Conventional trucks equipped with a J08 engine

OVERVIEW:

Depending on vehicle application and operating conditions, subject vehicles may exhibit cracking around one or both of the cab structure forward mounts. This might be accompanied with an audible popping while driving on rough roads. This technical service bulletin provides instruction for installation of reinforcement plates to repair a cab with cracking around the forward mounts.

BEFORE YOU BEGIN:

- Read and understand all instructions before you begin the work.
- Park the vehicle on a flat, level and solid surface.
- Place the gear shift lever in "Neutral" or "Park".
- Apply the parking brake firmly and confirm parking brake activation.
- Turn off the engine and remove the key from the ignition switch.
- Always wear safety glasses or goggles to protect your eyes.
- Place wheel chocks in front of and behind all the wheels to prevent the vehicle from moving.
- Disconnect the battery.

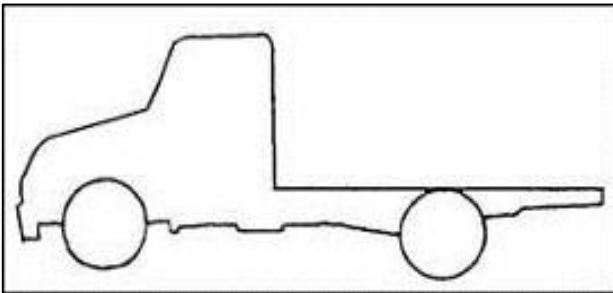


PARTS:

Part Number	Part Description	Quantity
57225EW011	Upper Reinforcement Plate	2
57229EW010	Lower Reinforcement Plate	2
SZ11916023	Bolt/Washer Assembly	2

VEHICLE PREPARATION:

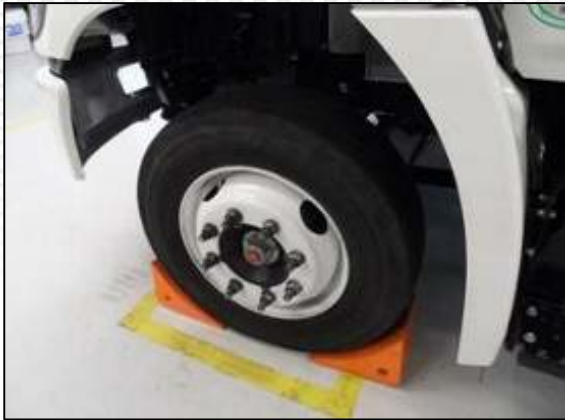
1. Park the vehicle on a flat, level and solid surface. Confirm the engine is stopped, the ignition switch is in the off (LOCK) position, and the key is removed.



2. Apply the parking brake.

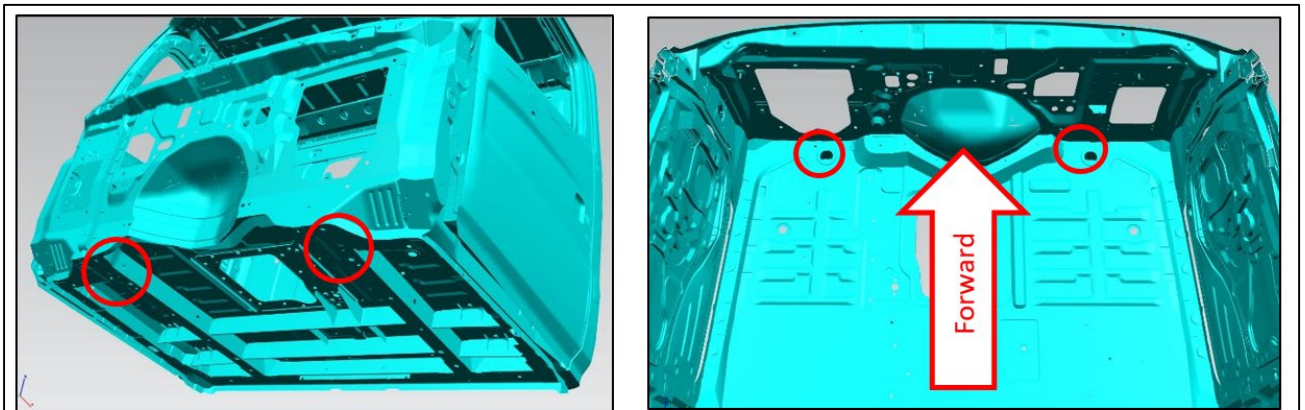


3. Chock all of the wheels.

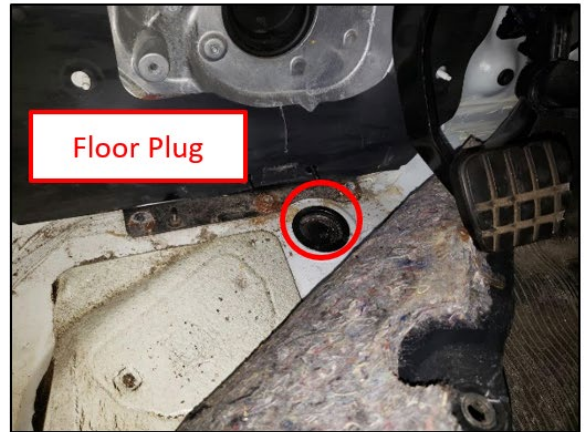


INSPECTION:

1. The location for the two potential crack locations are illustrated below.



2. To inspect, the floor liner will need to be pulled back on both sides of the vehicle by removing the retaining clips and lifting up the floor liner. Remove the cab floor plugs to inspect for cracking around the bolt washers. Driver side is shown below.



3. Example of a crack condition is shown in the photograph below. If there is no cracking, on both the driver side and the passenger side, do NOT proceed with this repair.

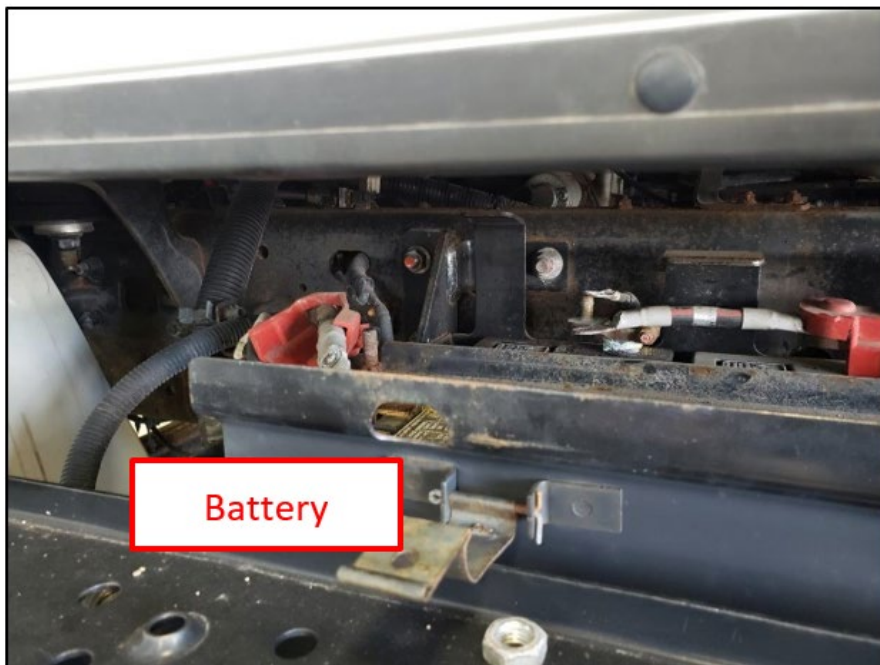


4. If cracking is identified in one or both sides, BOTH the driver side and passenger side of the cab floor forward mount channel will need to be reinforced with weld in place upper and lower reinforcement plates. Supporting the cab by means of an overhead hoist will be required throughout this repair procedure.

REPAIR PROCEDURE:

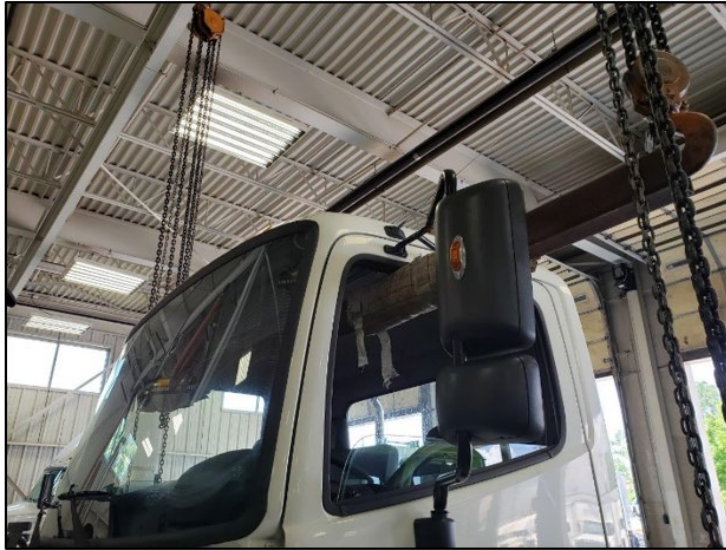
1. Verify the ignition switch is in the off position and disconnect both battery cables.

NOTICE: Failure to disconnect the battery prior to welding can damage vehicle control modules.

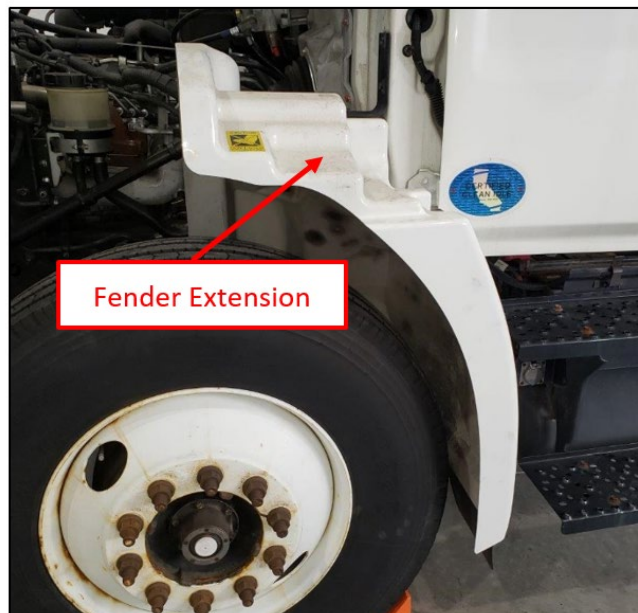


2. Using an overhead hoist, support the cab at the front corners of both the door openings on the driver and passenger side to remove the weight from the forward cab mounting points.

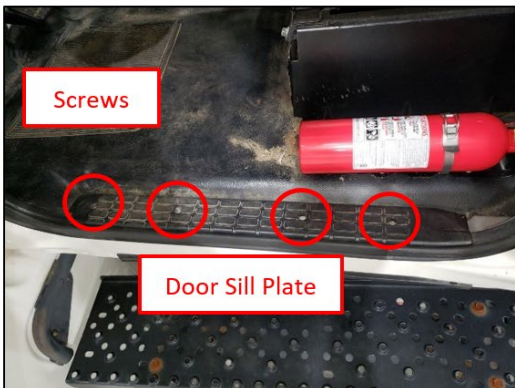
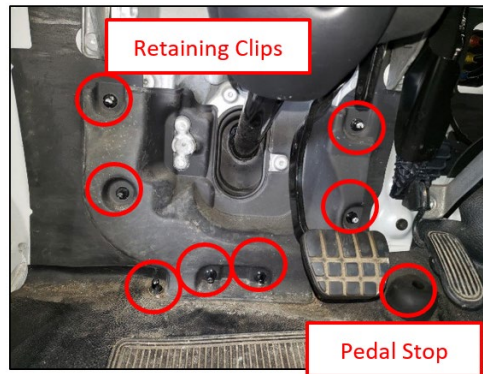
NOTICE: Care needs to be taken to prevent damage to the cab, doors and related trim.



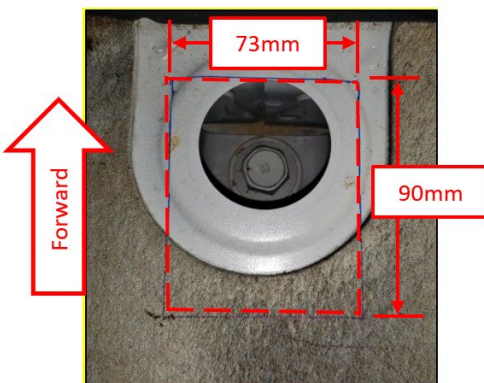
3. Open the hood and remove the six bolts and one nut securing the left side fender extension to the cab. Set the fender extension aside and retain all bolts, nuts, and hardware for reassembly.



4. Remove the retaining clips on the trim piece surrounding the steering column and on the floor mat below the brake pedal. Remove the screw securing the throttle pedal stop and the screws securing the door sill plate to the cab floor. Pull the floor mat clear of the body mount bolt access hole. Remove the floor plug.



5. To install the upper reinforcement plate, a small section of the interior floor pan must be cut out. Care should be taken when marking and cutting out this section. The section will be welded back into place once the upper reinforcement plate is installed.

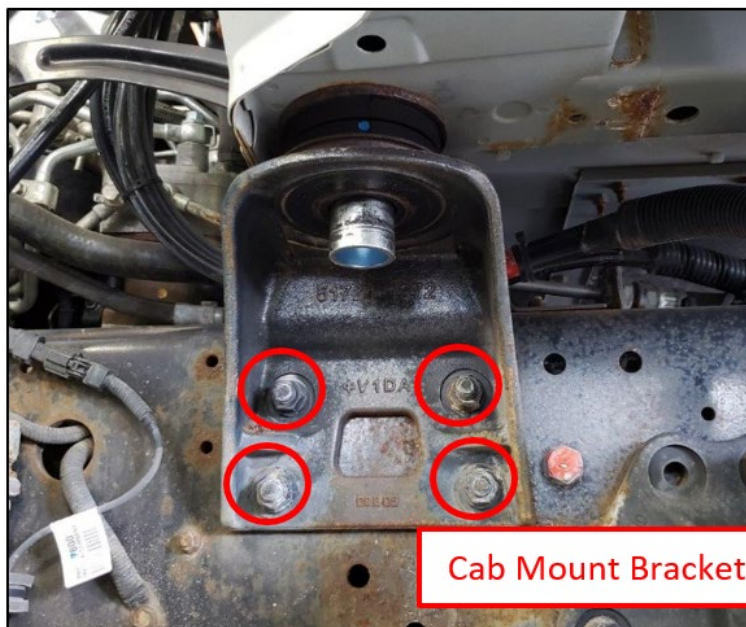


6. Remove the bolt and nut, washers and rubber insulators securing the cab to the driver side cab mount. Discard the bolt but retain the nut, washers and insulators for reassembly.



WARNING: The cab must be properly supported by the overhead hoist before removing the cab mount bracket.

7. Remove the four nuts and bolts securing the drive side cab mount bracket to the side rail. Retain the bracket, bolts, nuts, and rubber insulator for reassembly.



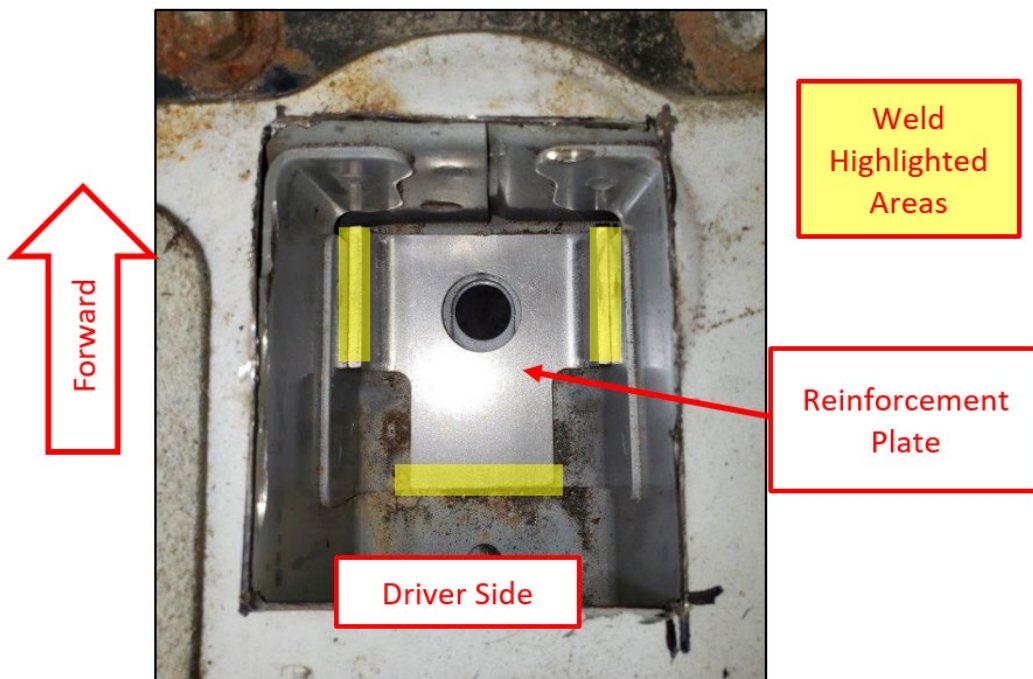
Cab Mount Bracket

WARNING: The cab structure is galvanized. Welding galvanized material creates toxic fumes. Always weld in a well ventilated area. Wear a respirator if sufficient ventilation cannot be achieved.

8. Place a 57725-EW011 upper reinforcement plate over the bolt hole in the cab floor as shown in the photographs below. Ensure the reinforcement plate is properly centered. Clean the cab sheet metal and weld the reinforcement plate to the cab in the areas highlighted yellow shown below. A bolt and nut can be used to hold the reinforcement in place if desired during welding.

NOTICE: Ensure the battery is disconnected prior to welding to avoid damage to vehicle control modules. Utilize welding blankets to protect nearby components as necessary.

NOTICE: Only certified welders should perform this welding operation.

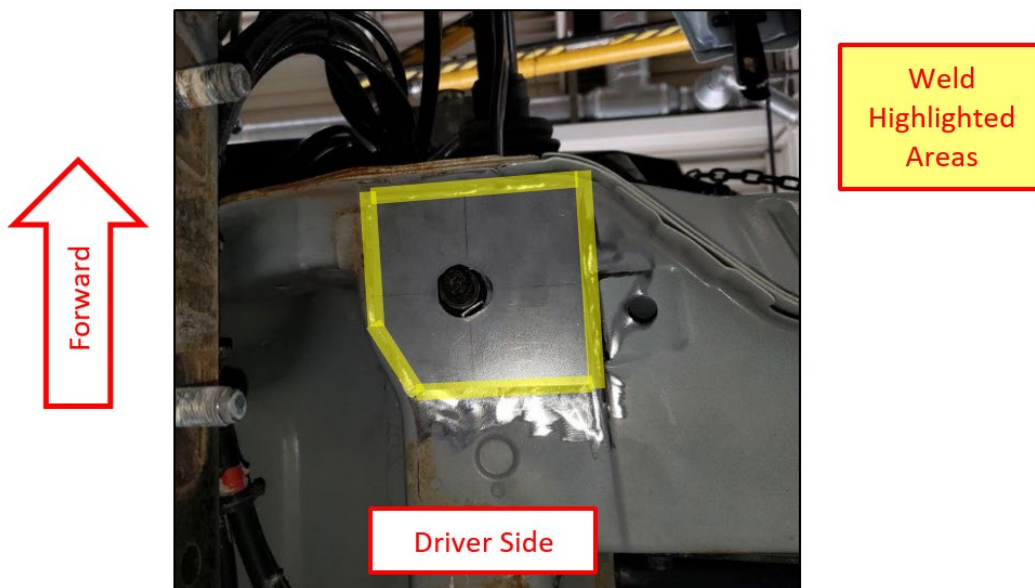


WARNING: The cab structure is galvanized. Welding galvanized material creates toxic fumes. Always weld in a well ventilated area. Wear a respirator if sufficient ventilation cannot be achieved.

9. Place a 57229-EW010 lower reinforcement plate on the underside of the cab as shown in the photographs below. Ensure the reinforcement plate is properly centered and positioned correctly. Clean the cab sheet metal and weld the reinforcement plate to the cab in the areas highlighted yellow shown below. A bolt and nut can be used to hold the reinforcement in place if desired during welding.

NOTICE: Ensure the battery is disconnected prior to welding to avoid damage to vehicle control modules. Utilize welding blankets to protect nearby wiring and piping.

NOTICE: Only certified welders should perform this welding operation.



WARNING: The cab structure is galvanized. Welding galvanized material creates toxic fumes. Always weld in a well ventilated area. Wear a respirator if sufficient ventilation cannot be achieved.

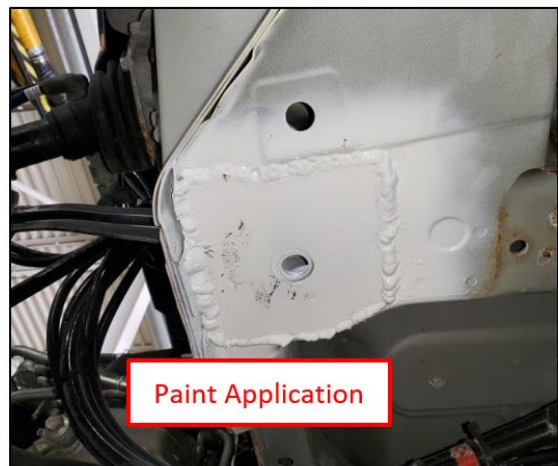
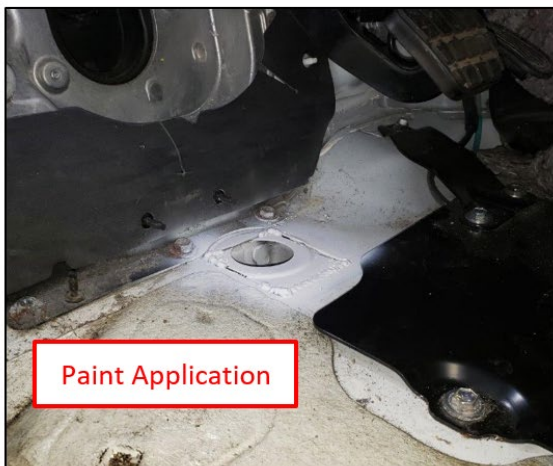
10. Weld the interior floor pan section back in the place that was cut out for access in step 5.

NOTICE: Ensure the battery is disconnected prior to welding to avoid damage to vehicle control modules. Utilize welding blankets to protect nearby components as necessary.

NOTICE: Only certified welders should perform this welding operation.

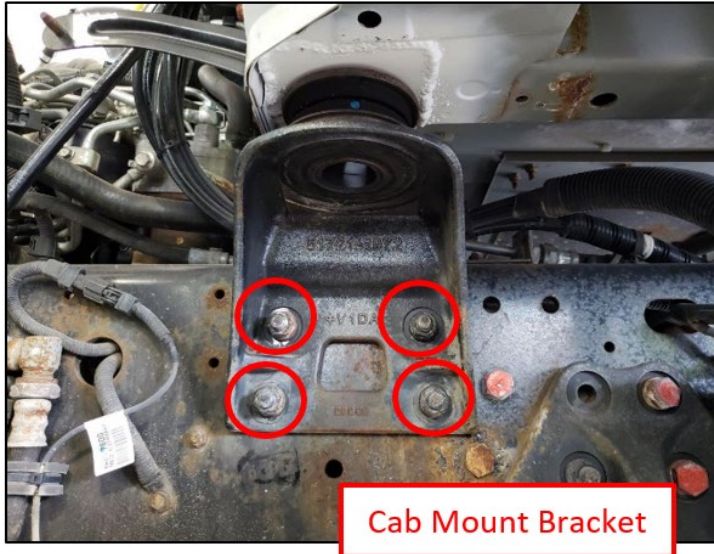
WARNING: The metal may be hot and could cause burn injuries. Make sure the metal has cooled before painting.

11. After the metal has cooled, paint the floor pan and cab underside areas to prevent corrosion.



12. Reinstall the cab mount bracket along with the rubber insulator to the side rail. Tighten the bolts and nuts to the specified torque.

Specified Torque: 84 lb-ft (114 Nm)

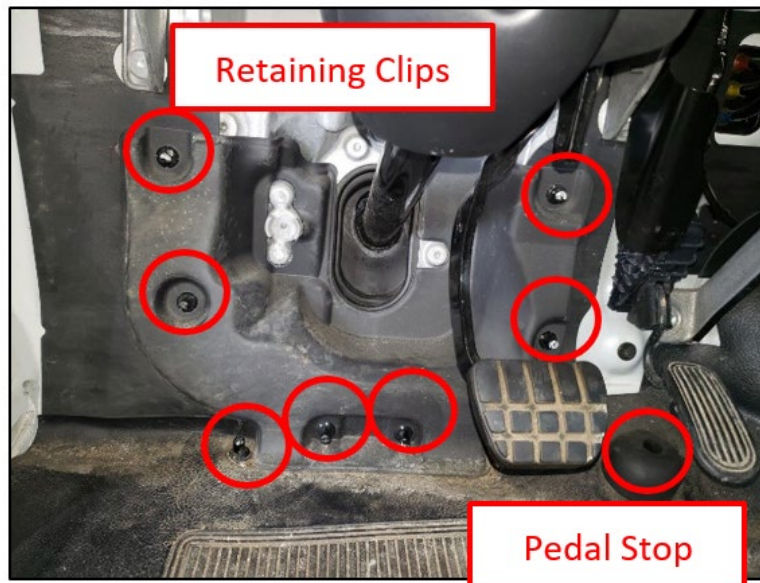


13. Install a new SZ119-16023 bolt and washer assembly through the cab and mount assembly along with the nut, washer, and rubber insulators removed in step 6. Tighten to the specified torque.

Specified Torque: 162 lb-ft (220 Nm)

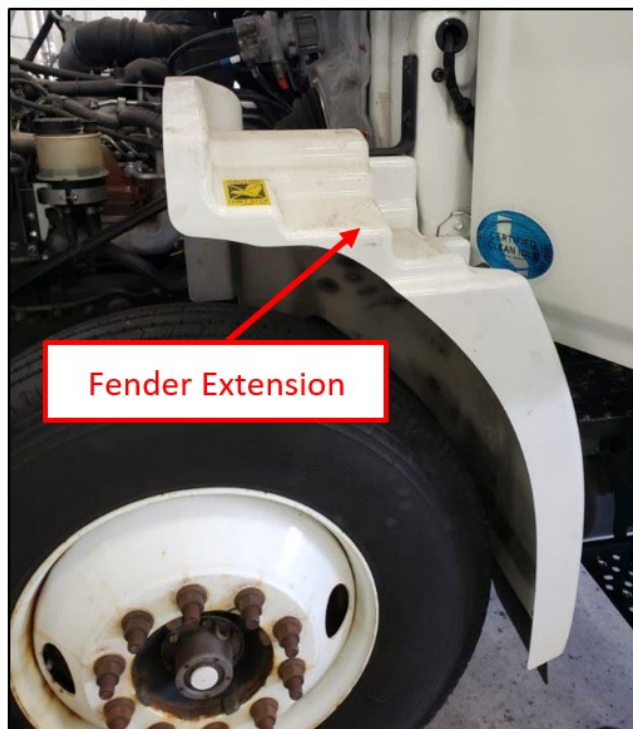


14. Reinstall the rubber plug, floor covering, steering column trim, throttle pedal stop, and door opening trim removed in step 4.



15. Reinstall the fender extension and tighten the fasteners to the specified torque.

Specified Torque: 16 lb-ft (22 Nm)

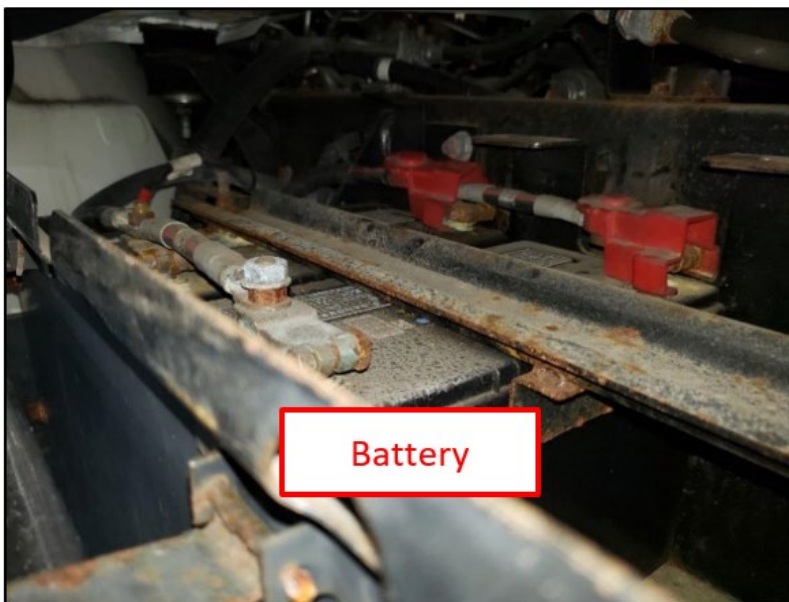


16. WARNING: Prior to repeating the repair procedure on the passenger side, review all Warnings. Repeat the repair procedure steps 3 through 15 on the passenger side of the vehicle.

17. Release the overhead hoist supporting the cab.



18. Reconnect the negative battery terminal.



FINAL INSPECTION:

1. To complete this technical service bulletin, review the bulletin and confirm the following:
 - All fasteners that were removed have been reinstalled and torqued to their specified torque.
 - Battery connections that were disconnected have a clean secure connection.
 - The welded area is correctly welded, and all bare metal related to this repair has been covered with paint.
 - The floor plug, floor mat, steering column trim, floor sill plate and throttle stop have all been positioned correctly and secured with fasteners.

CLAIM APPLICATION

Hino Base Warranty of 2 Years/Unlimited miles

Reimbursable in accordance within the terms and policies of the Hino limited warranties.

Cab Structure Forward Mount Repair:

- a) Labor charge: 4.0 Hours
- b) Warranty code: 71112
- c) Trouble code: 51
- d) Operation code: 71250AOT
- e) Original failed part: 9999999999

