



NUMBER: 23-019-22

GROUP: 23 - Body

DATE: May 21, 2022

This bulletin is supplied as technical information only and is not an authorization for repair. No part of this publication may be reproduced, stored in a retrieval system, or transmitted, in any form or by any means, electronic, mechanical, photocopying, or otherwise, without written permission of FCA US LLC.

SUBJECT:

Check Strap Webbing Kit on Driver's Side Front Door

OVERVIEW:

This bulletin involves installing a webbing kit on the front left driver's door for the door check strap.

MODELS:

2014-2020 (VF) RAM ProMaster

NOTE: This bulletin applies to vehicles within the following markets/countries: North America and EMEA.

SYMPTOM/CONDITION:

The repair eliminates the over swing when opening the driver's side door.

DIAGNOSIS:

If the customer describes the symptom/condition listed above, perform the Repair Procedure.

PARTS REQUIRED:

Qty.	Part No.	Description
1 (AR)	68531589AA	Kit, Door Check Strap (Fig. 1)
1 (AR)	68503723AB	Nylon Check Strap
1 (AR)	68503727AA	Bracket-Tapping
1 (AR)	7CD83JXWAB	Molding Sill
1 (AR)	7CD87JXWAB	Cap



Fig. 1
Door Check Strap Kit

- 1 - 8 X M6 Fasteners
- 2 - 4 X M6 Nuts
- 3 - 2 X Metallic Bushings
- 4 - 2 X Retainer Ring
- 5 - 1 X Door Check Strap
- 6 - 1 X M6 Fastener

REPAIR PROCEDURE:

1. Remove the interior trim components (Steering cover, foot rest, carpet and sill front left covers) and harness clip:
 - Lower steering cover, Refer to the detailed service procedures available in DealerCONNECT> Service Library under: Service Info>19 - Steering / Column / Shroud, Steering Column, Lower / Removal.
 - Foot rest.

NOTE: To remove the foot rest you will need to remove some of the front attachments of the foot step.

- Carpet. Refer to the detailed service procedures available in DealerCONNECT> Service Library under: Service Info>23 - Body / Interior / Carpet / Removal.
 - Sill front covers. Refer to the detailed service procedures available in DealerCONNECT> Service Library under: Service Info>23 - Body / Interior / Plate, Scuff, Front Door Sill / Removal.
 - Harness clip.
 - Carefully open 4 white clips shown in images.
 - Release locking mechanism with a thin, flat-headed screwdriver.
2. Secure the harnesses.
 - Insert all harnesses into a 25 mm (1 in) diameter convolute.
 - Spot tape (3 turns) the START and END of convolute.
 - Fully wrap tape the length of convolute.
 3. Place the check strap bracket on the floor (Fig. 1) . Since it follows shock tower's surface, it will be self centered (Fig. 2) .

NOTE: The check strap bracket has to be positioned between the slot in the sill and the slot in the shock tower. Both are used by the electrical harnesses (Fig. 2) .



Fig. 2
Check Strap Bracket Location Between Harness

1 - Harness Locators

4. Using the check strap bracket as a template. Once you make sure the check strap bracket fits the shock's tower geometry, mark its perimeter (Fig. 3) .
5. Using a utility knife or equivalent tool, scribe the perimeter of the check strap bracket/template into the deadener material (Fig. 3) .
6. Remove the Body Control Module (BCM) and bracket to avoid any heat buildup. Refer to the detailed service procedures available in DealerCONNECT> Service Library under: Service Info> 08 - Electrical / 8E - Electronic Control Modules / Module, Body Control (BCM) / Removal.
7. Using a heat gun, heat the central portion of the deadener material (Fig. 3) .



Fig. 3
Marking, Scribing and Heat Gun

- Using the scraper remove the deadener material carefully. Do not use a hammer/mallet as this may damage the panel (Fig. 4) .

NOTE: Confirm that there are no deadener remains on the panel inside the bracket perimeter.



Fig. 4
Deadner Material to be Removed

9. Place the webbing check strap/bracket into position and confirm that the bracket rests face to face on the surface of the panel (Fig. 5) .
 - Reconfirm that the 4.7 mm (.18 in) separation with the sill trim, before marking the holes (Fig. 5) .

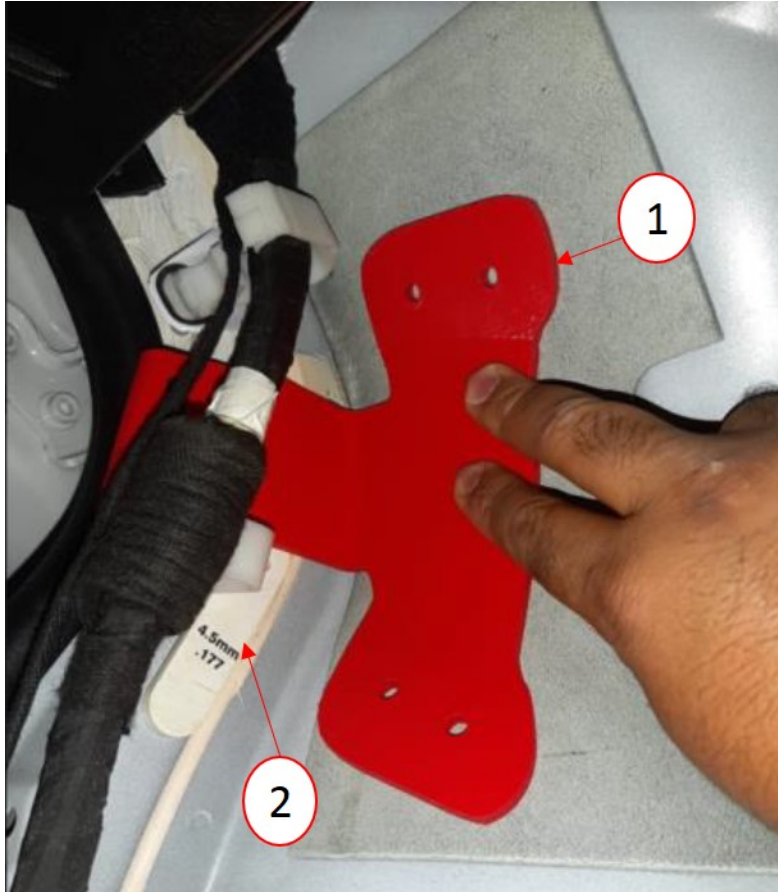


Fig. 5
Gauge

- 1 - Bracket
 - 2 - Gauge
-

10. Using the bracket as reference, mark the hole centers. Punch each center with a center punching tool, or use a center drill bit (Fig. 6) .
11. Drill thru the shock tower reinforcement, using an M6 drill bit. Use a stopper to avoid damaging suspension components on the outside of the vehicle (Fig. 6) .



Fig. 6
Bracket Hole Locations

12. From the external side of the shock reinforcement, and using a scraper, remove a 1.5 cm X 1.5 cm (0.6 in x 0.6 in) square of anti- chipping material at each hole location.
13. From inside the vehicle prep for applying rust inhibitor sealer primer to the area where the perimeter was cut out of the deadener patch and the drilled bolt holes in the body (Fig. 7) .

NOTE: Let the rust inhibitor sealer primer dry for 10 minutes.



Fig. 7
Rust Inhibitor

14. Install the BCM and bracket back into position. Refer to the detailed service procedures available in DealerCONNECT> Service Library under: Service Info> 08 - Electrical / 8E - Electronic Control Modules / Module, Body Control (BCM) / Installation.

15. Position webbing check strap bracket in location (Fig. 8) .
16. Install the four M6 bolts. Loctite® has already been applied to the bolts.
17. Install and tighten the four M6 nuts. Tighten to 9 N·m (79 in.lbs.) in a (1-3-2-4) pattern starting at the top left (Fig. 8) .

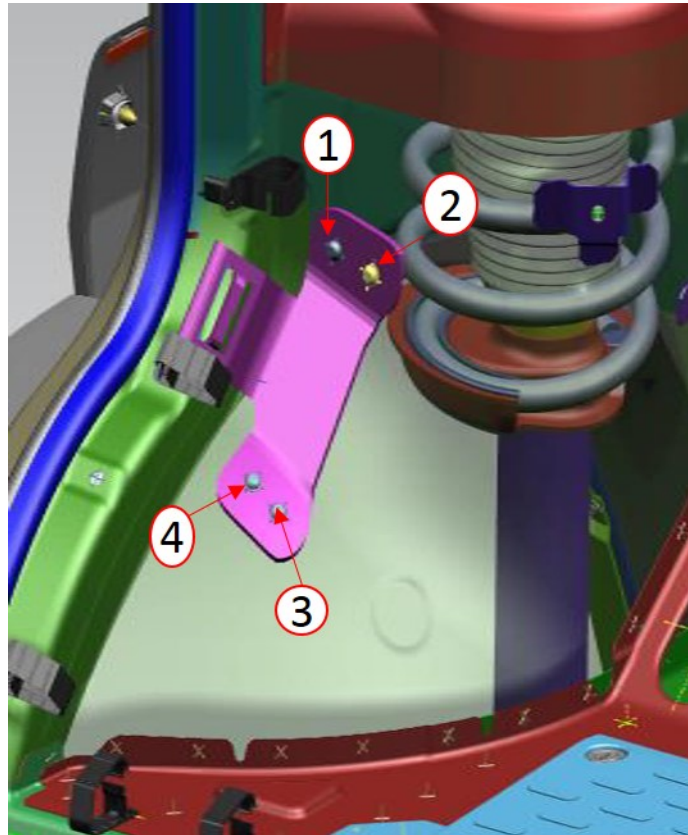


Fig. 8

Tightening Sequence (1-3-2-4)

18. Apply a rust inhibitor sealer primer to cover the whole nut and bolt system from outside of the vehicle.

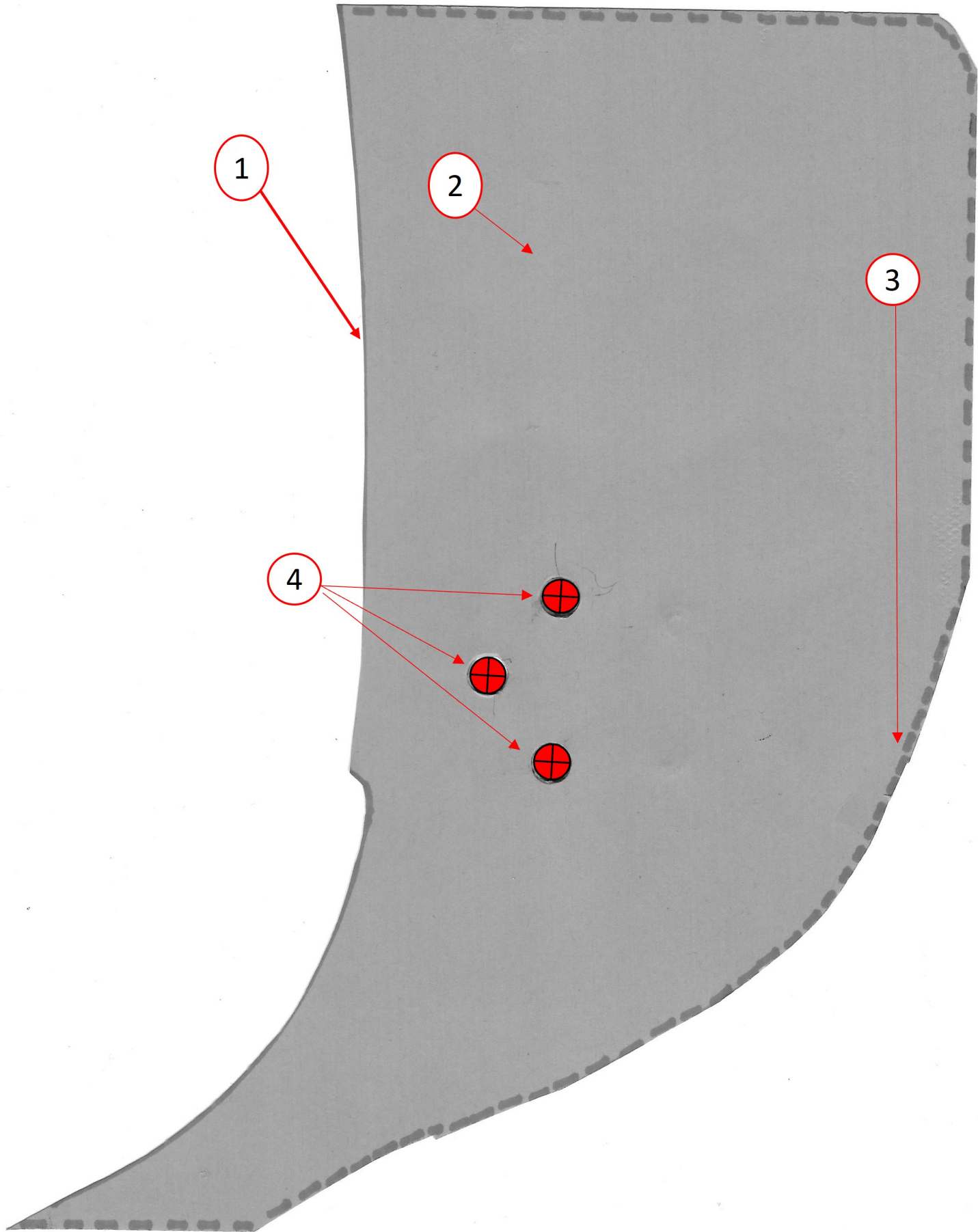
NOTE: Let the rust inhibitor sealer primer dry during 10 minutes prior proceeding to the next steps.

19. Assemble the other components from the check strap solution package.
20. Install the interior trim components (Steering cover, foot rest, carpet and sill front left covers) and harness clip:
 - Harness clip.
 - Carpet, Refer to the detailed service procedures available in DealerCONNECT> Service Library under: Service Info>23 - Body / Interior / Carpet / Installation.
 - Sill front covers, Refer to the detailed service procedures available in DealerCONNECT> Service Library under: Service Info>23 - Body / Interior / Plate, Scuff, Front Door Sill / Installation.
 - Foot rest.
 - Lower steering cover, Refer to the detailed service procedures available in DealerCONNECT> Service Library under: Service Info>19 - Steering / Column / Shroud, Steering Column, Lower / Installation.
21. Remove the front door speaker. Refer to the detailed service procedures available in DealerCONNECT> Service Library under: Service Info>08 - Electrical / 8A - Audio/Video/ Entertainment/Connectivity / Speaker / Removal.

22. Print out this full page door template to scale (Fig. 9) .

NOTE: Different printers have different printing scales, a trial and error may have to be performed before you will get the exact template from your printer (Set the printer to print actual size). (Refer to (Fig. 10) and (Fig. 11) for rough measurements.)

This will be only temporary until a template can be provided in the Mopar kit.



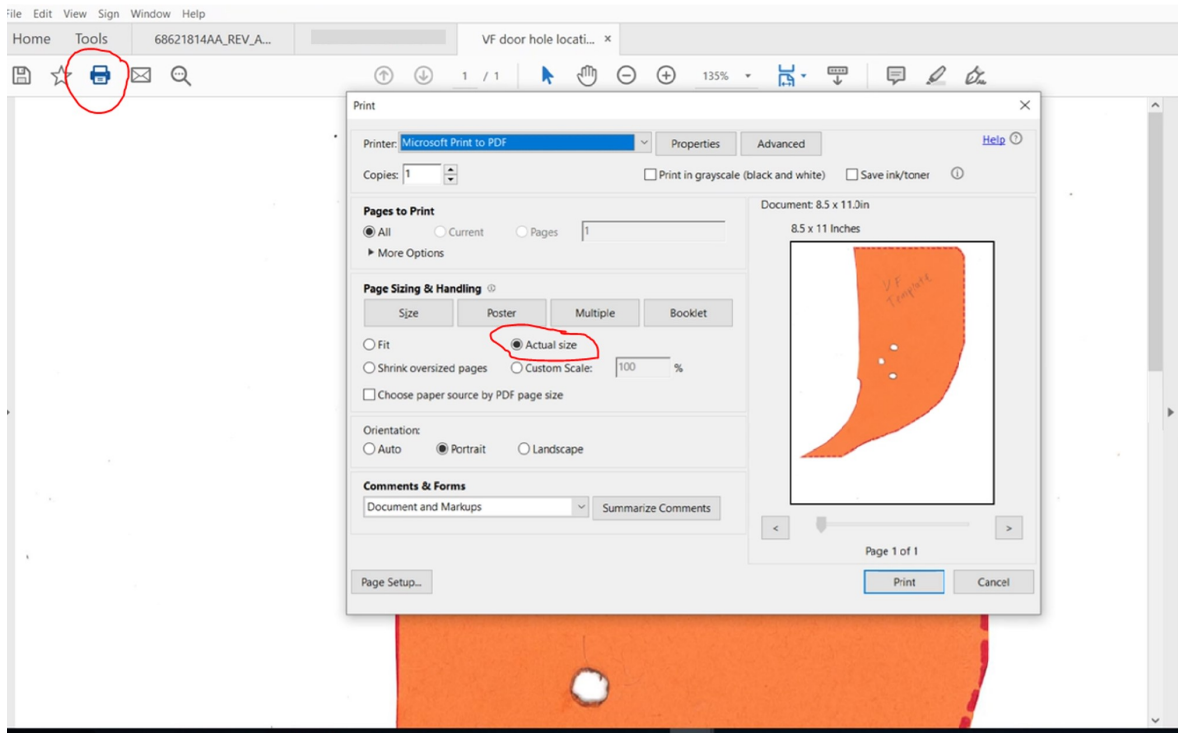


Fig. 10
Printer Set up



Fig. 11
Initial Printed Measurements of Template For Reference

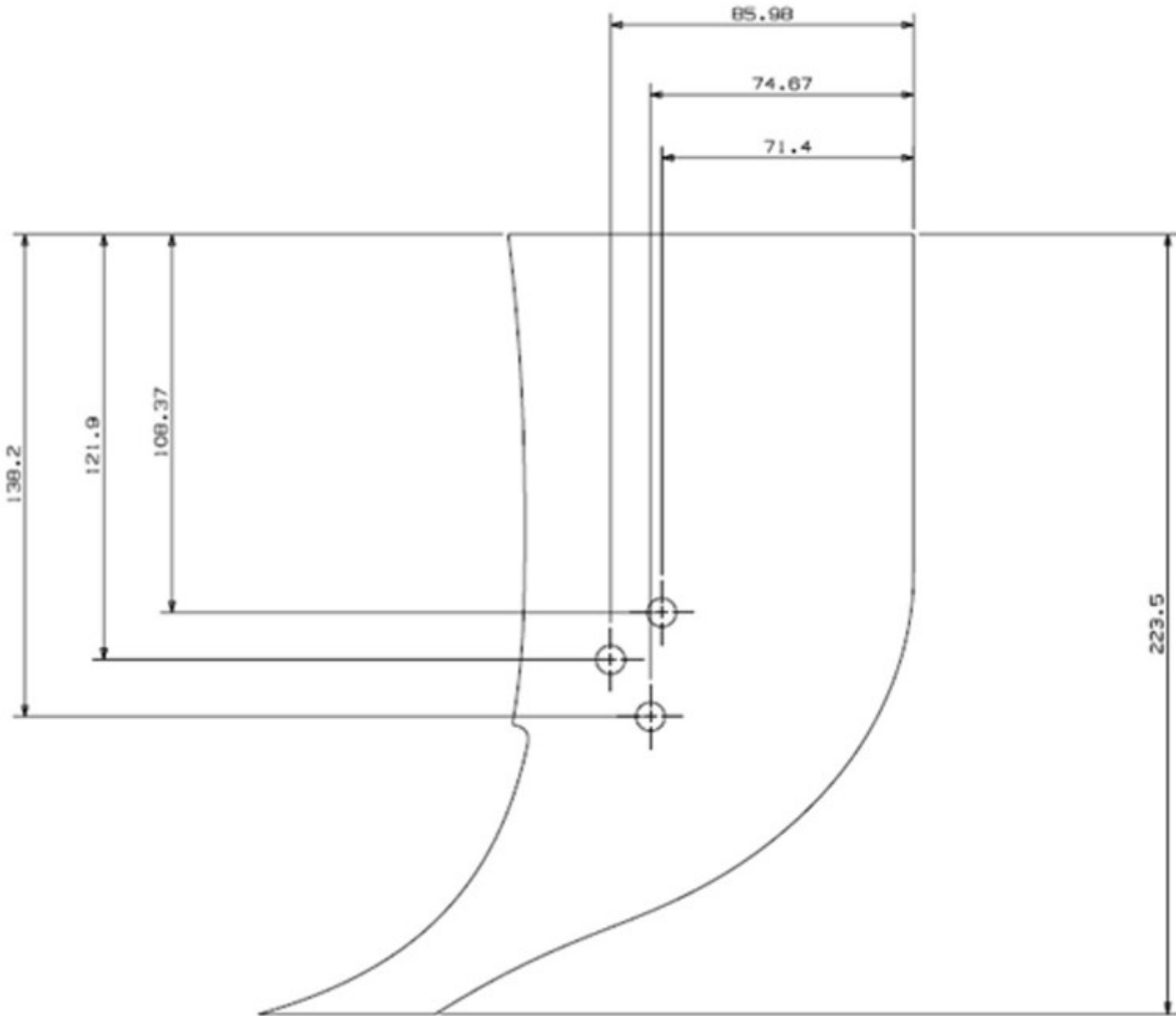


Fig. 12

Template Dimensions to Measure after print to scale (Measurements in the picture are millimeters)

- 23. Install and tape the printed door template to the contour of the door panel and the outer door contour as pictured (Fig. 13) .



Fig. 13
Printed Door Template

24. Mark the hole centers according to the printed template (Fig. 12) .
25. Drill thru the door sheet metal, using an M6 drill bit. Use a stopper to avoid damaging outer panel of the door (Fig. 14) .
26. Apply a rust inhibitor sealer primer where the holes where drilled (Fig. 14) .

NOTE: Let the rust inhibitor sealer primer dry during 10 minutes prior to proceeding to the next steps.



Fig. 14
Drilled Locations

27. Install the webbing check strap through the door sill trim and install door sill trim into position.
28. Position webbing check strap bracket into location (Fig. 15) .
29. Install the tapping plate bracket inside the door.
30. Install and tighten the two of the three M6 bolts (Loctite[®] has already been applied to the bolts) to the tapping plate bracket and the door. Tighten to 9 N·m (79 in. lbs.) (Fig. 15) .
31. Remove door check strap. Refer to the detailed service procedures available in DealerCONNECT> Service Library under: Service Info>23 - Body / Doors - Front / Check, Door / Removal.
32. Install door check strap and install kit (Fig. 1) . Refer to the detailed service procedures available in DealerCONNECT> Service Library under: Service Info>23 - Body / Doors - Front / Check, Door / Installation.

- 33. Install door trim cap and the other M6 bolts (Loctite[®] has already been applied to the bolts) to the tapping plate bracket and the door. Tighten to 9 N·m (79 in. lbs.).(Fig. 15) .

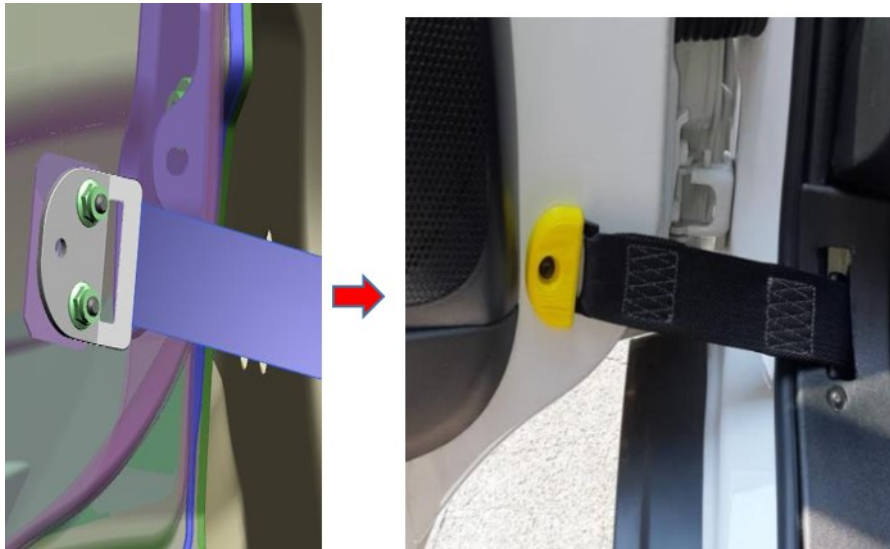


Fig. 15
Webbing Check Strap Installation

- 34. Install the front door speaker. Refer to the detailed service procedures available in DealerCONNECT> Service Library under: Service Info>08 - Electrical / 8A - Audio/Video/ Entertainment/Connectivity / Speaker / Installation.

POLICY:

Reimbursable within the provisions of the warranty.

TIME ALLOWANCE:

Labor Operation No:	Description	Skill Category	Amount
23-40-27-95	Check Strap Reinforcement Webbing, Repair (Left Side Only) (1 - Semi-Skilled)	12 - Body Repair	2.3 Hrs.

FAILURE CODE:

ZZ	Service Action
----	----------------