

# Peeling Panoramic Roof Center Glass Weatherstrip

**Service Category** Vehicle Exterior

**Section** Sliding Roof/Convertible

**Market** USA

Toyota Supports  
ASE Certification 

## Applicability

YEAR(S)	MODEL(S)	ADDITIONAL INFORMATION
2018 - 2022	Camry, Camry HV	

### REVISION NOTICE

**April 13, 2022 Rev2:**

- Applicability has been updated to include 2022 model year Camry and Camry Hybrid vehicles.

**September 16, 2021 Rev1:**

- Applicability has been updated to include 2021 model year Camry and Camry Hybrid vehicles.
- Any previous printed versions of this bulletin should be discarded.

## Introduction

Some 2018 – 2022 model year Camry and Camry Hybrid vehicles may exhibit the weatherstrip on the panoramic roof center glass peeling on the edges of the glass. Follow the Repair Procedure in this bulletin to address this condition.

## Warranty Information

OP CODE	DESCRIPTION	TIME	OFP	T1	T2
BD2004	R & R Sliding Roof Weatherstrip	1.0	63251-06100	62	15

### APPLICABLE WARRANTY

- This repair is covered under the Toyota Basic Warranty. This warranty is in effect for 36 months or 36,000 miles, whichever occurs first, from the vehicle's in-service date.
- Warranty application is limited to occurrence of the specified condition described in this bulletin.

## Peeling Panoramic Roof Center Glass Weatherstrip

### Parts Information

PART NUMBER	PART NAME	QTY
63251-06100	Weatherstrip, Sliding Roof	1

### Required Tools & Equipment

REQUIRED TOOLS & MATERIAL	QTY
3M™ 94 Primer	1
180-grit Sandpaper	1
Isopropyl Alcohol 70%	1

### Repair Procedure

- Confirm the condition exists.  
Does the vehicle exhibit the weatherstrip on the panoramic roof center glass peeling on the edges of the glass?
  - YES** — Continue to step 2.
  - NO** — This bulletin does NOT apply. Continue diagnosis using the applicable Repair Manual.

**Figure 1.**

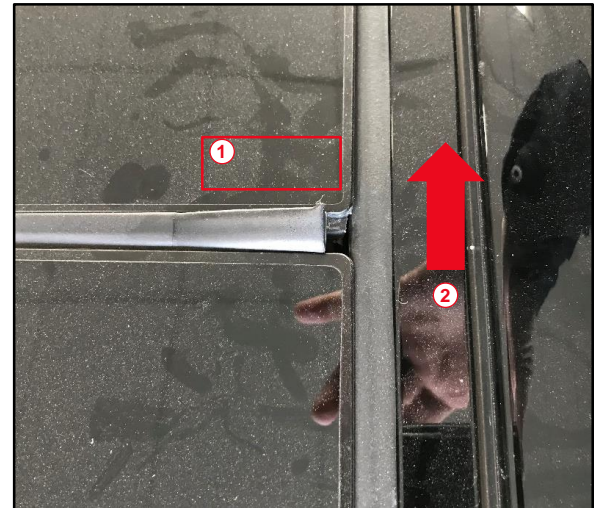


## Peeling Panoramic Roof Center Glass Weatherstrip

### Repair Procedure (continued)

2. Place tape on the glass near the left-hand side AND right-hand side corners to avoid scratching the glass (at least one-fourth the width of the glass). The left-hand side corner is shown; repeat the process for the right-hand side.

**Figure 2. Left-hand Side Corner**



1	Place Tape Here
2	Back of the Vehicle

3. Remove the existing weatherstrip.

**Figure 3.**



4. Clean the rims using 180-grit sandpaper.

**Figure 4.**



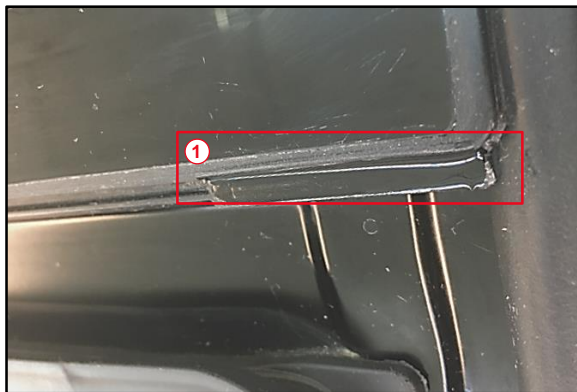
1	Rim Area
---	----------

## Peeling Panoramic Roof Center Glass Weatherstrip

### Repair Procedure (continued)

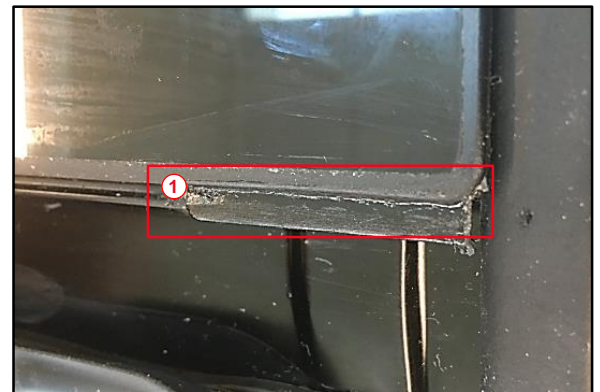
5. Clean the rim with isopropyl alcohol until the surface is smooth and black.
6. Apply 3M™ 94 Primer and let it dry for AT LEAST 90 seconds. Make sure the shine is gone BEFORE proceeding.

**Figure 5. Wet Primer**



1	Rim Area
---	----------

**Figure 6. Dry Primer**



1	Rim Area
---	----------

7. Line up the ends of the weatherstrip to the edges and make sure both ends align properly.

**Figure 7.**



8. Press the mechanical lock on the ridges on both ends as shown.

**NOTE**

The ridge is the point where the rim ends on the inside.

**Figure 8.**



## Peeling Panoramic Roof Center Glass Weatherstrip

### Repair Procedure (continued)

9. Once the edges are secured, engage the center of the weatherstrip and continue toward the ends. Verify the entire length of the weatherstrip is engaged in the mechanical lock.

#### NOTE

The entire middle area has mechanical locking to secure the weatherstrip.

Figure 9.



10. Remove the cover tape on the ends of the weatherstrip and push the ends onto the rims on both sides. Press firmly on the rim area of the weatherstrip to ensure proper adhesion. Hold and press firmly for five to seven seconds.

Figure 10.

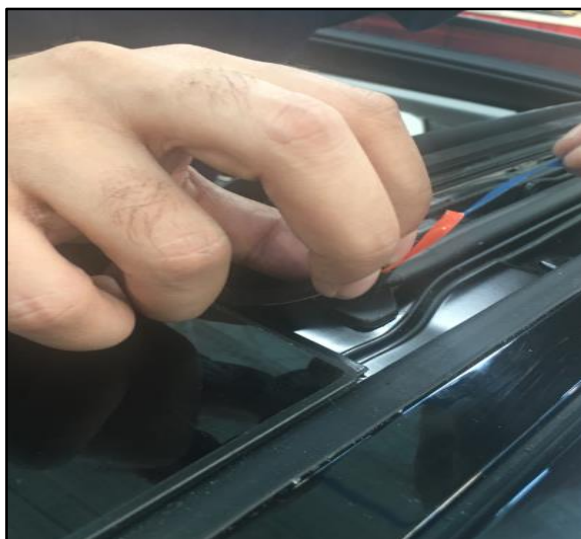


Figure 11.



11. AFTER the repair is complete, allow the adhesive to cure for AT LEAST 24 hours.

#### NOTICE

- Allow the adhesive to cure for 24 hours.
- Do NOT wash the vehicle for 24 hours.
- Keep the vehicle away from water and rain for 24 hours.