

**SIB 65 01 22**

2022-04-29

Knee Air Bag Check Control Message G01 Variants

This Service Information Bulletin (Revision 2) replaces SI B65 01 22 **dated April 2022**.

What's New (Specific text highlighted):

- Correction / Procedure / Parts: This repair has been modified- the knee air bag wiring harness on both sides will be replaced.
- Claim Information: Labor operation for removal of the center console has been added

MODEL

E-Series	Model Description	Production Date	Affected Option Code
G01	X3 Sports Activity Vehicle (SAV)	From Start of Production	All US vehicles are equipped with Knee Air Bags as standard equipment
G02	X4 Sports Activity Coupe (SAC)		
F97	X3 M SAV		
F98	X4 M SAC		

SITUATION

A check control message for the restraint system appears. In the instrument cluster, the red air bag warning light lights up permanently.

One of the following fault codes is stored in the ACSM (air bag control unit):

- **930949** - Knee airbag, driver: short circuit to negative terminal
- **93094F** - Knee airbag, front passenger: short circuit to negative terminal

CAUSE

The wiring harness going to the knee air bag may be rubbing against the support tube of the instrument panel.

CORRECTION

Refer to Attachment

PARTS INFORMATION

Refer to Attachment

CLAIM INFORMATION

Refer to Attachment

Supporting Materials

[picture_as_pdf B65 01 22_REV02.pdf](#)

Service Information Bulletin

Audio, Navigation, Information, Safety Systems

April 29, 2022

B65 01 22

KNEE AIR BAG CHECK CONTROL MESSAGE G01 VARIANTS

This Service Information Bulletin (Revision 2) replaces SI B65 01 22 **dated April 2022**.

What's New (Specific text highlighted):

- **Correction / Procedure / Parts:** This repair has been modified- the knee air bag wiring harness on both sides will be replaced.
- **Claim Information:** Labor operation for removal of the center console has been added

MODEL

E-Series	Model Description	Production Date	Affected Option Code
G01	X3 Sports Activity Vehicle (SAV)	From Start of Production	All US vehicles are equipped with Knee Air Bags as standard equipment
G02	X4 Sports Activity Coupe (SAC)		
F97	X3 M SAV		
F98	X4 M SAC		

SITUATION

A check control message for the restraint system appears. In the instrument cluster, the red air bag warning light lights up permanently.

One of the following fault codes is stored in the ACSM (air bag control unit):

930949 - Knee airbag, driver: short circuit to negative terminal

93094F - Knee airbag, front passenger: short circuit to negative terminal

CAUSE

The wiring harness going to the knee air bag(s) may be rubbing against the support tube of the instrument panel.

CORRECTION

Remove the center console to access the ACSM control module.

Remove the knee air bags on **both sides** of the vehicle.

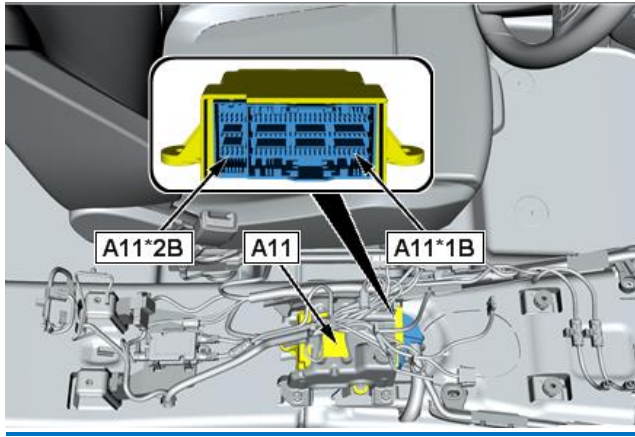
Apply felt tape to the 5 locations identified below where the harness may short out against the instrument panel (IP; aka dashboard) metal framework.

- **To access these locations and perform this bulletin's recommended repairs, the dashboard cover does not need to be removed**
- **Only if further access is needed, for example to remove sharp edges from the Instrument Panel in a hard to access location then submit an INFO ONLY Tsara case with pictures to document why the dashboard cover was removed. Reference that TSARA case number in your warranty comments section.**

Run new air bag repair wiring harnesses from the ACSM control module to both knee air bags. **(Both harnesses are run regardless of whether there is a fault for one side only.)**

PROCEDURE

1-Perform a vehicle test with ISTA.



2-Remove the **center console** as per **Repair Instructions 51 16 165** to access the Air Bag Control Module **A11 (ACSM)** wiring connector (**A11*2B**).

Check the ACSM module for signs of corrosion within the electrical connectors.

3- Follow **Repair Instructions 72 12 004** to remove the **driver's knee air bag**.

- Unplug the connector (**B8*1B**) on the knee air bag on the driver's side
- Cut the knee air bag wiring harness near the connector and tie back the cut wiring with a cable strap

4-Follow **Repair Instructions 72 12 006** to remove the **passenger's knee air bag**.

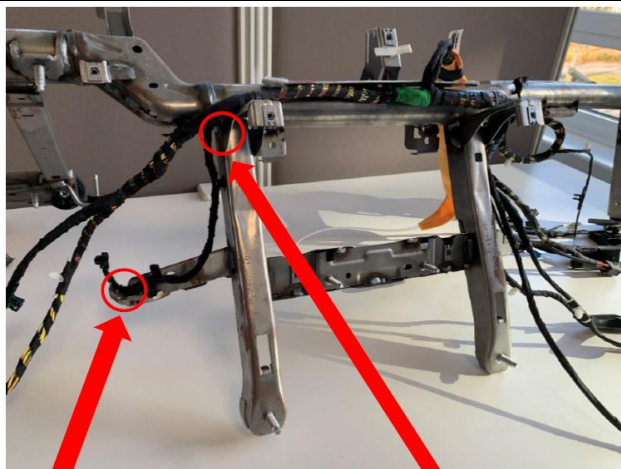
- Unplug the connector (**B77*1B**) on the knee air bag on the passenger's side
- Cut the knee air bag wiring harness near the connector and tie back the cut wiring with a cable strap
- **The repair wiring will be run in conjuncture with additional harness protection addressed in the next steps**

5-Apply felt tape to the 5 locations pictured below.

- For the affected locations 1, 4, 5 the felt tape must wrap around the edge of the metal.

All pictures below show the wiring harness layout and the instrument panel (IP) metal framework removed from the vehicle. These pictures were taken for clarity.

To perform this Service Bulletin, it is NOT necessary to strip the vehicle down to this 'bare frame' status.



Location 1

Location 2

Drivers side locations 1 and 2.

If metal residue or welding residue are visible on the support tube, they must be removed.

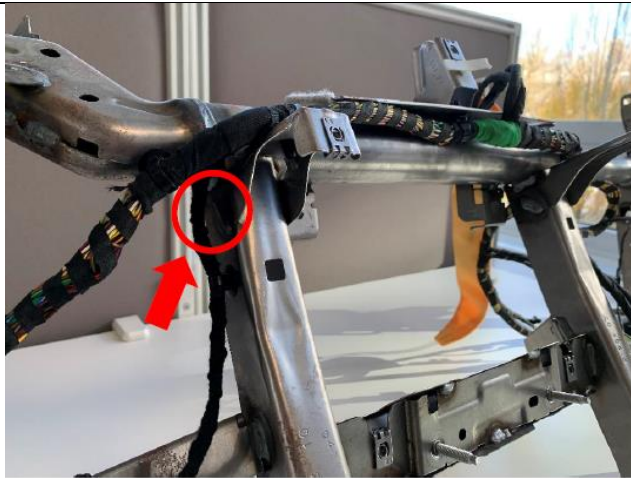


Drivers side location 1.

Apply felt tape to location 1 on the support tube.
(Felt tape part number **54 34 7 248 700**).

Glue the felt generously onto the support tube or
to the corresponding edge.

Important: The felt must be glued around the
edge!



Drivers side location 2.

Apply felt tape to location 2 on the support tube.
(Felt tape part number **54 34 7 248 700**).

Glue the felt generously onto the support tube or
to the corresponding edge.



Overall view of passenger side locations 3, 4, 5.

Each location shown in separate detail photos
below.

If metal residue or welding residue are visible on
the support tube, they must be removed.

Location 3

Location 4

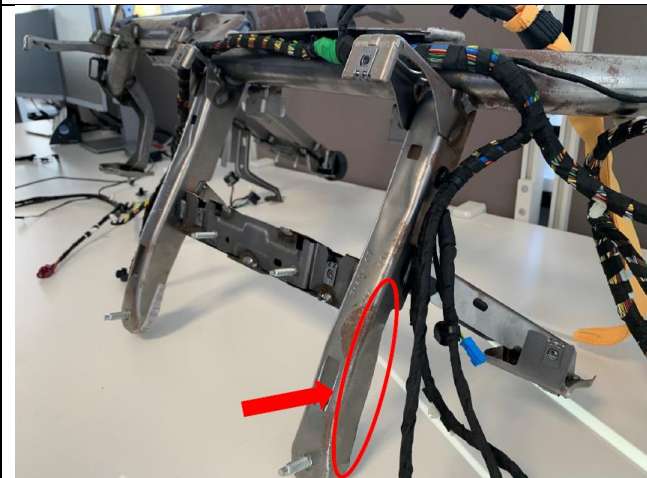
Location 5



Passenger side location 3.

Apply felt tape to location 3 on the support tube.
(Felt tape part number **54 34 7 248 700**).

Glue the felt generously onto the support tube or
to the corresponding edge.

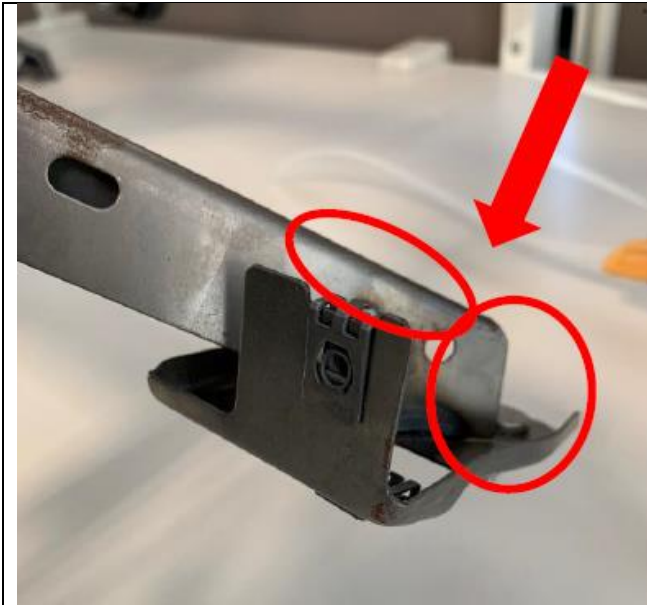


Passenger side location 4.

Apply felt tape to location 4 on the support tube.
(Felt tape part number **54 34 7 248 700**).

Glue the felt generously onto the support tube or
to the corresponding edge.

Important: The felt must be glued around the
edge!



Passenger side location 5.

Apply felt tape to location 5 on the support tube. (Felt tape part number **54 34 7 248 700**).

Glue the felt generously onto the support tube or to the corresponding edge.

Important: The felt must be glued around the edge!

6- Unplug the wiring connector from the ACSM (**A11*2B**).

Reference **Wiring Diagram 'Airbag firing circuits' SP0000061332** and **confirm the wire color and pin number BEFORE cutting these 4 wires at the ACSM connector.**

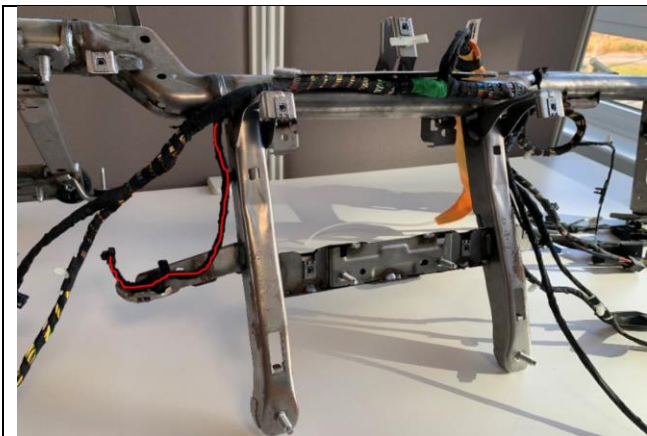
7- Cut the 4 wires for the knee air bag wiring harnesses near the ACSM connector and tie back the 4 cut wires with a cable strap.

- ACSM Pin 25 (**A11*2B**) goes to pin 1 of driver knee air bag (**B8*1B**).
- ACSM Pin 20 (**A11*2B**) goes to pin 2 of driver knee air bag (**B8*1B**).
- ACSM Pin 5 (**A11*2B**) goes to pin 1 of passenger knee air bag (**B77*1B**).
- ACSM Pin 10 (**A11*2B**) goes to pin 2 of passenger knee air bag (**B77*1B**).

Then pin 2 repair cables into the airbag control unit connector (**A11*2B**) exactly as the previous cables, route one to the knee airbag on the driver's side and the other to the knee air bag on the passenger's side.

8- Follow the original harness path.

- Install the repair harness so no chafing can occur



Driver's knee air bag harness route.

Wrap the last **34 centimeters** back towards the wiring harness with an abrasion-resistant fabric tape (part number **61 13 6 925 452**).



Passenger side air bag harness route.

Wrap the 3 harnesses shown in red on the passenger's side with an abrasion-resistant fabric tape (part number 61 13 6 925 452).

PARTS INFORMATION

When applicable, obtain and confirm the part numbers for your specific vehicle by entering the chassis number in either ETK or AIR which takes into account specific equipment and/or options.

Part Number	Description	Quantity
54 34 7 248 700	Felt strip, self-adhesive (130x40x3 mm)	Sublet as needed
61 13 6 925 452	Fabric adhesive tape abrasion resistant (25 mm)	As needed
61 12 5 A56 386	Knee air bag repair harness	2

CLAIM INFORMATION

Covered under the terms of the BMW New Vehicle Limited Warranty for Passenger Cars and Light Trucks.

Defect Code:	6111147900	Wiring harness, operating area / instrument panel incorrect connection /contact
---------------------	-------------------	--

Refer to AIR for the corresponding flat rate unit (FRU) allowance.

Labor Operation	Description	Labor Allowance
00 00 006	Performing vehicle test (with vehicle diagnosis system – checking faults) (Main work)	Refer to AIR
Or:		
00 00 556	Performing vehicle test (with vehicle diagnosis system – checking faults) (Plus work)	Refer to AIR
And:		
61 21 528	Support voltage of the vehicle electrical system / recharge vehicle electrical system battery	Refer to AIR

If you are using a Main labor code for another repair, use the Plus code labor operation 00 00 556 instead of 00 00 006, or exclude (including 61 21 528) when the Vehicle Test is included in another repair.

And, as necessary:

Labor Operation	Description	Labor Allowance
61 00 006*	Performing vehicle diagnosis – test module	Work time (WT)
Or		
00 58 500*	Diagnosis Worktime Flat Rate (See below)	2 FRU
And:		
72 12 504	Removing and installing/replacing airbag module for driver's knee protection	Refer to AIR
And/or:		
72 12 506	Removing and installing/replacing airbag module for passenger knee protection	Refer to AIR
And:		
51 16 665	Completely removing and installing center console	Refer to AIR
And, as necessary:		
61 99 000	Work time without specification / vehicle electrical system to perform the associated repair measure	WT

Work time labor operation codes 61 00 006, 00 58 500 and 61 99 000 are not considered a Main labor operations.

Additional Work/Repair Procedures (RO and Claim Comments Required)

When additional work procedures and parts are required to repair the issue described in this Service Information bulletin, claim these items together and the corresponding or substitute labor operations listed in AIR (including any additional diagnosis) under the under the Defect Code listed above.

*Based on which one applies to your center, please refer to **SI B01 01 20 or B01 07 20** for the applicable procedure for documenting, claiming, and explaining, on the RO and in the claim comments, your diagnosis work time (WT), job/repair work time (WT), and the vehicle repairs your center performed, unless otherwise required by State law.

And, as needed:

Sublet – Bulk Materials (RO and Claim Comments Required)

Sublet Code 4	See the sublet reimbursement calculations below	Reimbursement for the repair-related bulk materials (Do not use the BMW part numbers for claim submission)
--------------------------------	---	--

Sublet reimbursement calculation for claiming the applicable repair-related bulk materials (BMW part numbers) is at the dealer net price amount for the quantities used plus your center's handling.

Enter this material cost in sublet and itemize the amount on the repair order and in claim comment section.

FEEDBACK REGARDING THIS BULLETIN

Technical Feedback	To submit feedback for the technical topics of this bulletin: Submit your feedback in the rating box at the top of this bulletin
--------------------	--

Warranty Feedback	To submit feedback for the CLAIMS section of this bulletin: Submit an IDS ticket to the Warranty Department, or use the chat available in the Warranty Documentation Portal
Parts Feedback	To submit feedback for the PARTS section of this bulletin: Submit an IDS ticket to the Parts Department