



Service Bulletin

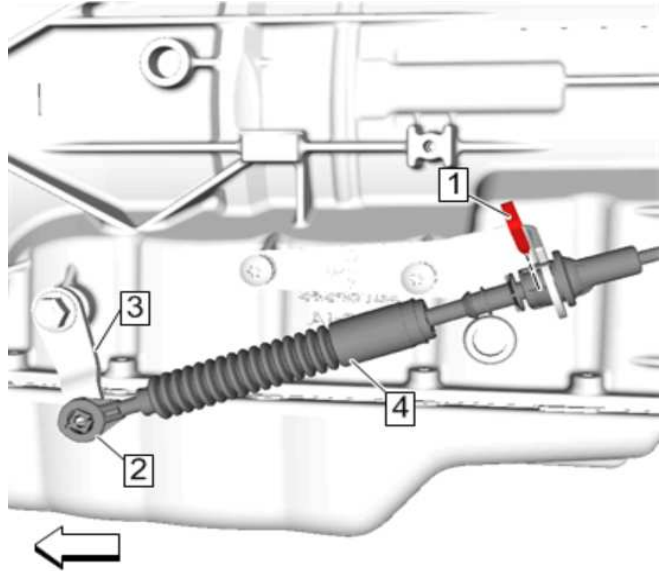
Bulletin No.: 21-NA-282

Date: January, 2022

TECHNICAL

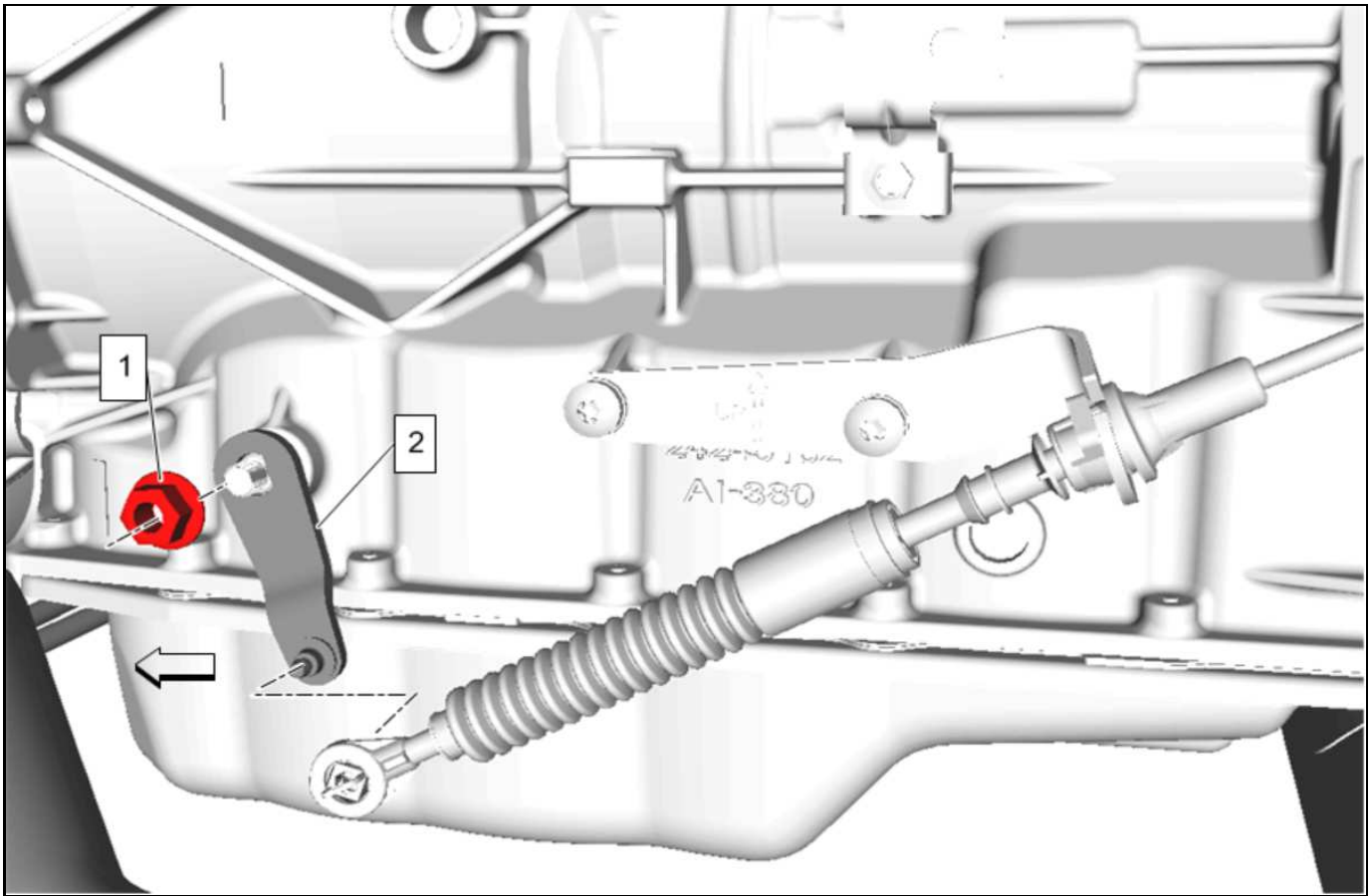
Subject: Transmission Will Not Go Into Gear or Shifter Will Not Put Transmission Into Gear

Brand:	Model:	Model Year:		VIN:		Engine:	Transmission:
		from	to	from	to		
Chevrolet	Express	2010	2020			L96	MYD
GMC	Savana						

Involved Region or Country	North America
Additional Options (RPOs)	YF1 (SALES PACKAGE-CUTAWAY UPFITTER)
Condition	Some customers may comment that the transmission will not go into gear or the shifter will not put transmission in gear.
Cause	 <p style="text-align: right;">4842577</p> <p>This condition may be caused by a worn shifter cable bushing (2) at the transmission shift lever (3).</p>
Correction	Replace the range selector lever cable, shifter lever and the shifter bracket.

Service Procedure

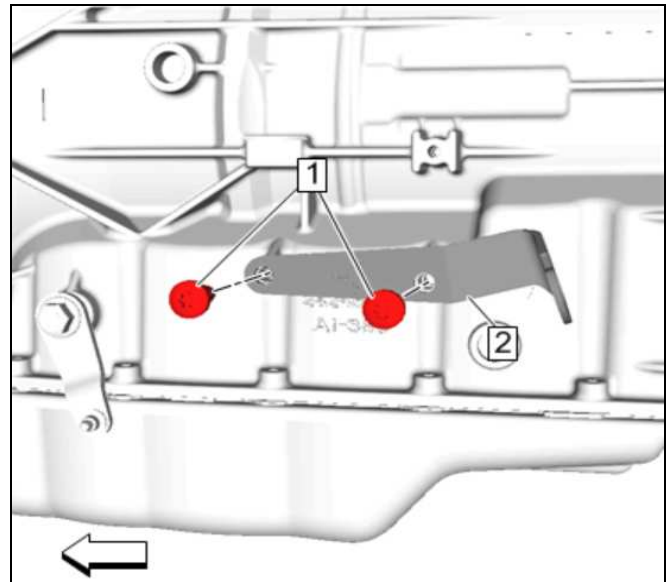
1. Remove the full range selector lever cable and discard. Refer to *Range Selector Lever Cable Replacement* in SI.



4842654

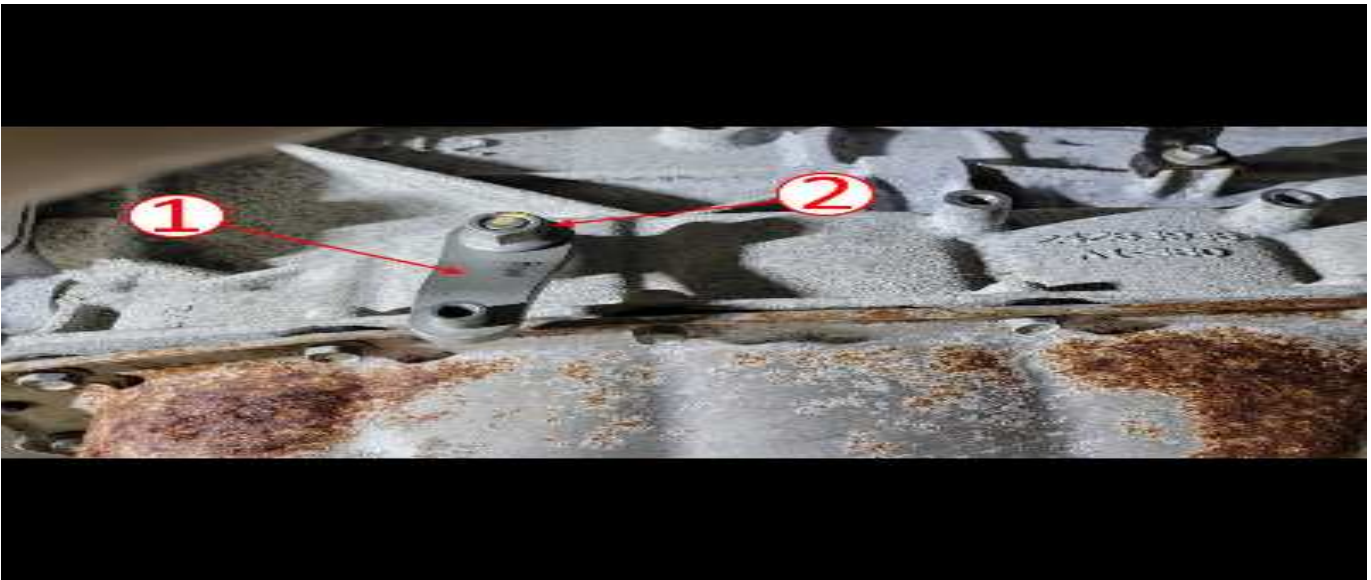
Note: Do Not discard the lever nut. It can be reused for this application.

2. Remove the nut (1) that secures the shifter lever (2) to the transmission.
3. Remove the shifter lever (2) and discard.



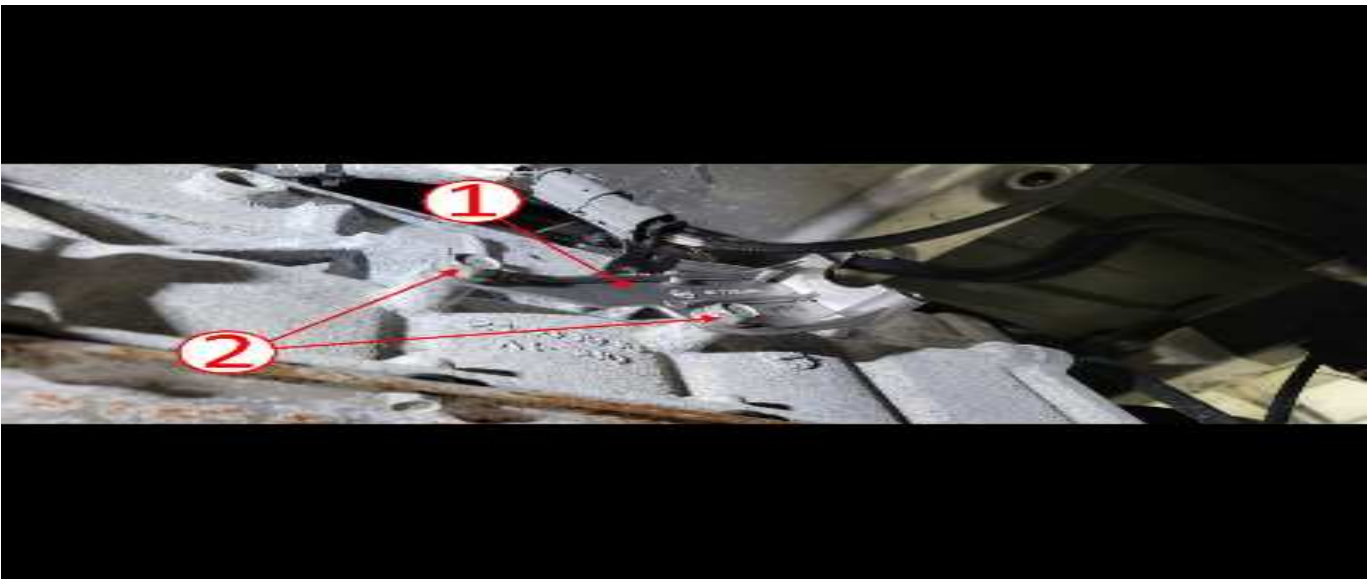
4842586

4. Remove the bolts (1) and shifter cable bracket (2) and discard.



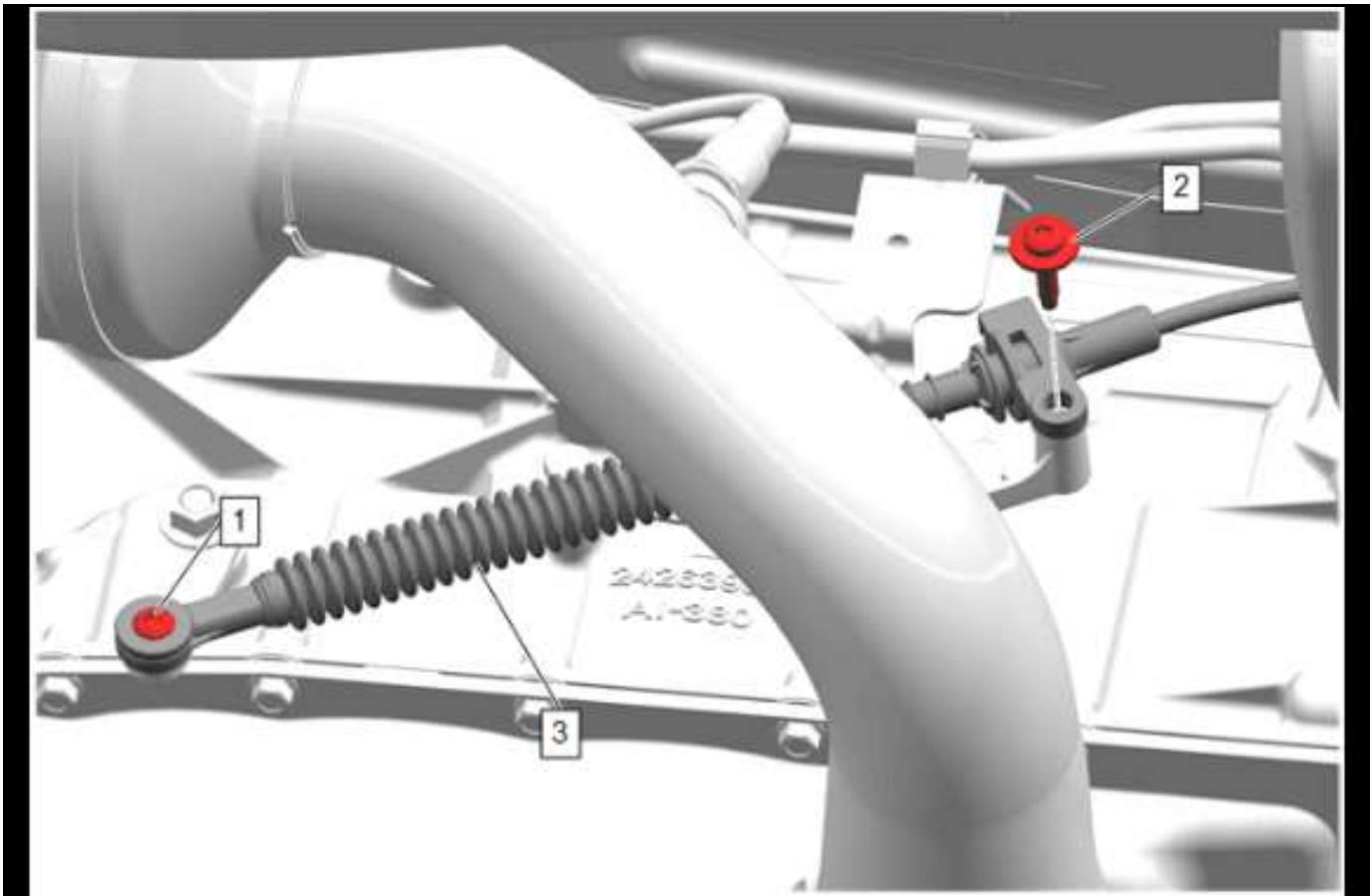
5925573

5. Install the new shifter lever (1).
⇒ Torque nut (2) to 30 N•m (22 lb ft).



5925572

6. Install the new shifter cable bracket (1).
⇒ Torque the bolts (2) to 22 N•m (16 lb ft).



5923640

7. Install shifter cable (3) to shift bracket.
⇒ Torque the clamp bolt (2) to 9 N•m (80 lb in).
8. Install shifter cable bolt to lever.
⇒ Torque the clamp bolt (1) to 9 N•m (80 lb in).
9. Install the range selector lever cable. Refer to *Range Selector Lever Cable Replacement* in SI.
10. Refer to *Range Selector Lever Cable Adjustment* in SI.

Causal Part	Description	Part Number	Qty
N/A	BRKT, A/TRNS RANGE	84526297	1
N/A	BOLT, A/TRNS RANGE SEL LVR CBL BRKT	11546866	2
N/A	LVR, A/TRNS RANGE SEL	23387811	1
N/A	BOLT, A/TRNS RANGE SEL LVR CBL TO A/TRNS CNTL (LOWER)	11570775	1

Parts Information

Causal Part	Description	Part Number	Qty
X	CABLE, A/TRNS RANGE SEL LVL (LOWER)	84961006	1
X	CABLE, A/TRNS RANGE SEL LVL (UPPER)	23166827	1

Warranty Information

For vehicles repaired under the Bumper-to-Bumper coverage (Canada Base Warranty coverage), use the following labor operation. Reference the Applicable Warranties section of Investigate Vehicle History (IVH) for coverage information.

Labor Operation	Description	Labor Time
8486098*	Range Selector Lever Cable, Bracket and Lever Replacement	1.4 hr

*This is a unique Labor Operation for Bulletin use only.

Version	1
Modified	Released January 21, 2022

GM bulletins are intended for use by professional technicians, NOT a "do-it-yourselfer". They are written to inform these technicians of conditions that may occur on some vehicles, or to provide information that could assist in the proper service of a vehicle. Properly trained technicians have the equipment, tools, safety instructions, and know-how to do a job properly and safely. If a condition is described, **DO NOT** assume that the bulletin applies to your vehicle, or that your vehicle will have that condition. See your GM dealer for information on whether your vehicle may benefit from the information.



WE SUPPORT VOLUNTARY
TECHNICIAN
CERTIFICATION