



Service Bulletin

Bulletin No.: 21-NA-095

Date: February, 2022

TECHNICAL

Subject: Malfunction Indicator Lamp (MIL) Illuminated - DTC P1488 or P24DA Set

| Brand: | Model: | Model Year: | | VIN: | | Engine: | Transmission: |
|-----------|---|-------------|------|------|----|---------|---------------|
| | | from | to | from | to | | |
| Cadillac | Escalade Models | 2021 | 2022 | | | | |
| Chevrolet | Silverado 1500 | 2020 | 2021 | | | LM2 | |
| | Silverado 1500 - 2WD (LTD, RPO J21, 12th VIN Digit = 4 or less) | 2022 | 2022 | | | | |
| | Silverado 1500 - 2WD (RPO J22, 12th VIN Digit = 5 or greater) | | | | | | |
| | Suburban | 2021 | | | | | |
| | Tahoe | | | | | | |
| GMC | Sierra 1500 | 2020 | 2021 | | | | |
| | Sierra 1500 - 2WD (LTD, RPO J21, 12th VIN Digit = 4 or less) | 2022 | 2022 | | | | |
| | Sierra 1500 - 2WD (RPO J22, 12th VIN Digit = 5 or greater) | | | | | | |
| | Yukon Models | 2021 | | | | | |

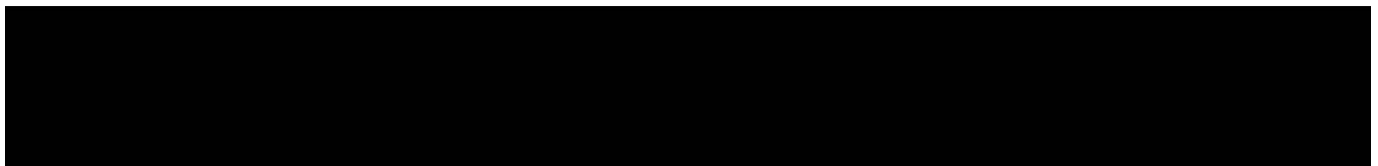
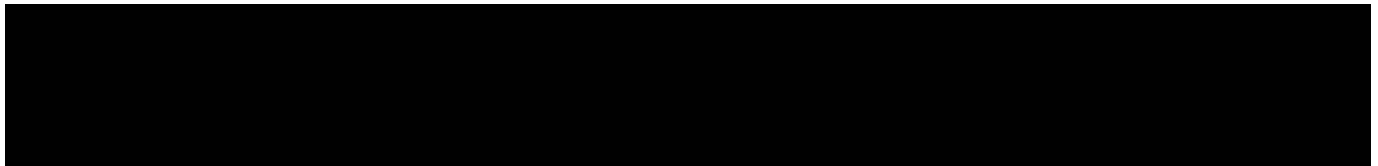
| | |
|-----------------------------------|---|
| Involved Region or Country | North America, Uzbekistan, Russia, Middle East, Chile (West), Colombia (West), Ecuador (West), Paraguay (West), Peru (West), Venezuela (West), Japan, Cadillac Korea (South Korea), Thailand (ASEAN), Australia/New Zealand |
| Condition | Some customers may comment that the MIL is illuminated. Some technicians may find DTC P1488 or P24DA (Particulate Matter Sensor Protection Tube Performance) set in the Engine Control Module (ECM). |
| Cause | This condition can be caused by any exhaust leak, but is primarily caused by an exhaust leak between the NOx catalytic converter and the rear exhaust pipe. |
| Correction | Refer to the Service Procedure. |

Service Procedure



5795155

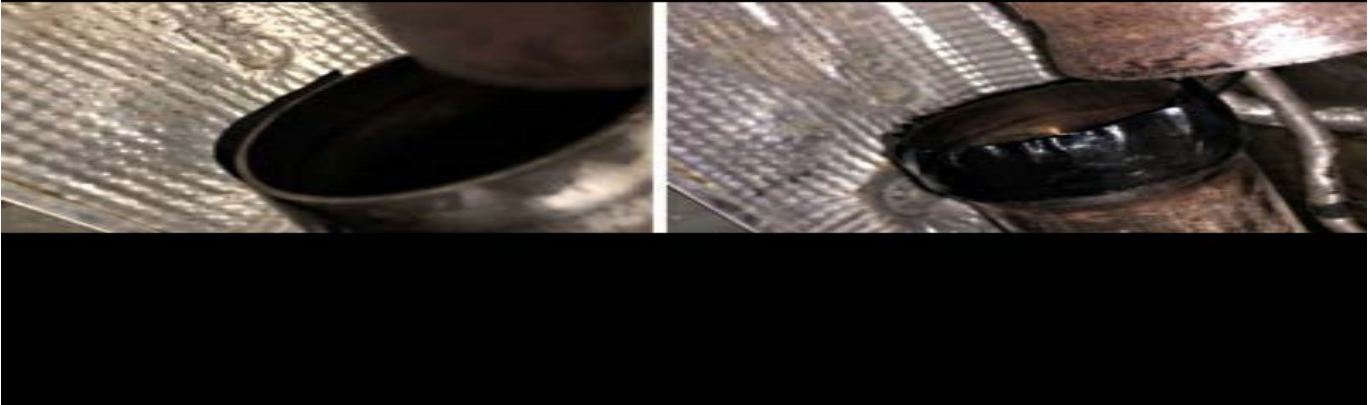
1. Separate the rear exhaust pipe from the NOx catalytic converter and discard clamp.
2. Utilizing an abrasive cloth or equivalent, clean the outside of the NOx catalytic converter pipe and the inside and outside of the rear exhaust pipe.



5811457

Note: It is extremely important that the pipes are clean and free of rust or the tape will not stick.

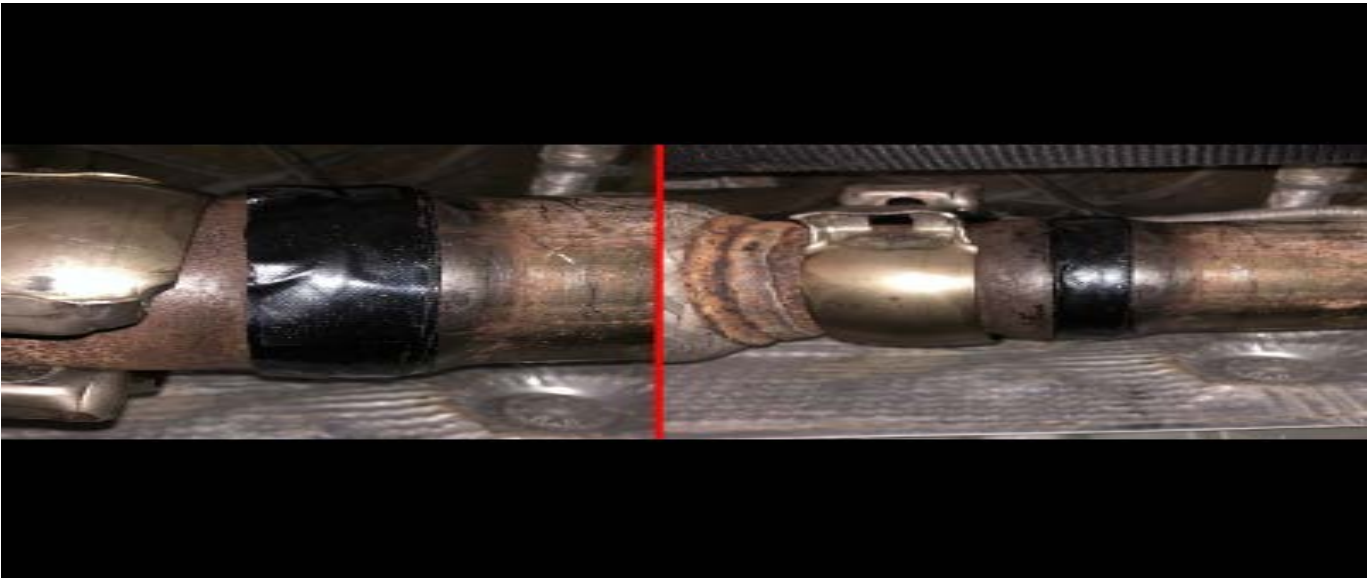
3. Utilizing Tiger/Spider Patch Tape or equivalent, fold the tape in half and cut down the middle the entire length.



5795164

Note: Apply the patch to the edge of the pipe.

4. Wrap the joint end of the cleaned NOx catalytic converter pipe approximately 1.5 Times with the tape and cut off excess.
5. Reconnect the rear exhaust pipe to the NOx catalytic converter and verify proper alignment.
6. If the rear exhaust pipe does not line up with the end of the NOx catalytic converter, it may be necessary to support the rear exhaust pipe and disconnect the exhaust hangers so that the two pipes line up. The key is to draw both pipes together prior to taping and clamping the joint.



5795191

Important: It is very important that the rear exhaust pipe is fully seated in the NOx catalytic converter cone prior to taping the joint.

Note: Tape should be placed evenly between the rear exhaust pipe and the NOx catalytic converter..

7. Once joined, wrap the joint 1.5 Times with Tiger/ Spider Patch Tape and cut off excess.



5795194

8. Install the new clamp.
⇒ Tighten clamp to 28 N•m (21 lb ft).
9. If any of the exhaust hangers were disconnected in step 6, re-secure them.
10. Drive the vehicle approximately 20 minutes to allow the Tiger/Spider Patch to heat up and seal.
11. After driving, allow 30 minutes for the tape to cool and fully cure.



5795157

Parts Information

| Causal Part | Description | Part Number | Qty | Material Allowance |
|-------------|---|-------------|-----|--------------------|
| N/A | Versachem, Tiger Patch Tape* (U.S. only) | 10270 | 1 | \$6.00 |
| N/A | Versachem, Spider Patch Tape* (Canada only) | 90352 | 1 | \$11.00 |
| N/A | CLAMP, EX | 84283544 | 1 | - |

*There is enough material to repair additional vehicles. Store the remaining material for future use.

Warranty Information

For vehicles repaired under the Emission coverage, use the following labor operation. Reference the Applicable Warranties section of Investigate Vehicle History (IVH) for coverage information.

| Labor Operation | Description | Labor Time |
|-----------------|---|------------|
| 4087988* | Diagnostic and Smoke Test | 0.5 hr |
| Add | Apply Exhaust Patch Tape to UFSCR/Tailpipe Flange | 1.0 hr |

*This is a unique Labor Operation for Bulletin use only.

| Version | |
|-----------------|--|
| | 6 |
| Modified | <p>Released April 22, 2021</p> <p>Revised May 03, 2021 - Changed P42DA to P24DA and Changed Region Information to North America.</p> <p>Revised June 04, 2021 - Add Spider Patch information to Service Procedure and Parts information section and Removed the Information to Allow the Tape to Overhang the Pipe to Apply Tape to the Edge of Pipe.</p> <p>Revised September 17, 2021 - Updated the Cause and Correction sections.</p> <p>Revised January 18, 2022 - Add 2022 to Model Year and Added Additional Regions and Countries.</p> <p>Revised January 28, 2022- Update Service Procedure section.</p> |

