

SS 3102 FTL-2022 P4 with 100/120/130 Gallons Fuel Tanks interference/rubbing with fairing bracket.

Applicable Vehicles

Applies to all New Cascadia (P4) vehicles built with 100/120/130 Gallons Fuel Tanks.

Symptoms

Fuel Tanks Leaking / Damaged rubbing with Fairing Bracket

Issue

Fuel Tank installation may have reduced clearance with Fairing Brackets (LHS), mainly due to tolerance stacking. This reduced clearance causes interference/rubbing issues of Fuel Tanks with Fairing Brackets at low mileages that may cause Fuel leaks and require Fuel Tank replacement.

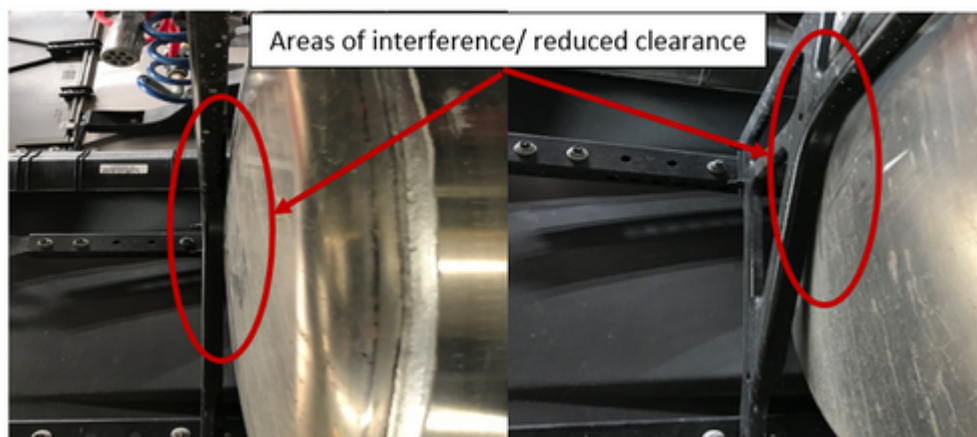


Figure 1: Fuel Tank - Fairing Bracket Interference/Rubbing issues.

Solution

The Fairing Bracket installation needs to be modified to increase the clearance/eliminate the interference with the Fuel Tank in the LHS Fairing Bracket installation. Follow the next steps to increase clearance/eliminate interference:

- Inspect and identify the areas of reduced clearance/interference.

a) To increase clearance at the Frame mounted Fairing Bracket area shown in Figure2:

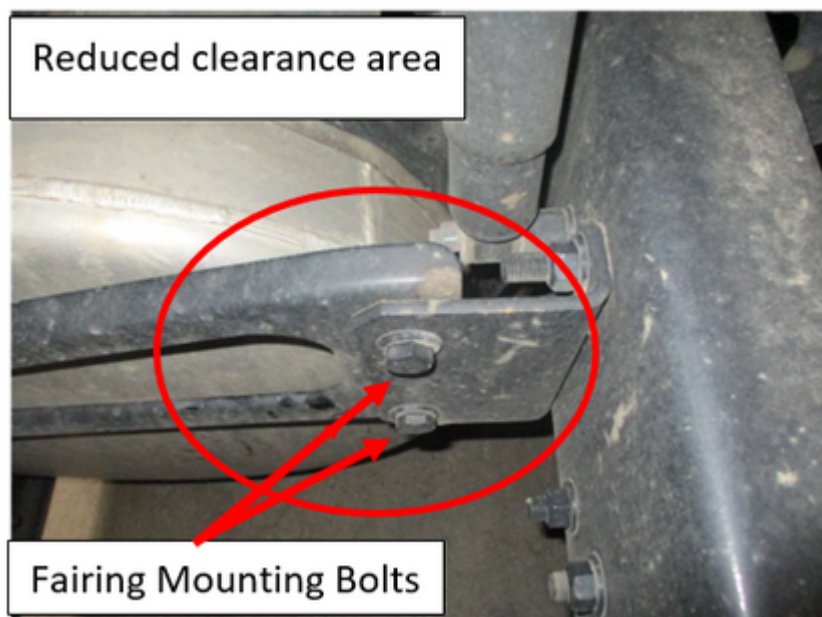


Figure 2: Reduced clearance at the Fairing Frame mounting Bracket area.

i. Remove Fairing Bracket mounting bolts and install Fairing Bracket as shown in Figure 3.

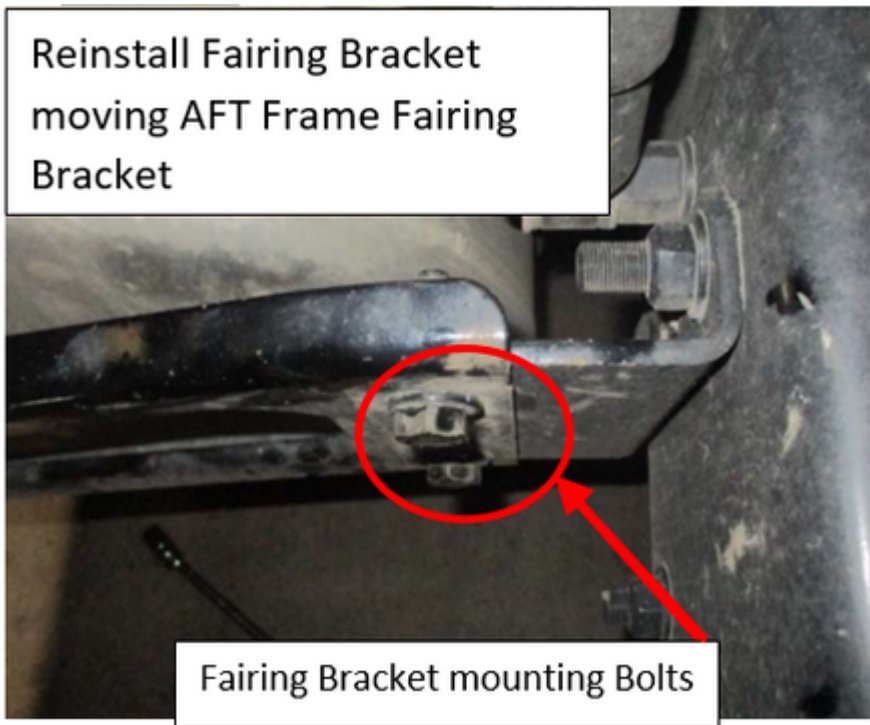


Figure 3: Fairing Bracket moved AFT the Fairing Frame Bracket.

ii. Reinstall Fairing Bracket as shown in Figure 3 and torque mounting bolts to $235 (+/- 24) \text{N*m}$ ($174 (+/- 18) \text{Lbf*Ft}$).

b) To increase clearance/interference at the Fairing Rail Bracket area, shown in Figure 4:

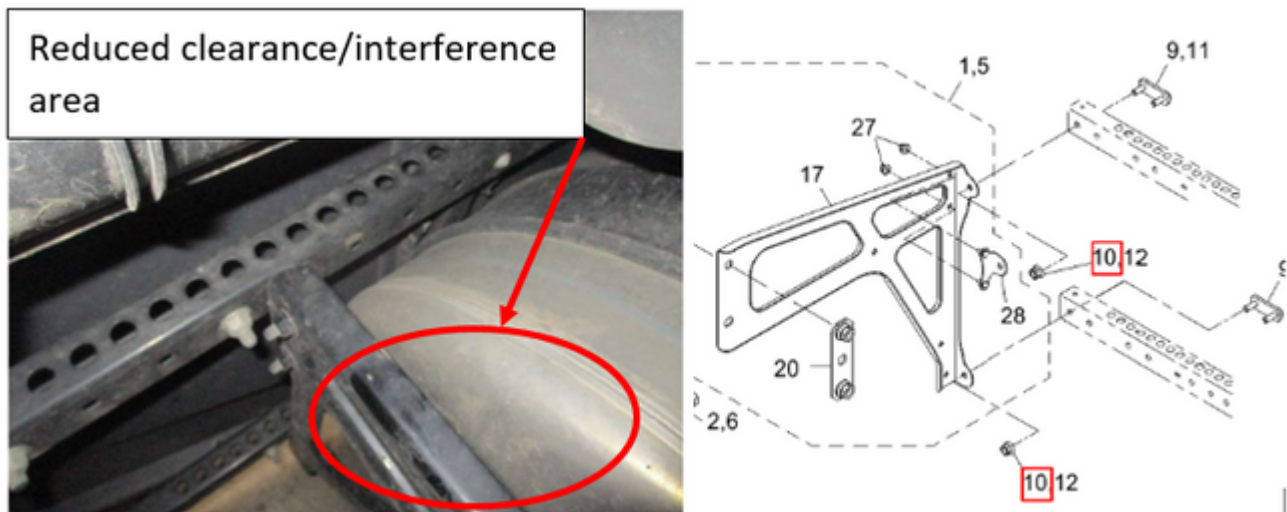


Figure 4. Reduced Clearance/Interference at the Fairing Rail Bracket mounting area.

i. Remove Item 10 lower and upper mounting Nuts, and position the Fairing Bracket AFT in the Fairing Rail as shown in Figure 5. Reinstall Nuts, torque Nuts to 47 (+/- 5) N*m (35 (+/-4) Lb*Ft) and proceed to next step.

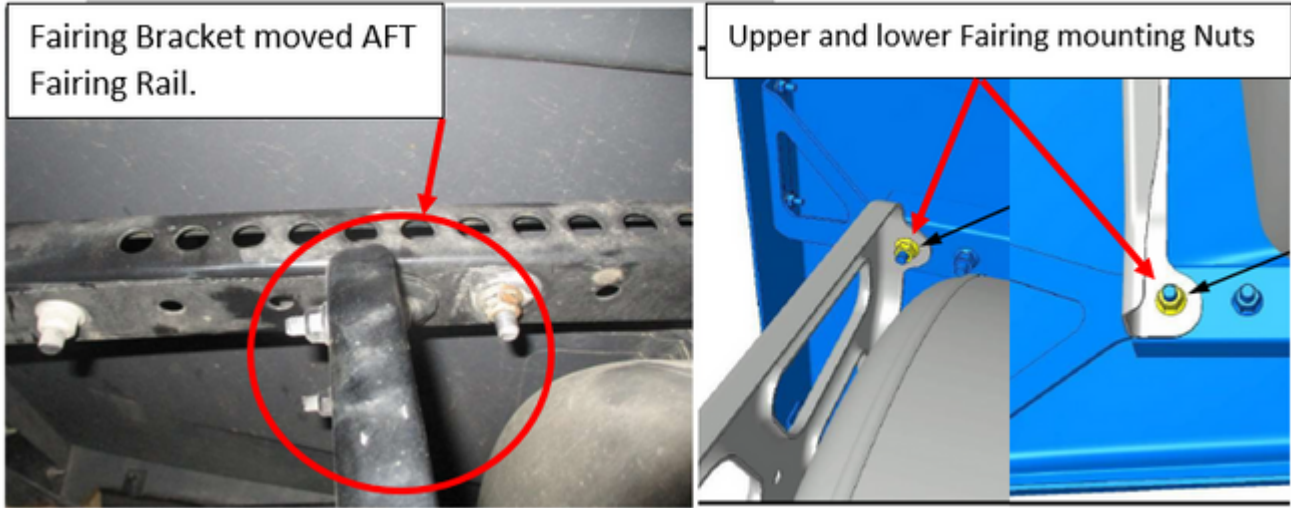


Figure 5: Relocation of Fairing Bracket AFT in Fairing Rail.

ii. Remove upper and lower Nuts Item10 from Fairing Rail and reinstall Fairing Bracket in its new position as shown in Figure 5, torque Nuts to 47 (+/- 5) N*m (35 (+/-4) Lb*Ft).

iii. Verify clearance between Fairing Bracket and Fuel Tank has been increased at both sides of the Fairing Bracket mounting.

Labels :

Fuel System Diesel

New Cascadia

Add tags



2 Kudos

Comment