

MAS002972 (MTB 22-06)

Technical Information

From: After Sales - TSO

To: Maserati Network

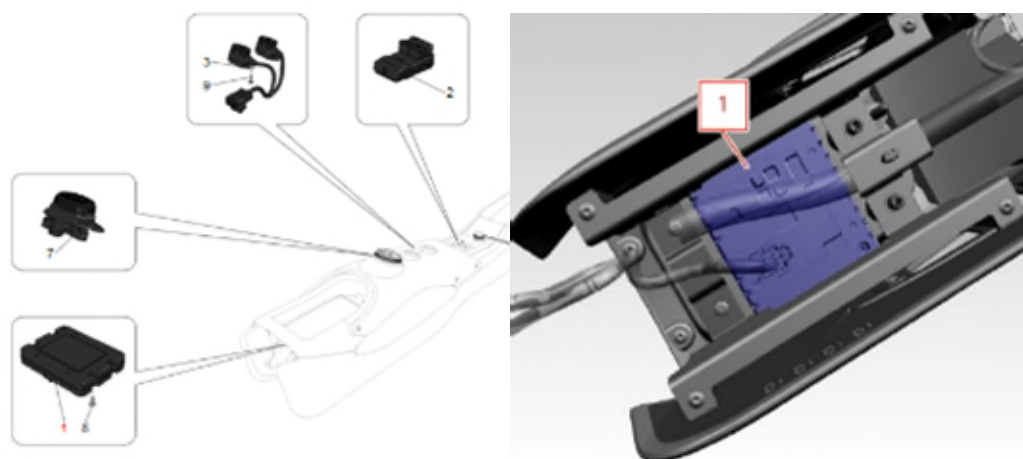


Wireless charger malfunction

DATE: February 18, 2022

MODELS: M240

SECTION: 08.51 - 1 CENTRE CONSOLE DEVICES component #1



ISSUE: Wireless charger malfunction

CAUSE: Under investigation

ACTION: If a customer complains about the problem covered by this technical information, or it is found during the checks provided in PDI; it is requested not to perform any operation and to open a BOL as a support request in order to receive instructions on how to proceed.

If you have any questions, contact your Regional AfterSales Manager or the Technical Support Helpdesk.