



# Service Bulletin

Bulletin No.: 22-NA-005

Date: January, 2022

## INFORMATION

**Subject:** Information on Opening / Closure Instructions for DDR (Damaged, Defective, Recalled) High Voltage Battery Dunnage / Container

Brand:	Model:	Model Year:		VIN:		Engine:	Transmission:
		from	to	from	to		
Brightdrop	EV600	2022	2022				
GMC	HUMMER EV						

Involved Region or Country	
Additional Options (RPOs)	
<b>Information</b>	<p>Loose container components to support return of DDR battery:</p> <ul style="list-style-type: none"> <li>• 20 ft. X 13 ft. X 4 mm (6m X 4m X 4mm) poly liner</li> <li>• 57 in. X 160 in. (145 cm X 406 cm) absorbent liners</li> <li>• M-16-2 X 100 mm bolts with metal and rubber washers to secure battery to base</li> </ul> <p>The high voltage battery pack is regulated under dangerous goods transportation laws. As the shipper of record, dealers are responsible for compliance with all applicable international, federal, state, provincial, or local dangerous goods transportation laws. This includes, but is not limited to, proper labeling, marking, completion of shipping papers, and packaging. Failure to comply with federal dangerous goods transportation laws may result in a violation of the U.S. Hazardous Materials Transportation Act, as amended, and its implementing regulations issued by the U.S. DOT at Title 49, Volumes 2-3, of the CFR and could subject you to fines of up to \$84,425 for each violation, except the maximum fine is \$196,992 if the violation results in death, serious illness, or severe injury to any person or substantial destruction of property.</p> <p><b>Important:</b> Failure to follow these closure instructions may result in a violation of the U.S. Hazardous Materials Transportation Act and could subject you to fines as previously referenced.</p> <p>The packaging referenced has passed the standards of the DOT'S TITLE 49 CFR; Performance Oriented Packaging Standards, Section 178. This package is also certified under ADR, IMDG, ICAO/IATA Regulations and the UN Recommendations on the Transport of Dangerous Goods. It is the responsibility of the end user to determine authorization for use under these regulations. The use of other packaging methods or components other than those documented in this report may render this certification invalid.</p> <p>These containers are intended/rated for reuse and must be handled with care.</p>

## Return Procedure

### Opening / Closure Instructions for BET (Hummer) Damaged, Defective or Recalled (DDR) Batteries

**Important:** Refer to *Hybrid/Electric Vehicle Battery Pack Replacement and Shipping Preparation* in SI for instruction on proper equipment use.



5951132



5951134



5951143

- 1. Inspect outside of container (base and top) to ensure it is damage free.



5951161



5951171

2. Remove sixteen (16) M-16 hex head X 100 mm (4 in.) lag screws and washers from crate (circled in green in two graphics above). Five (5) bolts / washers on each length dimension and three (3) bolts washers along each width dimension (circled in green in graphics above).

**DO NOT REMOVE ANY ADDITIONAL BOLTS.**  
Place in a safe location to close container in future step



5951188

3. Connect the lifting assist, EL-53080 (Battery Lifting System) to the fork truck and connect the 4 straps to the D rings recessed in the crate top, refer to *Hybrid/Electric Vehicle Battery Pack Replacement and Shipping Preparation* in SI.



5951279

- 4. Slowly lift the crate top off the base and set it down in a safe location.



5951283

5. Inspect inside the lid for damage. If container is undamaged, proceed to step 6. Damaged containers must not be loaded with hazardous materials.

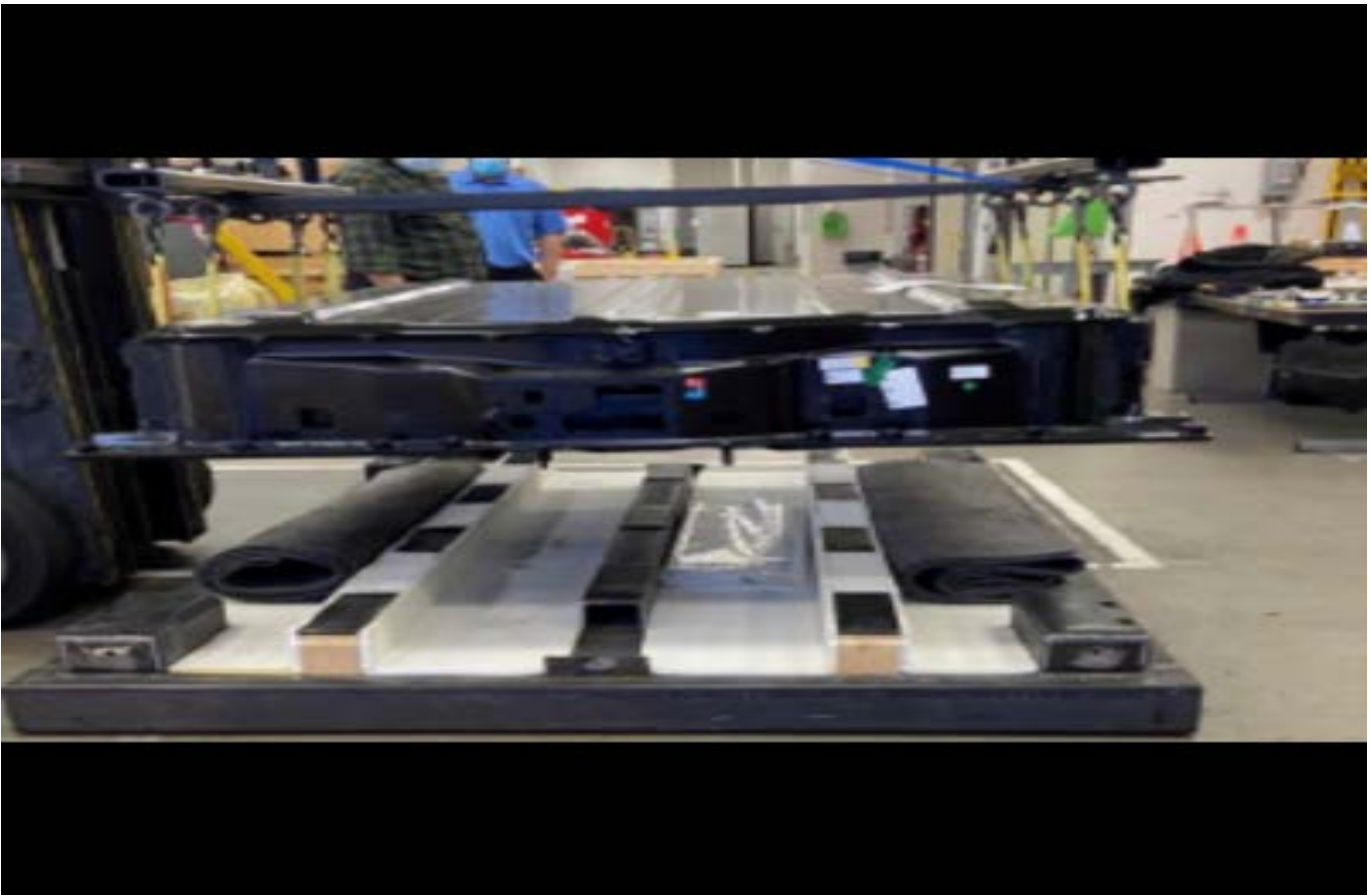


5951285

6. Carefully set the crate top to the side and disconnect the straps from the D rings.



5951288

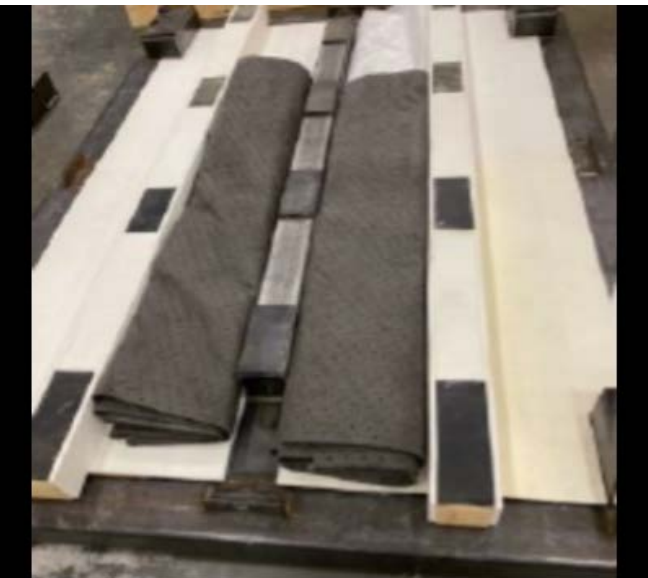


7. Remove the 4 - M16 bolts (bolts should also include a metal and rubber washer) securing the battery to the crate base. Connect the BET lift assist, EL53080 and EL-53097, eye bolts refer to *Hybrid/Electric Vehicle Battery Pack Replacement and Shipping Preparation* in SI. .

**Note:** ensure all electrical connector and cooling system dust caps have been transferred, refer to *Hybrid/Electric Vehicle Battery Pack Replacement and Shipping Preparation* in SI.

8. Remove the two (2) 57 in. x 160 in. absorbent blankets and one (1) 13 ft. x 20 ft. poly liner. Liner and blankets will be used to wrap damage battery starting in step 10.
9. Inspect crate base and insure it is damage free and all foam and rubber materials are in place and free of tears. If no damage, proceed to step 10.

5951289

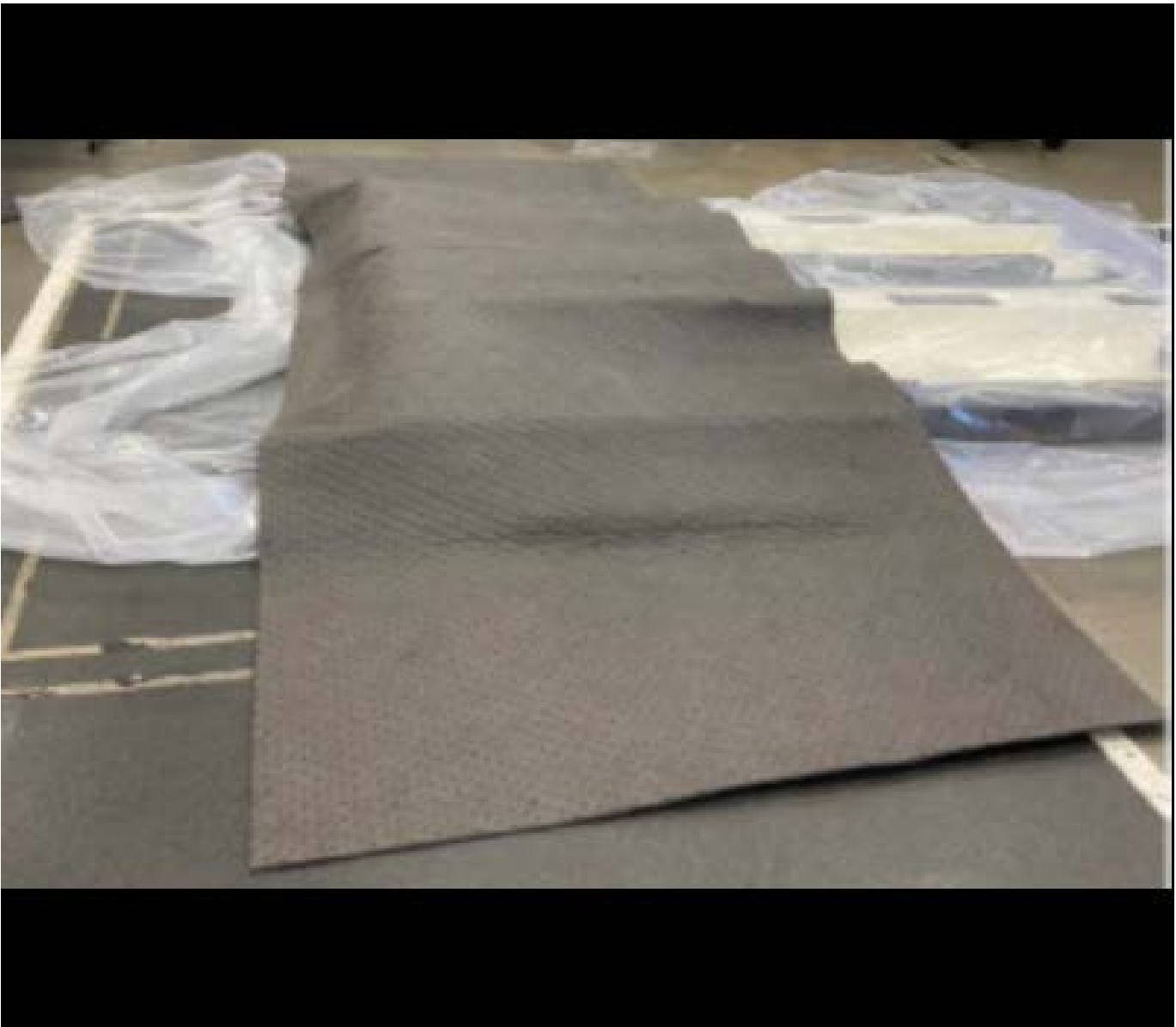


5951290



10. Open 20 ft x 13 ft poly liner and center it over crate base as shown in picture above.

5951291



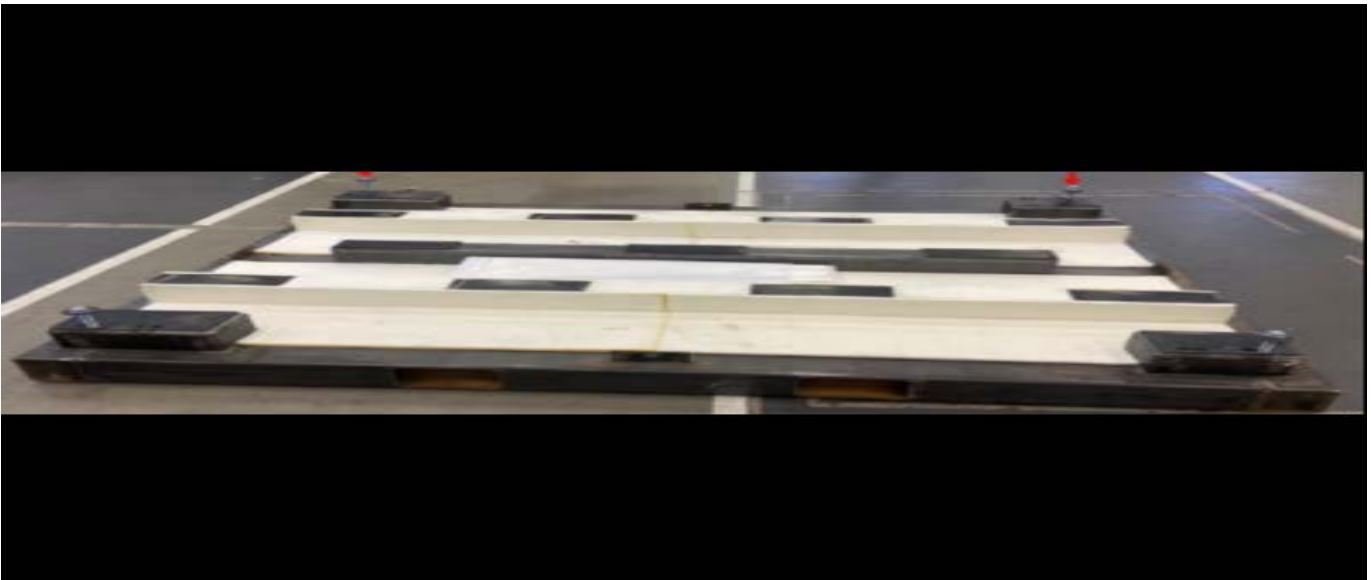
5951293

11. Using first absorbent blanket, lay across the width (67 in. (170 cm) dimension) of crate base as show. Please ensure the edge of the blanket overhangs the end of the crate base so as the edge of the blanket just touches the floor.

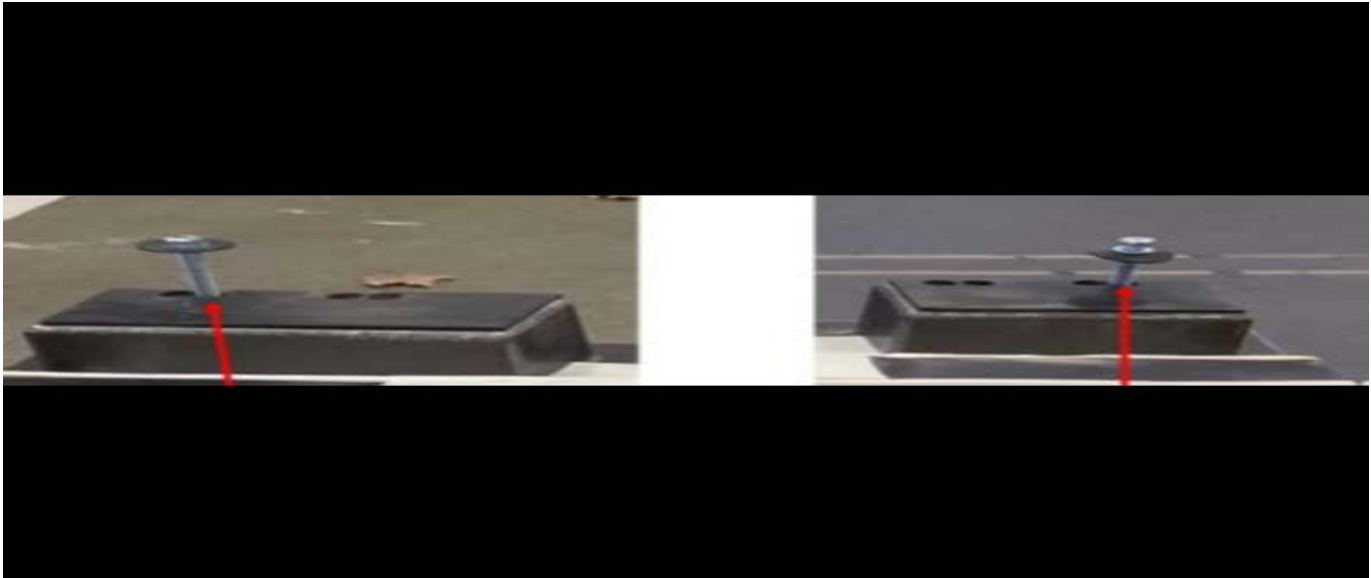


5951295

12. Using the second absorbent blanket, repeat along other end of base. Please ensure that there is at least one inch of overlap of the two blankets in the center.



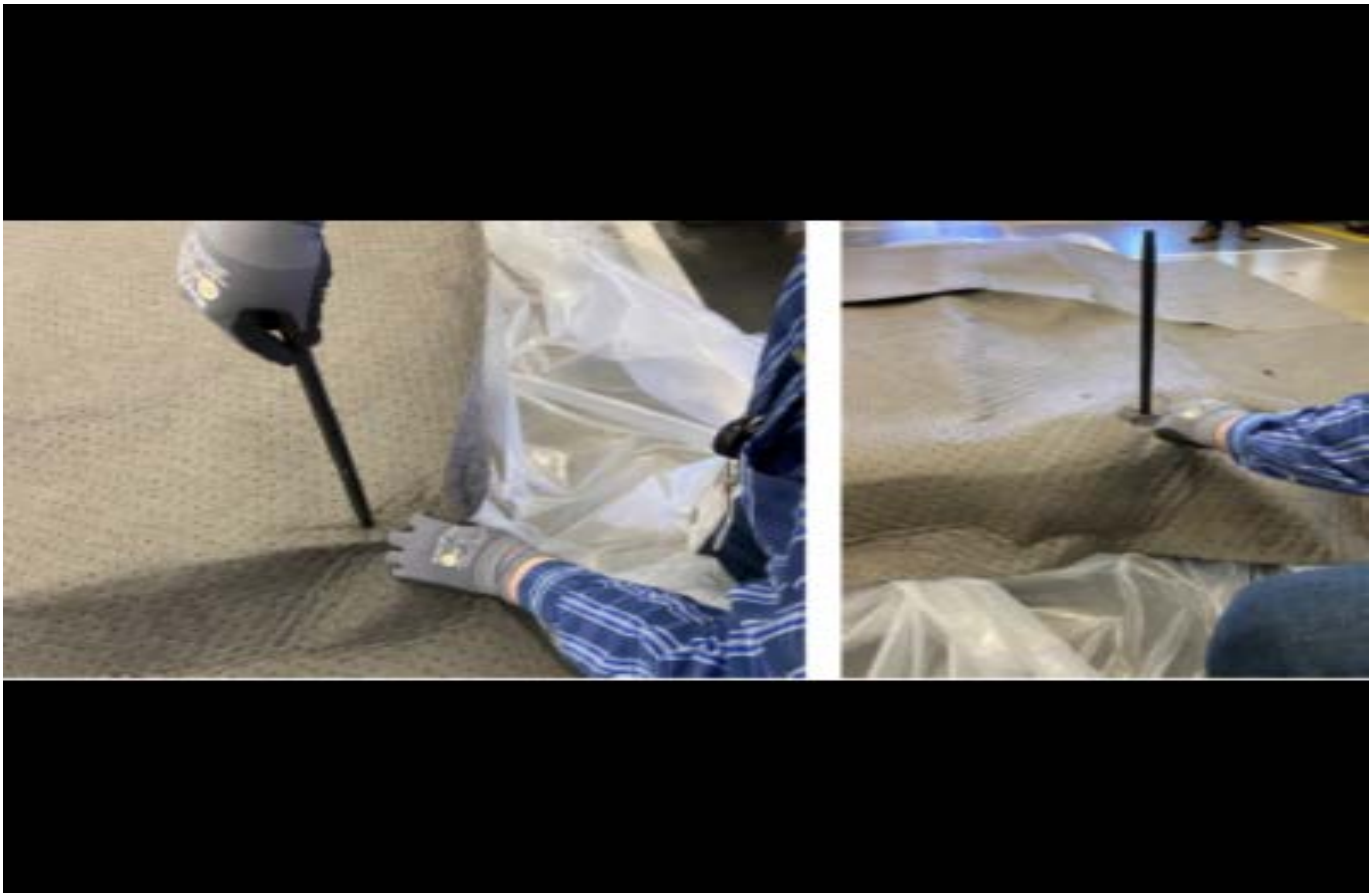
5951296



5951297

**Note:** bolt placement locations for LWB battery are shown without poly liner or absorbent blankets in place.

- 13. The above picture shows the bolt hole locations that should be utilized in the next steps.



5951301

- 14. Utilizing one of the EL-53152 HV Battery Alignment Pins find the appropriate hole in the base (previous picture) and set the top or narrow end of the pin on the blanket and liner over the correct base detail hole. Using light/medium force, with a rubber mallet strike the pin and puncture through the

absorbent and poly liners. Rotate the alignment pin and align pin threads with proper bolt hole threads and hand tighten into place.



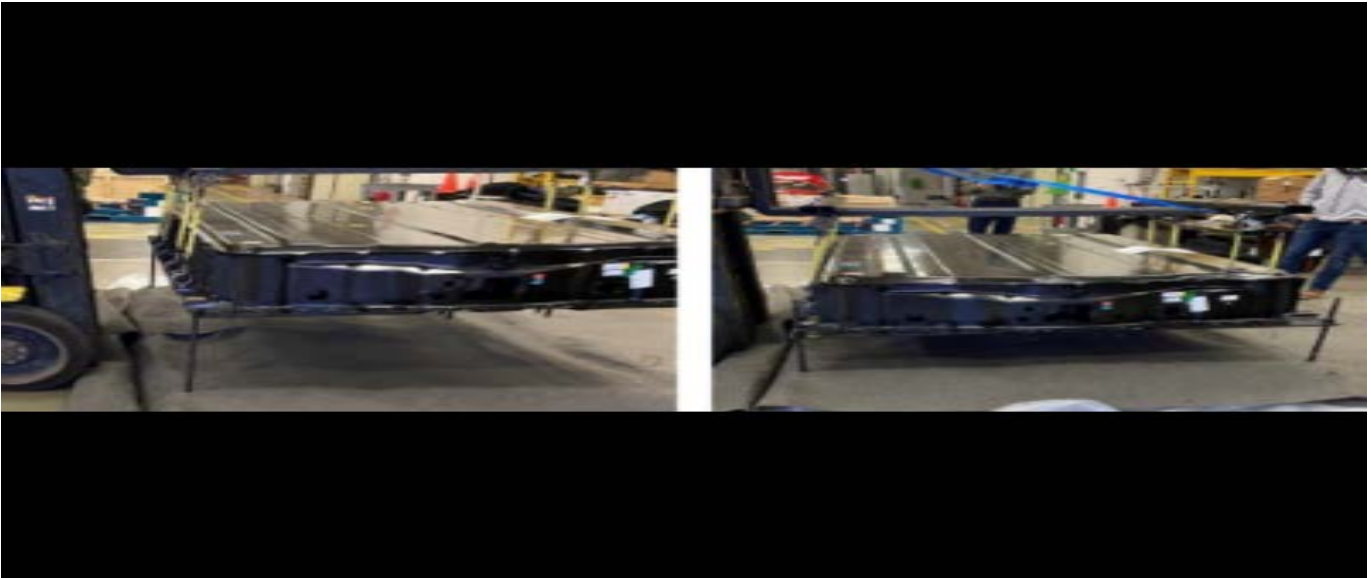
15. Repeat this process for the remaining three bolt hole location.

5951304



5951305

16. Connect battery to lift assist EL-53080 using eye bolts EL-53097 refer to *Hybrid/Electric Vehicle Battery Pack Replacement and Shipping Preparation* in SI.



5951306

17. Carefully lower battery over alignment pins. Once the battery is aligned with the four pins, refer to *Hybrid/Electric Vehicle Battery Pack Replacement and Shipping Preparation* in SI.



5951307

18. Once the battery is lowered onto base release tension from lift assist. Remove first alignment pin and replace with a M16 bolt with metal and rubber washers. Ensure rubber washer, not metal washer, is contacting battery. **Start bolt by hand to ensure threads are not crossed. Do not tighten down at this time.**



19. Repeat step 18 for remaining three (3) alignment pins and bolts. Once all four bolts are in place, disconnect lift assist and **tighten all four bolt to 25 ft lb. of torque.**

5951309



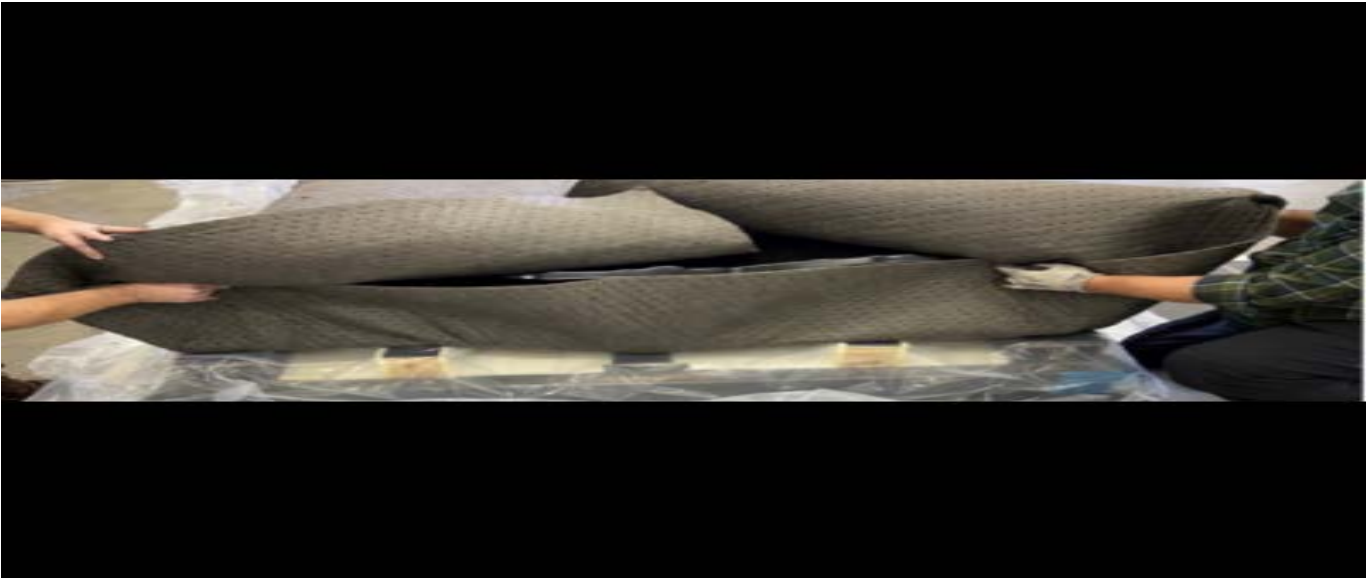
20. Wrap battery with first absorbent pads as shown above.

5951311



21. Repeat with second absorbent pad.

5951313



5951315



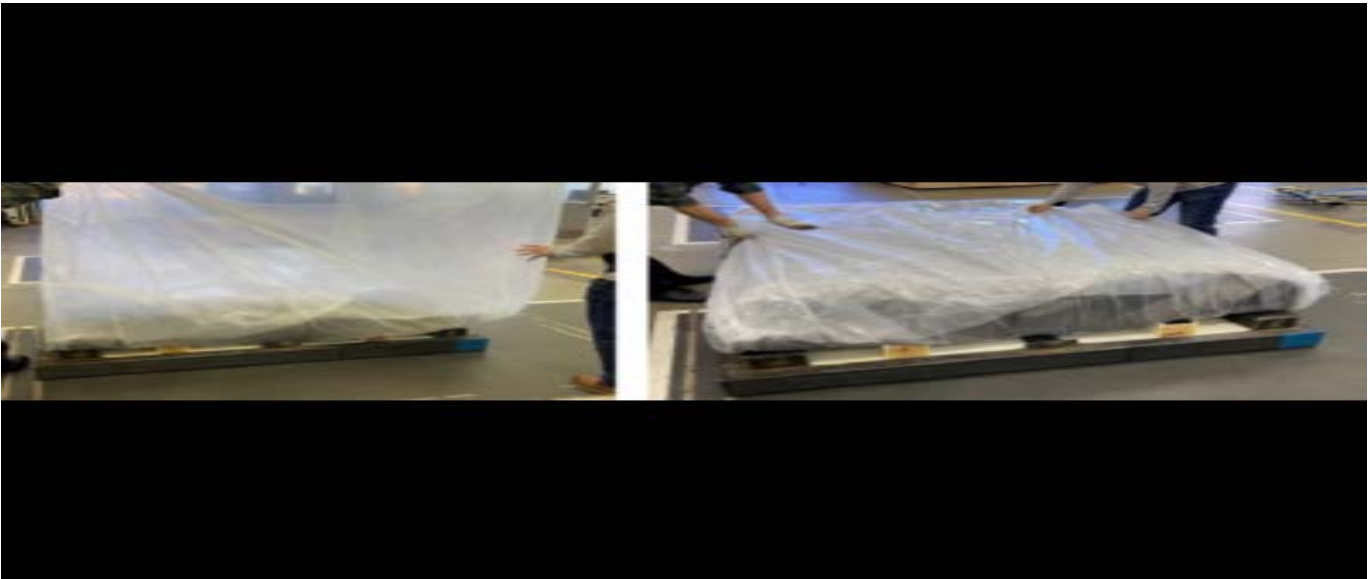
5951316

22. Fold end of absorbent pads.



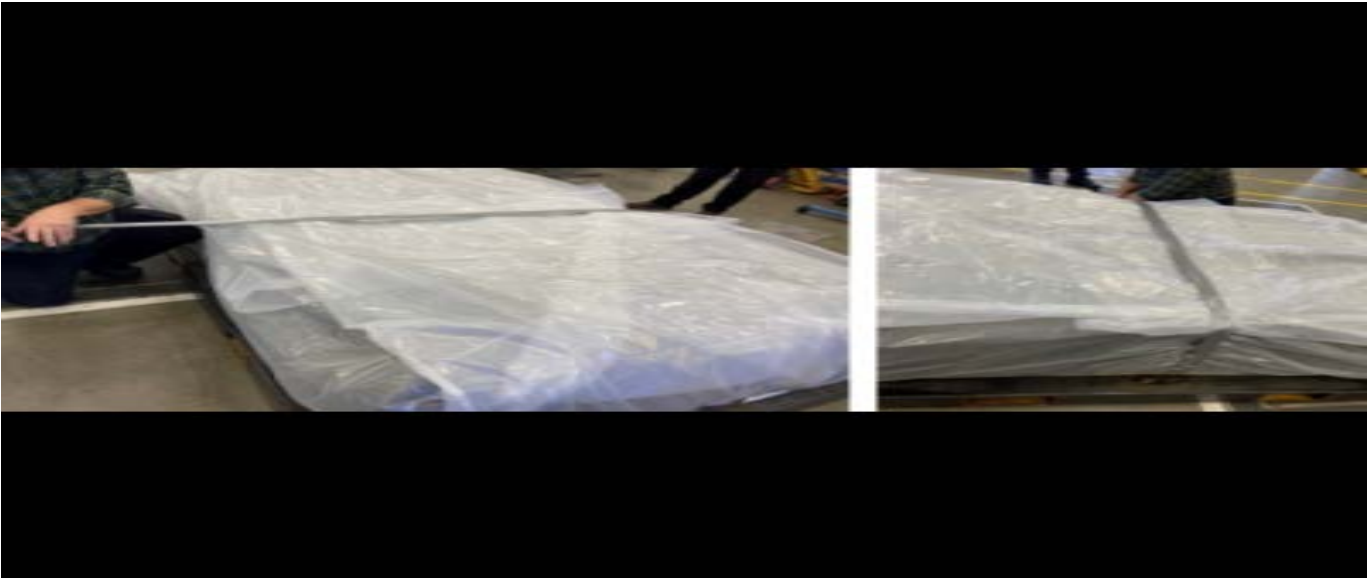
5951317

- 23. With two people, each grab a long end of the poly liner and fold over width of battery. Then repeat for opposite side.



5951318

- 24. Fold narrow end of poly liner along the length of the battery. Then repeat for opposite end.



5951319

- 25. Use duct tape to seal poly liner along center line of battery. Tape should start at base of battery, run over top of battery and secure along underside of battery on opposite side of crate.



5951322

- 26. Repeat on each end of battery as well. Please note these steps are required to prevent the liner material from sliding down and covering the lid bolt holes while lowering the lid onto the base.



5951340

27. On each corner of the wrapped battery run a 24"-36" piece of duct tape horizontally as shown. This 1) reduces the risk of tears in the liner when closing the crate and 2) reduce risk of excess material from blocking bolt holes when lowering crate lid into position.



28. Completed wrapped battery.

5951344



5951346

29. Using lift assist connected to fork truck forks, connect harness to crate lid and align lid over crate base. Using lift assist connected to fork truck forks, connect harness to crate lid and align lid over crate base. Refer to *Hybrid/Electric Vehicle Battery Pack Replacement and Shipping Preparation* in SI. **Ensure colored stripe on top aligns with colored corner of base. If they do not, rotate lid 180 degrees. Ensure colored stripe on top aligns with colored corner of base. If they do not, rotate lid 180 degrees.**



5951352

- 30. Lower lid onto crate base. Use caution to ensure excess poly liner materials do not cover bolt holes or stick out between edge of base and lid.

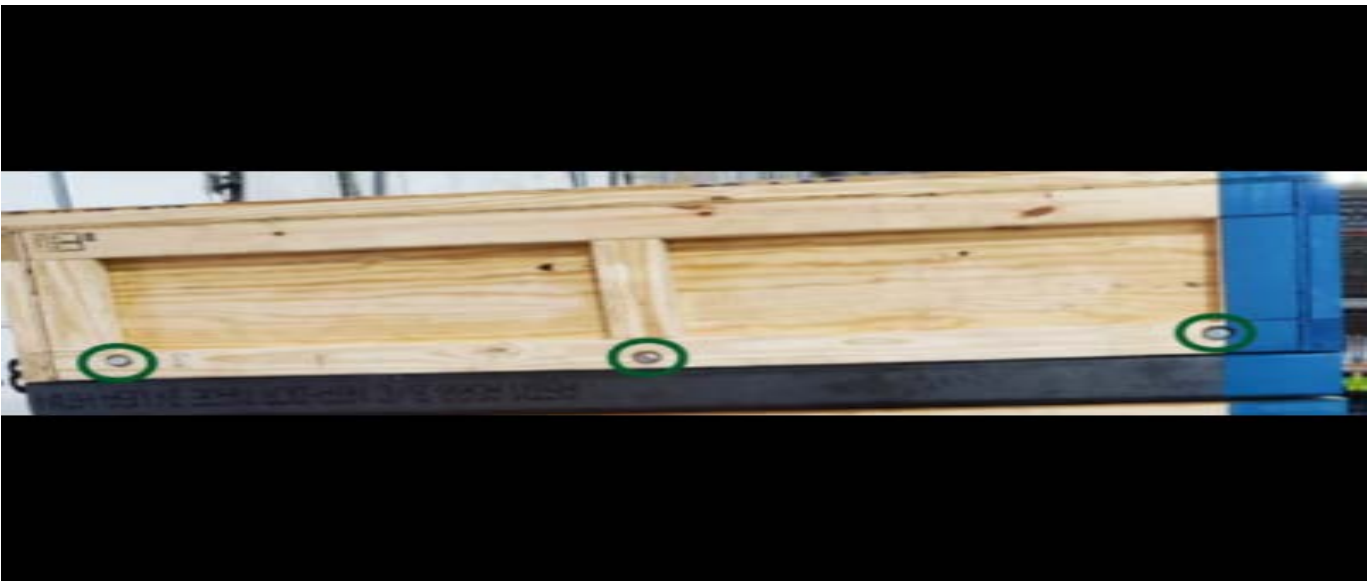


5951354

- 31. Disconnect lift assist straps from crate lid and ensure D rings are folded into recess.



5951161



5951171

32. Using the sixteen (16) M-16 hex head X 4" lag screws and washers previously removed from the crate, hand thread the bolts to the crate. Do not tighten at this time.
33. Once all bolts and washers are in place and not cross threaded, tighten each bolt to 25 ft lb. of torque.



5951440

- 34. Reverse the two (2) class 9 labels to read “Damaged/Defective (one on each side of the container)
  - 34.A. Open the three (3) spring clips and reverse the label to show UN34809 – Damaged / Defective.
  - 34.B. Close the three (3) clips to secure the label in place (one on each side of the container).
- 35. Additional Information
  - **DO NOT** stack loaded containers more than 2 high.
  - Ensure that all legal requirements for shipment of this material have been met, including those applicable to you as the shipper of dangerous goods/hazardous materials.
  - Replacement packing material for shipping:
    - **US dealers** - If required, obtain replacement packaging materials through the SNT app in Global Connect (same app used to order and return batteries).
    - **Canadian dealers** - If required, obtain replacement packaging materials through YORK ELECTRONICS OSHAWA at 1-888-650- 9675 ext. 307.

Version	1
Modified	Released January 12, 2022

