

**What's New** (Specific text highlighted):

- Attachment updated
- Claim Information

MODEL

E-Series	Model Description
F39	X2 Sports Activity Coupe
F44	2 Series Gran Coupe
F48	X1 Sports Activity Vehicle

SITUATION

Customer complains of musty odor or damp front footwell carpet.

CAUSE

- The condensate drain hose is blocked by the heat shield
- The condensate drain hose is not attached properly to the housing
- The condensate drain hose was damaged during installation

CORRECTION

- Modify the condensate drain hose even though the hose was replaced or had no damage

Or

- Replace the condensate drain hose if it is damaged or drains slowly and perform the modification

PROCEDURE

1. Follow the attached repair procedure- SI "B640116_Modify_Drain_Hose".

NOTE: This inspection and repair can be performed without removal of the IHKA heater/AC box assembly.

2. Recheck for proper condensate drainage from the vehicle.
3. After repair, turn the heat to max for about 15 to 20 minutes.

PARTS INFORMATION

Part Number	Description	Quantity
64 11 9 262 789	Condensation water drain	1
Or		
64 11 9 139 887	Condensation water drain	1
And		
64 11 9 262 790	Retaining ring	If needed

CLAIM INFORMATION

Covered under the terms of the BMW New Vehicle Limited Warranty for Passenger Cars and Light Trucks.

Defect Code	6411900100	F39 F4x Water ingress in footwell / center console (condensation drainage hose)
--------------------	-------------------	--

The vehicle is already in the workshop

Work Pkg	Labor Operation	Description (Plus work)	Labor Allowance
#1	00 68 919	Checking the seal installation (The issue described in this bulletin is found not to be the source of the water ingress)	Refer to AIR
Or:			
#2	00 68 920	Check and replace the condensate drain	Refer to AIR

Or:

The vehicle arrives at your center for this issue (No other Main work will be performed/claimed during this workshop visit)

Work Pkg	Labor Operation	Description (Main work)	Labor Allowance
#3	00 68 316	Checking the seal installation (The issue described in this bulletin is found not to be the source of the water ingress)	Refer to AIR
Or:			
#4	00 68 317	Check and replace the condensate drain	Refer to AIR

Only one of the flat rate labor operation codes listed above can be used for claim submission/reimbursement purposes. Also, only one Main work flat rate labor operation code can be claimed per workshop visit.

Claim Repair Comments

Only reference the SIB number and the work package (Pkg) number performed in the RO technician notes and in the claim comments (For example: B64 04 16 WP 1), unless otherwise required by State law.

And, as needed:

Sublet – Bulk Materials (WP # 2 and #4, RO and Claim Comments Required)

Sublet Code 4	Up to \$5.00	Reimbursement for the supported amount repair-related bulk materials (Do not use the BMW part numbers for claim submission)
----------------------	--------------	---

Sublet reimbursement calculation for claiming the applicable repair-related bulk materials (BMW part numbers) is at the dealer net price amount for the quantities used plus your center’s handling.

Enter this material cost in sublet and itemize the amount on the repair order and in claim comment section.

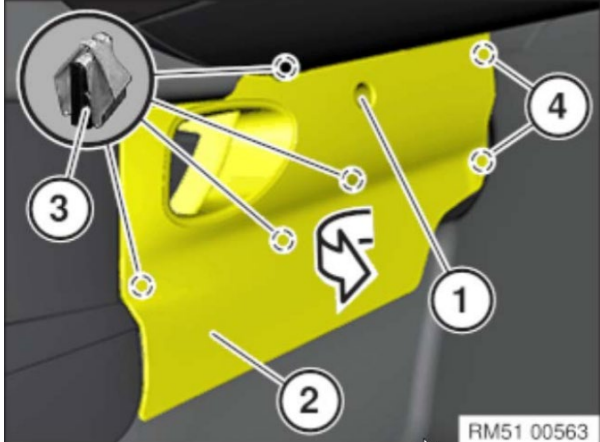
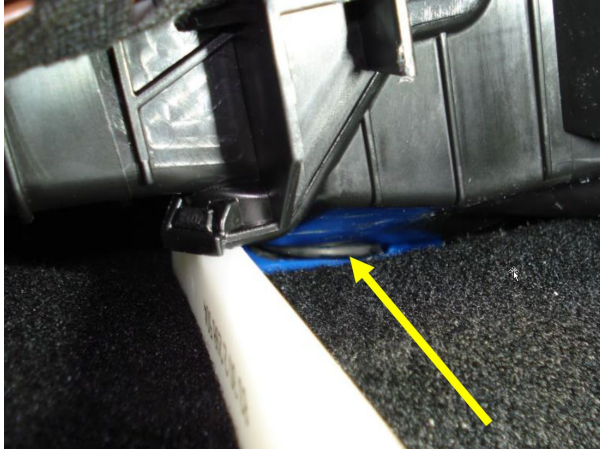

QUESTIONS REGARDING THIS BULLETIN

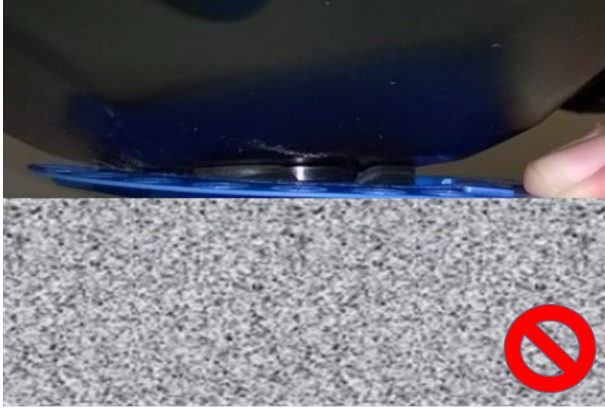
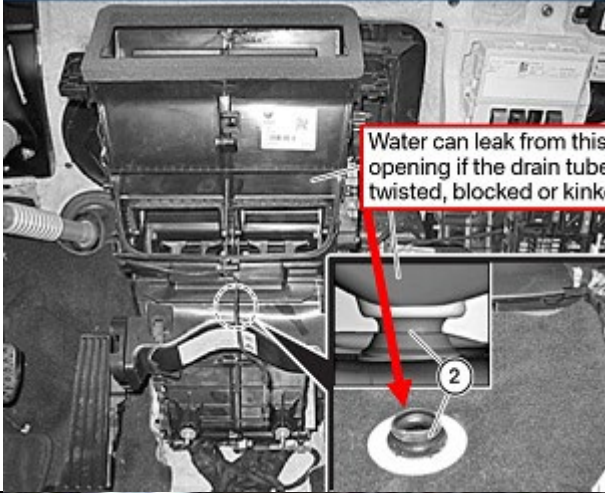
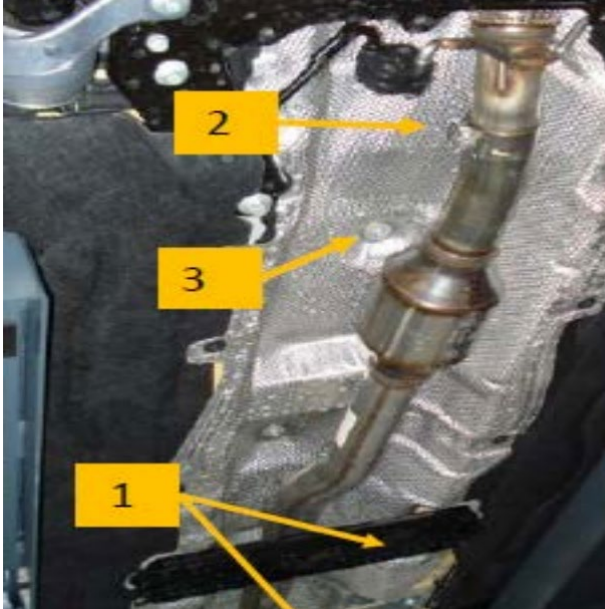
Technical inquiries	Submit feedback at the top of this bulletin
Warranty inquiries	Submit an IDS ticket to the Warranty Department
Parts inquiries	Submit an IDS ticket to the Parts Department

Supporting Materials

[picture_as_pdf B640416 Attachment.pdf](#)

Locate IHKA housing A/C condensate drain by removing passenger side console foot well trim.

	<ol style="list-style-type: none"> 1. Use Repair Instruction 51 45 ... and remove center console trim from both sides of the console. Release screw (1) Release side center console trim panel (2) from retaining clips (3). Feed out side center console trim panel (2) from guides (4) and remove.
	<ol style="list-style-type: none"> 1. Press carpet down using a nylon lever to expose drain.
	<ol style="list-style-type: none"> 2. If drain is twisted or deformed it must be replaced.

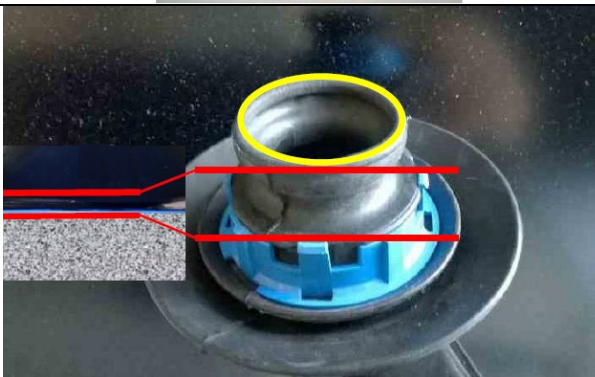
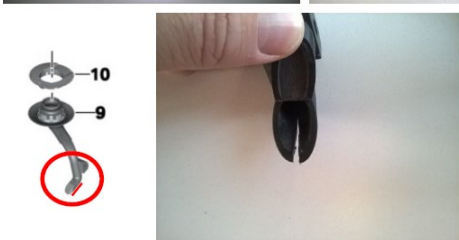
	<p>3. This close up shows drain incorrectly installed.</p>
	<p>4. Water leaks can occur in these areas causing the molding smell from carpet.</p>
	<p>5. Remove brackets (1) and heat shield screws (2) and (3).</p>



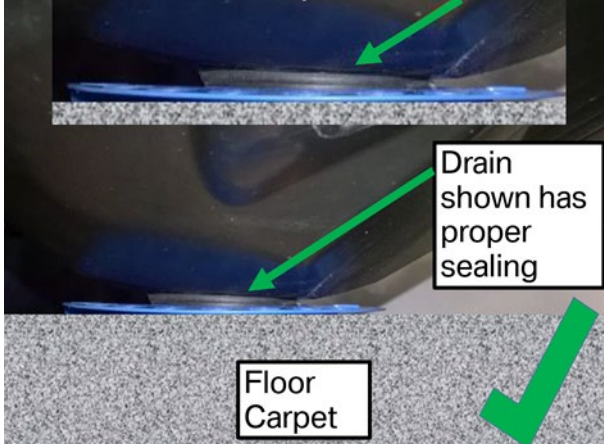
6. Remove the clamp and support exhaust to expose the drain.



7. Prepare new drain by cutting the lower section approximately 30 mm. This will prevent future blockage.



8. Before installing new drain, lubricate (silicone spray) top of drain shown by the yellow ring. Make sure the drain is not deformed and install parallel to the floor and carpet.

	<p>9. A correct drain installation is shown. Install all removed parts.</p>
---	---