



NUMBER: 23-007-22

GROUP: 23 - Body

DATE: March 2, 2022

This bulletin is supplied as technical information only and is not an authorization for repair. No part of this publication may be reproduced, stored in a retrieval system, or transmitted, in any form or by any means, electronic, mechanical, photocopying, or otherwise, without written permission of FCA US LLC.

SUBJECT:

Dual Pane Sunroof Headliner Trim Ring Separation

OVERVIEW:

This bulletin involves reattaching the dual pane sunroof trim ring to the headliner.

MODELS:

2022 (WS) Grand Wagoneer/Wagoneer

NOTE: This bulletin applies to vehicles within the following markets/countries: North America.

NOTE: This bulletin applies to vehicles built on or before October 09, 2021 (MDH 1009XX) equipped with a Tri Pane Panoramic Sunroof (Sales Code GWM).

SYMPTOM/CONDITION:

The customer may describe the following:

- A rattle noise coming from the front, or rear edge of the dual pane sunroof opening when driving the vehicle.

PARTS REQUIRED:

| Qty. | Part No. | Description |
|--------|----------|---|
| 1 | NPN | Adhesive Cartridge: LORD 7545A/B LP-50 1:1, P/N 3003923 |
| 1 | NPN | Adhesive Glue Mixer Tips LP-50 (12 pack), P/N 3004476 |
| 1 (AR) | NPN | Scotch Blue Painters Masking Tape |

SPECIAL TOOLS/EQUIPMENT REQUIRED:

| | |
|-----|--|
| NPN | Adhesive Dispense Gun LP-50, P/N 3001112 |
|-----|--|

NOTE: Adhesive is available through multiple vendors in a package of 12 along with a 12 pack of tips. Both can be submitted for the full amount. Shelf life is 6 months. If you have a second vehicle in that time frame, no additional reimbursement should be submitted.

DIAGNOSIS:

If the customer describes the symptom/condition listed above, perform the Repair Procedure.

REPAIR PROCEDURE:

NOTE: The dual pane sunroof trim ring needs to be attached to both the front and rear of the headliner.

Sunroof Trim Ring Repair Procedure - Rear:

1. Close dual pane sunshade.
2. Put a protective covering over vehicle interior below rear edge of dual pane opening.
3. Apply Scotch blue painters masking tape to headliner surface (Fig. 1) .



Fig. 1
Taped Rear Headliner

4. Pull the down headliner 5 mm (0.5 cm).
5. Cut off two notches from disposable glue tip (Fig. 2) .



Fig. 2
Cut Glue Tip

6. Apply glue on headliner under detached trim ring (Fig. 3) and (Fig. 4) .

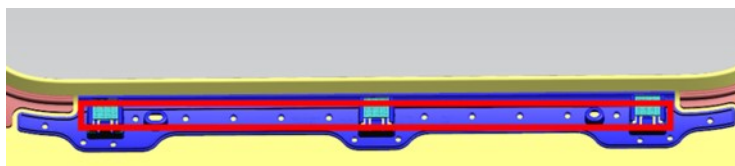


Fig. 3
Area To Apply Glue

CAUTION! Ensure a padding of some kind is used while clamping the trim ring to avoid damaging the headliner. Failure to do so may result in damage to the headliner.

7. Using suitable clamps, apply three clamps evenly spaced across rear opening of trim ring (Fig. 4) and (Fig. 5) .

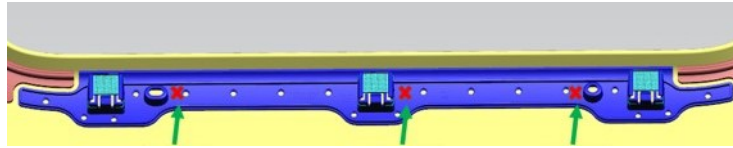


Fig. 4
Area To Clamp



Fig. 5
Rear Area Clamped

8. Leave clamps on vehicle for 60 minutes.
9. Cycle dual pane sunroof shade open and then re-close.

Sunroof Trim Ring Repair Procedure - Front:

1. Open sunroof shade.
2. Apply Scotch blue painters masking tape to headliner show surface across full length of opening (Fig. 6) .



Fig. 6
Taped Front Headliner

3. Cut off two notches from disposable glue tip (Fig. 7) .



Fig. 7
Cut Glue Tip

4. Pull the down headliner 5 mm (0.5 cm).
5. Apply glue starting at the outboard corner and apply bead towards center console (Fig. 8) and (Fig. 9) .



Fig. 8
Applying Glue

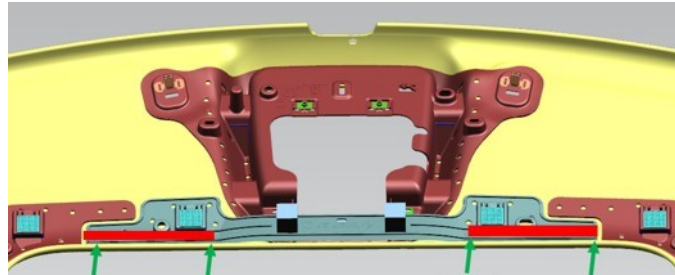


Fig. 9
Area To Glue

6. Using a two suitable clamps, apply one clamp on the outboard side of each velcro attachment (Fig. 10) .



Fig. 10
Clamping Velcro

CAUTION! Ensure a padding of some kind is used while clamping the trim ring to avoid damaging the headliner. Failure to do so may result in damage to the headliner.

7. Leave clamps on vehicle for 60 minutes (Fig. 11) .



Fig. 11
Front Area Clamped

8. Remove clamps and tape from headliner.
9. Close the dual pane sunroof shade.

POLICY:

Reimbursable within the provisions of the warranty.

TIME ALLOWANCE:

| Labor Operation No: | Description | Skill Category | Amount |
|----------------------------|---|---------------------------------|---------------|
| 23-10-35-91 | Frame, Sunroof to Headliner - Re-Adhere both Front and Rear (1 - Semi-Skilled) | 6 - Electrical and Body Systems | 0.4 Hrs. |

FAILURE CODE:

| | |
|----|----------------|
| ZZ | Service Action |
|----|----------------|