

## SERVICE BULLETIN

Reference number:	SB-22-1601	Issued: 09 March, 2022
Subject:	Repair Process for Clash Damage to Bonnet or Front Doors	
Model(s):	DBX	
Applicable to:	All Dealers	
VIN Range:	Not Applicable	
Distribute to:	After Sales Manager Executive Manager Service Manager Sales Manager	Warranty Staff Technician(s) Parts Staff

### Reason for this Service Bulletin

Aston Martin has found that on some DBX vehicles the front doors can touch other parts of the vehicle when opened. This is caused by incorrect front door or bonnet clearances.

This can cause damage to the bonnet and front doors which means body repair, paint, and adjustment is necessary.

Refer to the workshop procedures that follow to estimate the level of the damage and do the necessary repair method.

**Note: A WW prior authority code is necessary for all paint and body repairs. When a WW code has been received, you must use your approved AMBRC to complete the repair.**

### Workshop Procedure

Examine the damaged area and estimate the level of damage for the scenarios that follow.

**CAUTION: CARE MUST BE TAKEN WHEN YOU OPEN AND ADJUST THE DOOR. THE PAINTWORK CAN BE DAMAGED IF PARTS TOUCH.**

- Figure 1 shows an example of damage to the front door and bonnet. This level of damage can be repaired and must be completed by your approved AMBRC.

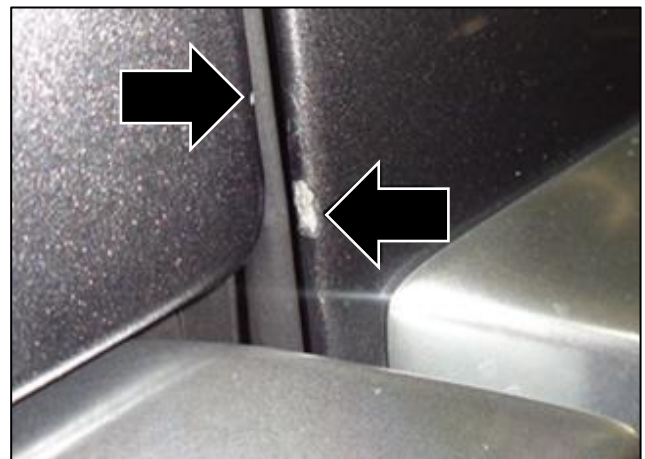


Figure 1

- Figure 2 shows an example of damage to the front door and front door seal. This level of damage can be repaired and must be completed by your approved AMBRC.



**Figure 2**

- Figure 3 shows an example of damage to the front door and bonnet. This level of damage can be repaired and must be completed by your approved AMBRC.



**Figure 3**

- When the repair process has been completed you must refer to the Workshop Manual for the applicable alignment procedures.

If you have any questions related to this document, please refer to the 'Contact Us' link on this webpage or contact your local Dealer or After Sales Manager.

The English version of this Service Bulletin is written in Simplified Technical English to ASD-STE100™.