

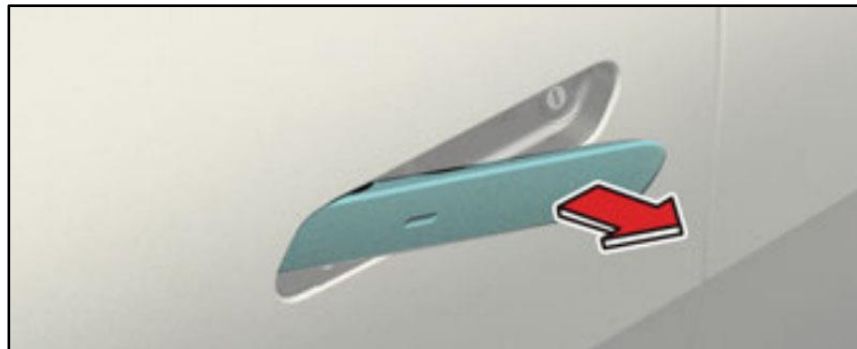


GROUP	MODEL
BOD	2022MY EV6 (CV) GT-Line w/Electric Door Handles
NUMBER	DATE
307	May 2022

TECHNICAL SERVICE BULLETIN

SUBJECT: **ELECTRIC DOOR HANDLE NOISE**

This bulletin provides information regarding the auto flush operation of the outside door handles on some 2022MY EV6 (CV) GT Line vehicles equipped with electric door handles, produced from November 17, 2021 through February 8, 2022, which may exhibit noise when operating due to insufficient grease on the door handle push rod actuator. Follow the procedure outlined in this publication to apply grease to the push rod actuator in the outside electric door handle on all four (4) doors.



Electric Door Handle on EV6 GT

Repair Procedure:

IMPORTANT

Illustrations shown are for the front door. Lower the door glass 'halfway down' prior to disassembly.
Repeat the repair procedure on ALL four (4) doors to address the door handle noise.

1. Remove the front door trim (A) by referring to the "Body (Interior and Exterior) → Front Door → Front Door Trim → Repair procedures" chapter in the applicable Shop Manual on KGIS.

NOTICE

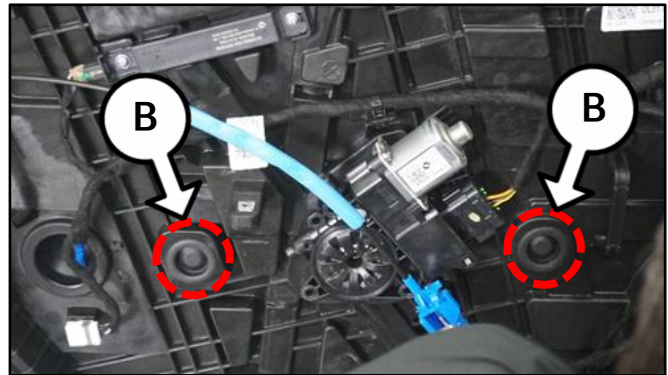
It is **NOT** necessary to disconnect the 12V battery for this procedure.

NOTICE

Use a non-marring trim removal tool (such as Snap-on® Part Number PBN5 or equivalent) to avoid damaging trim pieces.



2. Remove the two (2) module plugs (B).

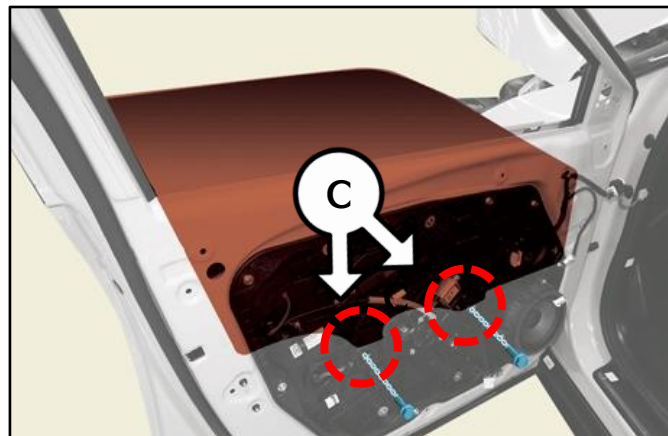


3. Remove the window glass retaining bolts (C).



Tightening torque for Window Glass Bolts:
5.8 - 8.7 lb.ft (7.8 - 11.8 N.m)

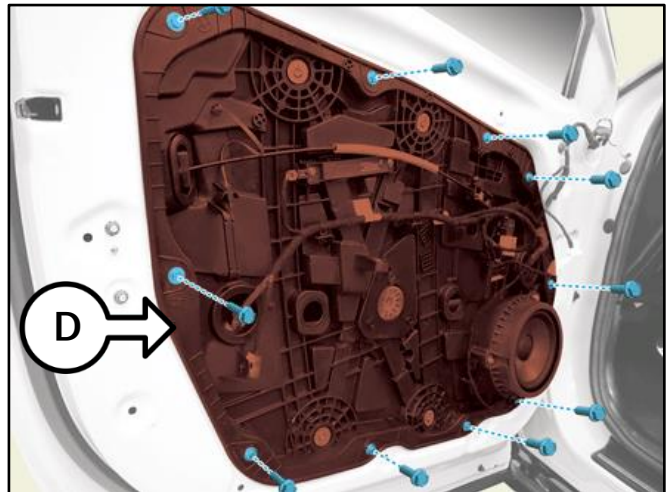
Note: It is not necessary to remove the power window motor.



SUBJECT:

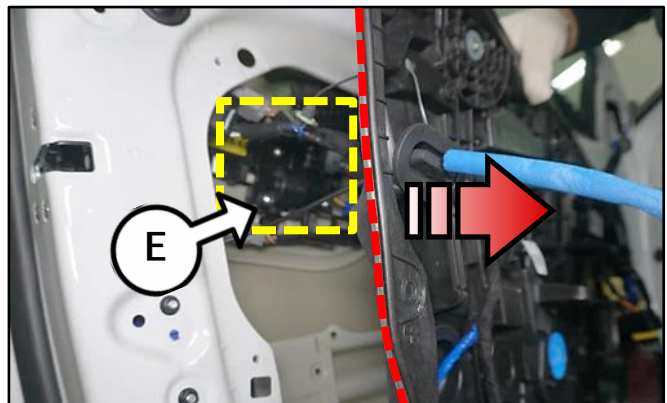
ELECTRIC DOOR HANDLE NOISE

- 4a. Using both hands, hold glass from opposite sides and raise it up to detach from the door module.
- 4b. Clamp or tape it securely to the top of the door frame as shown.
5. Remove door module (D) retaining bolts.



6. **Carefully** pull the door module away from the door to allow access to the door handle assembly (E) from inside the door.

Note: It is not necessary to remove the module completely.



7. Manually close the door latch with a screwdriver or similar tool.

Note: When working on the rear doors, the front doors must be closed, or both door latches in the locked position, to move the handles.

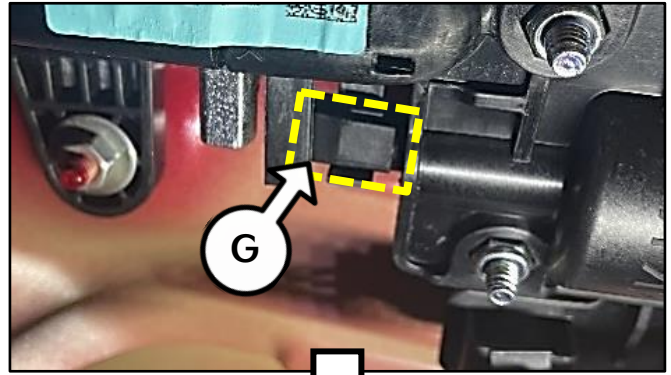
CAUTION

DO NOT shut the door with the latch in the closed position - doing so may damage the latch.

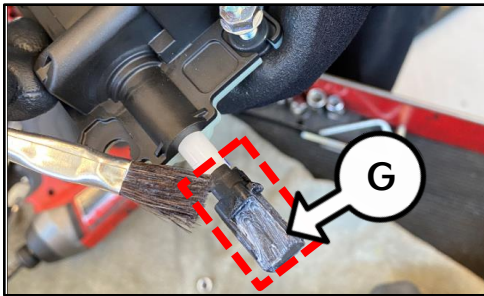


8. Using an acid brush or equivalent tool, apply grease to the plunger (G) on the push rod actuator.

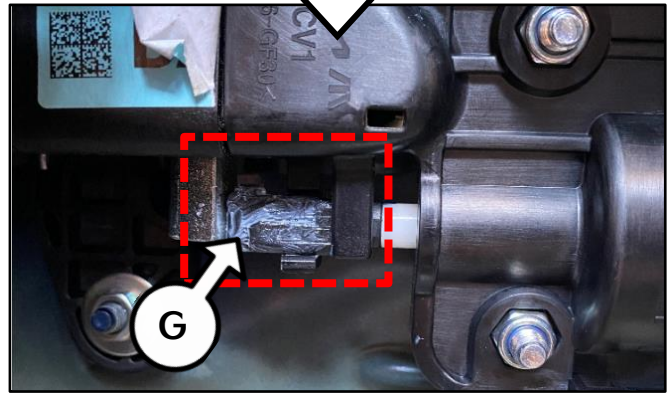
Note: Using the key fob, 'lock' and 'unlock' the door so that the pushrod actuator (G) engages in and out to access the repair surfaces.



Be sure to apply grease to ALL FOUR (4) SIDES and END of the push rod plunger.



Note: Images shown of the removed door handle assembly is for illustration purpose only.



⚠ CAUTION

Failure to use the lubricant specified on page 5 of this bulletin may result in an ineffective or repeat repair.

10. Reassemble all removed parts in reverse order of disassembly and pull the inner or outer handle after repair to release the latch from the closed position.
11. Confirm normal operation of the door switches, door handle and that the noise is no longer present.
12. Repeat steps 1-11 for the remaining three (3) doors.

SUBJECT:

ELECTRIC DOOR HANDLE NOISE**AFFECTED VEHICLE RANGE:**

Model	Production Date Range
EV6 (CV)	November 17, 2021 to February 8, 2022

REQUIRED TOOL:

Tool Name	Figure	Comments
Lubricant* 81685 3S000		One container Covers 30 vehicles Maximum order quantity one (1) per dealer
Acid Brush		Locally sourced

! CAUTION

Do not use Kia Dampening Grease (P/N UM011-CHA052), as it is not compatible with the grease used by the factory.

REQUIRED PART:

Part Name	Part Number	Qty.
Fasteners*	82315 L0000	As needed

*Only replace if damaged.

WARRANTY INFORMATION:

N Code: Q32 C Code: ZZ1

Claim Type	Causal P/N	Qty.	Repair Description	Labor Op Code	Op Time	Replacement P/N	Qty.
W	82650 CV000	0	Electric Door Handle Noise Repair (F & R - 4 Doors)	82650F01	1.4 M/H	N/A	0

