



GROUP	MODEL
ELE	2017MY Cadenza (YG) Sportage (QL)
NUMBER	DATE
254	May 2022

TECHNICAL SERVICE BULLETIN

SUBJECT:

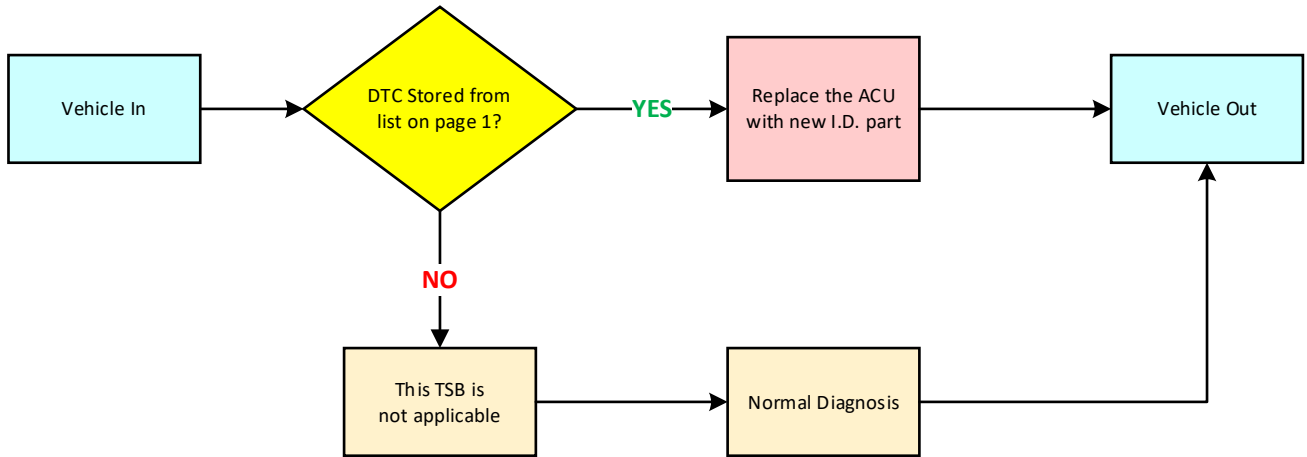
AIRBAG CONTROL UNIT (ACU) INSPECTION & REPLACEMENT

This bulletin provides information associated with the 'Warranty Extension Program' (WTY027) to inspect and, if necessary, replace the Airbag Control Unit (ACU) with a new one on 2017MY Cadenza (YG) produced from June 2, 2016 through July 12, 2017 and Sportage (QL) vehicles produced from December 10, 2015 through April 11, 2017. If these vehicles exhibit an MIL 'ON' and one or more of the DTCs listed in the table below are stored, the ACU is to be replaced. Follow the procedure outlined in this publication for the inspection of DTCs and ACU replacement.

Note: ACU is also referred to as Supplemental Restraint System Control Module (SRSCM) in KGIS.

DTC	DTC Description
B1348	Driver Airbag Resistance Circuit Short to Ground (1st stage)
B1483	Driver Airbag Resistance Circuit Short to Ground (2nd stage)
B1354	Passenger Airbag Resistance Circuit Short to Ground (1st Stage)
B1487	Passenger Airbag Resistance Circuit Short to Ground (2nd stage)
B1380	Side Airbag Front-Driver Resistance Circuit Short to Ground
B1384	Side Airbag Front-Passenger Resistance Circuit Short to Ground
B1475	Inflatable Curtain Airbag -Driver Resistance Circuit Short to Ground
B1479	Inflatable Curtain Airbag -Passenger Resistance Circuit Short to Ground
B1431	Side Airbag Rear-Driver Resistance Circuit Short to Ground
B1435	Side Airbag Rear-Passenger Resistance Circuit Short to Ground
B1713	Knee Airbag - Driver Resistance Circuit Short to Ground
B1718	Knee Airbag - Passenger Resistance Circuit Short to Ground
B1703	Buckle Pretensioner-Driver Resistance Circuit Short to Ground
B1708	Buckle Pretensioner-Passenger Resistance Circuit Short to Ground
B1363	Pretensioner Front-Driver Resistance Circuit Short to Ground
B1369	Pretensioner Front-Passenger Resistance Circuit Short to Ground
B1732	Anchor Pretensioner Front-Driver Resistance Circuit Short to Ground
B1736	Anchor Pretensioner Front-Passenger Resistance Circuit Short to Ground
B1375	Passenger Airbag Active Vent Resistance Circuit Short to Ground

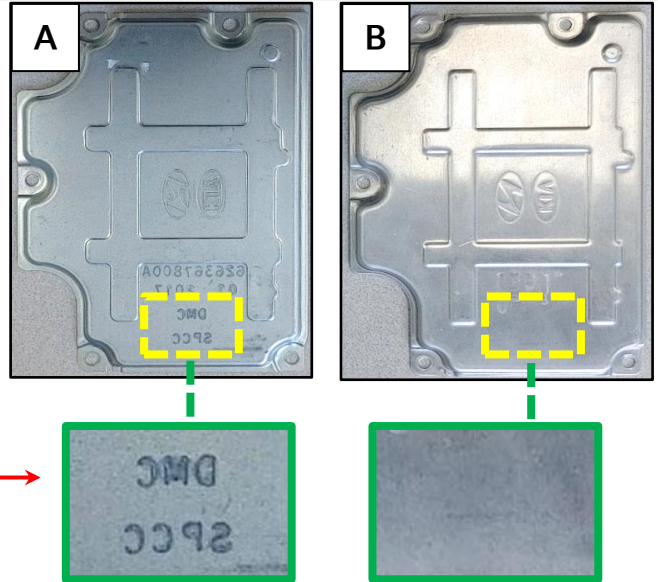
Flowchart:



Replacement Procedure:

1. Replace the ACU by referring to the “Restraint → SRCSM → SRS Control Module (SRCSM) → Repair procedures” chapter in the applicable Shop Manual on KGIS.

ⓘ IMPORTANT
After removing the old ACU, drill a hole through the center of the removed part and DO NOT re-use.

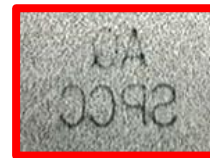


NEW Part Identification:

- A. Engraved initials “DMC” (backwards)
- B. No engraved initials

OLD Part Identification:

- The old part will have engraved initials “AQ” (backwards), as shown.




2. Clear DTCs and confirm normal operation.

SUBJECT:

AIRBAG CONTROL UNIT (ACU) INSPECTION & REPLACEMENT**AFFECTED VEHICLE RANGE:**

Model	Production Date Range
Cadenza (YG)	June 2, 2016 to July 12, 2017
Sportage (QL)	December 10, 2015 to April 11, 2017

REQUIRED PART:

Model	Part Name	Part Number	Figure	Qty.
Cadenza (YG)	Airbag Control Unit (ACU)*	95910 F6500		1
Sportage (QL)		95910 D9000**		1
		95910 D9050		

*Also called Supplemental Restraint System Control Module (SRSCM).

**Part number 95910 D9050 may be received and used instead, depending on supply availability.

WARRANTY INFORMATION:

N Code: I3R C Code: ZZ4

Model	Claim Type	Causal P/N	Qty.	Repair Description	Labor Op Code	Op Time	Replacement P/N	Qty.
YG	W	95910 F6500	0	DTC Inspection	222050R2	0.2 M/H	N/A	0
QL		95910 D9000 <u>or</u> 95910 D9050						
YG		95910 F6500	1	DTC Inspection and ACU Replacement	222050R1	1.0 M/H		
QL		95910 D9000 <u>or</u> 95910 D9050			222050R0	0.9 M/H		