



Technical Service Bulletin

60 Rattle noise near the central roof area

60 22 60 2054270/9 May 19, 2022. Supersedes Technical Service Bulletin Group 60 number 21-57 dated November 12, 2021, for reasons listed below.

Model(s)	Year	VIN Range	Vehicle-Specific Equipment
A6	2019 – 2021	All	Not Applicable
A6 allroad	2020 – 2021		
RS 6 Avant	2021		

Condition

REVISION HISTORY		
Revision	Date	Purpose
9	-	Revised header (Added Model and Model Year)
8	11/12/2021	Revised header (Added Model and Model Year) Revised <i>Service</i> (Updated photos and procedure) Revised <i>Warranty</i> (Updated Labor Operations and SRTs) Revised <i>Required Parts and Tools</i> (Added lubricant)
7	12/18/2020	Revised <i>Service</i> (Updated photo) Revised <i>Additional Information</i> (Added reference)

Customer states:

- There is a rattling noise that sounds like it is coming from the central roof area or from the back of the sunroof assembly. This occurs mainly on rough roads.



Technical Service Bulletin

Technical Background

There are a number of issues as opposed to a singular cause that contributes to the creation of noises in the Panoramic sunroof in the A6.

Production Solution

Several improvements have been implemented in production to abate noises in the Panoramic sunroof. Each improvement has been implemented at different times in the solution process. As a consequence, the repairs described in this TSB may not be necessary as the improvement may have already been implemented. Ensure that all of the solutions described here have been addressed.

Service



Note:

These repairs are to be completed on both the left and right side of the assembly.

1. Remove the glass sunroof panel according to the Elsa Repair Manual instructions.
2. Close the roller shade by about 20cm (Figure 1).



Figure 1. Closing the roller shade.



Technical Service Bulletin

3. Loosen the roller shade from the drive cable and push the material back until the bolts are exposed, then remove the bolts completely (Figures 2 -5).

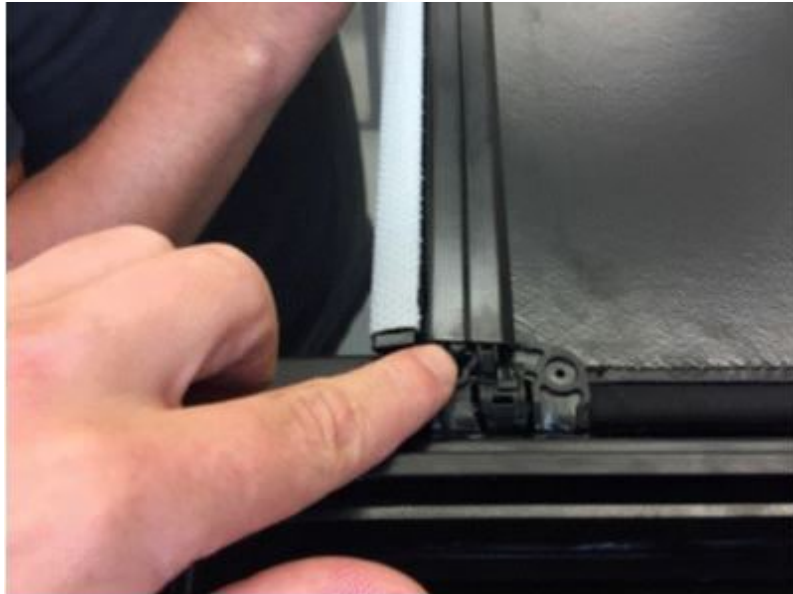
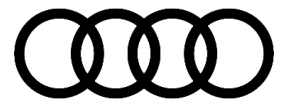


Figure 2. Move the beam off of the drive laterally.



Figure 3. Beam removed from the drive.



Technical Service Bulletin



Figure 4. Push the material back to expose the bolts.

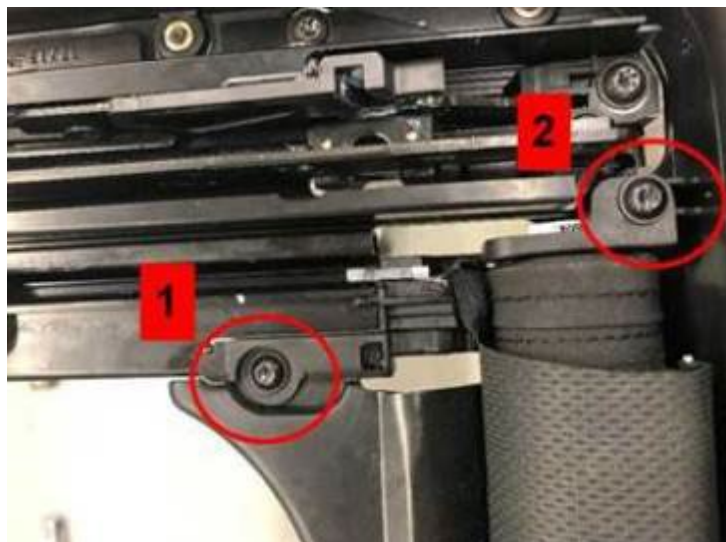


Figure 5. Remove the bolts.



Technical Service Bulletin

4. Remove the roller shade by sliding it backward and clean the mounting points as shown in Figure 6 and 7. Use the cleaning solution D 009 401 04 or equivalent surface preparation solvent (e.g. isopropyl alcohol or adhesion promoter) to prepare the surfaces for adhesive-backed felt strip material.



Figure 6. Slide roller shade backward.



Technical Service Bulletin



Figure 7. Areas to clean using cleaning solution D 009 401 04.

5. Push down on the roller shade pan and starting from the bottom of the guide rail, wrap the areas shown in figure 8 with sections of felt tape 000 979 950 and fold them forward and over to the top of the guide rail such that both the top and bottom of the tabs are isolated (Figure 8 and 9).





Technical Service Bulletin

Figure 8. Applying felt tape.

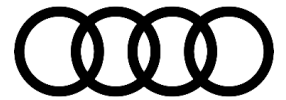


Figure 9. Apply felt tape on points shown. The tops and bottoms of the tabs must be isolated.

6. Apply thread locker to the screw hole shown in Figure 10. Reinstall the bolts to the roller shade and torque to 3Nm (Figure 11).



Figure 10. Apply thread locker in this area.



Technical Service Bulletin



Figure 11. Torque screws to 3Nm.

7. On the front of the sunroof guide rail, loosen that bolt a few turns but do not remove the screw completely (Figure 12).



Figure 12. Loosen the bolt a few turns but do not remove the screw completely.

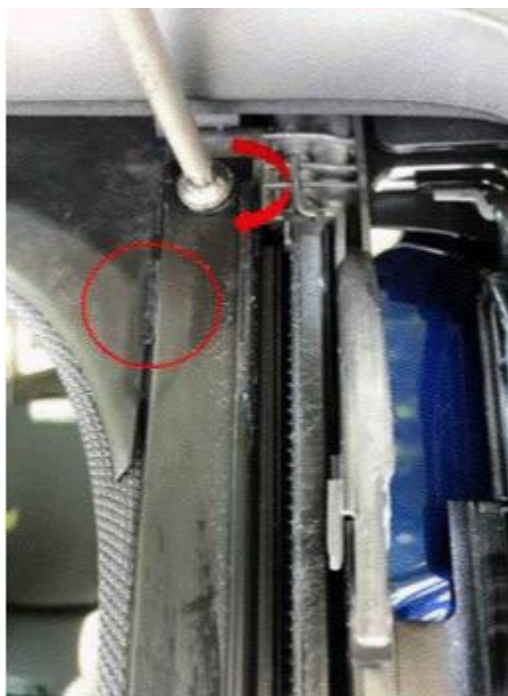


Technical Service Bulletin

8. Lift the guide rail slightly using a plastic wedge. Place a 20mm x 20mm section of felt strip material 533 867 910 A between the guide rail and the frame as shown in Figure 13. The backing for the adhesive side must be removed and the felt tape section adhered before the screw is tightened. Reinstall the screw and tighten it to 5 Nm (Figure 14).



Figure 13. Isolation of guide rail and frame by the installation of a section of felt strip material.





Technical Service Bulletin

Figure 14. Tightening of the screw with the felt strip material isolating the guide rail and the frame.

9. On the rear of the sunroof guide rail, loosen the bolt shown in Figure 15 for a few turns but do not remove the bolt completely.

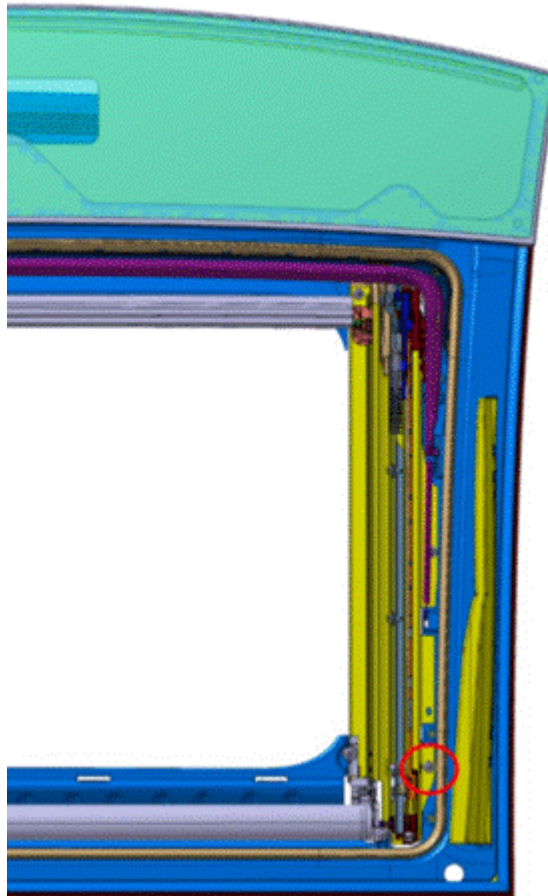


Figure 15. Loosen the bolt a few turns but do not remove the screw completely.



Technical Service Bulletin

10. Insert a small plastic wedge between the guide rail and the frame (red arrow in Figure 16). Separate the two parts slightly. Apply special lubricant G 060 567 A2 between the guide rail and the frame from the end of the rail to the bolt location. Tighten the bolt to 5 Nm.

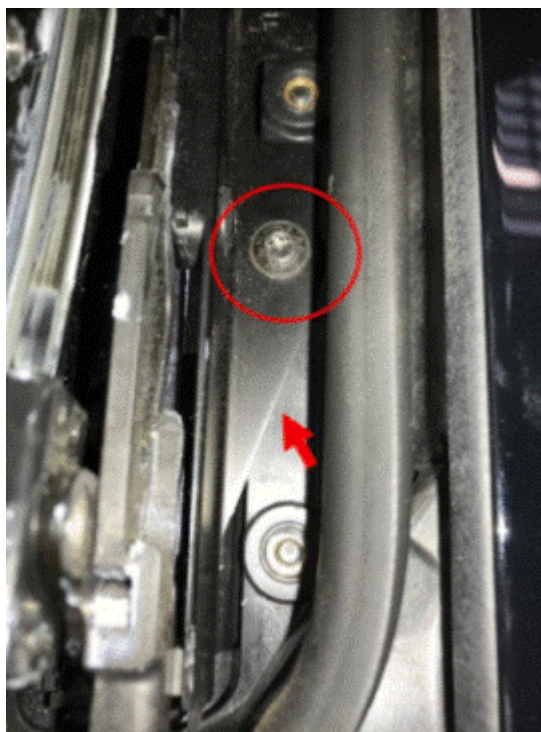


Figure 16. Location of rear guide rail bolt and area to be lifted with a plastic wedge.

11. Measure and mark the center of the glass sunroof panel structure shown in Figure 15. Clean this area with cleaning solution D 009 401 04 or equivalent surface preparation solvent (e.g. isopropyl alcohol or adhesion promoter) to prepare the surfaces for adhesive-backed felt strip material. Apply a 20mm x 20mm section of adhesive felt strip material 533 863 288 A to this central area of



Figure 17. Area of sunroof glass panel structure to be prepared.



Technical Service Bulletin

the glass sunroof panel structure as shown in Figures 17 and 18.

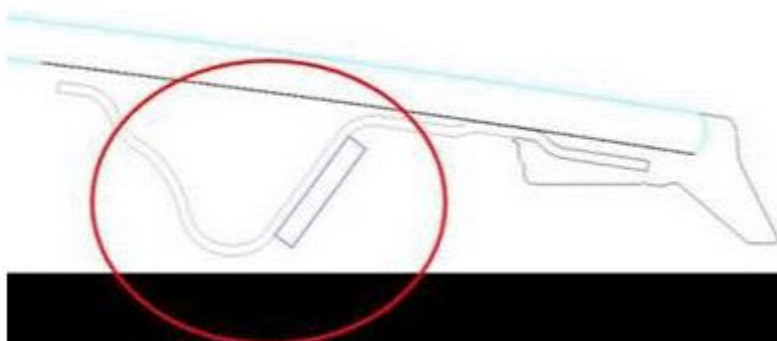


Figure 18. Affix adhesive felt strip material to the area shown.



Figure 19. Adhesive felt strip material affixed to the center area of sunroof glass panel structure.

12. Reassemble all components loosened or removed to perform these repairs. Make any necessary adjustments to the sunroof glass panel according to the specifications in Elsa, *Body >> Body Exterior >> 60 Sunroof >> Sliding Sunroof >> Glass Panel, Adjusting*. Reestablish, if necessary, all basic settings to the sliding roof and roller shade electronics.

Warranty



Technical Service Bulletin

Claim Type:	<ul style="list-style-type: none"> • 110 up to 48 Months/50,000 Miles. • G10 for CPO Covered Vehicles – Verify Owner. • If the vehicle is outside any warranty, this Technical Service Bulletin is informational only. 		
Service Number:	<ul style="list-style-type: none"> • Roller shade or guide rail repair: 6028. • Glass sunroof panel repair: 6039. 		
Damage Code:	0020		
Labor Operations:	Roller shade repair:		
	Glass tilting roof panel remove + reinstall	6039 1900	See SRT with associated operations
	Sunshade removal + reinstall	6070 1950	See SRT with associated operations
	Isolate points of contact in roller shade	6070 4199	20 TU
	Guide rail repair:		
	Glass tilting roof panel remove + reinstall	6039 1900	See SRT with associated operations
	Sunshade removal + reinstall	6070 1950	See SRT with associated operations
	Isolate points of contact in the guide rail	6035 4299	15 TU
	Glass sunroof panel repair:		
	Glass tilting roof panel apply felt material	6039 4999	5 TU




Technical Service Bulletin

Diagnostic Time:	GFF	No allowance	0 TU
	Road test prior to the service procedure	0121 0002	10 TU
	Road test after the service procedure	0121 0004	10 TU
Claim Comment:	As per TSB 2054270/9		

All warranty claims submitted for payment must be in accordance with the *Audi Warranty Policies and Procedures Manual*. Claims are subject to review or audit by Audi Warranty.

Required Parts and Tools

Always check with your Parts Department and/or ETKA for the latest information and parts bulletins.		
Part Number	Part Description	Quantity
See ETKA	Fasteners, Bolts, Nuts, and Screws as needed per the Repair Manual	See ETKA/ELSA
533863288A	 Adhesive felt strip	Shop Supply



Technical Service Bulletin

533867910A	 <p>Felt Strip</p>	Shop Supply
000979950	 <p>Webbing Adhesive Tape</p>	Shop Supply
G 060567A2	 <p>Special Lubricant</p>	.10



Technical Service Bulletin

<p>D 00940104 or equivalent surface preparation solvent (e.g. isopropyl alcohol or adhesion promoter).</p>	 <p>Cleaning Solution</p>	<p>.10</p>
--	--	------------

Additional Information

More information on this system can be found in the following resources:

- Elsa: Body >> Body Exterior >> 60 Sunroof >> Sliding Sunroof >> Glass Panel, Adjusting.

All parts and service references provided in this TSB (2054270) are subject to change and/or removal.

©2022 Audi of America, Inc. All rights reserved. The information contained in this document is based on the latest information available at the time of printing and is subject to the copyright and other intellectual property rights of Audi of America, Inc., its affiliated companies and its licensors. All rights are reserved to make changes at any time without notice. No part of this document may be reproduced, stored in a retrieval system, or transmitted in any form or by any means, electronic, mechanical, photocopying, recording, or otherwise, nor may these materials be modified or reposted to other sites without the prior expressed written permission of the publisher.