

MAS002980 (MSC 22-08)

Campaign 487
FROM Maserati TSO
TO Maserati Network



Service Campaign 487 MC20 - Water infiltration through door wiring area



DATE: April 1, 2022

Certain Maserati MC20 (M240) vehicles listed in ModisCs+ are involved in a Service Campaign to help prevent water infiltration through the door wiring area.

This possible infiltration is caused by a poor coupling between the aluminium bracket of the door connector and the carbon fiber of the monocoque body, which could be uneven in the coupling area.

This sealing is necessary to minimize the possibility of water pooling in a hollow section of the monocoque, which could also cause a sloshing noise while driving.

A new coupling has been implemented on later production vehicles to prevent any risk of infiltration.

If you have any questions, contact your Regional AfterSales Manager or the Technical Support Helpdesk.

Operational Procedure

1. Always check in ModisCS+ to see if the vehicle is involved in this campaign and if the campaign has not been previously performed.
2. Refer to the following Workshop Manual procedures for cleaning the bolts if thread locking compounds were used:

00.AB.065 - THREADED ELEMENT CLEANING TABLE

3. Before performing this campaign, carry out the following procedures to protect the interior:

00.AA.005 - VEHICLE INTERIOR PROTECTION

4. Place the car on a lift.
5. Disconnect the battery:

08.20.001 - BATTERY - Power supply connection - disconnection

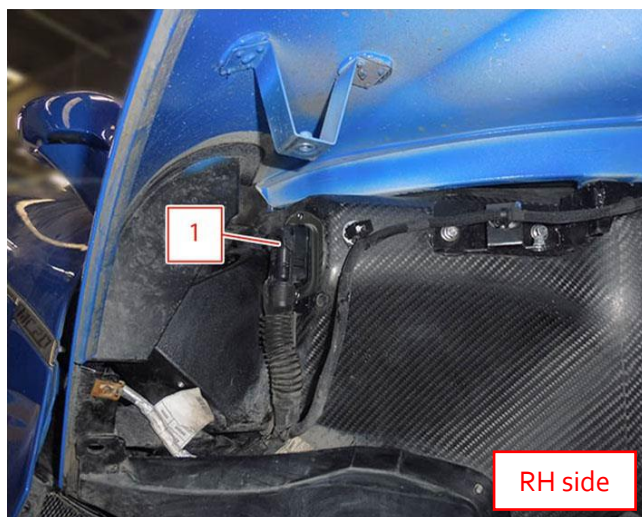
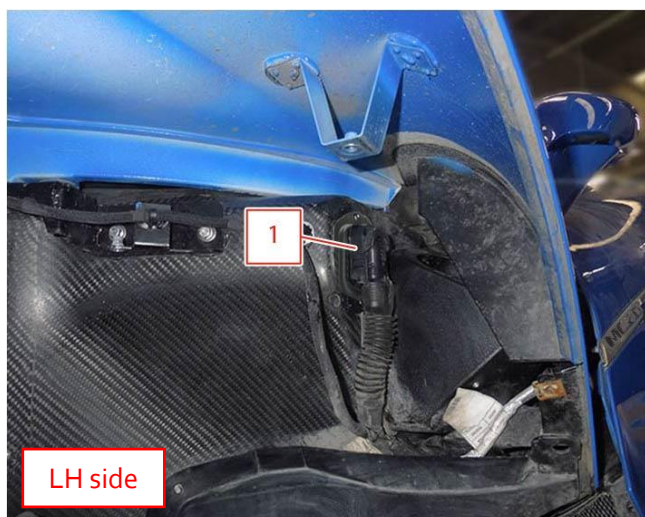
6. Remove the RH front wheel arch rear guard:

09.13.003 - RH FRONT WHEEL ARCH REAR GUARD - Removal/refitting or replacement

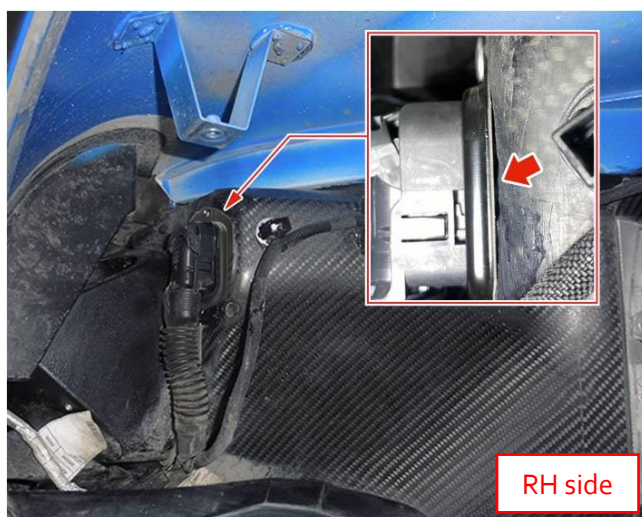
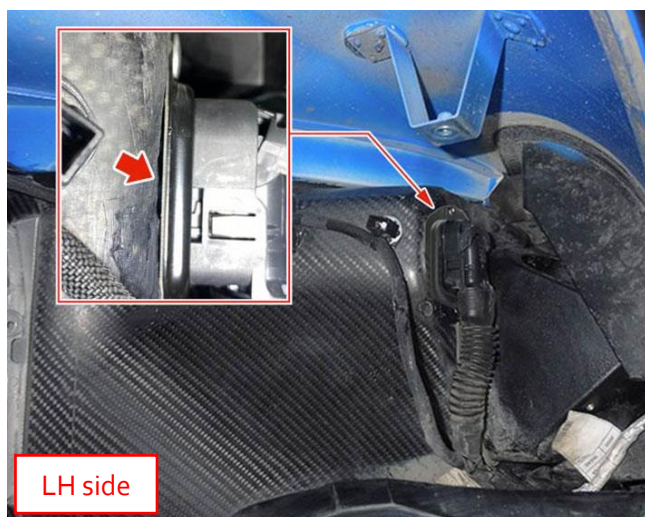
7. Remove the LH front wheel arch rear guard:

09.13.004 - LH FRONT WHEEL ARCH REAR GUARD - Removal/refitting or replacement

8. The job must be carried out on the DTB (Door to Body) connectors (1) inside the front wheel arches:



9. Proceed by sealing the highlighted areas



10. The sealants listed below are approved by the factory and must be purchased locally.

SEALANTS THAT CAN BE USED
Simson ISR 7008
Teroson MS 9360
Teroson MS 932
Teroson MS 939
Dowsil 7091
Threebond 1227E
Threebond 1207B
Loctite 5970
Loctite 5900

11. Apply the sealant (1) around the entire perimeter of the DTB (Door to Body) connector bracket:



12. The result should be as shown in the pictures below at the end of the application:



13. Refit the RH front wheel arch rear guard:
09.13.003 - RH FRONT WHEEL ARCH REAR GUARD - Removal/refitting or replacement
14. Refit the LH front wheel arch rear guard:
09.13.004 - LH FRONT WHEEL ARCH REAR GUARD - Removal/refitting or replacement
15. Re-connect the battery:
08.20.001 - BATTERY - Power supply connection - disconnection
16. Perform the removal sequence in reverse order for reinstallation.
17. Perform a functional test of the door and door related components.

NOTE: If water is present, remove the water with a vacuum through the indicated point shown below:



18. The procedure is complete.

Spare Parts

Silicone glue (see table above) is readily available from Würth. The glue must be purchased locally and claimed using warranty code **PN 980157115**:

- One can (310 ml) can be used to seal 10 sides.
- One PN 980157115 can be claimed for every 5 cars.
- Request reimbursement for the entire can for the first serviced vehicle.
- If the local cost of the glue exceeds the reimbursed amount, you may claim the difference in Sublet, attaching the purchase invoice to the warranty claim.

Warranty Claim

Complete the warranty claim as follows:

Description	Code
Campaign Number	487
Warranty Code	23
Fault Code	063
Component Code	8.60.012
Operation Code	8.60.012.A (0.80h)