



# SERVICE BULLETIN

Classification: EC21-020A	Reference: NTB22-007A	Date: March 2, 2022
------------------------------	--------------------------	------------------------

## 2013-2016 ALTIMA AND SENTRA; REAR OXYGEN SENSOR VOLTAGE INSPECTION

This bulletin has been amended. See **AMENDMENT HISTORY** on the last page.  
Please discard previous versions of this bulletin.

**APPLIED VEHICLES:** 2013-2016 Altima (L33) – QR25 engine ONLY  
2013-2016 Sentra (B17) – 50 State Emission Vehicles ONLY

### SERVICE INFORMATION

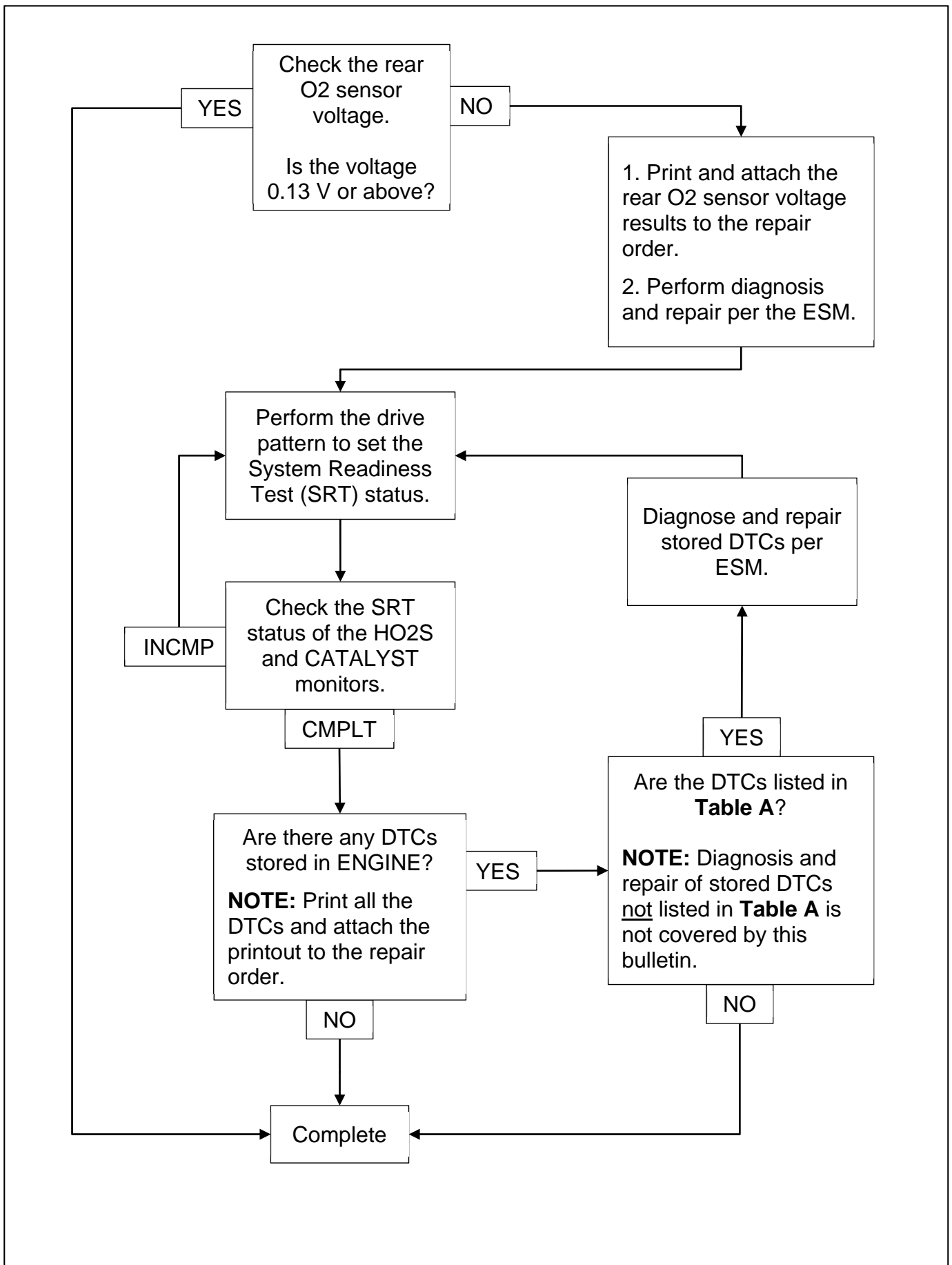
Nissan is committed to providing the highest levels of product quality and customer satisfaction. Therefore, Nissan is extending the emission warranty on the Rear Oxygen Sensor in the case of a short-to-ground condition to 20 Years or 200,000 miles, whichever occurs first. All other warranty terms, limitations, and conditions remain unchanged.

During the warranty extension period, customers are eligible for annual Rear Oxygen Sensor voltage checks, upon request, to determine if a Rear Oxygen Sensor short-to-ground condition exists.

If a Rear Oxygen Sensor short-to-ground condition does exist, Nissan will inspect and repair or replace, as necessary, the sensor or wiring and inspect for the existence of specific Diagnostic Trouble Codes (DTCs) for issues that may have been previously unidentified due to the short-to-ground condition. Only if one of the DTCs in **Table A** are first found after a short-to-ground repair, the corresponding issue(s) will also be corrected according to the service manual at no charge for parts and labor as part of this warranty extension.

Nissan Bulletins are intended for use by qualified technicians, not 'do-it-yourselfers'. Qualified technicians are properly trained individuals who have the equipment, tools, safety instruction, and know-how to do a job properly and safely. **NOTE:** If you believe that a described condition may apply to a particular vehicle, DO NOT assume that it does. See your Nissan dealer to determine if this applies to your vehicle.

## REPAIR OVERVIEW



## SERVICE PROCEDURE

### Inspect the Rear O2 Sensor Voltage

**NOTE:** Make sure the engine is OFF and let the vehicle cool down for 15 minutes before starting the **SERVICE PROCEDURE**.

**IMPORTANT:** Before starting, make sure:

- ASSIST on the CONSULT PC has been synchronized (updated) to the current date.
- All C-III plus software updates (if any) have been installed.

1. Connect a battery maintainer/smart charger to the vehicle.
2. Turn ON the ignition and the hazard warning lights.
3. Connect the VI to the vehicle.
4. Start C-III plus.
5. Wait for the VI to be recognized.
  - The serial number will display when the VI is recognized (Figure 1).
6. Select **Diagnosis (All Systems)**.

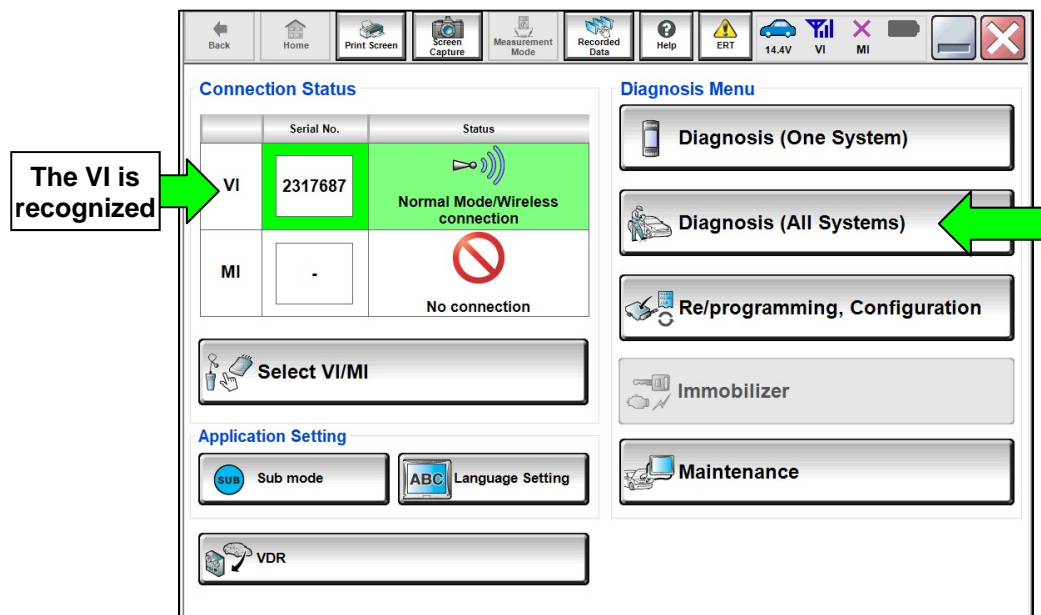


Figure 1

7. Select **ENGINE**.

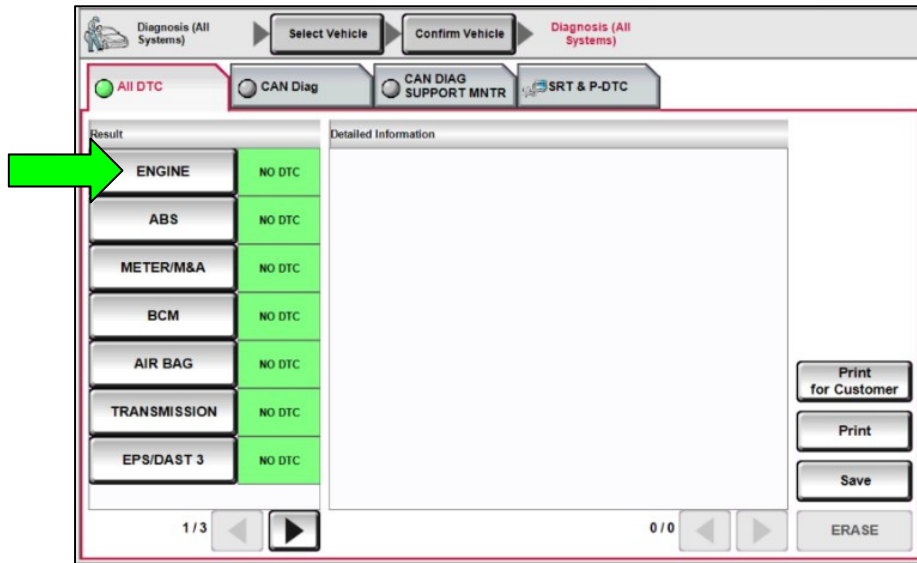


Figure 2

8. Select **Data Monitor**.

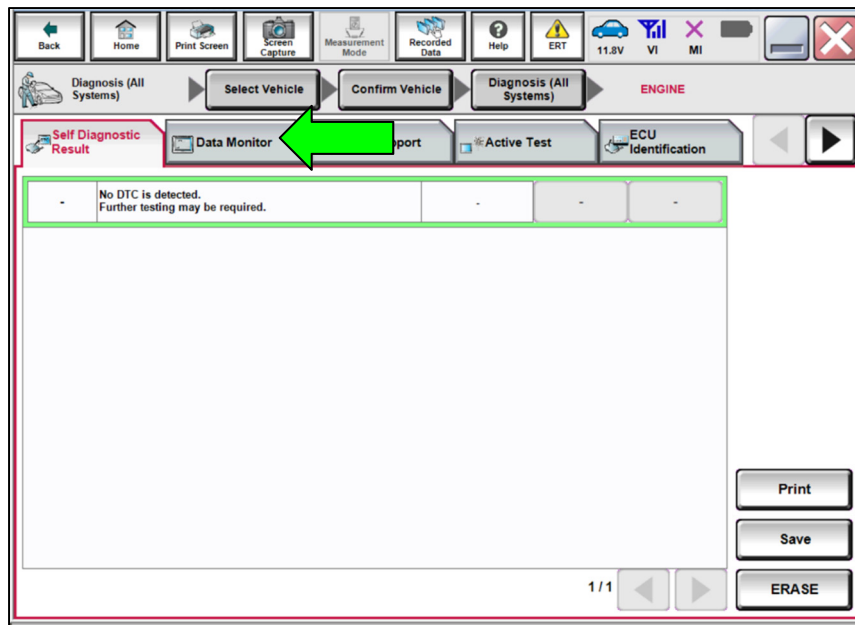


Figure 3

9. Select Clear Monitor Item.

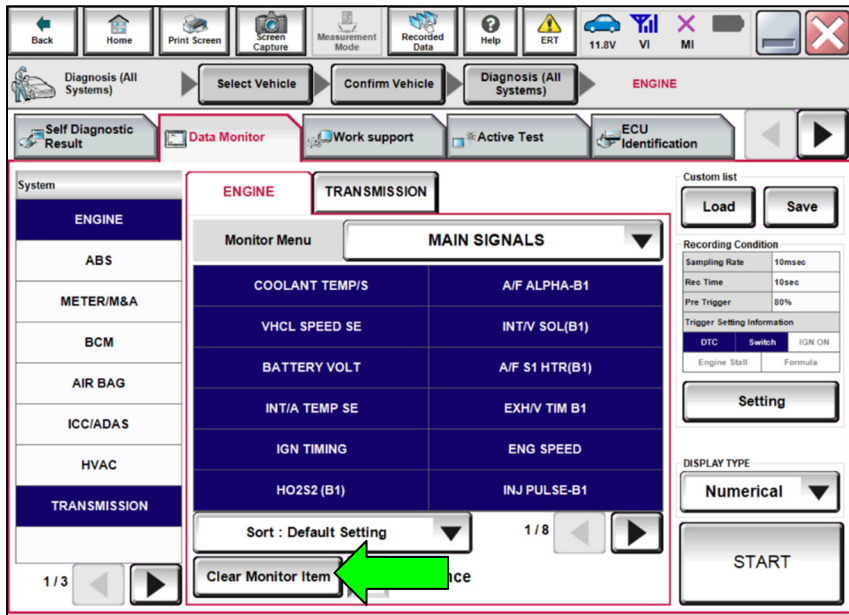


Figure 4

10. Locate and select HO2S2 (B1) from the data monitor list, and then select START.

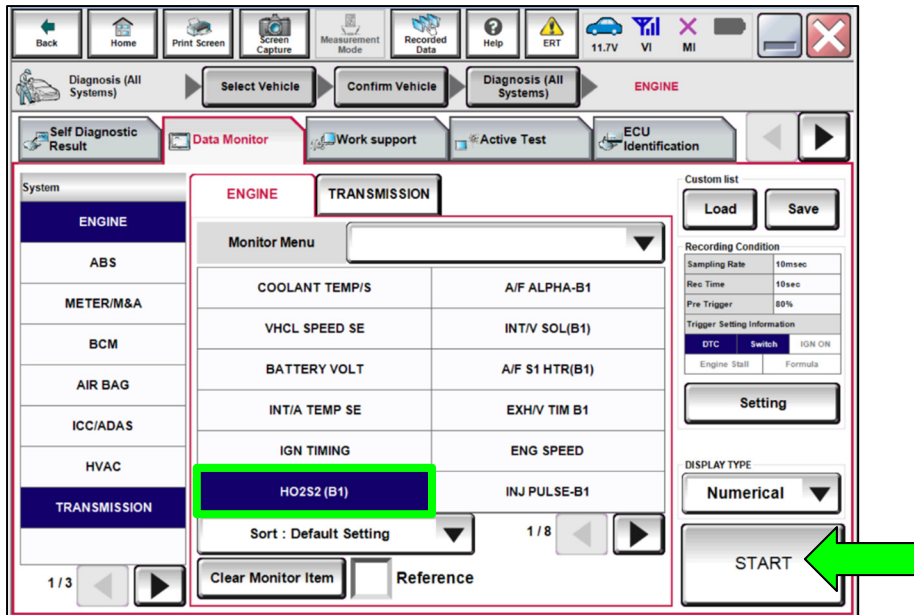


Figure 5

11. Check the Rear O2 Sensor (**HO2S2 (B1)**) voltage in the data monitor screen (Figure 6).

- If the **HO2S2 (B1)** voltage is 0.13 V or above, no further action is needed. The inspection result is **OK**. Skip to step 19 on page 10.
- If the **HO2S2 (B1)** voltage is less than 0.13 V, the rear O2 sensor has a short to ground condition and the inspection result is **NG**.

a. Print the data monitor screen and attach it to the repair order.

b. Diagnose and repair the Rear O2 Sensor short to ground condition by following the diagnosis steps outlined in the ESM for DTC P0137 (HO2S2).

- For Altima, refer to the ESM: **ENGINE > ENGINE CONTROL SYSTEM > QR25DE > DTC/CIRCUIT DIAGNOSIS > P0137 HO2S2 > Diagnosis Procedure**
- For Sentra; refer to the ESM: **ENGINE > ENGINE CONTROL SYSTEM > MRA8DE > DTC/CIRCUIT DIAGNOSIS > P0137 HO2S2 > Diagnosis Procedure**

**NOTE:** Follow the diagnosis and repair procedure even if DTC P0137 is not present.

c. Proceed to step 12 to perform the drive pattern to set the System Readiness Test (SRT) status.

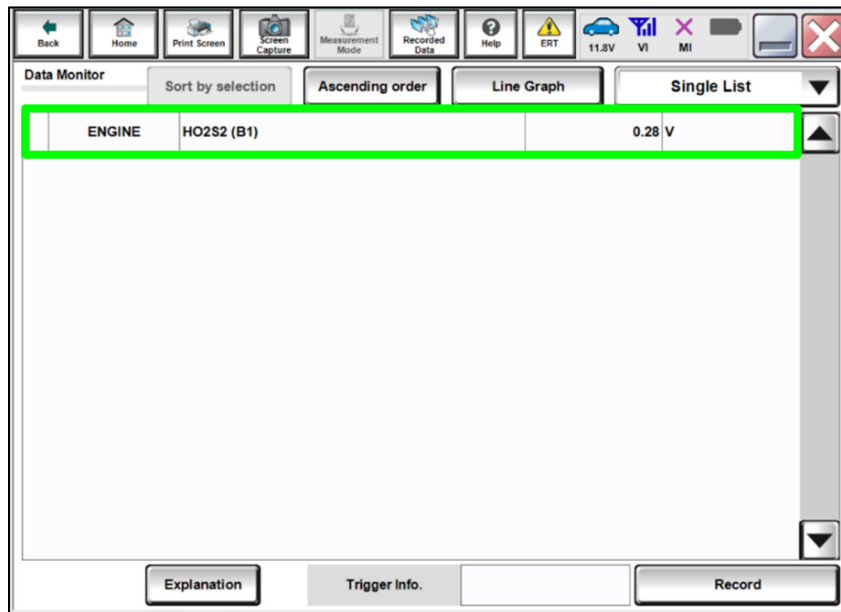


Figure 6

## Setting the System Readiness Test (SRT) Status

- Set the SRT's by performing the SRT status drive pattern outlined in the ESM.
  - For Altima, refer to the ESM: **ENGINE > ENGINE CONTROL SYSTEM > QR25DE > BASIC INSPECTION > HOW TO SET SRT CODE > Work Procedure**
  - For Sentra, refer to the ESM: **ENGINE > ENGINE CONTROL SYSTEM > MRA8DE > BASIC INSPECTION > HOW TO SET SRT CODE > Work Procedure**

## Check SRT Status

- Select **Diagnosis (All Systems)**.

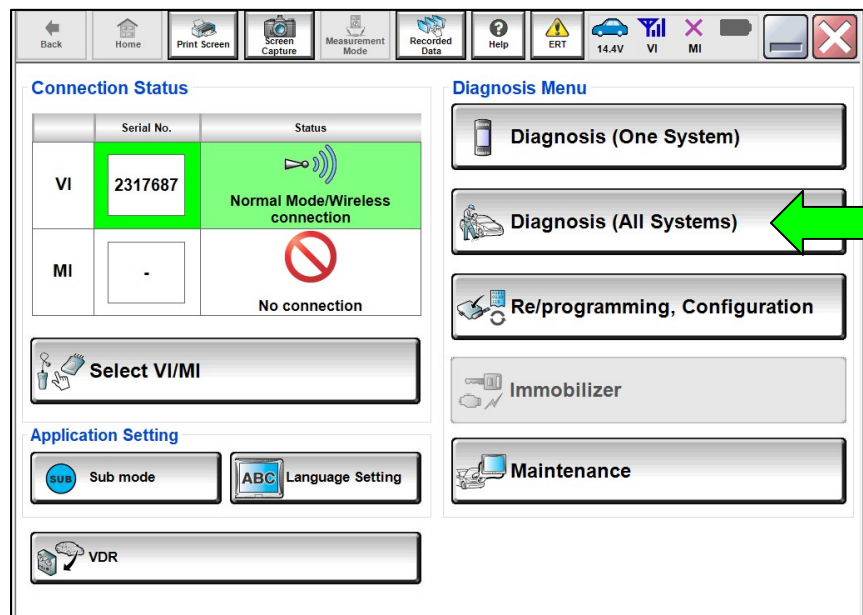


Figure 7

14. Select **SRT & P-DTC**.

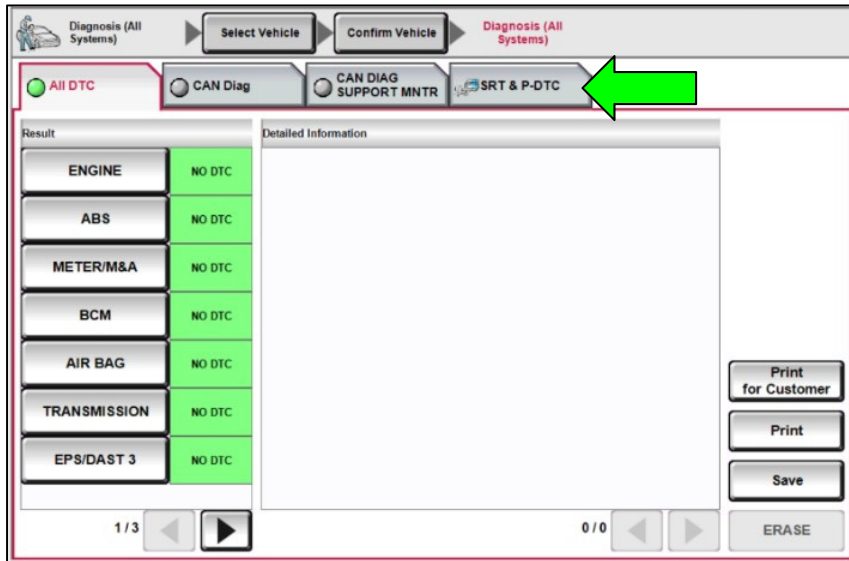


Figure 8

15. Select **ENGINE** and **ENG SPEED**, and then select **START**.

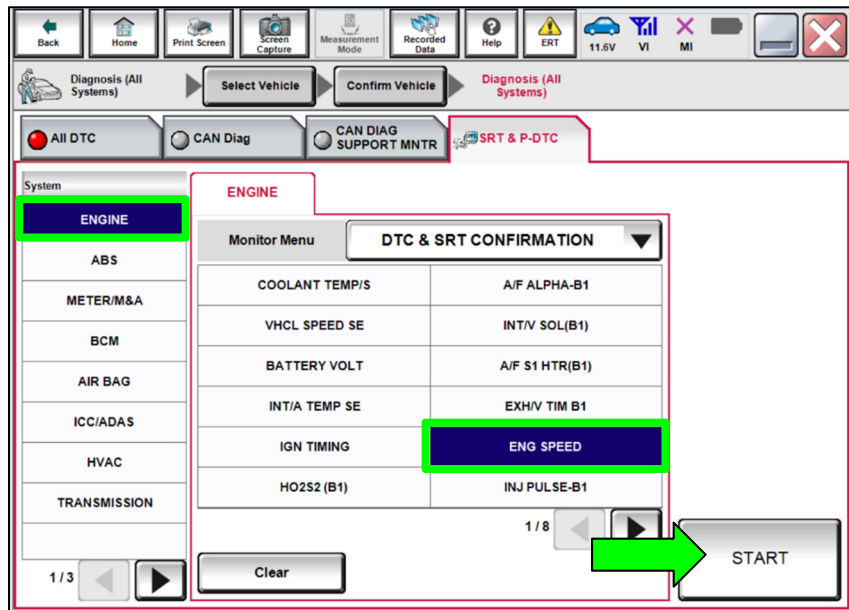


Figure 9



16. Check the SRT Status for **HO2S** and **CATALYST**.

- If the **HO2S** and **CATALYST** status is “CMPLT”, proceed to step 17 on page 9 to check for Engine DTC’s.
- If the **HO2S** or **CATALYST** status is “INCMP”, go back to step 12 on page 7 to perform the SRT status drive pattern again.

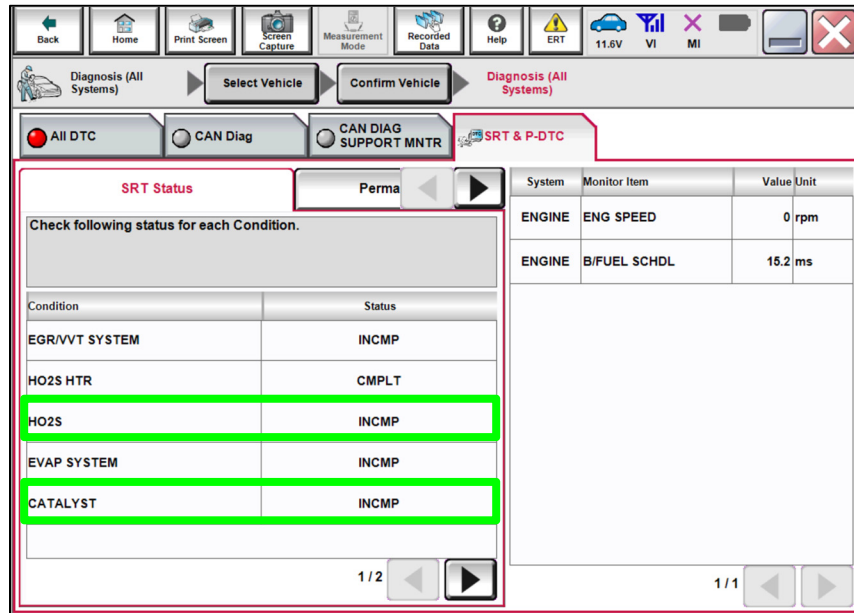


Figure 10

### Check for Engine DTC’s

17. When the **HO2S** and **CATALYST** status is “CMPLT”, select **All DTC**.

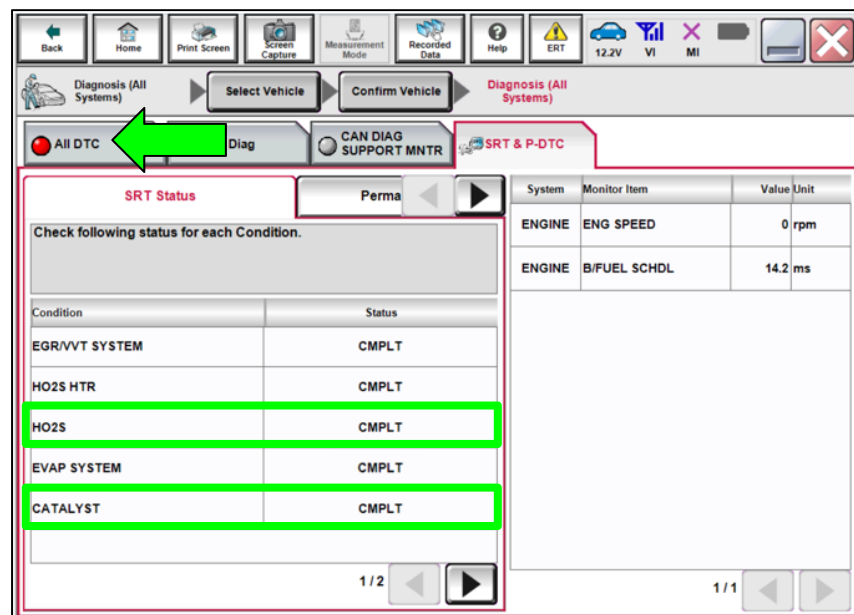


Figure 11

18. Check for Engine DTCs.

**IMPORTANT:** Diagnosis and repair of DTCs not listed in **Table A** are not covered under this bulletin.

- If there are stored DTCs (Current, Pending, or Past) that are listed in **Table A**:
  - a. Print all the DTCs and attach the printout to the repair order.
  - b. Perform diagnosis and repair of the stored DTCs per the ESM.
  - c. Erase the DTCs and then re-perform steps 12 - 18 on pages 7 - 10 after repairs are completed.
- If there are no stored DTCs (Current, Pending, or Past), proceed to step 19 on page 10.

**Table A**

<b>Applicable DTC List</b>			
P014C	P014D	P015A	P015B
P0130	P0137	P0138	P0139
P0037	P0038	P2096	P2097
P0420			

19. Remove the battery maintainer/smart charger.

20. Close the C-III plus application.

21. Remove the VI from the vehicle.

## CLAIMS INFORMATION

Submit a Primary Operation (PO) type line claim using the following claims coding:

DESCRIPTION	OP CODE	SYM	DIA	FRT
Rear O2 Sensor Voltage Check	DX61AA	ZE	32	0.3

**NOTE:** This operation code (**OP CODE**) is for a check only; not to be claimed with any other operation code.

OR

Submit a Primary Part (PP) type line claim using the following claims coding:

DESCRIPTION	PFP	OP CODE	SYM	DIA	FRT
Rear O2 Sensor Voltage Check	(1)	DX61AA	ZE	32	0.3
SRT Drive Pattern No. 1 to No. 5		DZ20AA			1.3

(1) Reference the electronic parts catalog and use the Oxygen Sensor (226A0-\*\*\*\*\*) as the Primary Failed Part (PFP).

**NOTE:** These operation codes (**OP CODE**) are to be claimed with the Primary Failed Part Repair.

## AMENDMENT HISTORY

PUBLISHED DATE	REFERENCE	DESCRIPTION
February 9, 2022	NTB22-007	Original bulletin published
March 2, 2022	NTB22-007A	<b>CLAIMS INFORMATION</b> updated